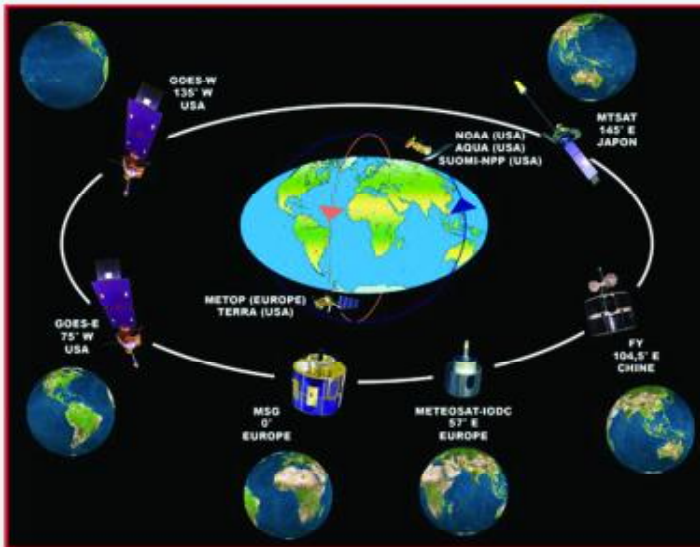


ESTD : OCTOBER, 1994  
THLA TIN CHHUAK CHANCHINBU

August 2016

# Kristian Naupang



## VANSANG TLAWH PAWH TANGKAINA

- Zu hi!
- Kal la êng rawh

Kum 22-na

August 2016

Bu 263-na

*Editor*

Upa C. Lalbiaktluanga

*Managing Editor*

Rev. Dr. C. Chawngghmingliana

*Joint Editors*

Lalremmawia

Upa B. Lalhmunliana

John Lalhruiatluanga

Upa Dr. C. Vanlalhruaia

*Circulation Manager*

Lalfakzuala

# K R I S T I A N N A U P A N G

Synod Office First Floor

Mission Veng, Aizawl – 796 001

Phone : 0389-2324590

e-mail:

[kristiannaupang@gmail.com](mailto:kristiannaupang@gmail.com)

A man pe duh leh a bu la duh  
chuan Circulation Manager  
hriattir tur a ni.

**Kum khat lak man Rs. 50.**

*Kristian Naupanga thu chhuahte hi Editor ngaih dan a ni vek kher lo.*

A chhunga thu awmte	Phek
1. Editorial	1
2. Kal la, eng rawh	2
3. Ka sual man bat min tlaksak	7
4. Van sang tlawhpawh țangkaina	9
5. <i>Biangbiakna</i> – Teresa Vanmalsawmi	11
6. Zu hi	16
7. Sakeibaknei leh Chaichim	17
8. Fahrahte Pathian	19
9. <i>Bible Thawnthu</i> – Unau pahnih	21
10. <i>Thawnthu Fing</i> – Sangha mantu leh a thurualpui	23
11. Hriatzauna huang	26
12. Hmutheitua	28
13. Zawnehhuah	30
14. Hre thei rawh	31
15. Crossword	32
16. Chei rawh le	33
Ka hmuh ang hmu thei rawh	(Inside Cover)

EDITOR  
KAM CHHUAK



## EILEH IN KAWNGA INSUM

*Mizote hi ei leh in kawnga insum lo tak mai kan ni a. Kan kâa a tui phawt chuan ei mial mial zel mai kan ni a. Kuhva ei mi chuan a ei reng a ni deuh mai. Chutianga ka awl mang lova a ei chuan ni khatah pawh a ei hnem thei ðhin reng a ni.*

*Tleirawl leh naupangte pawhin mei zuk ruk nachang an hre ringawt mai a. Tui an tih vang ni miah lovin mei zuk ruk an ching ðan a. A rei deuh hnu chuan sim a lo har hle tawh ðhin a ni.*

*Mawm lutuk te, hang lutuk te, thlum lutuk te kan ei hnem avanga thau lutuk leh taksa chak lohnain min chim veleh fimkhur nachang kan hria a, ei leh inah kan insum a, exercise te kan la a, a ðha viau mai. Mizoramah hian puitling bakah naupang thau lutuk kan tam ta hle mai.*

*Chhiatna kan thlen veleha fimkhur leh insum ai chuan, kan chhiat hma ngei hian insumin fimkhur ila a va ðha dawn em! Ei leh ina kan insum zawh loh vang leh kan ei mil tawka thlan chhuaka hna thawh emaw, exercise lak emaw kan peih loh vangin kan hrisel tur angin kan hrisel lo ðhin a ni. Kum sawmnga pawh tling lova thi, hrisel lo kan va tam sawt em! Kan hnam pum mihring dam rei zawng chawhruala han chhut hian kan dam rei lo khawp mai. Ei tuia hahdam bawk si hi mihringte tan hian a ðha lo. I ei leh i thawh a inmil em tih chhut ðhin rawh.*

## KAL LA, ÊNG RAWH

– C. Lalhmingmawia (Mus-a)  
Kolasib Diakkawn

Khawvelah hian mi chi hrang hrang kan awm a, mi thuhmun lo hlir kan ni. Thenkhat mahni chan tawka lungawi ngai rêng rêng lo an awm laiin thenkhat mahni awmna hmun leh dinhmun apianga lungawi thiam zel an awm baw. Chutiang zinga mi ropui tak pakhat chu Frances Jane Crosby-i hi a ni awm e.

### Mittel chung a khawvel tiêngtu

Frances Jane Crosby, Fanny J. Crosby tia hriat lar hi John leh Mercy Crosby-te inkarah March 24, 1820 khan Southeast, Putnam Country, New York (United States)-ah a lo piang a. Thla ruk mi lek a nih laiin a damlo an enkawl fuh loh avangin a mit a del nghal. Kum riat mi lek a nih laiin an chhungkuain Ridgefield, Connecticut lamah an pem a, hetah hian kum li chung an awm.

Kum 15 mi a nihin New York Institution for the Blind-ah a lut a, chutah chuan zirna tha tak a dawng. Kum 1847 khan a zirna sikulah hian a thawk ve nghal a, March 1, 1858 thleng a thawk.

March 5, 1858 khan a zirna hmuna zir ve tho Alex Van Alstyne-a nen an innei a. Kum 1864 atangin Wm. B. Bradbury tan Sunday School hla a phuah tan a, hei hi hriat a hlawhna ber pakhat a ni. Hla chham mi sang chuang fe a phuah baw a, chungte chu bu hrang hrang paliin a tichhuak nghe nghe. Hla hi a duh hun hunah a phuah zung zung thei a, cho chhuaktu bik a mamawh kher lo va, a hla tha ber berte pawh hi chawpchilh taka a phuah a ni hlawm. Sikul a kal laiin guitar perh leh piano tum a zir a, music a zir thiam hle baw. Aw tha tak a neih vang leh music a thiam avangin awlsam takin hla a phuah zung zung theih phah baw.

Fanny-i hian a hna hi nuam a ti hle a, a hlimna ber pawh a ni. A dinhmun azirin hlim takin a titi luam thei a, khawngaih thla la takte bulah mi khawngaih thei tak a ni thei bawk. A nunah a lungawi em em a, mitdel khaw hmu lo mah ni se, Pathian lakah a vui ngai lo va, a awm dan leh dinhmun chu lungawi takin a pawm hmiah mai. Heti taka a nuna a lungawi chhan hi kum riat mi lek a nih laia a hla phuah hmasak berah hian a lang chiang hle. He hla hi amah ngeiin, "Ka nun kaihruaitu a ni reng," a ti hial. Chu a hla phuah chu:

*"Khua hmu thei lo mah ni ila,  
Mi hlim ka va ni em!  
Khawvelah lungawi zel turin,  
Tiamthu ka tiam tawh si.  
Mi dang dawn ve loh  
mawsawmna,  
Ka va chen nasa bik em!  
Ka chhingmit khua hmuh loh  
vangin  
Ka ṭapin ka vui dawn lo."*

Bible thu tam tak a vawng a, Thuthlung Hlui bu hmasa palite hi bel takin a vawng chhuak vek a, Chanchin Ṭha bu palite nen hian. Chu pawh kum 10 a tlin hma lehngalin!

Thla ruk mi lek a nih lai aṭanga khaw hmu lo, mitdel mah ni se, Fanny J. Crosby-i chuan beiseina a tlachham ngai lo va, eng tik lai mahin a tlawm ngai lo va, beidawng leh lungngaiin a inkaikun ngai hek lo. Chuti ahnekin a hla ropui tak tak hmangin khawvel a hrut chhuak a, a hla ṭha tak tak hmangin mi tam tak Isua ke bulah a hruai thleng zawk a ni.

A mitin khua hmu lo mah se, a chhungri a eng a, chu eng chu mi mit hmuhah a chhi reng ṭhin. A êng neih chhun chu a chhi mai a, a bak zawng chu Pathian kutah a dah mai a ni.

### **Mi lungawi êm êm chu!**

Hla pakhat a awm. A dinhmun leh a nihnaa pa pakhat lungawi êm êm chanchin a ni a, a hla chu 'Miller of the Dee' tih a ni a, Charles Mackay-a phuah a ni a. Dee luipui kama chhangphut hertu chanchin a ni. Chu pa chu a dinhmun leh a nihnaah a lungawi êm êm a, a hnathawh pahin hlim leh lungawi takin ring tak takin a zai ṭhin a— "Tu mah ka awt lo va, tu mahin min awt hek lo," tih chu a hla sak ṭhin a ni.

Ni khat chu ring taka a hla sak thin pangngai a sak lai chu ram pakhata lal, 'King Hal' chuan a lo hre fuh hlah mai a, chuti taka mahni hna leh nihnaa lungawi chu mak a ti. 'Tu mahin min awt lo,' tih a sak lai chuan King Hal-a chuan lo chhangin, "E, i dik lo tawp mai. I dik lo hulhual a ni. Nangmah ang hian ka rilru/thinlung hi zangkhai thei ngat se chuan kan nihna inthleng hi ka huam ngat mai."

"A nih leh tunah hian hetu taka hlim leh lawma ring tak taka i zai theihna chhan thuruk hi min hrilh thei ang em?" tiin King Hal-a chuan a zawt ta chawt a. Chhangphut hertu chuan a lukhuma chhangphut kai ben fai pah chuan, "Ka ei tur ka thawk chhuak a, ka nupui ka hmangaih a, ka thiante ka hmangaih bawk. Ka fate pathum ka hmangaih a, ka rulh theih loh sum eng mah ka ba lo va, ka chhangphut herna khawl tuai virtue Dee lui vang hian ka lawm a, ka chhungte ka chawm theih phah miao va," tiin a chhang.

Chutah King Hal-a chuan, 'Mangtha,' tih pahin, "Tun chinah ka thian, tu mahin min awt lo tih

hi chu sawi ri tawh lo hram ang che. Chhangphut kai liai luai i lukhum kha ka lallukhum tluk a ni a, i khawl hi ka chhiah lak luh zat zeta hlu a ni. Nang ang hi England tana mi chhuanawm in ni ngai e," tiin a kal liamsan ta.

### **Lawmna tur hliir a lo ni**

Guatemala khawpuia 'Audiology Clinic' (Ṭawng/ri hriatna lam enkawlna) pakhatat chuan 'ṭawng dan zirtirtu' (Speech therapist) nula la naupang tak Jessica-i chu uniform hain nalh takin a ṭhu a. A hma chiahah chuan naupang kum 8 mi lek Adeline-i a ṭhu ran mai bawk a. Adeline-i hi home-a khawsa niin a awmna hmunah chuan naupang dang 100 dawn lai an awm ve bawk a, chumi hmunah chuan Adeline-i chuan tui leh chaw mamawh changin zaizirin a sawi mai thin. A tun hma nun lama hriselna chungchang chhinchhiahna (medical history) eng mah a neih loh avangin Adeline-i ri hriatna ṭha lo chu eng tik aṭanga inṭan nge tih hriat theih a ni lo. Chu vang chuan bengdâr hian amahah hna a thawk ang em, chu chu vuahsak ta se, ri a hriat theih phah ang

em tih pawh eng mah a hriat loh, tih chhin pawt loh chuan.

Adeline-i chu thutthlengah thuin a hmaah Jessica-i chu an mit a inzawn theihna turin a thingthi ran a. A bulah chuan zaizira tawng let thiam Nancy-i chu hmel nelawm tak, nui sang chungin a thingthi ve bawk a. Adeline-i bengah chuan bengdâr chu an vuah ta a, an han on ta. Nancy-i chuan Spanish tawngin, "Tu nge i hming? Kum eng zat nge i nih?" tihte a zawt a; mahse, Adeline-i chuan a chhang lo. A nui sak a, a mitko a san ek ek ringawt. Bengdâr chu an herh sang lehzual a, chutah Jessica-i chuan ramsa lem chuanna bu a lek chhuak a, zawnglian (Gorilla) chu kawkin, "Oooh Oooh Oooh!" tiin zawnglian tih dan chu a zir a. Adeline-i chuan nui sen sen chungin, "Oooh Oooh Oooh!" a rawn ti ve ta hlawl mai. Chu pindan zim tea thute chu lawm avangin an nui chhuak a, an biangah lawmna mittui a luang a, bengdâr chuan hna a thawk tih an hre ta.

Adeline-i tan tun tum hi a pian ahnu lama ri a hriatna

hmasa ber a ni mai thei, ama awka chhuak ngei pawh telin. Chutia ri an hre ve ta chu a hlim leh lawm lutuk chu a nui chhuak hawk hawk mai. Chu thil hmutute erawh chu an lawm avangin tu mah reengin eng mah sawi tur an hre lo, a reh thiap. Adeline-i chuan ri a hre thei ngei a; mahse, zir tur a la ngah a, a lawnna tur rahbi a la tam mang e. Hei hi Adeline-i tan rahbi hmasa ber a ni a; mahse, a tan rahbi hmabak tam tak la awmte chu a lawn kai theih tih a hria. Chu lai hmunah chuan chawlhkar tin Adeline-i chu kal ziah tura tih a ni a, chutah chuan tawng a zir dawn a ni.

Kum tam tak chhung chu Adeline-i hian eng ri mah a hre ve ngai lo. Mahse, tunah chuan amah buaipuitute avangin ri a hre ve thei tawh dawn a, a hmabak chu tawng a ni leh mai. Thawm riva eng mah hre ngai lo, ri leh aw ngaitthla thei ngai lo khan, khawvela thawm rimawi tak tak te, rimawi chi hrang hrang te leh mihring tawng ri te ngei pawh a hre ve thei dawn ta. Mi dang puihna azarah Adeline-i chuan khawvel rimawi chi tinreng a hre

ve thei dawn ta a, mi dangte nuna 'êng' chu a tan 'lawmna tur hliir a lo ni'.

Mitdel khaw hmu lo ni chungaw lungawi tlat, ni tin kawla ni chhuak chhiara kut hnathawk chungaw chhungte chawma lungawi em em te leh ri hriatna nei lo, mi dang puihna avanga beng lo inhawng ta te, an lungawina chu khawvel sum tinreng leh ro hlu zawngte aiin a hlu zawk lo vang em ni? Mahni nihna pawm thiam tura Lalpa puihna neih tluka hlu hi eng thil dang nge awm tehlu ang le? Heng mite hian Lalpa tana an tih lam aiin anmahni kaltlanga Lalpan hna a thawh hi a ropui zawk a, chu chu mi dangte nun tiêngtu leh tihausatu a ni zawk.

Lalpa tana kan tih leh thawh ai mahin Lalpa'n keimahni kaltlanga hna a thawh hian mi dangte tan malsawmna a ni a, a hlawk zawk fo. Kan nihna ang ang min pawm ang hian kan nihna ang ang hi pawm thiam ve ila, chu chuan lungawina min thlen ang a, mi dangte pawh a nghawng zawk ngei ang le. Mahni theuhvah êng kan nei vek a, chu chu khawi hmunah nge kan chhit ên thin tih lai hi a pawimawh ber chu a ni. Bang kil thim laia êng te tak te emaw, tlang chhipa khawnvar emaw pawh ni ila, mi dangte ên tura thawk tur kan ni.

**Kal la, êng rawh.**

---

**Pathian nena inpawlina awmzia chu khawvel  
nena indona a ni.**

– *Charles E. Fuller*

**Aw Lalpa, i tan min siam a, nangmaha ka  
chawlh hma chu ka rilru a chawl thei lo.**

– *St. Augustine*



## KAN SUAL MAN BAT MIN TLAKSAK

– *Upa Zarzokima Khiangte  
Madanrting, Shillong–21*

Russia ram hi Communist ram a nih hma chuan Kristian duhawm tak tak an awm a. An lal (Tsar/Czar) pakhat Alexander-a an tih chu inbawl danglamin a mite chu a tlawh thin a. Tum khat chu sipaite awmna barrack a tlawh a. Officer pakhat, la naupang tak hi dawhkan bawhin a lo muhil a, dawhkanah chuan pistol in-load sa leh lehkha phek hi a awm bawk a.

Alexander-a chu dim takin chu tlangval chu a va pan a. Lehkha pheka inziak chu a han chhiar a, hming zawna pawisa eng emaw zat inziak a hmu a, a leibat zat a ziak a lo ni a. Pawisa khelh a ching tih a hre thiam ta mai a. A belh khawm a han hmuh chuan a hlawhin a rulh sen loh tur a ni tih a Chiang a. A belh khawm hnuaiyah chuan he thu hi a ziak a: “Tu’n nge heng zawng zawng hi min rulhsak thei ang?” tih hi.

Pistol a lo awm avang chuan inkah hlum a tum niin a hria a. A tirah chuan a hnena kal tura kohtir a rilruk

a; nimahsela, a thianpa fapa a nih avangin a rilru a thlak leh ta zawk a. A thu ziak, “Tu’n nge heng zawng zawng hi min rulhsak thei ang?” tih hnuaiyah chuan lian tak maiin, “Alexander-a,” tiin a ziak a.

Chu tlangval chu a rawn harh chuan a thu ziak chu a han chhiar nawn leh a, a hnuaiyah an lalpa hming ziak a han hmu chu a phu zawk mai a! A hlauvin a lawm hle bawk a. Tichuan, lalpa chuan a leibat rulhna tur pawisa chu a thawn ta a ni.

Juda-te chuan leiba an neihin blackboard-ah hming

leh an bat zat an zia k a, leiba an rulhin an thaichhe mai thin. Pawnchhe huhin, eng mah lang lo turin hru reh ta sela, chutiang chu a ni.

Lal Isuan a thisena a tlen fai chu soal nei lo ang an ni tawh. Keini pawh kan soal man bat kan tlak theih loh, kan pian hma daih tawhah khan Lal Isuan krawsah min lo tlaksak tawh a ni. ‘Batna lehkha thupêka zia k, kan chung a awm, min dodâl thin a chu a thai bo tawh si a. Chu ngei chu krawsa khêng betin a la kiang ta a’ (Kol. 2:14).

Lal Isuan, “Ngai teh, kawngkhâr bula dingin ka kik hi; tu pawhin ka aw hriaa kawng a hawn chuan, a hnênah ka lût ang a, a hnênah zanriah ka ei ang a, ani pawhin ka hnênah a ei bawk ang,” (Thupuan 3:20) a ti. Lal Isuan kan thinlung kawngkhar bula dingin a kik a, tu pawhin (naupangte pawh tel vekin) ka aw hriaa, kawngkhar hawn-saka, mikhual emaw, inleng ang emawa kan lo lawm chuan luh nghal a intiam a, a luh chuan min pawl zui (fellowship) a tum. Lal Isua hi thinlungah i lawm lut vek ang u.



- # *Mombati hi i chhit chuan a eng a; mahse, a ral thin. Mi dangte tan i insenso chuan nangma lamah ral a awm thin a; mahse, mi dangte tan leh i Pathian tan i eng dawn a ni.*
- # *Lal Isua rawng i bawl lo a nih chuan Setana rawngbawl i ni tho tho dawn. Chuvangin, Isua rawng bawl mai rawh.*
- # *Dam rei tak, Pathian tana hun hmang tha si lo, Pathian tana tangkai miah si lo a awm theih. Vanglai hun taka boral, mahse, theihngihl theih ngai tawh loh tur thil tha khawvel tana hnutchhiah an awm. Nang eng nge i tih ve dawn le?*

## VANSANG TLAWHPAWH TANGKAINA

– *Lalbiaktluanga*  
*Durtlang Leitan*

Vansanga boruak lawng vawi khat kap chhuak tur hian cheng vaibelchhe tel fe sen a ngai a. A ropuiin a hmuhnamw ve hranpa e, tih vanga kah chhuah chi a ni lo. A hautak loh deuh nan hman nawn theih chi space shuttle te an siam a, heti chung pawh hian space shuttle hian vawi khat zin chhuah nan US dollar maktaduai zanga vel zet a seng a ni. Chu vang chuan awmze nei taka kah chhuah a ni a, a tangkai dan hi hlawn hnih – Application leh Scientific-a then a ni.

Application-ho chu inbiakpawh nana hman chi nge, leia thil awm dan hrang hrang enthlithlaina – khawchin hriatna, remote sensing leh thil dang atanga hmante leh tuihnailawng leh lawng pangngai kalkawng kawh-hmuh nana hman ang chite hi a ni a. Entir nan, 1971-a USA kah chhuah Intelsat 4 satellite kha telephone line 9,000 leh colour TV channel 12 sem darh nana hman a ni. A satellite azirin hei aia tam fe pawh hian a hman theih a, a khat tawka

relay centre receiver leh transmitter inkawp, senso tam taka bun thluah ngai lovin direct-in hla tak takah satellite pakhat hmangin a thawn darh vek theih a ni.

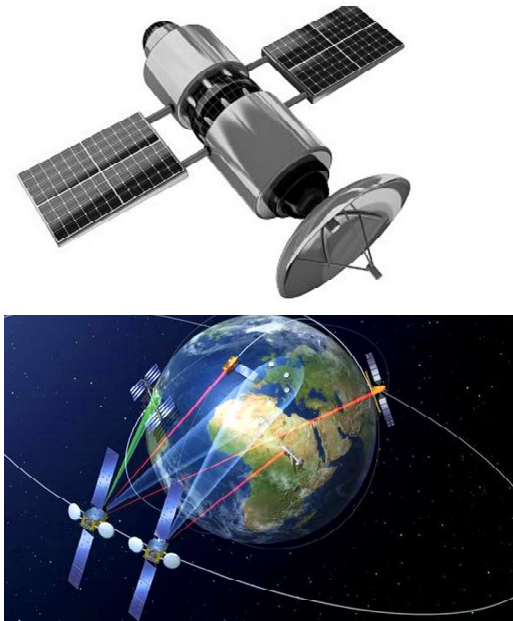
Disc antenna leh cable TV i en thina channel zawng zawng kha satellite atanga i dawn vek a nih kha i hria em? Telephone-a hmun hla taka mi leh i bula mi i biak pawhin satellite a kal tlang zel a ngai bawk.

*Satellite hmang hian telex, fax, internet leh thil dangte pawh cable leh wire*

*hmang lovin khawvel hmun hrang hrangah a inthawn chhawn vek theih a ni.* India rama an tih thar ve, DTH an tih mai *Direct to Home* te hi satellite atanga direct-a mahni in theuhva TV channel hrang hrang lo man theihna a ni a, internet leh fax atan a hman theih nghal bawk. Cable ngai lovin channel 1,000 chuang, quality tha zawk bawk siin a man theih a ni.

International Telecommunication Satellite Orgni-

zation, INTELSAT an tih mai, ram hrang 143 member neiin INTELSAT satellite 19 hmangin khawvel mihring zawng zawng deuhthaw hi eng tik lai pawha TV, computer, telephone, video, internet, fax leh thil dang hmanga inbe pawp thei rengin min siam a ni. Tun hnaia USA-in Missile Defence System siam a tum mek, khawvel ram dangten an sawisel luai luai pawh hi satellite hmang thova tih tur a ni.



*Biangbiakna*

## TERESA VANMALSAWMI KAWMNA

Teresa Vanmalsawmi hi kumina CBSE hnuai a Pawl 12 result chhuakah khan India ram pum puia a tiṭha tlem te zingah a tel a. *Kristian Naupang* chanchinbuin zawhna tlem zawtin kan han kawm a. *Kristian Naupang* chhiartute tan a ṭangkai ngei kan beisei.



*KN – Kristian Naupang*

*TV – Teresa Vanmalsawmi*

*KN : I pian ni leh thla min hrilh thei em?*

*TV : April ni 17, 1998-ah ka piang.*

*KN : Tute nge i nu leh i pate?*

*TV : Ka nu hming chu Lalzarmawii a ni a, ka pa hming chu Zonunmawia a ni.*

*KN : Unau pianpui eng zat nge i neih?*

*TV : U mipa pakhat ka nei a, nau hmeichhia pakhat ka nei bawk a. Ka nau chu 2001 khan a nausen laiin a thi.*

*KN : I unaute chuan eng nge an zir mek?*

*TV : Ka u chuan Pachhunga University College-ah B.A. Semester III a zir dawn chiah.*

*KN : I nu leh i paten eng nge an thawh?*

*TV : Ka nu chu Govt. Aizawl North College-ah Associate Professor a ni a. Ka pa chu Synod Office-ah Co-ordinator niin Central KṬP-ah General Secretary a ni mek.*

*KN : Khawi sikulah nge i kal thin? Exam-ah i tiṭha thin em? Eng division-ah nge i pass thin?*

*TV : KG I leh II chu English Congregation School-ah ka lut a, Pawl 1 atanga Pawl 8 thleng Gospel Centenary School-ah ka lut leh a, Pawl 9 leh 10 chu St. Paul's Higher Secondary School aṭangin ka bei a, Pawl 11 leh 12 chu Delhi Public School, R.K. Puram-ah ka chhunzawm.*

Pathian zarah exam-ah chuan a tiṭha pawl ka ni ve ṭhin a, 1-na aṭanga 4-na vel hi a tlangpuiin ka ni ve ṭhin. Delhi-a ka sikul luhnaah chuan ranking system an hmang chiah lo va; amaherawhchu, ka percentage chu a sang pawl a ni ve ṭhin. Pawl 11 leh 12-ah chuan Distinction-ah ve ve ka pass.

*KN : Matric-ah khan top ten-ah i langin kan lo hria a. Khawi sikul aṭangin nge? Eng zatna nge i nih?*

TV : Aw, Matric-ah khan Pathian zarah 4-na ka ni ve a. St. Paul's Higher Secondary School, Aizawl aṭangin ka bei a ni.

*KN : Pawl 12-ah hian science i la lo tlat mai a? Eng vang nge?*

TV : Pawl 11 tir lamah khan thla thum chhung vel chu science ka la ve hman a. Amaherawhchu, chemistry hi ka tui thlawt loh avang leh medical emaw, engineering line emawa kal ka tum lem loh avangin Humanities (Arts)-ah ka inlet ta daih a. Ka lo tui phian mai a, ka inchhir lem lo khawp mai.

*KN : Lehkha i zir ṭhin dan tlangpui min han hrilh teh.*

TV : Class 11 & 12-ah chuan zing dar 6:50-a kan ṭan ṭhin avangin zing lamah chuan ka zir ngai lo va. Tlai dar 3 aṭanga dar 7 chhungin homework ka ti a, ka zawh hma leh phone ka hman loh pawhin lehkhahu ka chhiar ṭhin a. Dar 8:30 aṭanga dar 10:30 thleng lehkha ka zir leh a. Amaherawhchu, topic emaw, subject khat emaw ka zawh velel minute 10 vel ka chawl ngei ngei ṭhin. Chu chu a pawimawh hlein ka hria.

*KN : Smartphone i nei tawh em? Pawl eng zat i nihin nge smartphone i neih?*

TV : Nei tawh e. Pawl 10 ka nih aṭangin ka nei.

*KN : Smartphone hi i zirna atan i hmang ṭangkai em?*

TV : Aw, hmang ṭangkai khawp mai. Ka zir laiah thil hriat thiam loh emaw, hriat belh duh emaw ka neih apiangin internet-ah ka zawng a, zirtirtute ka zawt ṭhin bawk a. Tin, tun laiah chuan thil pawimawh leh notes vel inthawn kualna atan a ṭangkai ka ti hle bawk. Mahse, rilru a la

peng hneh em a, mahni inthunun a ngai ka ti a, kan exam hma thla thum vel chhung chu ka khawih ngai lo.

*KN : Lehkha i thiam thei hle mai a. I nu leh paten lehkha zir turin an tir thin che nge zir nasa lutuk an ti zawk che?*

TV : An ti lo ve ve. Ka tet lai aţangin lehkha zir hi chu ka mawphurhnaah an dah a. Ka zir loh chuan keima tan a tha dawn lo tih ka hriat avangin ka zir thin. Chu chuan mahni inrin tawkna min pe a. Tin, zir chiam mi ka ni lo va. Kum tir aţangin ni tina kan zir ka en nawn thin a, chu chuan min pui a, rilru hahna ka pumpelh bawk.

*KN : LPS Vision-in Spelling Bee an buatsaih khan i hming a langin kan lo hria a. Eng zatna nge i niha, eng tik kuma buatsaih nge ni kha?*

TV : Pathian zarah 1-na ka ni ve a. Kha kha kum 2011-a an buatsaih a ni.

*KN : Tunah hian Delhi Public School, R.K. Puram aţangin Pawl 12 tha takin i rawn zo a ni a. I dinhmun dik tak min hrilh thei em?*

*tih that dan hi engtin chiah nge? Mark hmuh chawhrual eng zat nge?*

TV : Ni e, Pathian zarah result tha tak ka nei a. All India rank hi chu top 3 chauh an tihchhuah avangin keima dinhmun ka hre lo va; amaherawhchu, stream zawng zawng aţanga 1-na kha mark 11-in ka pha lo tih kan hria a. Kan sikul bikah chuan stream zawng zawng lak khawmin 5-na ka ni a. Humanities (Arts) bikah 2-na ka ni a, 97.2% ka hmu a; Psychology leh Sociology-ah 100 ve ve ka hmu bawk.

*KN : Khawiah nge college kal i tum? I kal tumna college-ah chuan seat i hmu tawh em? College tha tak a ni ang chu maw?*

TV : Lady Shri Ram College-ah sociology lak ka tum a. Amaherawhchu, April ni 30 hian cut-off list a chhuak dawn chauh va, chutah chuan ka tlin leh tlin loh kan hre chauh vang.

Aw, India rama college tha zinga chhiar chu a ni alawm.

*KN : I sikul kal chhungin bazar note emaw, zirtirtute note siamah emaw i innghat*

*thin em? Text book i ring tawp nge note i insiam thin?*

TV : Pawl 10 kan zir laiin mathematics-ah trigonometry hi ka thiam thei thlawt lo va, chutah chuan note atangin ka zir a. A tlangpuiin textbook hi hriat bel ka tum a, hriat thiam nan note ka insiam chawp a, en nawn nan zirtirtute note siam ka hmang thin.

*KN : Eng nge zir zel i tum a, eng nge nih i tum le?*

TV : Sociology lak chhohva, U.P.S.C. exam beiha, Pathian zara ka lo tling te a nih chuan I.A.S. nih ka tum a. Mahse, tum dang pawh ka ngah mai. Pathian thu thu a ni e.

*KN : High School leh Higher i kal chhunga kohhran inkhawma i inkhawm dan tlangpui min han hrilh teh.*

TV : High School ka kal chhung khan a rem phawt chuan kan chhungkuain kohhran inkhawm pangngai (Nilai zan, Inrinni zan leh Pathianni Sunday School, chawhnu leh zan) hi chu inkhawm ngei kan tum thin a. KTP inkhawmah hian a chang

changin ka inkhawm thin bawk.

Higher Secondary School ka kal lai chuan phaiah hostel-ah ka awm a, chhuah zen zen a harsat avangin ka inkhawm ngai lo va. Ka rawn haw chang hi chuan inkhawm ka thlahlel thei hle.

*KN : A tlangpuiin zanah dar eng zatah nge i mut thin?*

TV : A tlai berah dar 11-a mut ka tum thin a. Hostel-ah phei chuan hnam dang hi an zir nasa si a, dar 2 thleng thleng te an zir thin a, chu vang chuan mut hma hi a harsa thei hle a ni.

*KN : Mizoram thalaite hian lehkhka kan zir nasa i ti em? Hei aia hmasawn dan tur hian engtin nge tan kan lak ang? High School leh Higher-a kal mek zirlaite hi i ngaih dan han hrilh teh le.*

TV : Ka hmuh dan chuan, hnam dangte zir nasat dan hi chu kan la pha lo hle a. Anni anga zir nasa ni ila chu kan thiam lehzual ngawt ang. Co-curricular activities-a tel hi a tha em em a; mahse, chu lama ral ringawt chu a hlauhawm ka ti a. Kan nun ba-



lance thiam hi a pawimawh ka ti. Tin, competitive exams (Olympiads, NTSE, etc.)-a tel hi a pawimawh ka ti hle bawka. Kohhran leh khawtlanga inhman pawhin lehkha zir thlahthlam loh hi a pawimawh bawka. A chin tawkhriat a tul ka ti.

*KN : I zirlai bakah lehkhabu dang i chhiar ngai em? Eng lehkhabute nge i chhiar thin?*

TV : Aw, chhiar thin e. Lehkhabu chhiar hi ka nuam tih zawng tak a ni a. Chi hrang hrang ka chhiar lawr teuh mai. Romance, mystery, fantasy, autobiography, biography, psychological thriller leh self-help book-te ka chhiar tlangpui. Historical background nei hi ngaihnamw ka ti zual a; a bik

takin holocaust behchhana ziakho hi.

*KN : Kum khat chhungin lehkhabu eng zat nge i chhiar?*

TV : Chawhrualin thla khatah lehkhabu panga vel chhiar ziah ang ka ni a, kum khatah chuan a tlem berah lehkhabu sawmruk chhiar ang ka ni.

*KN : Bible i chhiar ngai em?*

TV : Aw, kum tin chhiar chhuah ka tum ve thin a. Zan ka mut dawnin Our Daily Bread nen ka chhiar thin.

*(Teresa Vanmalsawmi'n kan zawhnate tha taka a chhan avangin kan lawm hle. A hun kal zel turah **Kristian Naupang** Editorial Board-in duhsakna kan hlan e. – Editor)*



**Thawh rimna hi lungngaihna min hmuaktu atanga chawlhna, min tawktu avanga chiaina laka chawlhna, sual min beitu laka fihlimna, khawvel ralkhel dar ri laka min la kiangtu a ni.**

– *F.S. Osgodd*

## ZU HI

Mughal Emperor ropui Akbar-a khan khawnbawl ropui leh fing tak mai Raja Birbal-a a nei a. Ni khat chu Akbar-a chuan Birbal-a chu, “Zu that lohna pathum han sawi teh,” tiin a zawt thut mai a. Birbal-a chuan –

**“Zu in mi chu an lu a tuak ngai lo.**

**“Zu in mi chu uin a seh ngai lo.**

**“Zu in mi chu rukruin an rawk ngai lo,” a ti a.**

Akbar-a chuan, “Zu in mite chan chu a va tha awm ve! I sawi fiah deuh thei em?” a ti a. Birbal-a chuan –

**“Zu in mi chu lu tuak thlengin an dam ngai lo.**

**“Kum naupang te pawh ni se an chak lo va, an chak loh avangin tiang an hawl thin. Tiang chu ui hlauh zawng tak a nih avangin uin a seh ngai lo.**

**“Zu in mi inah chuan thil hlu eng mah a awm loh avangin rukruin an rawk ngai lo,” tiin a chhang a.**

Birbal-a te hun lai (1528–1586) pawh khan zu hi an lo buaipui hle tawh a ni.

“Zu in thin lo se, ani kha chu a la dam ang”, “Zu rui lo se chuan khang kha a ti lo vang”, “Zu vang vek a ni,” tih tur a awm fo.

Zu hian chhungkuaah harsatna tam tak a thlen a. Heng natna – thin ro te, thisen sang, lung natna te hi thlenin thahrui tam tak a tichhia a, zun thlum leh thisen sang te nasa takin a siam thei a, thau chhia (Triglycedride) pawh nasa takin a siam thei. Anti-depression, antibiotics, na chhawka – heng damdawi ei laia zu in hi a tha lo hle a, side effect pawh nasa takin a siam thei niin an sawi.

*(Source – Hriat loh)*



## SAKEIBAKNEI LEH CHAICHIM

Vawi khat chu sakeibaknei chaw ei puar hi tui takin a muhil a. Chutih lai chuan tu emaw hian a hnungzangah rawn tumin a tuangah rawn pawt hian a hria a. Mahse, a mut a chhuah em avangin a ngaihsak duh lo va, a muhil zawm zel mai a.

Nakinah chuan a nghawng velah chuan thil eng emaw che vel awmin a hria a, a kutpah chuan a han hup a, chaichim te tak te hi a han man a. “Nang te reuh hi a! Chaichim te tak te! Ka hnungzangah te khan eng nge i tih? Ka mu tui hle tih i hmu reng a ni lawm ni?” a ti khur khur a.

Chaichim chu hlauvin a khur hlawk hlawk a. “Min ngaidam rawh, ka lalpa, ka lal ropui tak hnungzangah te athlak takin ka lo infiam a nih chu. Min khawngaih la, ka nunna chu zuah hram ang che. Eng tikah emaw i ngilneihna hi ka la thungrul ve ang che. Chu chu ka tiam a che,” a ti a. Ngaihdam a dil chiam a.

Chutia chaichim fak derna aw a hriat chuan sakei-

baknei thinrim pawh chu a lo nem ta thuai a. Mahse, eng tikah emaw a zahngaihna chu rul let ve leh tura chaichim intiamna chuan a nuih a tiza hle mai a. Eng pawh ni se, a chhuah ta tho va. “Aw le, ka chhuah ang che. Mahse, nang ang rannung te tak te hian engtin nge thil eng emaw min tihsak theih ang le?” tiin a zawt a.

Chaichim chuan, “Tet chu ka te viau va; mahse, ka fin leh zeina hi mite tan tangkai ve thei deuh a nia,” tiin a chhang a.

Ni tam tak a liam a, sakeibaknei chuan chaichim chungchang kha a hre reng ta lo va. Tlai khat chu, ni dang ang bawkin sa pelin a chhuak leh a. Vanduaithlak takin a kalna kawnga sa peltu

len zarah hian a awk ta tlat mai a.

Sakeibaknei chuan tal chhuah a tum chiam a, a beih nasat fe pawh chuan a chhuak thei si lo va. Chutia tal chiam chu a sawt lo tih a hria a, a beidawng chu a huk ta dur dur a. A hahum thawm chuan ngaw chhung chu a khawk rum rum mai a. Chaichim te tak te pawh khan a lo hria a. A kua aṅang chuan a rawn vak chhuak a, eng nge sakeibaknei tithinrimtu chu tih hriat tumin a rawn hnaih a.

Lenin sakeibaknei a awk tih a rawn hmu a. Chaichim chuan a va pan hnai a, “Ka lalpa, lo lungngai miah suh, ka chhuahtir thuai ang che,” a ti a.

Chaichim chuan a ha hriam tak chuan len chu a seh chhum ta hmak hmak a, rei lo teah sakeibaknei chu a chhanchhuak ta mai a! “Ka lalpa, Pathian zarah ka laka i ngilneihna chu ka thungrul thei ta che a ni tih chu hei i hmu ta e,” a ti a.

*(Aesop's Tales  
by C. Laizawna)*



## FAHRAHTE PATHIAN

– *Lalnunpuia (Kum 9)*  
*s/o Vanlalhruaia*  
*Junior Department, Sihphir*

Hmanlai hian khaw pakhatah fahrah pakhat, a hming Malsawma, nu leh pa pawh nei lo, rethei tak mai hi a awm a. A u nen chauh an awm a, a u chu mi hnuaiia inhlawhin an unau ei turin a inhlawh thin a. Sawma chu enkawltu leh zirtirtu mamawh em emin a awm a, a thianten Sawma chu hmusitin an tiduhdah em em thin a. Nu leh pa a neih loh avangin chhantu tur pawh a hmu zo lo va, a rilru a nat em avangin Pathian hnenah nu leh pate a dil hial thin a ni.

A harsatna tawh zawng zawngte pawh nu leh pa sawina tur a neih loh avangin Pathian hnenah a thlen thin a, a thiante erawh an nu leh pa bulah hlim em emin an awm thin thung a ni.

Ni khat chu Sawma chuan an thenawmpain a fate thu tha a zirtir lai chu a va hre fuh ta a. A tana tha tur hliir niin a hria a. Tichuan, Sawma chu nu leh pa nei lo mah se, a ngaihtuahna zawng zawng senga a thawngtai thinna chuan a nun a chhâwk hahdam a, fahrah a nihna chu

hre chhuak thin mah se, a thawngtai thin avangin Pathian chuan a awmpui a. A nuna hlimna leh lawmna tur hliir a tawng ta mawlh mawlh mai a ni. Tichuan, Sawma chu Pathian a thih em avang chuan nun dan mawi leh tha chhar zelin a lo awm ta a ni.

Hmun hrang hranga ka naupangpuite, Malsawma anga vanduaiana avanga nu leh pa nei lo, fahrah ngawih ngawihthe kan awm thei. He leiah nu leh pa nei lo mah ila, vana Pathian awm, engkim ti thei hnenah chuan

kan harsatna leh kan mamawh zawng zawng thlen nachang hria ıla, ani chuan min lo pui emin an awm thin thung a ni.

Ni khat chu Sawma chuan an thenawmpain a fate thu tha a zirtir lai chu a va hre fuh ta a. A tana tha tur hlir niin a hria a. Tichuan, Sawma chu nu leh pa nei lo mah se, a ngaihtuahna zawng zawng senga a tawngtai thinna chuan a nun a chhâwk hahdam a, fahrah a nihna chu hre chhuak thin mah se, a tawngtai thin avangin Pathian chuan a awmpui a. A nunah hlimna leh lawmna tur hlir a

tawng ta mawlh mawlh mai a ni. Tichuan, Sawma chu Pathian a thin em avang chuan nun dan mawi leh tha chhar zelin a lo awm ta a ni.

Hmun hrang hranga ka naupangpuite, Malsawma anga vanduinna avanga nu leh pa nei lo fahrah ngawih ngawihthe kan awm thei, he leiah nu leh pa nei lo mah ıla, vana Pathian awm, engkim ti thei hnenah chuan kan harsatna leh kan mamawh zawng zawng thlenna chang hria ıla, ani chuan min lo pui nasa dawn si a.



# Pathian mi ropui – Mother Teresa te, Sadhu Sundar Singh-a te chuan min pawisa leh thil an pek te, chawimawina leh lawmman an dawnte chu mi rethei zawkte hnenah an pe let leh thuai zel thin. Mi rethei zawkte hnena thil pek hi Pathian hnena pe kan lo ni reng mai.

*Lal Isuan engtin nge a tih kha? “Ka ril a tamin nangnin ei tur mi pe a; ka tui a halin in tur mi pe a; mikhual ka nihin mi thleng a; saruak ka nihin puan mi sintir a; ka damlohvin mi kan a; tan ina ka awmin ka hnenah in lo kal si a,” a la ti ang tiin Lal Isuan a sawi.*

I mihringpui, eng mi pawh ni se, i huat zawng tak pawh ni se, khawtlang tana hnawksak tak pawh ni se, mi sualte chung a that chhuah thin Isua hmingin an chungah that chhuah la, Isuan a chung a ti-ah a ngai dawn che a ni.

*Bible Thawnthu***UNAU PAHNIH**

Adama leh Evi-te chuan an ei tur leh thawmhaw tur buaipuiin rim takin hna an thawk a. Eden huan atanga hnawh chhuah tawh ni mah se, Pathian chuan a la hmangaih reng a, khawvela nau piang hmasa ber pein mal a sawm a.

An fa hmasa ber hmingah chuan Kaina tih an puah a. Nakinah chuan fapa dang an nei leh a, a hmingah Abela tih an sa thung a.

Kaina chu a lo thang lian a, lo neitu a lo ni a. Thlai te a ching thin a. Abela pawh chu a lo thang lian a, beram vengtuah a tang a. Beram a enkawl thin a ni.

Ni khat chu Kaina leh Abela-te chuan Pathian hnenah, a malsawmna an dawn avanga lawm thu sawi nan thil pek an tum a.

Kaina chuan a thlai thenkhat a rawn la a. Abela erawh chuan a beram zinga a piang hmasa ber a rawn la thung a.

A rilru takin lawm thu a sawi tih a hriat avangin

Pathian chu Abela thilpekah chuan a lawm a; Kaina thilpekah erawh chuan Pathian chu a lawm lo va.

Kaina chuan a nau chu a thik a, a thinrim ta hle mai a.

Pathian chuan Kaina hnenah, “Engati nge i thin a ur? Thil tha ti la, i hlim mai ang. Mahse, fimkhur ang che. Rilru sual chuan nungchang a tikhawlo vek thei a ni,” a ti a.

Mahse, Kaina chuan Pathian thusawi chu a ngaithla tha duh lo va. Ni khat chu Kaina chuan Abela chu lova fehpuiah a sawm a. Hmun fianrial deuh an thlen chuan Kaina chuan a nau chu a bei a, a that ta mai a.

A tukah chuan Pathianin Kaina hnenah, “Khawiah nge i nau Abela?” tiin a zawt a.

Kaina chuan, “Engtin nge ka hriat ang? Ka nau vengtu ka ni em ni?” tiin a chhang a.

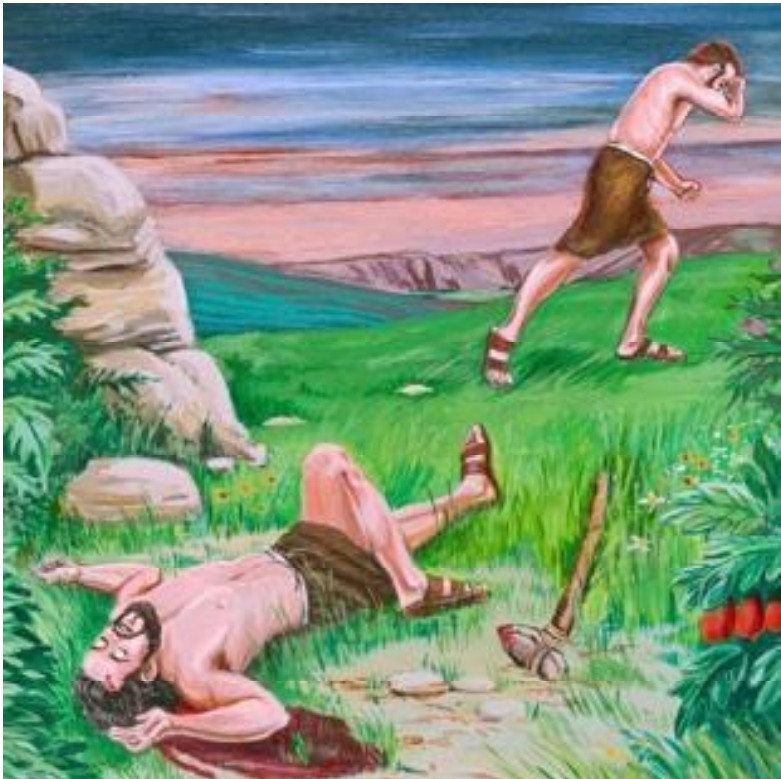
Mahse, Pathian chuan Kaina thiltih rapthlak tak chu a hre vek si a, “Leia i nau thisen luang kha ka hmu asin. Leiah i nau thisen i luanthir avangin leiin i tan rah eng mah a chhuah tawh lo vang. Tunah chuan ei tur zawngin i vakvai tawh ang,” a ti a.

Kaina chuan, “Lalpa, ka thil sual tih avanga mi hremna hi a na em mai! Heti hi chuan min hmu apiangin min that mai ang asin!” a ti a.

Mi’n an hmuha an thah mai loh nan Pathianin Kaina chu a chhinchhiah ta a.

Chumi hnu chuan Kaina chu a kal bo va, Eden chhak lam ramah a awm ta a.

*(Buatsaihtu : Lalremmawia)*





*Thawnthu fïng*

## SANGHA MANTU LEH A THURUALPUI

Vawi khat chu lal pakhat hian ruai a buatsaih dawn a. Amah chu sangha duh mi tak mai a ni a. Mahse, a ruaiyah chuan eng sangha mah a telh lo va. Sangha rawn keng apiang chu lawmman pek a tum thung a.

Nakinah chuan sangha mantu pakhat hian sangha lian tawk tak mai hi a rawn keng a. Mahse, kawngkhar vengtu chuan, a lawmman dawn tur chanve a pek ve dawn loh chuan a luh a lo phalsak lo va.

Sangha mantu chuan rem a ti a. Sangha a rawn ken avang chuan lalpa chu a lawm em em a, pawisa tam tak pek a tum a; mahse, sangha mantu chuan a duh ta tlat lo va. Chu aiah chuan kawr ruak haa a hnungzânga vawi za vuak a thlang zawk ta tlat mai a! Lal chuan mak a ti em em a; mahse, a chhiahhlawhte hnenah chuan, chu pa chu a duh anga vawi za vaw mai turin a ti ta a.

Vawi sawmnga an vuak hnuah sangha mantu chuan, “Tawp teh u! He thilah hian

thurualpui ka nei a, lawmman chanve chu a chan ve tur a ni ang. Amah chu kawngkhar vengtu kha a ni e,” a rawn ti ta mai a!

Lal chuan thil awm dan chu a hre thiam ta vek a. Kawngkhar vengtu chu kawr ruak hain a hnungzângah vawi sawmnga an vaw ve leh a, a hna ațangin an bân bawk a. Sangha mantu erawh chuan lâwmman țha tak a dawng ta thung a.

**A zirtir : Duhâm chu tuarna.**

*(Buatsaihtu : Lalremmawia)*



**Ramdinsanga, Junior Dept. Zuangtui**





# Hriatzauna Huang

- Lalremmawia

Tun tum chu kan chenna Mizoram chanchin thenkhat i han sawi ve leh thung teh ang.

## I. Mizoram dinhmun

District Council nih kum : Ni 26.4.1952  
 Union Territory nih kum : Ni 21.1.1972  
 State nih kum : Ni 20.2.1987

## II. Chief Executive Member lo ni tawhte

Lalsawia : 1952–1954  
 Ch. Saprawnga : 1954–1965, 1971  
 H.K. Bawichhuaka : 1954–1970  
 Zalawma : 1970, 1971  
 F.C. Nghina : 1971  
 Ch. Chhunga : 1971

## III. Chief Minister lo ni tawhte

Ch. Chhunga : 3.5.1972–10.5.1977  
 Brig. Thenphunga Sailo : 2.6.1978–10.11.1978,  
 8.5.1978–4.5.1984.  
 Lal Thanhawla : 5.5.1984–20.8.1986,  
 24.1.1989–29.11.1993,  
 8.12.1993–29.11.1998,  
 11.12.2008–....  
 Laldenga : 20.2.1987–7.9.1988.  
 Zoramthanga : 4.12.1998–9.12.1999,  
 10.12.1999–11.12.2008.

**IV. District dinhmun** (2011-a mi cheng tam dan indawtin)

<i>Hming</i>	<i>Mi cheng zat</i>	<i>2001–11-a punna %</i>	<i>Zau zawng (Sq.km.-in)</i>
1. Aizawl	4,04,054	24.07	3,576
2. Lunglei	1,54,094	12.29	4,536
3. Champhai	1,25,370	16.31	3,185
4. Lawngtlai	1,17,444	34.08	2,557
5. Mamit	85,757	36.59	3,025
6. Kolasib	83,054	25.92	1,382
7. Serchhip	64,875	19.12	1,421
8. Saiha	56,366	19.71	1,399
<b>Belh khawm</b>	<b>10,91,041</b>	<b>22.78</b>	<b>21,081</b>

**V. Tlang sangte** (A san dan indawtin, a metre zat nen)

1. Phawngpui	2,157	2. Lengteng	2,141
3. Sur	1,967	4. Lurh	1,935
5. Tan	1,929	6. Vapar	1,897
7. Chalfilh	1,866	8. Hrangturzo	1,854
9. Zopui	1,850	10. Tawizo	1,837

**VI. Lui liante** (A sei zawng km.-in)

1. Tlawng	185.15	2. Tiau	159.39
3. Chhingtuiptui	138.46	4. Tut	138.25
5. Tuivai	134.61	6. Khawthlang Tuiptui	128.08
7. Tuichang	120.75	8. Tuiriial	117.53
9. Tuichawng	107.87	10. Mat	90.16
11. Tuiptui	86.84	12. Langkaih	85.43
13. Tuivawl	72.45	14. Teirei	70.84
15. Tuirini	59.57	16. Serlui	56.35

*(Thu lakna : Statistical Handbook, Mizoram, 2012 leh Mizoram General Knowledge, Lalhmachhuana Zofa, 2012 Edn.)*



# HMUTHEITUA

Kawngpui sîrah Kûnga nêh kan ðhu ðûn a. Chutih lai chuan mipa naupang pakhat hi kawngah chuan a rawn kal a. Kûnga chuan mipa naupang chu, “Vâla, khawngaihin lo kal lawk teh,” a ti a. Naupang chu a lo kal a. Kûnga chuan, “Hei, Hmutheitua nêh kan inkâwm laklawh si a, khawngaihin saw lai dâwrah sâwn meizial min va lei teh a,” tih pahin pawisa phawrha pêk mai a tum a.

Mipa naupang chuan, “Ka pu, min ngaidam rawh, meizial ka lei thei lo, ka nu leh pain meizial hi khawih pawh an phal lo va; thil dang lei turin min tîr zâwk rawh, chutah chuan ka kal zâwk ang e,” tiin hawihhâwm takin a chhâng a. Kûnga chuan chu naupang chu a en

vang vang a, a nu leh pa a zah thiamzia chu a ngaihtuah a, a ngaisâng hle mai a.

Kûnga chuan naupang chu a bânah a vuan a, a hmai bul teah a en a, “Mâma, tu nge i hming?” a ti a, naupang chuan, “Ruattea,” a ti a. Kûnga chuan, “I nu leh pa i va zah thiam êm êm ve aw. Ka fate chuan kan thu hi an hnial an hnial ðhîn asin, nang chuan i nu leh pa thu i âwih a, an hmuh phâk loha i awm pawhin, an thu i âwih zêl a, i fel hle mai. Thu i âwih manah...” a ipte aţangin Rs. 50 a phawr a, naupang chu a pe ta a. Naupang chuan, “Ka pu, ka lâwm e,” a ti a, a kal sawn ta a.

Ruattean Rs. 50 a dawn chhan hi in hria em?

Ka'n hrilh ang che u.

1. A nu leh pa thu a âwih a, a nu leh pain, "Tih loh tûr," an tih chu a nu leh pa hmuh phâk loha a awm pawhin a ti duh lo zêl.
2. Hawihhâwm takin Kûnga a chhâng a, Kûnga ngaihsân zâwng tak a ni.
3. Meizial ni lo lei tûr chuan tirh a hnial lohzia leh aia upa a zahzia a tilang.
4. Kûnga hi mi pângngai tak leh mi thilphal tak a ni.

Ruattea nungchang

mawi tak te, a nu leh pa a zahna te, aia upa a zah thiamna te, a hawihhâwmna te chuan Kûnga rilru a hneh a, Rs. 50 a pe ta ringawt mai a ni. Chu chauh a la ni lo, Kûnga hian in a thlen hunah a fate fuih nân Ruattea nêna an inbiak dân zâwng zâwng hi a la sawi chhâwng baw k ang.

Ka naute u, aia upate zah leh, nu leh pa thu âwih hi malsâwm dawnna a ni a, dam reina a ni baw k. Theihngilh hauh suh u.



## ZAWNCHHUAH

A I A D D A H T I  
 P A R E T E P S A  
 A H U S H O K A B  
 N T I B I A Z I O  
 A E V L R M G R K  
 H M J I I A O D A  
 O A O K E P F N J  
 J T N H M U A A A  
 A M A T T H A I A

A chungahawrawp rem khawmah khian Isua zirtirte zinga 10 hming zeh bo a ni a, han zawng chhuak teh le.

.....

### Thla hmasaa mi dikna

~~M A B N A R A H A~~  
~~S E P Z O K G R I~~  
~~O I L T S B U E N~~  
~~D Z O A R T K B I~~  
~~O D M E S O R A N~~  
~~M A V I I U N L E~~  
~~D Z D T F A R S V~~  
~~T O N A K J T E I~~  
~~N A N O R B E H J~~

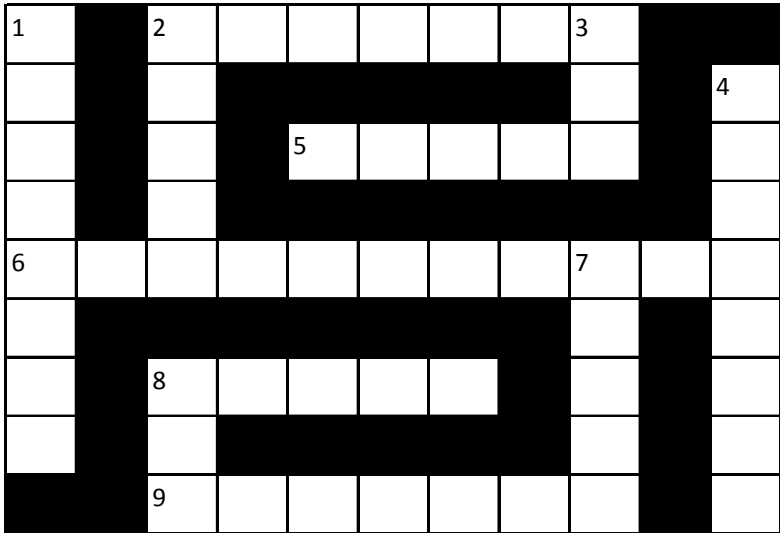
HRE THEI RAWH

1. Juda-ho zinga thawhlehna awm ring lotute kha tute nge?  
.....
2. Emmau kawnga thian dun kalte khan tu nge an kalpui?  
.....
3. Isua an khen beha a thusawi hnuhnung ber kha eng nge?  
.....
4. ‘Thingrem siamtu fapa’ an tih kha tu nge?  
.....
5. Isuan baptisma a chan lai khan Thlarau Thianghlim kha eng angin nge a rawn inlantir?  
.....
6. Khawi tlangah nge Isua kha an khen beh?  
.....
7. Isua zirtirte zinga ‘Phîra’ tia an koh kha tu nge?  
.....
8. Chanchin Tha bu palia Isua thiltih mak inziak vek kha eng nge?  
.....
9. Isua thu anga tui chungah kal ve kha tu nge?  
.....
10. Isuan ‘Sihal’ tia a koh kha tu nge?  
.....

**A dikna** : 1. Saddukai-ho; 2. Isua; 3. A kin ta; 4. Isua; 5. Thuro  
 angin; 6. Kalvari tlangah; 7. Thoma; 8. Mipui sangnga hra; 9.  
 Petera; 10. Heroda.

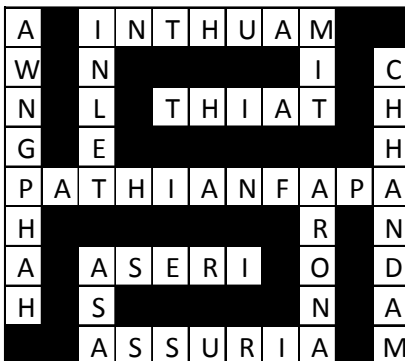


CROSSWORD



**A PHEI :** 2. Mihring chen lohna hmun (7); 5. Hrehawm tuar thei; tuar fei (5); 6. Lal inah an awm ve thin (11); 8. Buh vuakna hmun (5); 9. Mihring sawina chi khat (7).

**Thla hmasa CROSSWORD DIKNA**



**A CHHUK :** 1. Inneih lawmna ruai (8); 2. Tu leh fate (5); 3. Bat pe tla (3); 4. Uria nupui, Davidan a chhuhsak tak (8); 7. Thlai hnah chi khat (5); 8. Tu mah a nghak lo (3).

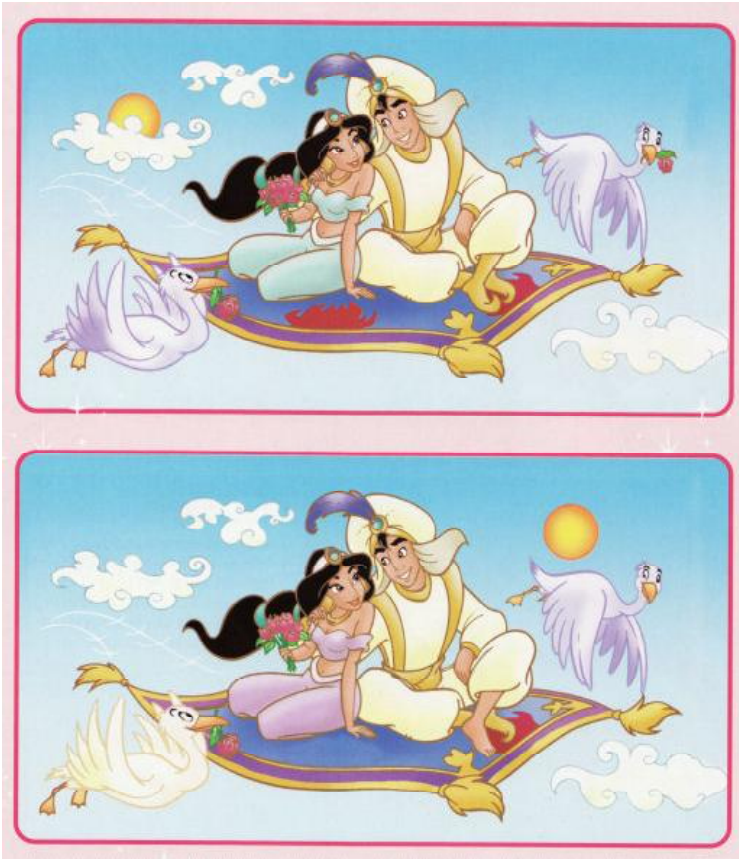
# CHEI RAWH LE!



A nalh theih dan ber turin  
han chei leh pawt mai teh le...



# KA HMUH ANG HMU THEI RAWH



*A chung a lemziak chi hnih khi ngun takin en la, a inan lohna chi ruk hmu thei rawh.*

A hnuaiah hian a chhanna lo ziak la:

- 1.....
- 2.....
- 3.....
- 4.....
- 5.....
- 6.....

To,



Maubawk West Naupang Chawhnu Inkhawm