

AUGUST 2016

# Kristian Tlangau

CHHUAH TAN KUM - OCTOBER 1911



**Min hmangaih zâwk em?**

- Thihna leh nunna
- Kan taksa temple hi i thian fai ang u
- Kohhran - Thlarau lam damdawi in

Editorial • Mizoram Synod • Lâwrkhâwm • Zawnha leh Chhâna

**Editor** : Rev. Dr. C. Chawngmingliana Ph. 2316411(R)  
**Joint Editors** : Rev. P.C. Pachhûnga  
 Upa H. Ronghâka  
 Upa Prof. R.L. Thanmawia  
 Rev. P.B. Mankima  
**Business Manager** : Upa C. Lalbiaktluanga  
 Synod Office, First Floor  
 Mission Vêng, Aizâwl – 796 001  
**Office Phone 2324590**; e-mail: [kristiantlangau@yahoo.co.in](mailto:kristiantlangau@yahoo.co.in)

**Kum khat lâk man : Rs. 50.00**

A man pe leh a bu la duh chuan Business Manager, Synod Office First Floor, Mission Vêng, Aizâwl hriattîr tûr.

Thu chhuahte hi Editor ngaih dân a ni vek kher lo.

**A CHHÛNGA THU AWMTE**

1. Editorial	1
2. Mizoram Synod	2
3. Lâwrkhâwm	9
4. Zawnha leh Chhâna	13
5. <b>Sermon:</b> (1) Min hmangaih zâwk em?	21
(2) Thihna leh nunna	27
6. Kan taksa temple hi i thian fai ang u	30
7. Kohhran - Thlarau lam damdawi in	34
8. Kohhran pawimawhna	40
9. Sûnna	43

**Synod Puipate**

**Moderator** : Rev. H. Lalrinmawia  
**Secretaries** : Upa H. Ronghâka (Sr.)  
 Rev. Lianhmingthanga Sailo (Jr.)  
**Finance Officers** : Rev. P.C. Pachhûnga  
 Rev. H. Remthanga  
**Statistician** : Rev. R. Lalchangliana  
**Sr. Executive Secretary** : Rev. Lalramliana Pachuau  
**Executive Secretary** : Rev. B. Sângthanga

**The Organ of the Presbyterian Church, Mizoram**



## Editorial

## HNAM ZE MILA CHANCHIN ȚHA TUH

Presbyterian Church of India, Mizoram Synod-in Ramthar Ni kan hman thla kan lo thleng leh ta reng mai. Kum danga kan tih Țhin angin kan rilru pawh ramthar lamah han dah deuh ila a Țha ang e. Chanchin Țha hril hi ‘kohhran hna pui’ tia sawi Țhin a ni a. “Kohhranin Chanchin Țha hril a ngaihsak loh chuan a nihna a hloh Țan mêk a, rawih tial tial chiah a hmabâk a ni,” an lo tih Țhin hi thu dik tak a ni. Pathian khawngaihna azârah Mizoram Synod chuan Chanchin Țha hril a ngai pawimawh a, department mal khaih chuan thawktu pawh a neih tamna ber a ni. Hei hi thlarau lama kohhran chawi nungtu pawimawh, ȚawngȚai tamȚirtu, awm hle hle thei lova Pathian awmȚirna pawh a tih theih ang.

Mission hna thawhnaa pâwl hriat hlawh tak, Council for World Mission (CWM)-in Chanchin Țha hrilnaa an chawi lâh tak pakhat chu Chanchin Țha dawngtuten an hnam ze chhawm tam thei ang bera Isua an rin dân tûr lam a ni a. Tûn hma chuan Chanchin Țha hrilnaa che nasa chu mi ngoho an ni a; sawrkâr chakna tipung tûr zâwngin Chanchin Țha dawngtute pawh an enkawl tel a ni mai thei. Ringtharte chu an hnam zia paiha Isua rintîr tûrin an kaihruai nasa a, chu chuan tûn thlengin hnam tam takah hnuhma a la nei.

Politics-a Țhan harhnain Chanchin Țha hriltute zia ang diak diaka Kristian nun inzirtîr ngaih theih lohna a hring chhuak a; chuwângin, ngaih dân awm sa Țhiata ngaihtuah dân thar lo piang zêl hi Chanchin Țha hrilnaah hian missionary-te leh kohhran mipui nâwlpui pawh kan inhawn zau zêlna tûr a ni ve ngei ang. Isua zirtîrna aȚanga pêng si lo, anmahni hnam zia chhawm tam thei zâwng zêla ringtharte kaihruai an nih hian Kristianna chu an hnam nunah an seng lût thûk deuh deuh ang a; Kristiannain ngaih mawh a hlawh lo ang a, ringtu nih pawh an harsat lo zâwk ngei ang.



*- Executive Secretary  
i/c Publicity, etc.*

### 1. Synod-in chhawmdâwlna pe

Tûn hnaia harsatna hrang hrang tâwkte hnênah Synod Relief Fund aţangin chhawmdâwlna hetiang hian pêk a ni:

Damlo/rethei chhûngkaw pariat hnênah ₹37,000; thli leh rialin in a tihchhiat chhûngkaw pali hnênah ₹14,000; in kâng ral vek chhûngkaw pakhat hnênah ₹8,000; thlipui tuar chhûngkaw pakhat hnênah ₹5,000; rethei chhûngkaw pakhat hnênah ₹4,000; lungrem chim vânga harsatna tâwk chhûngkaw pahnih hnênah ₹40,000; leimin tuar chhûngkaw paruk hnênah ₹82,000; damlo rei chhûngkaw pakhat hnênah ₹4,000. A vaiin ₹1,94,000.

### 2. Synod Revival Meet tuang taka hman a ni

Synod Revival Meet Vawi 5-na chu Bûngkâwn Kohhran Biak Inah June 3–5, 2016 chhûng khân tuang taka hman a ni. Meet-ah hian palai 601 lai an kal. A ţan zânah inlawmna inkhâwm hman a ni a, Rev. H. Lalrinmawia, Synod Moderator-in Pathian thuchah a sawi a, Synod Revival Director Rev. K. Rolungmuanan Synod Revival rawngbâwlna report a pe. Meet thupui ‘Thlamuanna’ tih chu Revival Speaker hrang hrangten an sawi a, Pathianni zânah Rev. Lalramliana Pachuau, Senior Executive Secretary-in Pathian thuchah a sawi a, inkhâwm bânah lênkhâwmna hun hman ţhin a ni bawk.

### 3. Zin

♦ June 16–25, 2016 khân Council for World Mission Assembly hmangin Jeju Island, South Korea-ah Rev. Lalramliana Pachuau, Senior Executive Secretary a kal.

♦ June 18 & 19, 2016 khân Education Campaign neihpuiin

Leithûmah Rev. B. Sângthanga, Executive Secretary a kal.

♦ June 17–20, 2016 khân Khawzâwl Vêngthar Bialah rawngbâwltu Seminar buatsaih a ni a, hemi hmanpui hian Rev. H. Remthanga, Finance Officer a kal.

♦ June 17, 2016 khân Armed Vêng Presbyterian English School-ah Upa D.P. Biak-khûma, Supervisor of Schools-in hun a hmang.

♦ June 23 & 24, 2016 khân John Williams Hospital Committee neihpuiin Lungleiah Rev. P.C. Pachhûnga, Executive Secretary a kal.

♦ June 25, 2016 khân Khawhai North Bialah Synod Sum Vawn Dân training buatsaih a ni a, hemi hmanpui hian Tv. Zaihmingthanga, Accountant leh Upa P.C. Vânlalrova, O/A-te an kal.

#### 4. KṚP

♦ June 9, 2016 zân khân Pi Zaii Hall, Synod Conference Centre-ah Mizoram Synod Choir (2016-2018) hlanna inkhâwm hman a ni. Rev. H.

Lalrinmawia, Synod Moderator-in Pathian hnênah member-te a hlân a. Rev. Zothansânga, CKṚP Leader-in fuihna thuchah a sawi bawk.

♦ June 6, 2016 khân Sialhâwk Branch KṚP Diamond Jubilee lawmnaah Upa Zonunmawia, General Secretary leh Tv. Robert Lalduhzuala, Committee Member leh Nl. Lalhriatchhûngi, Ramhlun North te an kal.

♦ June 8, 2016 khân Hlimen Branch KṚP Diamond Jubilee lawmnaah Pu Zonunsânga Râlte, Treasurer a kal a, June 10, 2016 khân Rev. Zothansânga, Leader-in hun a hmang bawk.

♦ June 11 & 12, 2016 khân Bûngtlâng Bial KṚP Meet hman a ni a, hemi hun hmanpui hian Tv. Joseph Lalsângzuala leh Dr. Lalrotluanga, Comt. Member-te an kal.

#### 5. MSSU

♦ June 11–12, 2016 khân Pûkzîng Bialah Sunday School Zirtîrtu Training buatsaih a ni a, hemi hmanpui hian Upa Lalthahluna Râlte, MSSU Asst.

Coordinator leh Pu Lalthan-chhûnga, Bûngkâwnite an kal.

- ◆ June 17, 2016 khân Zânlâwn leh Sêrkhan Kohhran chuan Sunday School Zirtîrtute tan joint training a buatsaih a, hemi hmanpui hian T.Upa Lalrosângâ Kawlni, O/A leh Upa C. Lalbiaksângâ, Zemabâwk North (MSSU Trainer)-te an kal.

- ◆ June 17, 2016 khân Nursery Vênglai Kohhranah Bial Sunday School Zirtîrtu training buatsaih a ni a, hemi hmanpui hian Upa Lalthahluna Râlte, MSSU Asst. Coordinator leh Upa Hrilthansângâ, Mission Vêngthlang (MSSU Trainer)-te an kal.

- ◆ June 24–27, 2016 khân Kêlkâng Bial leh Zâwlsei Kohhranah Sunday School Zirtîrtu Training buatsaih a ni a, hemi hmanpui hian Rev. Zoramsângâ, T.Upa F. Lalênghluna, Upa K. Zoremsângâ leh Upa Lalmachhuana, MSSU Trainer te an kal.

- ◆ June 25, 2016 khân Aibâwk Bialah Sunday School Zirtîrtute Training buatsaih a ni a, hemi hmanpui hian Pu John Lalhruaitluanga, MSSU Asst. Coordinator, Upa K. Vânlalngâka leh T.Upa Lalrosanga Kâwlnite an kal.

- ◆ June 25, 2016 khân Zemabâwk Bialah Sunday School Zirtîrtute Training buatsaih a ni a, hemi hmanpui hian Upa Lalthahluna Râlte leh Upa B. Lalhmunliana, MSSU trainer-te an kal bawk.

## 6. Campus Ministry

- ◆ June 9, 2016 khân Govt. Hrangchhûnga High School, Salem Vêngah hun an hmang a, June 10, 2016 khân Govt. KVM High School, Chhûnga Vêngah hun an hmang bawk.

- ◆ June 17 & 18, 2016 khân Sêrchhîp Presbyterian English School-ah Zirtîrtu Training leh Zirlai Retreat neihpuiin Rev. Lalchungnunga, Director; Tv. Lalhmunzauva Tlau, Counsellor leh Upa Dr. C. Lalremruata, Trainer-te an kal.

- ◆ June 22 & 23, 2016 khân Windsome English School,

Chhinga Vêngthlangah Zirtirtute pual Refreshers' Training leh Zirlaite pual Retreat neihpui a ni a, June 24, 2016 (Zirtâwpni) khân Blue Star Academy, Bâwngkâwnah hun an hmang a. July 1, 2016 khân ATC-ah seminar neiin hun an hmang bawk.

## 7. PRESCOM

♦ June 16, 2016 khân Synod Bookroom chuan kum tina an lo tih thin angin Synod Bookroom Conference 2016 chu Zosâphluia Building, Mission Vêngah an hmang.

Report aţanga a lan dânin kum kal ta khân Synod Bookroom budget ₹7,82,00,000 chu ₹12,75,05,054 zet thawk chhuakin ₹4,95,05,054 laia khûm a ni a. Synod Bookroom 1911-a din a nih aţangin kum khata a thawh chhuah tam ber ţum a la ni. Kum kal ta chhûng khân Net Profit ₹47,18,029 lai an nei bawk. Kumin Synod Bookroom budget ₹8,80,00,000 chu pharh a ni a, kum kal taa Bookroom rawngbâwna hrang hrang thlîr

lêtna leh sawi zauna hun hman a ni. Nikum chhûng khân Distributor thar pali – Chawngte, Vaphai, Sihphîr leh Sakawr-daihte hawn a ni bawk.

Hemi hnu hian kum kal taa Synod Bookroom Branch tha thlanna result puan a ni a, Rev. P.C. Pachhûnga, Executive Secretary-in Branch tiţhate hnênah lâwmman a sem a. Tehna ki hrang hrang palia inteh a nih hnuah hetiang hi kum 2015-a Synod Bookroom Branch tiţhate chu an ni:

*Pakhatna* : Lawngtlai Branch  
*Pahnihna* : Bâwngkâwn Branch  
*Pathumna* : Bazar Branch,  
 Aizâwl

Tûn dinhmunah Synod Bookroom hian Branch 12 a nei a, Distribution Centre 28 a nei mêk bawk. Kum 2016 chhûng hian Saiha-ah Branch puitling hawng thar tûra hma lâk mêk a ni a. Kum 2015 chhûngin Sêrchhîp leh Lawngtlaiah Bookroom building sak thar a ni bawk.

♦ June 27–30, 2016 chhûng khân Synod Bookroom, Thênzâwl Distributor Physical

Checking neiin Pu C. Vanlalhmuaaka i/c Distributor leh Tv. Lalhruaitluanga, Computer Operator-te an kal.

♦ Synod Bookroom chuan July 4-9, 2016 chhûng khân Mizoram puma Synod Bookroom Branch zawng zawng leh Churachanpur-a Synod Bookroom-ahte Reduction Sale an buatsaih a. Reduction Sale-ah hian Synod Bookroom-a bungruate 5%-80% discount-in hralh chhuah a ni a, mipuiin an hlut hle.

### **8. P.C. Girls' School-in Hostel Building thar hawng**

June 17, 2016 khân P.C. Girls' School-a Hostel Building thar chu Synod Moderator Rev. H. Lalrinmawian Pathian hnênah hlânin a hawng.

P.C. Girls' School Hostel thar hi a dung ft. 84, a vâng ft. 45-a zau a ni a. Floor 3 a awm a, a chung berah warden room leh study room a awm a. A laiah dormitory pathum leh a chhak lamah RCC tuizê dah a ni a. A hnuai berah Kitchen leh Dining Hall leh Dormitory pakhat a awm bawk. Kum 2014 May thla

bul aţanga sak ţan a ni a, kum hnih chhûnga sak zawh a ni. Tûnah hian hostel naupang 39 an awm mêk.

### **9. Revival**

June 7-12, 2016 chhûng khân Synod Camping Centre, Neihbawihah a duh apiang tân Gospel Camping buatsaih a ni a, speaker chu Pu Laldinthara, Gospel Meichher leh a team-te an ni. Camp-a lût zawng zawng hi mipa 174 leh hmeichhia 27, an vaiin 201 an ni a, damlohna leh eng emaw harsatna avânga awm tluan thei lo mi tîem azâwng an awm bawk. Camp-ah hian kohhran hrang hrang aţangin mi eng emaw zât an lût a, Aizâwl khaw chhûng leh pâwn aţangin lût an awm bawk. Ei rawngbâwl leh security lam hi Ramthar Kohhran Pavalai Pâwlin an buaipui a ni.

### **10. Mission Board**

♦ Kumin 2016 May thla thlenga Field hrang hranga ringthar neih tawh zât chu hetiang hi a ni: Arunachal East 38; Arunachal North 75; Arunachal West 110; Assam 29; Barak 164; Delhi 15; Jharkhand 505;



Karbi Anglong 58; Home Mission North 45; Home Mission South 154; Kolkata 332; Lucknow 109; Nepal 91; Patna 104; Siliguri 65; Tripura 651; Masihi Sangati 667; A vaiin 3,212 a ni.

♦ June 25 & 26, 2016 khân North Vanlaiphai Damdawi Vêng Bial chhông kohhran hrang hrangah Ramthar Campaign buatsaih a ni a, Synod Mission Board thawktute leh Board member-ten hun an hmanpui.

### 11. Trust Dept

♦ June 21, 2016 khân Tlungvêl Vêngtharah Pastor Quarters sak tûr enpuiin Pu Lalramênga Royte, JE a kal a, June 23, 2016 khân Pângbâl-kâwnah Pastor Quarters sak tûr a enpui bawk.

♦ June 22, 2016 khân Reiekah Pastor Quarters sak mêk enin Pu Thangliankhûma, AE a kal.

### 12. Aizâwl Theological College

June 22, 2016 khân Senate of Serampore College chuan BD Results a tichhuak a, ATC

aţanga BD Final Year mi 25-te chuan ţha takin an pass vek a ni.

First Class A- = 2, First Class-a pass-te hi Lalthanliana leh Lalnghâkmawia-te an ni.

Second ClassB+ = 8

Second ClassB = 13

Second ClassB- = 2

### 13. Worship Dept.

June 24, 2016 khân Ramhlun East kohhranah khuang vuak training buatsaih a ni a, hemi hmanpui hian Pu Lalromawia, Senior Instructor a kal.

### 14. Health Sunday & Hospital Sunday, 2016

July 3, 2016 (Pathianni) kha Health Sunday & Hospital Sunday (Damdawi In Pathianni) a ni a. Mizoram Presbyterian Kohhran chuan Hospital Sunday hi kum 1928 aţang khân a hmang ţan a, kumin Health Sunday & Hospital Sunday pual hian chawhnu leh zân inkhâwm programme siam a ni a, Synod Hospital, Durtlânga thawktu ţhenkhatten kohhran hrang hrangah hun an hmang.

### 15. SMTC-in Computer zir zo (Batch 17-na) thlah

Synod Multipurpose Training Centre (SMTC) chuan June 28, 2016 khân Certificate in Computer Application (CCA) Course batch 17-na zir chhuakte thlahna inkhâwm an hmang a, Pu Lalrinmawia Râlte, Minister i/c Forest, I.T., etc. chu khuallian a ni.

Tûn tuma SMTC Computer course batch 17-na zir chhuakte hi mi 18 an ni a, Computer Course zirna hawn a nih aţanga tûna zir chhuakte nêh hian mi 368 lain tha takin an zir chhuak tawh a ni.

### 16. Moderator Programme

Synod Moderator Rev. H. Lalrinmawia chuan hetiang hian hun a hmang –

♦ June 11–13, 2016

Kêlkâng Kohhran

♦ June 18, 2016 (Inrinni)

Zân : S. Vanlaiphai

♦ June 19, 2016 (Pathianni)

Chawhma : S. Lungpher

Chawhnu : Râwlbûk

Zân : Sangau

♦ June 25, 2016 (Inrinni)

Zân : Ngaizâwl

♦ June 26, 2016 (Pathianni)

Chawhma : IR Kohhran

Chawhnu : Vêngsâng, Khawzâwl

Zân : Vênglai, Khawzâwl

---

### Chanchin Tha puan darh

Vawi khat chu D.L. Moody-a hi Chicago kawthlêra a kal laiin zu rui pakhat hian, “Moody-a i ni lo a ni ang, i tihpianthar ka ni a, zu ka in leh tho,” a lo ti a. Moody-a chuan, “A dik ang, Krista tihpianthar i nih loh chuan,” tiin a chhâng a.

Chanchin Tha hian sual ngaihdamna chauh ni lovin nun thar min tiam a. Miin he Chanchin Tha hi a dawn chuan a nun a inthlâk ngei ngei thîn.

Vawi khat pawh Chicago kawthlêr thova a kal laiin pa pakhat hnênah, “Ka pu, Kristian i ni em?” a ti a. Chu pa chuan vin deuhvin, “I hna thawk mai rawh,” a lo ti a. Moody-a chuan, “Min hre thiam la, hei hi ka hna a nia,” a lo ti a.



### **Bible bung leh châng thiam theih dân**

Bible bu 20 en lova sawi chhuak thei Tom Meyer-a, Wordsower International Ministry member leh Shasta Bible College, California-a professor ni bawk chuan a lehkhabu chhuah thar ‘The Memorization Study Bible’ tihah chuan Bible-a thute hriat reng theih dân te, en lova tam tak sawi theih dân tûr zirna te a ziaak. He lehkhabu ziaktu Meyer-a chuan he lehkhabu hi Bible bu pum pui en lova kan thiam vek theih dân tûr zirna anga duan a ni tiin a sawi.

Bible châng sawia mi thiam bik, Meyer-a hi hmun hrang hrangah a thiam thil entûr hian a lo kal kual tawh thîn a. May 2015 khân a Wordsower member-pui Jason Nightingale nêen Nepal lirngêng tuarte tanpuina tûr pawisa tuak nân Bible thu hi en lovin dârkâr 24

chhông sawiin hun an lo hmang tawh a ni.

- CHRISTIANPOST

### **Cuba-ah Kristian pung chak**

Cuba ramah hian Kristianna hi an hnam nun zia hnuaiah hun rei tak chhông chu muang-chângin a kal ve bek bek a; mahse, tûn hnuaiah hian The Luis Palau Bible Institute leh The International Bible Society-te hmalâkna azârah nasa takin Kristiannain hma a sâwn a ni. Hêng pâwlte hian Bible sem bâkah Gospel training te neihpuiin Bible hriatna lamah mipuiten hma an sâwn nasa hle a ni.

November thla hian khawtual Pastor-ho hnênah a thlâwnin training an neihpui bawk dâwn a ni. Dr. Carlos Barbeiri, Luis Palau Bible Institute Director chuan an Pastor-te chu mi fîng tak tak ni lo mah se, an tumruhna leh huaisenna te, an tih hrâm hrâmna te hi mi dangte tâna entawk tlâk khawpin a ropui a ni, Pathian thu an duh mai bâkah, Pathian tân an inpe zo êm êm a ni, tiin a sawi.

Luis Palau Bible Institute te hian Cuba ramah hian Pastor 40 chuang chu training an neihpui tawh a, Pastor 200 chuang hnênah training neihpui leh tûrin an inbuatsaih mêk a ni.

- CHRISTIANHEADLINES

### **England leh Wales-ah Pathian awm ring lo (Atheist) an pung**

Zir chianna (research) thar bera a lan dânin United Kingdom-ah chuan a vawi khat nân sakhaw nei lo/Pathian awm ring lo (atheist)-te chu Kristiante aiin an tam zâwk a, a bîkin England leh Wales ramah a nasa lehzual a ni. St. Mary's Catholic University, Twickenham-a Theology and Ethics senior lecturer Stephen Bullivant chuan, "Sakhwana tel lova nun hmang hi an pung chakin, sakhwana inkhuahkhirhna hnuai sei liante pawhin tûnah chuan, 'Eng sakhaw zuitu mah ka ni lo,' tiin an sawi tawh a ni," a ti. The Guardian chuan he thu hi UK zawng zawngah chuan a dik kher lo, Scotland leh Northern Ireland-te telh chuan tiin an sawi a ni. England leh Wales-ah

erawh chuan kum 2014 khân mipui zaa 48.5-te chuan 'Sakhua ka nei lo' an ti tawh a ni. Bullivant-an a zir chiannaah chuan Anglican leh Catholic-a sei liante hian an sakhwana leh kohhran an chhuahsan/bânsan tam lehzual niin a târ lang a, Anglican puitling 10 zêla 4-te chuan an rinna an phatsan niin a târ lang bawk.

Pathian leh sakhwana lam ngaihsak lohna hian Europe lam hi tûn kum sâwm kal ta chhûng khân a tuam nasa êm êm a. Zir chianna hnukung berah chuan Norway mipui tam zâwkte chuan Pathian hi an ring tawh lo a ni. The Norway Monitor/Ipsos Norway-in a zir chianna chhângtu zînga 39% chuan Pathian hi an ring lo va, 37% in an ring a, 23% chuan chhâna mumal an nei thei lo a ni

- CHRISTIANPOST

### **Indiana (USA) Pastor inâwk hlum**

David James Brown (46) First Christian Church, Jeffersonville, Indiana, USA-a an Senior Pastor chu Atlanta khawdai fêma thil hlui dah

khâwmna hmunah inâwk hluma hmuh a ni. Brown hi June thla tîr lam khân Kentucky-ah kum tling lo mipat hmeichhiatna hmanpui tumna thubuai avângin police-ten an man a, court-a a chungchâng thu an rêl leh hma ni chiahin inâwk hluma hmuh a ni ta a ni.

Kentucky Attorney General Andy Beshear chuan June 16 vêl khân Brown hi Cyber Crime Unit-te enthlâk zîngah a tel a, amah hi online messaging app KIK-ah naupang anga a intâr lan vângin rinhlelh a ni. Police sawi dânin Brown hian an awmna hmun aţanga mêl 65-a hla Frankfort hmunah kum tling lo ni ngeia rin nêl inhmuh an tum a, a tum hmun a thlen chuan mipa dang kum 33 mi Anwar Mohammad te chu man an ni ta a ni. Electronic inbiakna hmanga kum tling lo mipat hmeichhiatna hmanpui tumna thubuai awrhîr an ni. A Pastor-na kohhran pawhin hetia case a kal chhûng hi chuan an chawlhîr rih a ni. First Christian Church-a an thalai Pastor Chad Bosecker chuan Brown-a chhûngte leh a kohhran tân ʔawngʔaisak tûrin mipuite a ngên a ni.

- CHRISTIANPOST

## **Karnataka thingtlâng hmunah Biak In suamsam**

Mi tu tih hriat lohten Karnataka state-a Udipi leh Dakshini Kannada district hmuna Biak In an suamsam chuan he lai hmun vêl a tirâlti hle a ni. He thil thlenna hmun hi Kundapura khua Bangalore aţanga 440 km-a hlaa awm a ni. Kohhran member-te zîng ʔawngʔai tûr chuan St. Anthony-a lim an tihchhiat chu an hmu a. He thil thleng vâng hian mipuite pawh pung khâwmin thil chhiate hi an en fiah a, police-te pawhin en fiahin case an file bawk a ni. Karnataka-ah hian Kristiante hi 1.87% vêl an ni a, ni 15 chhûnga Kristianten harsatna an tawh vawi hnihna a ni bawk

- CHRISTIANTODAY

## **Kristian dâwrkai Bangladesh-ah thah a ni**

Bonapara thingtlâng khuaa dâwrkai Sunil Gomes (60) chu a dâwr chhûngah sawisak hlum a ni. He khua hi Kristiante tamna hmun leh Bangladesh ramah chuan Kristiante awmna hmun

hmasa ber pâwl a ni bawk. Gomes thattute hi tute nge an nih chu hriat ni lo mah se ISIS te chuan an news agency Amaq kaltlangin an tih a nih thu an târ lang. Hetiang tualthahnaah hian ISIS-te hian an tih niin chhâl thîn mah se, Bangladesh sawrkâr chuan tualchhûng mite thiltih niin a ngai zâwk a ni.

Thla thum kal ta mai khân râltuam keng mi thênkhatin kum 65 mi Hossain Ali chu Bangladesh hmâr lamah an lo that tawh bawk a, kum 1999-a Kristiana inlet leh Chanchin Th̄a hril kawnga thawh hlâwk tak a ni. Hêng lo pawh hi Kristiante hian thah tuma vauna mai bâkah tihduhdah an tuar nasa êm êm a ni.

- CHRISTIANTODAY

## Russia ramah dân thar hman tum a ni

Firfiaka che th̄inte dona (anti-terrorism) atâna an dân duan thar ber an hmang a nih chuan Russia ramah hian Kristiante chu mi dangte hnênah e-mail emaw hmanga Pathian thu hrilh leh mi dang inkhâwm tûra sâwm te, in lama rawngbâwlina (house evangelization) te khap

a ni tawh dân a ni. He dân tharah hi chuan missionary hna hrang hrang – thu hril, zirtîr leh eng lam hawi pawha mi dangte mahni sakhuaa hîp luh tumna ang chi hi a rem tawh dân lo a ni. An rinna an puang duh emaw, mi dang hnênah an hrilh duh emaw a nih pawhin sawrkâr in phalna a pêk sakhaw pâwlte inhmuh khâwmna/inkhâwmnaah chiah an puang chhuak thei dân a ni. Biak In pâwn emaw sakhaw hmun pawimawh pâwn lamah emaw chuan mahni in emaw online hmang emaw pawhin Chanchin Th̄a hril hi khap a ni tawh dân a ni.

Russia rama Protestant kohhrante chuan he dân thar tûr hi tihhlawhtlin a nih lohna tûrin chawnghei tawngtaina te neiin an President Vladimir Putin hnênah lehkha an thawn bawk. Sergey Rakhuba, President Mission Eurasia leh Moscow hmuna kohhran dintute zînga mi chuan khawvêl hmun hrang hranga Kristian awmte tawngtaipui tûrin a sâwm bâkah Putin hian he dân hi a hnâwl a, Pathian thiltih mak tak chu a lo lan theihna tûrin a ngên a ni.

- CHRISTIANPOST

[www.mizoramynod.org](http://www.mizoramynod.org)



***Vânlalmachhuana, Dâm  
Vêng Aizâwl zawhnate***

***Z.1. Pastor-in innei tûrte thu a zawhnaah hian tûnah in inneih a rem lohna a awm chuan in sawi (puang) tûr a ni tih a ni a. Tûn hma deuh kha chuan Pastor kha an ngawi deuh vang vang a, tûnah chuan in inneih a rem lohna a awm chuan in inpuang tûr a ni, a awm loh chuan tiin a sawi zui nghâl a. Innei tûra inpeih vek tawh, taksa inthuumna pawh a mawi thei ang bera inthuum tawh kha, a mualpho thei ang ber dinhmun, a rem leh lo, tia sawi duh ang chi te kha (tûn hma deuh kha chuan mipuite kha zâwtin, a rem lohna hria, sawi tûr nei kan awm chuan tiin a zâwt thîn a). He lai thu hi chu siam rem dân a awm a nih loh chuan paih tawh chi a ni lo maw?***

**Ch.** Tûn hma deuh i tih hi eng hun chiah nge i rawn sawi lo va,

a kum tal han sawi zeuh la th̄a tûr. Chuvâng chuan kei pawhin tûn hma deuh ka rawn ti ve zêl mai ang chu. “Pastor kha a’n ngawi deuh vang vang a, tûnah chuan in inneih a rem lohna a awm chuan in inpuang tûr a ni, a awm loh chuan’ tiin a sawi zui nghâl a” i tih hi Pastor hi i ngawih tîr hma mah mah a, ‘inneih a rem lohna a awm chuan nangmahni in inpuang tûr a ni’ tih zawhah hian Inneih tîrtu tûr a ngawi vang vang zâwk th̄in. A ngawih vang vang hnu pawha innei tûra ten an inneih a rem lohna puan tûr an neih loh chuan, inneih tîrtu tûr chuan, “Puan tûr in neih loh chuan...” a ti chauh zâwk th̄in. Tûn hma lam kha chuan an inneih a rem leh rem loh mipui lam ngaih dân lâkna hi a awm th̄in hetiang hian- “...Chuvângin, he mite hi Pathian hminga an inneih a rem lohna hria in awm chuan tûnah sawi nghâl ula, tûna in sawi loh chuan kumkhuan tu mahin eng mah sawi tawh tûr a ni lo.” Tûnah chuan mipui lam ngaih dân lâkna remchâng hi paih a ni tawh a (Ni 14 lai lehkha târ hi mipui ngaih dân lâk nân kohhranin th̄a

tâwkah a ngai a ni ang), innei tûrte ngaih dân lâkna thu hi an telh ta zâwk. “Chuvângin, tûnah hian, Pathian hminga in inneih a rem lohna a awm chuan, nangmahni in inpuang zâwk tûr a ni...” tiin. Tûna kan hman mêk dân hi la ða tâwkah kohhran chuan a ngai a, paih tûl a la ti lo a ni ange.

**Z.2.** *Inneih thu chhamah hian ‘ka nupui tak, ka pasal tak ni tûrin ka hriattîr e’ tih a ni a. He lai thu hi tu nge a va address tak kha ni ta? Chuvângin, innei tûrtena thu chhamah hian Pathian leh mipui hmaah ka puang e, emaw, ka hriattîr e, tih emaw ni ta se, a thu hi a inlalâwn deuh ang em?*

**Ch.** *Ka nupui tak..., ka pasal tak ni tûrin tihah hian mipain hmeichhia a address-a, hmeichhiain mipa a address. Inneih thu chham kha ngun takin lo chhianawn leh la, ‘tih ka hriattîr e’ tih hi ‘ka nei ta che a ni tih Pathian leh a kohhranho hi ka hriattîr e’ tihna tluk a ni a, tûna inneihna thu chham kan hman lai mêk hi a tluang*

ða viau a ni lo’ m ni?

**R. Rokhûma, Khawzâwl**  
**Vêngthar zawhnate**

**Z.1.** *Ni ruk chhûnga Pathian thil siamah hian Genesis 1:8 tui leh tui inkâra boruak zau tak chu vân a vuah a, hemi vân a vuah a siam ni hian a en a, ða a ti hle tih a awm ve ta lo va, eng vângin nge ða a tih ve loh? Ni hnih ni a siamah hian ða a ti hle a tih a awm lo hi eng nge a chhan?*

**Ch.** Izawhna hi mi thiamte ngaih dân pawh a inruah chiah bîk lo. ða a ti hle a tih awm ve ta lo hi ziaik hmaih palh a ni ti pâwl leh hmaih luih a ni lo ti pâwl an awm. Hmaih luih a ni ti pâwl ðanchhan chu- ni hnih nia a thil siam hi ni thum nia thilsiam nêh hian a inzawm tlat a, ni hnih nia thil siam hi a la zawh chiah loh avângin ‘ða a ti hle a’ tih hi an dah duh rih lo niin an ngai.

**Z.2.** *Ni ruk nia a thil siamah hian a en a, ða a ti êm êm a, a ti bîk a, a chhan eng nge ni ang?*

**Ch.** “ða a ti êm êm a” tih hi ni ruk nia a thilsiam chauh ni lovin, ‘a thilsiam tinrêngte’ tih a ni a, a thilsiam zawng zawng tih tluk a



ni e.

**Z.3.** *Pathian thupêk theuh theuh si ei tûr chungchângah Genesis 9:3-ah hian thil nung chi tinrêng hi in ei thei ang a ti a, Mosia hnênah ei thiàng leh thiàng lo a sawi leh si a, Pathian thu theuh theuh eng vângin nge a inan loh?*

**Ch.** Izawhna hi i lungawi tâwkin chhân a harsa deuh mai thei. Hetiang deuh zawhna hi Kristian Tlângau-ah chhân a ni tawh a, i lo keu lét theih chuan a tanpui thei ang che. Mosia lehkhabu 5 kan tihhovah hian thu inkalh tak tak anga lang a tam mai. Entîr nân: mihring siam thua pawh Genesis bung khatah thu ringawtin Pathianin mihring a siam a, bung hnihah chuan hlumin Pathianin mihring a siam a, hnârah nunna thaw a thaw lût a, mihring chu mi nung a lo ni ta niin kan hmu a. Lawng chhûnga nunna nei chi rêng rêng dah luh tûra Pathian thupêk chu Genesis 6:19-20-ah chuan tuak khat zêl a nih laiin 7:2-3-ah chuan tuak sarìh zêl (sa thiàng lo chu tuak khat tih chauh loh chu) dah luh tûr a ti ve thung, a dang pawh a awm nual mai.

Hêng hi eng vâng nge ni ta ang? Mi thiamte chuan hetiang hian an sawi thîn. Mosia lehkhabu 5 ziaktute hian thu lâkna hnâr hrang hrang an nei a; chuvâng chuan thu pakhat ziak dân hrang a awm phah niin an sawi a. I zawhna pawh hi hêng kan mi thiamte chhânna aţang hian a fiah thei mai lo maw?

**R. Lalremthanga, Lungdai Hmârvêng zawhna**

**Z.** *Rev/Pastor tih hi thil thuhmun ang taka lang, ni chiah lo deuh niin ka lo ngai a. Kan pi leh pute hun lai kha chuan Pastor tih hi kan hriat dân leh sawi dân kha a ni a. Tûn kum sâng hnih hnu lamah hian Reverend (Rev) tih hi kan uar ta hle mai a. Kan Pastor bial vawngtu ngeite pawh hian Reverend (Rev) tih hi Pastor tih ai chuan an duh ta deuh nge ni. Bial vawn lai neite hi chu Pastor tiha Bial vawng lêm lo hmun danga awmte hi Reverend tih ni awm takah kan ngai a. Lam dân mumal deuh inhrilhfiyah ni thei se a va duhawm êm!*

**Ch.** Izawhna hi Kristian Tlângau zawhna leh chhânna huangah

hian ñum eng emaw zât zawh a ni tawh a, Editor hmasaten ña tak takin an lo chhâng tawh ñin a. Kristian Tlângauh hmân kum khân Upa R. Lalmalsâwman Article ngaihnawm takin a rawn ziak tawh bawk a. Tûn ñuma kan chhânna ñanpui tûrin Kristian Tlângau chhuak hmasa lam kha lo dap chhuak leh ta la tûn ñuma kan chhânna ñanpuitu ña tak a ni ngei ang.

Tûnhma lam khân Bial vawng chu Pastor, Bial vawng lo chu Reverend (Rev) ti khân inhrilhfiah ñin a ni a. Kohhran Pâwl ñhenkhat zîngah zîktluak taka Pathian Thu zirna leh nemnghehna pawh paltlang lêm lova Pastor Bial vawntîra, Pastor anga an cheibâwl ve mai an awm a. Chutiang mi te chu Pastor tiin an ko ve mai a, Reverend title erawh an pe lêm lo. Hêng kohhran pâwlte hian an rawngbâwltute zîngah Reverend kai pha chin leh Pastor ti chauhva koh theih an nei tihna a ni. Keini kohhran erawh chu chutiang chu kan ni ve lo. Mizoram Synod-in Pastor hna thawk thei tûra kan nemngheh zawng zawngte erawh hi chu zîktluak taka Pathian thu zir,

kohhran rorêlna zawh chhuak dapa nemngheh an ni a, Reverend tih phu vek an ni a, Reverend kan ti vek nghe nghe a ni. Rawngbâwlna thua erawh chuan office hmun ñthuah emaw Bial vawnga Pastor hna emaw an thawk thei vek a, Reverend tih theih vek an ni bawk (Reverend awmzia chu zahawm, zah tlâk tihna a ni). Eng hna pawh thawk se anmahni chuan inngaitlâwm takin, “Pastor chumi khami .... chu ka nia,” tia insawi an duh zâwk fo. Mipui lam erawh chuan anmahni zahna lantîr nân, “Hei hi Reverend chumi khami chu a ni,” kan ti ve hlahu thung.

### ***Râldothanga, Hriphaw zawhnate***

**Z.1.** *Synod Newsletter-a chhûngkaw chanchinah kohhranhoten Gospel camping an buatsaiha an hlimzia leh an hlâwkpuiziate kha târ lan a va ni ngai ta lo ve?*

**Ch.** Tûnlai pawh hian kan la chhuah zêl asin maw le, i lo chhiar chiang lo deuh a ni ang e. Lo chhiar uluk leh deuh teh.

**Z.2.** *Zîng ñawngtai inkhâwm kan neih ñin hi kan tih dân a*

*inang lo va. Khawpui lam chuan zai lovin dâr bi tukah an tawnḡtai mai a, thingtlâng lamah chuan zaiin tan hun nghah a ni thîn a. Synod lam aṭangin inang tlâng deuhva kaltîr chi a ni ang em?*

**Ch.** I rawtna hi rawtna âwm tak chu a ni ve reng mai. Mahse, *arpui mei ang* a tih dân inruai thep thepa kal vek hleih theih lohna lai hi a awm thîn a. Zîng tawnḡtai inkhâwm pawh hi Tualchhûng Kohhran remchân dân leh tlin tâwk ang zêla kal hi a la ṭha tâwkah Synod hian a ngai a ni ang e.

***Lalzâmlova, Ramthar  
Tlângvêng zawhnate***

**Z.1.** *Kristian Hla Bu chhuak hmasa No. 423-a ‘Engah kan lai nat ang?’ tih hla ṭha tak hi tûna kan Hla Bu chhuak tharah hian eng vânga paih nge?*

**Ch.** Tûna kan hla bu hman lai hi buatsaih a nih dâwn khân Synod Executive Committee chuan ‘hla 600 dah ni se’ tih leh ‘Mizo lêngkhâwm hla tam zâwk telh ni se’ tih a rêl a. Hetih lai hi Ṭhalai hla pun nasat lai leh vântlângin kan tuipei zual lai a nih avângin hla bua khung duhna a lian hle

bawk a. Synod Music Committee-in ‘khawvêl pum huapa hla sak lâr, kan hla bua la awm lote lehlina dah luh ni se’ tiin a rêl bawk a. Kristian Hla bua lo awm tawh sa kohhranin kan hman ṭangkai dân te thlîr a ni bawk a. Hla 600 dah tûra rêl a lo ni bawk nêh hla eng emaw zâtin hmun a chang ve ta lo va (a ṭhat loh vâng pawh ni chuang lovin), i hla rawn sawi pawh hi telh zui loh zîngah a ṭang ta a ni.

**Z.2.** *Tûna Kristian Hla Bu chhuak thar No. 52-na ‘Lal Isua hming i fak ang u’ tih hla ‘Âr ang kan vai tawh lâwng’ tih hla thlûka Biak Ina sak a nih hian thenkhatin Synod duh loh ang hiala sawina te awm hi eng nge a chhan? Lal Isua hming i fak ang u’ tih thlûk IV-na atân a solfa kim hian kan Hla Buah hian lâk luh ni nghe nghe se a theih lohna a awm em ni. A solfa kim hian Biak In inkhâwmah sa ṭhut ṭhut mai ila Biak In a timawi viau zâwk lawng maw?*

**Ch.** I rawn sawi ang hian he hla thlûk hian sawi a hlawh khawp mai a, chanchinbu lamah pawh a lo lang leh thîn. Kristian

Tlângau-ah pawh zawhna a lo awm leh zauh thîn. Kohhran thenkhatin lungawi takin an sa a, a thenin an sa hreh deuh thung a. Eng pawh ni se, Kristian Hla bua a thlûk telh ve kan duh a nih chuan Hla bu ennawn leh hunah rawtna rawn thlen ve mai chi a ni ang e, telh leh telh loh chu Committee thu thu tûr erawh chu a ni ang chu.

**H. Lalliana, S. Hmâr Vêng**  
**Z.1.** *Kan pâwla mi ni lo, pâwl dang an borala kan kohhrana an chhûng khat lainaten kan kohhranin vui tûra min sâwmin Bialtu Pastor-te vui a rem lo em ni?*

**Ch.** Zawhna tha tak a ni, i address-a **S.** khi eng tihna nge tih hriat a har deuh mai pawh a! Kan kohhran mi ni lo thi, vui chungchâng hi SEC 208:25 chuan hetiang hian a rêl a- Kan kohhran mi ni lo vui (thi) chungchângah kan Upate an sâwmin engtia kalpui tûr nge tih dân mumal kan la nei lo va, “Hetiang mi an lo awm a nih chuan mahni thua kalpui mai lovin, Kohhran Committee hriatpuia kalpui tûr a ni ang.” Pastor-in vui a rem em, rem lo

em tihah chuan inkaihhruaina kan nei hran lo va, hei pawh hi a chungsa SEC rêl zûlzui hian ‘mahni thua kalpui mai lovin Kohhran Committee hriatpuia kalpui’ a him ber ang.

**Z.2.** *Nupa inthen inko leh ni lêm lovin hmun dangah nupa ang maiin lo awm sela, inngaihna suala tlu anga thunun chi an ni em?*

**Ch.** An inthen hnuah **inneih sûtna lehkha** (Revocation Certificate) an lâk tawh leh la lâk lohini kori a tu khawp ang. RC an lo la tawh a nih chuan nupa an nihna kha sût a nih tawh avângin nupa an ni tawh lo tihna a ni a, an lo che sual a nih chuan thunun tûr ni âwm tak a ni.

**Upa K. Laltlanchhûnga, Karmel, Dârlâwn zawhna**  
**Z.** *Chanchin Tha Luka 8:16 leh Marka 4:21 {Mizo (Lushai) Re-Edited 13}-naah a thupuiyah Kho hnuaiakhâwnvâr tia dah ve ve a ni a. Amaherawhchu, han chhiar hian kho hming rêng rêng hi hmuh tûr a awm bawk si lo va. Chanchin Tha Marka 4:21-ah hi chuan ‘hrai’ tia dah chu a awm a. Mahse, hrai tia*

*dah chu kho hming tlukpui a ni e tih ngawt lah a dik bawksi lo va. Engtia ngaih chi nge maw ni dâwn le?*

**Ch.** A lo nih tak hi maw le! A thupui hi chu 'hemi hlâwmah hian eng thu nge awm' tih hriat theihna atâna letlingtuten an dah mai a ni a, a chhûng thu ang thlep tak tak chuan *chaw tak khûka khûkpui* chi pawh a ni chiah âwm lo ve. Kan Bible hman laia Matthaia 5:15-ah leh Marka 4:21-ah hian **hrai** tiin dah ve ve a ni a. A ãawng bul Greek ãawngah pawh *modios* tih ve ve a ni a. Bible lehlin thar (CL) chuan **kho** tiin a dah ve ve thung. Tûnlai kan mi thiamhote hian **hrai** tih aiin **kho** tih hian a awmzia a phawk chhuak zâwkah an ngai a ni ang e.

Tin, Luka 8:16-a mi khi kan bible hman lai leh lehlin thar hian **bêl** tiin an dah ve ve bawksi a, a Greek ãawng lamah chuan *skenos* tih a ni, chu chu **bêl** (Eng. vessel) tihna a ni.

***Upa Haukhama,  
Chhingchhîp Vênghlun  
zawhnate***

**Z.1.** *Davida hovin chhiarpui an neih ãuma Pathianin anmahni*

*hrem nâna hripui a lêngtîr thua Gada'n Davida hnêna hruih zâwla maichâm siam tûra a hrilh ãuma hruih zâwl neitu hi 2 Samuela 24-ah Arauna a ti a, a leina man pawh tangka sekel 50 a ti a. 1 Chronicles 21:24-ah Ornana a ti a, a man pawh rangkachak zaruk a ti a. A hruih neitu hming a inang lo va, a man pawh a inang lo va, hei hi engtizia nge? Eng nge a awmzia? Engtia sawi rem tûr nge?*

**Ch.** I zawhna hi zawhna âwm tak a ni e. Arauna leh Ornana hi mi thuhmun an ni e. Arauna hi a hming hmasa, Ornana hi a hming hnuhnûng niin mi thiamte chuan an ngai. Tin, Arauna hi Hit mi hming, Ornana hi Hebrai hming niin an ngai bawksi. Temple sakna hmun tûra Davidan ram a leisakna man zât hi i rawn sawi ang hian Samuela lehkhabu leh Chronicles lehkhabu kan hmuh dân hi a inang lo va. 2 Samuela 24:25-a kan hmuh tangka sekel 50 hi a sakna hmun tûr man chauh tak tak a ni ang a, 1 Chronicles 21:25-a rangkachak sekel 600 hi Temple sakna tûr hmun bâkah a bul vêl ram pum

pui man a ni ang tiin mi thiam thenkhat chuan an ngai.

**Z.2.** *Lal Solomona nu hming hi 1 Chronicles 3:5-ah Bath-sui tih a ni a, 2 Samuela 12:24-ah Bath-sebi tih a ni a, mi pakhat koh dân hrang nge a nih, eng nge a awmzia le?*

**Ch.** Solomona nu hming hi Bath-sebi a ni a, 1 Chronicles 3:5-a Bath-sui tih hi mi thiamte chuan tihsual niin an ngai. Bath-sui hi chu Kanaan hmeichhia a ni a, a lakah Jakoba fapa Juda'n fapa pathum Era, Onana, leh Sela te a nei (1 Chro 2:3).

**F. Chhannâwla, Lawngtlai Bazar zawhna**

**Z.** *Hmun pakhatath Pastor-in Lalpa Zanriah Sakramen a buatsaih a, Upaho maichâm hmaa an din hnuah Upa pakhat chu upa dingho hnênah chhang leh uain a semtîr a. Upaho kha Pastor-in chhang leh uain sem vek tûra ka lo ngaih laiin Upain a upatpui hnênah a sem ta mai a. Khatiang kha kan Synod hian a kalpui thîn rêng nge, tûn hma lamah te an lo ti tawh thîn em ni? Ka thil hriat ngai loh a nih avângin ka rawn*

*zâwt a ni. Min hrilhfiah theih chuan ka lâwm hle ang.*

**Ch.** Hetiang chungchângah hian inkaihhraina/dân kan nei rih lo niin a lang a. Kan kohhranah hian tûn hmain inkhâwmpuiah a ni emaw, kohhran malah a ni emaw Pastor-in sakramen a thehin Lalpa dawhkân kilpui tûra a sâwmte hnêna chhang leh uain sem tûrin mi dang an pun ngai lêm lo niin a lang a. Hun eng emaw ti aţang khân (kum sâwm tam a la ni lo vang) Pastor thenkhatten inkhâwmpui nikhuaah mi an tam deuh avâng nge ni, Lalpa dawhkân kîlpui tûra a sâwmte kan lo tam tial tial vâng nge ni, sâwm bikte hnêna chhang leh uain semtîr chîng kan awm ta a. Hetianga sâwm bikte hnêna chhang leh uain sem tûra phungbawm sâwmte hi Ordained Minister an ni thîn nghe nghe a. He thil hi kan intihhmuh ta viau mai a, ngaihtuah chian chu a ngai khawp mai. Pastor Bial Inkhâwmpuiah leh zêla kan chîng/ti (practise) dâwn a nih pheih chuan a tha ber kher lo vang. Inkaihhraina Synod-in a siam thar a nih loh chuan kan tih ngai loh thil thar chin chhuah zêl hi chîng lo ila a tha ber ang.



## MIN HMANGAIH ZÂWK EM?

Johana 21:15

- Rev. K. Rolungmuana  
Director, Synod Revival

Kan thupui innghahna hi Isua, thihna hneha a thawh leh hnu, vâna a lâwn hmaa thil thlengte zînga pakhat, Simona koh nawwna thu tiin sawi ta ila a dik thei tho âwm e. Chu Simona chu Petera tia koh tâk kha a ni a. Lal Isua zirtürte hun tawn kha a râpthlâk zâwnga sawi dâwn pawhin a dik thui hle ang. Khatia an Lalpa leh hotu ber mai mualpho taka an tihlum hnu khân zahna te, manganna te leh hrilhhaina te nasa tak an tâwk ngeiin a rinawm. Chutianga beidawn leh hlauhthâwnna te nêna hun an hmana, engtin nge kan awm tâk ang tih ngaihtuaha an chi-ai dân türte han ngaihtuah hian an khawngaihthlâk hle a ni.

Chutih hnu chuan Petera chu thian dangte nêd dîl lamah, tûnhmaa an nunphunga lêt leh türin an rilru an siam mêk a. An lêt leh mek a ni. Lên an han dêng a, an hlwhchham tlat mai. Isua a lo lang a, tu nge a nih an hriat hma hauvin a puinha vângin an hlwhtling ta. Mahse, chu chu bul tan that lehna tûra thuhmahruai chauh a la ni. Isuan Petera zawhna a zâwt ta tlat mai, zawhna narân lo, phût nei, ropui si, thiltithei tak zawhna a ni a, a beisei loh zawhna a ni ngei ang. Hmangaihtuin a hmangaih hnêna khûnkhân taka a hriat duh a zâwt angin, “Hêngte ai hian mi

hmangaih zâwk em?” a ti ta khauh mai a ni. He zawhna hian Petera nun a khawih na hle ang. He zawhna hian bihchian a dâwl khawp mai. Ngun takin han ngaihtla ve teh, ‘Mi hmangaih zâwk em?’

Zawhna hi a fiah a, hriat sual palh theih leh hai rual a ni lo. ‘Simon, Johana fapa’ tiin a pa hming lam tel meuhin a zâwt a. A chhân hnuah pawh a ngai bawkin tum thum lai a zâwt a. Isuan a hmangaih leh hmangaih loh a hre duh a ni. Petera kê aţang ngeiin , nakinah ni lo, tûnah ngei, a hun lai la lain a hre

duh a ni. A zawhna a Chiang ang hian a hmanhmawh bawka ngawih bosan chi a ni lo. He zawhna dawngtu Petera hian mantîr a nih zâna wawi thum lai a lo phat thu te, an hna ngaia kal leh tûra thuthlûkna a siam dân leh an khawsak zui dânte a hre chhuak uai uaiin a rinawm. Arilru chuan a tel lova an khawhar dân te, an thlaphânzia leh miten an lo tih dân te, engtin nge miten an sawi zui dân te, engati nge min zawh loh, sawi tûr a tam vei nê a ti mai âwm e. Mahse, a tân chuan he zawhna hian amah a inhmuh chiantîr ber a. Anun atan a t̃ha ber si.

He zawhnaa hmangaihna thu hi hmangaihna sawina t̃awngkam zînga ropui leh thûk ber ang chi kha a ni a. Agape hmangaihna an ti deuh kher a. Tuarsak huam, tuarpua a nih nih nihpui huam hmangaihna te pawh ti ila a dik zêl âwm e. He zawhna hi chhâng tûrin Petera nun hi a inbuatsaiha a chhân hma hian a ngai tuahna a kal thuiin a rinawm khawp mai. Chhân ngei a ngai si. Chutih lai chuan amah ngeiin a lo sawi tawh. “Lalpa engati nge tûnah pawh ka zui

theih loh ang che? Nangmah avângin ka nun ka paih ang,” a lo tih thu te, “Lalpa i hnênah chuan tân inah leh thihnaah pawh kal ve ka huam asin,” a tih ziate kha a hre chhuak ngeiin a rinawm. Tichuan, a ngaiat thuin a chhâng ta. Nu leh pain an fate an hmangaih ang leh engkim huam hmangaihna ang hi chuan ka hmangaih lo che niin ka hria a. Nula leh tlangvâl inhmangaihna leh induhna ang vêl hi chuan ka duh chein ka hmangaih che alâwm a tihna a ni ber âwm e

Isuan a zawhnaah hian, “Hêngte ai hian” a ti tel kher a. ‘Hêngte’ tih hian kawh chi hnih a nei thei âwm e. Pakhatnaah chuan a t̃hian te, a rawngbâwlpuite leh Isua a lo zuipui t̃hinte a kâwk thei. Chu aia zau pawhin a mihringpuite pawh a kâwk thei âwm e. Bible min hrilh dân en leh amah a insawi dân en hian a thûkin a huaisen a, a huam nasa si a, mi dang tel lo pawhin kei chu i tân ka ding tlat dâwn a ni a tihna rilrute kha tûnah hian eng nge i dinna la ni zêl tiin a zâwt a. Hêngte ai hian tiin a bula mite



kâwk kual chungin ‘Mi hmangaih zâwk em?’ tiin a zâwt ta chat mai a ni. Tin, a zirtîr dangte hriata hetia han inzawh hi a ni thei dâwn em ni tihna leh a thuin a huam tho vângin.

A pahnihnaah chuan lawng leh sangha manna hmanrua leh an sangha man tâkte kha a ni thei bawk. Chuti a nih chuan ‘I eizawwna, i sum leh paite, i in leh lote ai hian mi hmangaih zâwk em?’ a tihna a ni ang. Petera khân, “Engkim kalsanin kan zui ta che,” a lo ti tawh a. Tin, mi eng emaw zâtin an thlahthlama, an kal bo hnu khân, Isuan, “Nangni pawhin kal bo ve in duh em?” a tih lai khân Petera ngei khân, “Lalpa tu hnênah nge kan kal ang? Nangin chatuana nunna thu i nei alâwm. Nang Pathian mi thianghlim chu i ni tih kan âwih ta a, hriat pawh kan hria e,” tiin huai takin thu i sawi kha a ni a. A nih leh eng nge i dinhmun ni ta zêl? I hna ngaiyah i lêt leh mêk a, i kal pêng chu a ni na a, ‘Tûnah hian engkim dang aiin Mi hmangaih zâwk em?’ a ti a ni.

Zawhnate chuan hmâna Gethsemane huana huai taka

ngûnhnâm nêna țang hnu Petera kha a tidul raih mai. Inthlahrung aw takin a zawhna chu a ngainat thu hlîrin a chhang ta a ni. Hmangaihtu tak tak hmaah hmangaihnaa chak lo nun chu a tui ral mêk a ni. Mahse, a chhâna chu pawmin a hna tûr a tuk nawn leh a, chu chu Berâmte chawm leh enkawl a ni. A ta ni lo, Lalpa ta enkawla, chawm tûra tih a ni. A hmangaihna chu a tâna thawhnain lantîr tûr a ni si a. Ama tân ni lovin, a chhûngte tân pawh ni lovin, Lalpa tâna thawk tûr a ni. Lalpan a tân leh a chhûngte tân a thawk ve thung ang.

Thuhritu ropui tak lo ni tawh, a tîra a hnathawh ðhin avânga pheikhawk nâwttu, George-a an tih chuan a hna thawh dân hetiang hian a sawi. “Tu pheikhawk pawh ni se, ka Lalpa pheikhawk nâwtah ka inngai a, ka nâwt ðhin,” a ti. Keini pawh Peteran Isua a hmangaih man chu a tâna thawka a pêk a ngai ang hian tih tûr kan nei a ni. Eng hna pawh thawk ila Lalpa hna min pêk a ni tih hriain amah kan hmangaihna hi lantîr ve zêl a tûl fo a ni.

Hmangaihna thu zâwttu hian a zawh chhan chu a hmangaih vâng a ni a. Hmangaihna chu hmangaihnaa chhân lêt a nih loh chuan natna a tling thei. Keini pawh hi Lal Isuan, “Mi hmangaih zâwk em? Hêngte ai hian mi hmangaih zâwk em?” tiin tûnah hian min bia a nih hi. Engtin nge kan chhân ve ang le?

Khawvêlah hian hmangaihna hlan tûr kan ngah hle mai. Dinmun leh nihna leh ropuinate hi hmangaihna hlan zawh awl tak a ni. Kan politics kalpui dân te, kan party feeling na lutuk te, ropui leh mite fak loh nih hlauhna te hian min thunun thui viau mai lo maw? Hêng thilte ai hian min hmangaih zâwk em? Lal Isuan min ti a nih hi. Kan chhûngkua leh mahni mi malte hi hmangaih a phal a, chutiang tûra min pêk pawh a ni. Mahni hmasialna vâng hian tuar min phal ang hi tuar kan inhuam lo fo thîn. Kan inpêk ve dân chin leh kan nun zia zawng zawng pawh min hre Chiangtu Isua chuan amah kan hmangaihna hlan hi min phalsak a ni.

Kan sawi tâk ang khân eng dinmun leh nihna pawh hian mawhphurhna ken tel bîk a nei zêl si. Mi mal, chhûngkua, khawtlâng leh ram thilah pawh ni se, a dang chuang lo, mawhphurhna hlen tûr a keng tel zêl thîn. Taksa leh thlarau lamah mawhphurhna keng tel lo eng dinmun leh nihna mah a awm lo. A nihna takah chuan Pathian nêl lo chuan engkim hi a famkim lo va, a hlut tûr ang takin a hlu zo hek lo. Chutiang thil tam tak nêna khaihin chuan, hêngte ai hian mi hmangaih zâwk em tîh hi min biakna thu pawimawh tak chu a ni. Sum leh paite hi Pathian aia hmangaihna leh theihna zawng zawng pêk tlâk a ni lo, ropui teh nân a tlâk tak tak hek lo a ni. Chûng thil ai chuan min hmangaih zâwk em a la ti zêl mai. Chu mai a la ni lo va, kan eizawnnate ngei pawh hi a huam vek mai. Eizawn nân sawrkâr hna te, sumdâwnna te, huan leh lo neia thawk te, contract leh inhlawhfâknate kan hmang a. Thênkhat chu kan eizawnnah kan tui vak loh laiin, thênkhat chu kan tui leh lutuk a, Lalpa tân hun pawh kan pe phal meuh lo.

Chutih lai chuan Isuan min zawh chu, ‘I eizawna ai khân min hmangaih zâwk em?’ tih hi a ni.

Isuan lungkhamna chungchâng sawiin, “Eng nge kan ei ang emaw, kan in ang emaw, eng sinin nge kan awm ang emaw tiin in taksa thu lungkham suh u,” a tih rualin, “A ram leh a felna chu zawng hmasa rawh u,” min ti a nih kha. Chu chu amah hmangaihna hi a ni. Hmangaih tûr dik hmangaih hi a tûl a ni. Mosia chu Hebrai ziaktu chuan, “Pharaoa fanua fapaa vuah a duh lo va, Pathian mite nêna tihduhdah tuar a thlang a, hmuh theih lohva chu a hmuh avângin,” tiin min hrihlh a. Tihduhdah pawh huama hmangaihna Pathian hnêna a hlan chu a tisial lo asin. Pathian chuan hna ropui thawhna hmanruaah a hmang ta a nih kha. Joba pawh kha a thiante leh a chhûngte ngei pawhin bei mah se, harsatna leh tuarna tam tak kârah Lalpa chu a hmangaihna a hlân tlat reng a, a tisial lo asin. A hmangaih Lalpa a lo che a, hnehna changin, Lalpan mal a sâwm a nih kha. Chutiang zêlin Nova te, Daniela te, Josefa te pawh an chak lohna

lai awm ve bawk mah se Lalpa an hmangaiha, an rin tlat avângin an chanchin hi a hlui thei lo, a la thar reng mai a ni. Thil dang thlan theih tam tak zîngah Lalpa hmangaih zâwk hi a lo va tha êm. Paula pawhin chutah chuan chakna thurûk a chhar a, lungawina nun a nei a, engkimah, thil tinrêngah lungawina a nei ta a ni. Hei hi ringtu chanvo a ni.

Lal Isua hian hmangaih hi a lo phu êm a ni. Min hmangaih avânga hmangaihna hi phût leh beisei a lo ni zâwk. Keimahni avânga a chung a thil thleng zozaita hi a va tamin kan va phu lo êm! Heti taka min hmangaiha min ngaihsak hi chu a âwm rêng a ni han tihna chhan tûr hi min hmangaih vâng mai lo chu thil dang rêng a awm lo a ni. Keimahni avângin vân ropuina a kalsan a, chawimawina leh ropuina thlahlel hlei thei lovin kan nihna min rawn tâwmpui a. Chu mai bâkah kan dam nân natna a tuar phah a, kan hlima kan lâwm theih nân thihna khawp hialin a lungngai a, kan thlamuan theih nân thlaphânna a tuar a, kan nun theih nân a nunna a hlân thung a ni. Heti khawpa kan tâna

hmangaihna lantirtu leh thil ropui min tihsaktu hi hmangaih a phu hliah hliah a ni. ‘Hmânah aiin tânah ka hmangaih zâwk che’ tia hmangaih thung hi a lo phu êm êm a ni. A tuar mêk lai pawha min tawngtaisaktu, “Ka pa, anni hi ngaidam rawh” tia min dîlsaktu hian, “Hêngte ai hian min hmangaih zâwk em?” I duh zâwng leh ngainat zâwng te, i kuta i kawl leh i neih rosumte ai khân min hmangaih zâwk em? I bul hnaia mi te, i rawngbâwlpuite ai khân min hmangaih zâwk em min ti a nih hi. “Isu ka hmangaih che, I hming vângin ka sual zawng ka kalsan ang” tia kan chhân lêt ve hi a phu hliah hliah a ni.

Kan hmangaihna chu engtin nge kan lantîr ang? Rinawmnain, a tâna rinawm hi kan tih tûr pawimawh tak chu a ni. “Isua tân rinawmah ka inpe” tiin hla kan sa thîn a. Chu chu ni tin khawsaknaah hian lantîr a tûl khawp mai a, chutianga kan tih chu min beisei nghe nghe a ni. Entîr nân: Ration Card siam thu te, Job Card siam thuah te, sawrkâr sum kan beisei dânah te hian thil ho tê anga lang hi thil

pawimawh tak a ni fo si. Rinna kawngah hian hma kan sâwn hlei thei lo kan ti thîn, Isuan tlêm tê chung a rinawm a ngaihhlut anga kan ngaihhlut loh vâng pawh a lo ni thei asin. Ani chu kan tân a rinawm êm êm mai a. Keimahni vânga thiam thu sawi lova a ngawih theihzia te hi a ropui thlâwt a ni. A tâna hlâwk tûr ni lovin kan tâna hlâwk leh tha tûr hi a nun kaihruaitu chu niin a lang. Kan hlim phûr nasat ngaihtuaha rah a chhuah hleih theih loh fona chhan chu nun lama rinawmna leh dikna hi a ni. Kan huai lohna chhan pawh hei tho hi a ni. Thil dik ang reng tak chu miin sual thila an thurualpui thîn leh an tihpui thîn hi an ngaisâng ngai miah lo va, chutiang kawnga an thurualpui hleih theih loh nun nghet hi an zah leh ngaihsân chu a ni zâwk fo.

Awle, Isuan, “Hêngte ai hian min hmangaih zâwk em?” a tih hi thinlung entu leh hretu a ni tih hre chung a Peteran tha tak leh dik taka a chhâng anga kan chhân ve theih nân leh he kumah hian ‘Isu ka hmangaih che’ tia kan biak ve thîn theih nân Lalpan a thu malsâwm rawh se. Amen.

## THIHNA LEH NUNNA

Genesis 2:16,17; Johana 3:16,17

*Upa F. Lalroliana*

*Armed Vêng*

**Thuhma:** Mihring tung chhova piang, thihna natzia leh râpthlâkzia la tem lo chhûngkua hi kan awm âwm lo ve. Ni e, kan hmangaih leh kan duh êm êm, kan lawm êm êm, an tel lova nung thei lo nia kan inhriat laia, he khawvêla inhmu leh tawh rêng rêng lo tûra min han liamsan hi chu a na a ni. Aw le, keinin heti taka nâ kan tih thihna, taksa thihna hi Pathian thuin engtin nge a sawi tih te, Pathianin thihna a tih hi eng nge ni tih leh nunna a tih chu eng nge ni zir chian i han tum teh ang u.

Pathian thua a lan dân chuan thihna hi chi hnih a awmin a lang a, chu chu thlarau thihna leh taksa thihna hi a ni.

**1. Thlarau thihna:** Hei hi a lo awm ãanna chu Eden huana a chhia leh a ãa hriatna thing, Pathianin Adama hnênah, “I ei tûr a ni lo, i ei chuan i ei ni la lain i thi ngei tûr a ni,” a ti a. Adama chuan a nupui Evi thu âwihin an ei ta a; chu veleh Pathianah chuan mitthi an lo ni ta a ni. Lalpa Pathian thâwm an hriat chuan an hlau va, an biru ta a. Pathian chuan Adama chu a ko va, “Khawiah nge i awm?” a ti a. Pathian hian Adama hi biru eng ang mah se a hmuh loh a rinawm loh, Pathian hmaah bihrûk theih

a ni si lo va. A awmzia nia lang ta chu, kan chhûngte an thi a, an ruang chu kan bulah a awm reng a; mahse, kan kohva eih tûr, biaka min chhâng tûr an awm tawh loh avângin beidawng takin, “Bawihthe, khaw nge i awm tâk?” kan tih ang hi niin a lang. ‘Ei suh u’ a tih kha an lo ei a, Pathian ngaiha mitthi an lo ni ta kha Lalpa Pathian rilru a na êm êm a, “Adam, khaw nge i awm tâk?” tiin Pathian chu a au chhuak hial a ni. Hetih lai hian Adama te nupa tisa/taksa chu an la nung reng a, Adama phei chu kum 930 lai a dam nghe nghe. Mahse, Pathian ngaihah chuan mitthi an ni si a, hei hi a ni, thlarau thihna chu.

**2. Taksa thihna:** Hei pawh hi Eden bawhchhiatna rah baw kha a ni. Khatia ei loh tûr an ei tâkah khân Pathian chuan hremna a pe ta a. Rûl hnênah chuan ran zawng zawng leh ramsa zawng zawng zîngah ânhhedawng a nih thu a hrih a. Hmeichhe hnênah chuan hrehawm taka nau a hrin tûr thu a hrih baw kha a. Adama hnênah chuan amah avânga lei hi ânhhedawng a nih thu te, rim taka ei tûr a thawh chhuah tûr thu te hrihlin, “Vaivut i ni a, vaivutah i kîr leh tûr a ni,” tiin taksa thihnain a hrem ta a. Thuhrihtu 12:7-ah chuan, “Vaivut chu a awm angin leiah a chang leh a, thlarau erawh chu a petu Pathian hnênah a kîr leh a ni,” a ti a. Tichuan, he kan tisa/taksa, vaivuta siam, vaivuta kîr leh tûra tih kan nihna hi taksa thihna chu a ni ta a ni.

Thuthlung thar lam kan en chuan Lal Isua chuan taksa thihna hi ‘muhil’ tih leh ‘thi’ tiin a sawi a. “Kan thian Lazara chu a muhîl ta a, a muhîl kai harh tûrin ka kal dâwn a ni... Lazara a thi a ni,” a ti a (Jn 11:11-14). Jaira fanu a kaih thawh dâwn pawh

khân, “Ṭap suh u, a thi lo ve, a muhîl a ni zâwk e,” a ti baw kha (Lk 8:52).

**3. Nunna:** Lalpa Pathian chuan Adama chu a thilsiam tinrêng enkawltu leh vêngtu atân a ruat a; a chungah mawhphurhna a hlân thlap a. Adama chuan rannung zawng zawng leh ramsa zawng zawngte chu enkawlin an hming te pawh a vuahsak vek a ni. Chutiang taka Pathianin a rin, thuneihna a pêka chuan ama duh thu ngeiin ei loh tûr chu eiin Pathianah mitthi a lo ni ta. Lalpa Pathian chuan a tuar nain pawh a ti êm êm a. Pathian tâna a natzia lanna Chiang tak kan hmuh chu, “Pathianin khawvêl a hmangaih êm êm a; chutichuan, a fapa mal neih chhun a pe a,” tihah hian kan hmu a ni (Jn 3:16). Pathian hian Lal Isua hi a fapa mal neih chhun mai pawh a ni lo, Luka 3:12-ah chuan, “Nang ka fapa duh tak i ni, i chungah ka lâwm êm êm e,” a ti a. Mathaia 17:5-ah chuan, “Hei hi ka fapa duh tak, ka lawm êm êma chu a ni, ama thu ngai rawh u,” a ti baw kha. Pathian hian Lal Isua hi a fapa duh tak, a neih chhun, a lawm êm êma a ni tih

chiang takin kan hmu a. Engati nge heti taka a fapa duh tak ni si, min pêk tâk tlat mai le? Eden bawhchhiatna avânga mihringte mitthi kan nih mai bâkah a hmêlmaa kan insiam ta kha Lalpa Pathian chuan nâ a ti a, a fa kan nih leha, amahah mi nung kan nih leh theih nân hmangaihna avângin a fapa mal neih chhun, a lawm êm êma chu nang leh kei atân min pe ta a ni.

Pathianin Abrahamana hnênah chuan, “I fapa, i fapa neih chhun, i hmangaih tak Isaka kha... hâlrâl thilhlannah hlân rawh,” a tih khân Abrahamana tân chuan a nain a va har dâwn tehrêng êm! Mahse, Abrahamana chuan Pathian a rin êm avângin a hlan ta tih kan hria. Mahse maw unau, Lalpa Pathian chuan a Fapa neih chhun, a lawm êm êma chu nang leh keia tân hian inthawi nân hâlrâl thilhlannah a lo hlân daih tawh nia. Lal Isua

tuarna natzia, sualna rêng rêng nei lo mi sual ber thihna krawsa a a thi hian Eden bawhchhiatna pawizia leh râpthlâkzia a lantîr a. Pathiana mi nung kan nih leh theih nân amah Pathian ngei chuan a nunna thaw/thlarau, a tîra Adama nunna kha krawsah chuan min pe leh a. Amah chu tu pawh a ring apiangin chatuana nunna chu kan lo nei leh thei ta. Eden kawngkhâr chu min hawnsak leh ta. Lal Isuan, “Kei zawng nun an neih nân, tam taka an neih nân lo kal ka ni,” a ti. Pathian hian hei lo hi chu nun kan neih leh nân sualte tâna inthawina a hlân tawh dâwn lo. He nun tak, nun tam, chatuan nunna hi kan neih tawh chuan he kan lei taksa hi chu thi mah sela kan nung reng a ni tih Lal Isuan min hrih kha i hre thar leh ang u.

Lalpan a thu malsâwm rawh se.

---

Kristian Scientist ropui Sir Michael Faraday-a kha chanchinbumiten an kâwm a. Thih hnu awm dân tûr chungchâng an zâwt a. Amah chu khum beta a nat lai a ni a. Ani chuan, “Ngaih dân ni mai lovin ka chiang a ni. Ka Tlantu chu a nung tih ka hre si a. A nun avângin kei pawh ka nung ang,” a ti a.

**KAN TAKSA TEMPLE HI I THIAN FAI ANGU**

Matthaia 21:12,13; 1 Korinth 3:16,17

*Upa Hrânglûta  
Keitum*

Israelte chu Aigupta ata tawh temple nei lovin kum 480 vêl an awm tawh a. Solomona a lo lal khân temple tha êm êm mai a han sa ta a. Feet 90x30x45 laia lianin lung hlin sak a ni a. Kum 380 zet a luah pawhin siam that ngai a awm lo a ni âwm e. Mahse, Babulon-in kum BC 586-ah a tichhia a, a hâl darh ta vek a, hei hi temple pakhatna an ti a.

A dawt lehah chuan Babulon chu Persian a rawn hneh ta a, Israel-hote chu an ramah kum BC 538-ah a hawtîr leh ta a. Tichuan, kum 70 zet temple nei lova an awm hnuin Jerusabela hovin an sa leh ta a, kum 14 vêl an sa a. Kum BC 515-ah an sa zo leh ta a, chu chu Jerubabela Temple an ti a ni. A satute hi sal tâng chhuak hlim, rethei tê tê an ni bawk a, a hmasa chu a tluk lo hle a ni âwm e.

A pathumna chu Heroda Temple an ti a, kum 495 lai a liam hnu chuan BC 20-ah Heroda Liana chuan temple a sa leh ta a, thla 18-ah an luah ta mai a. Mahse, an sa chhunzawm zêl a, rangkachak hlîr hlak tîin a luan a, a tle sût

mai a. Kum AD 60-ah chuan a sa zo va, kum 80 vêl a sa a nih chu. Mahse, kum 10 chauh an luah hman a, Rom sawrkârin a chhu chhe leh ta vek mai a, chuta tang chuan ram pum huap chuan temple an nei ta lo a ni.

Lal Isuan a tihthianghlim kha Heroda temple kha a ni a. (1) He temple hual chhûng pawns ber chu Jentail-te hmun a ni a, chu bâk chu an pêl thiàng lo, an pelh luih chuan tihlum mai tûr. (2) A dawt chiahi hmeichhe hmun a ni leh a. (3) A dawt leh chu mipa hmun a ni leh a. (4) A tâwp ber chu Puithiamho awmna a ni a. He hmunah hian inthawina maichâm te, insilna te, hmun thianghlim te, hmun thianghlim ber te a awm vek a ni.



**Engati nge Lal Isuan a tihthianglim?:** Sumdâwnna hmuna an hman vâng a ni. Jentail-te hmun chu bazar nân an hmang a, sebâwng te, berâm te, ðuro te, uain te, hriak te, chi te an zuar a ni. Inthawituten inthawi nâna an thilrawn kente chu Puithiamhovin an lo en dik a, ða an tih loh chu an hnâwlsak a, ða an tih chiah kha hman tûr a ni. Hla fê aţangten an rawn kal a, Puithiamin an lo pawm si loh chuan a buaithlâk êm êm mai a. Chutiang hunah chuan a pawisaa kena temple-a mi chu lei mai tûr a ni.

Mahse, he temple bazar hi rawngbâwlna leh mite tihzângkhaina a ni si lo, ðawp deuhva sumdâwnna a lo ni a. Entûr nân ðuro pakhat chu pâwn lamah chuan duli man a ni a, temple bazarah chuan chêng nga a ni. Duli chu chûng lai chuan ni khat hlauh ni ta se, tûnlai ni khat hlauh chu thingtlângah pawh chêng 250 vêl a ni a. ðuro pakhat chu pâwn lamah chêng 250 ni ta se, temple bazarah chuan chêng 2500 vêl a ni ang a, chuti a nih chuan Puithiamte chuan chêng 2500-in an hralh

dâwn tihna a ni a, a zuartute hian ðuro pakhatah chêng 2250 an hlêp a nih chu. Tin, tangka thleng thuah khân hetih hun lai hian Rom tangka leh Grik tangka hman a ni a; mahse, Puithiamte hian Phoiniki pawisa leh temple pawisa chauh an pawm a; chuvângin, pawisa hi thleng loh theih a ni lo a ni. Tichuan, thleng man an siam a, sekel chanve thleng nân tlangvâl chawhma hlauh hu vêl hi a chuanga pêk a ngai zêl a, chutiang rêng rênga zi nuai nuai chu Isuan a hmuhin a thinrim a, suamhmangten kawng laka mi an suam ang mai niin a hria a.

“Engati nge suamhmangte pûk ang maia temple hi in siam. Pathian biao ðawngţaina hmun tûr asin,” a ti a ni.

Keini pawh kan taksa, kan temple, Pathian chenna tûr hi sum leh pai, rualawhna, duhâmna te hian kan tibawlhhlauh mêk a ni. Ramin hma a sâwn a, mamawh a pung, duh zâwng a piang thar zêl a, kan thawh chhuahin a daih si lo. Sum kan zawnga duh tâwk kan hmu si lo, fimkhur a va ngai êm! Tûnlaiin sem a tam a, dawn a

tam a, a dawngtu lahin kan chan phâk tawh loh ni âwm thlengin kan beisei a, a semtute hnên kan thleng a, a semtute lah fimkhur a ngai, a dawng tûrte list kan siam laite hian Lalpa sâwm ve ngam a va tha êm! Sum leh pai hmu tûra kan luhchilh lai te hian he temple tibawlhhlawh zâwng chuan eng mah i kuah khâwm lo vang u. Lal Isuan, Heroda temple a tithianghlim ang hian, kan taksa, Pathian chênna hi i tithianghlim ve ang u. Kan tihkhawloh chuan Lalpan min tikhawlo ve ang e.

**Heroda temple-ah Pathian bâwm a awm ve ta lo:** Temple ropuina leh hlutna ber chu a chhûnga Pathian bâwm a awm vâng a ni. He bâwm hi thingri thinga siam a ni a, a len zâwng chu ft. 3.9x2.7 a ni. Rangkachak tîa luan vek a ni a, a chhîn erawh chu zahngaihna thutphah a nih avângin rangkachak hlîr hlaka siam a ni a, a sîr tuakah chuan cherup thla pahnih neiten thla an zâr khuh a, a laiah chuan zahngaihna thutphah chu a awm a ni.

Chu bâwm chhûngah chuan— Rangkachak bêl, mana

an dahna a awm a. Arona tiang chawr an dah baw k a. Thuthlunna lungphêk pahnih an dah baw k a ni. Chu bâwm chu malsâwmna bâwm a ni a, hmêlmate hnehna bâwm a ni baw k a, an hnênah Pathian a chêng a ni tih hriatna a ni baw k. Chu bâwm chu he temple-ah hian an dah ve ta lo va, dah tûr a awm ta lo a ni. Apawi hle mai. Keini pawh kan taksa Pathiana chênna temple-ah hian Pathian zahna bâwm, Pathian thu âwihna bâwm, inngaihtlâwmna leh dikna, rinawmna bâwm te hi kan lo dah tawh lo ang tih a va hlauhawm êm!

Davida chuan he bâwm hi a ngaina a, a pawm a, hmêlmate kuta a awm pawhin a la chhuak a, Lalpa hmaah a lâmpui a nih kha. Mahse, Davida hi han belhchian chuan a famkim lo ve khawp asin. Thisen chhuah mi a ni a, mi nupui a chhuhsak baw k a, a pasal a that zui, chutah Lalpa a thinrim a, Davidan a tuar phah. A fa a sùn a, a fate an inpâwngsual zui a, an inthat baw k. A fapa hlauvin thap chungin Jerusalem a chhuahsan a, a va râpthlâk êm!

Chu mai a ni lo, indo a thiam a, ram a zauh a, a lo ropui a, a chapo êm êm mai a, “Ka chak dân hi hriat ka duh, sipai eng zât nge ka neih chhiar rawh u le,” a ti a. A chakna chu Lalpa a ni tih an hrilh pawhin a chhiar luihtûr a, sipai chak leh huaisen nuai 13 zet a nei tih an hrilh chuan a lâwm hle mai. Mahse, Lalpa a lâwm lo. Zâwlnei Gada a tîr a, a thlan ngei ngei tûr thil pathum a hmaah chhawp chhuah a ni ta—Kum sarih chhông tâm, hmêlmate hlauva thla thum chhông tlân chhiat leh ni thum chhông hripui lên.

Thlan loh theih a ni si lo va. Ni thum chhông hripui lên a thlang ta a, ni thum chhôngin mi 70000 an thi hman a. Mahse, Davida hi a inchhîr a, “Lalpa, thil sual tak ka lo ti ta a ni, i chhiahhlawh khawlohna hi ngaidam ang che, âthlâk takin thil ka lo ti ta si a. I chungah, i chung chauhah thil ka tisual a, i hnênah ka rawn tlu lût tawp mai e, mipuite hian thil an tisual lo, keimah leh ka pa chhôngte chungah hian i thinur chu lo thleng mai rawh se,” a ti a ni.

A mawi hle mai, tlâwmna hi chu a ropui a ni. Lalpan a

ngaidam ta, a thil tihsual a râpthlâk tehlu nên. Heta ka sawi duh tak chu Pathian hmangaihna hi a makin a va thûk êm! Khawvêl rorêlna (court)-ah chuan thiam thu sawi tûr nei thâten thiam an chang thîn. Nimahsela, Pathian rorêlna (Kalvari court)-ah chuan thiam thu sawi tûr nei ve hlawl lo, “Mi sual ka ni, Lalpa, min ngaidam rawh,” titute hian thiam an chang thîn a, Lalpan an sualna zawng zawng nên a ngaidam thîn.

Hmeichhe sual pakhatin Isua ke bulah a hriak rimtui a sawh keh ang khân kan thinlung robâwm, chaponate, îtsîkna te, duhâmna te, sual chi tin mai kan thun khahna hi Isua ke bulah i sawh keh ve ang u. Kan sawh keh hun apiangah kan rimtui a lêng chhuak ve dâwn a ni. Kan awmna apianga Sodom leh Gomora, hremhmun rim nam vung vung thîn te kha Krista zârah Lalpa malsâwm ram rim kan nam tawh dâwn a ni. Kan taksa hi Pathian chênna tlâka thian faiin i tithianghlim ang u. “Nangni in thianghlim tûr a ni e, kei ka thianghlim si a,” Lalpan a ti a ni.

**KOHRAN - THLARAU LAM DAMDAWI IN**

- Rev. Rosiamliana Tochwawng  
Kottayam, Kerala

Kum AD 248 khân Rome lalber Philip-a hovin Rome khawpui kum sâng tlin ropui takin an lâwm a, an lâwm nasa hle a ni ang, an ennawm chhuahnaah ringawt pawh insual mi (gladiator) sâng chuang an thi a, ramsa hlauhawm pui pui eng emaw zât an tihlum a ni. Rome khawpui hi April 21, 753 BC-ah Romulus-a din nia hriat a ni a, chuta ãanga Rome-in kum sâng chhûng ro an rêl chanchin ziakna te pawh a lo chhuak a, ropui taka kum sâng chhûng rorêl thei Rome ropuina an lâwm a ni. Amaherawhchu, kum sâng jubili an lawm lai pawh hian an ram chu a tlachhe tawh hle tih an hai lo. Ram chhûngah helna a tam a, hmêlmaten an bei sek a, sum leh paiah a tlachhe mêk bawk si. Philipa pawh chu a kum leh lawkah Emperor thar Decius-an a rawn thlâk ta a.

Chu emperor thar chuan kum sâng chuang ropui taka lo ding tawh Rome ram ropui tak tlachhe mêk chu a han thlîr a, din thar leh tumin an tlâkchhiat chhan a dap a dap a. A chhan ni thei âwm tam tak zîngah Kristiante chu Rome tlâkchhiatna chhan lian tak pakhatah a ngai a. Rome khaw pathian te kalsanin an be ta lo va, chu bâkah Kristiante chuan salho nun dân ãa (slave ethics), inngaihtlâwmna, hmêlma te hmangaih, tharum thawh loh tih ang reng kha nun dân ãaah an ngai a, chu chuan Rome mite

rilru paukhauhna leh huaisenna a tibo niin a ngai.

Rome Emperor Decius-a chuan a lal ãan tih kum 249 kum tâwp emaw kum 250 kum thar hlim emaw lai vêlin, ‘Rome khua leh tui tawh phawt chu Rome Pathian hnênah inthawina hlan vek tûr. Chutianga inthawina hlânte chu lehkha (certificate) pêk an ni ang a, chutiang lehkha nei lo chu hrem tûr’ tih thupêk khauh tak chu a chhuah ta a.

Chu thupêk chuan Kristiante a nghawng na hle mai. Kristian tam tak chuan an rinna bânsanin Rome Pathian hnênah

inthawina an hlân a, thenkhat an tlânchhia a, thenkhatin thamna hmangin inthawina lehkha an lo nei a; chutih lain ringtu huaisen tam tak chu martarin an thi a, thenkhat na taka sawisak te an ni bawk a. Tihduhdahna a lo tâwp a, kohhranah erawh ngaih dân insual lian tak awmin buaina nasa tak a lo chhuak ta a ni.

Tihduhdahna a lo reh a, tihduhdah huna lai rinna phatsantu tam takin kohhrana rawn kîr leh an duh a, chutah tak chuan kohhrana rinawm taka lo awm, rinna phatsan ve lote zîngah ngaih dân a inthen ta phawk mai a. Pâwl khat chuan rinna phatsan meuh chu ngaihdam theih loh soal a ni a; chuvângin, hêng mite hi engti kawng mahin kan ngaidam tûr a ni lo va, kohhranah kan seng lût tawh tûr a ni lo, an lo luh leh chuan kohhran thianghlimna an tibawrhbâng ang, an ti bur mai. Lehlamah thung chuan pâwl dangin hêng mite hi martarte tawngtaisakna avângin an sualte ngaihdam a ni a, Isua pawhin "...in zinga mi pahnih an thil dil kawnga an thurual chuan ka Pa vâna mi

tihsakin an awm ang" (Mt 18:19) a ti a; chuvângin, martar pahnih talin an dîlsak chuan an sualte ngaihdam a ni ang. Chuvângin, lawm taka awlsam taka lo pawm leh mai tûr an ni e, an ti thung a. Kohhranah inhnialna leh inhrui pawhna nasa tak a lo thleng a, kohhran inlungrualna a ngîng a, an phel dâwn ta mai a.

Hetih lai tak hian Bishop ropui tak, Cyprian-a (Cyprian of Carthage) khân chu buaina chu a rawn thelh ta a. A duh rumho (rigorists)-te chu demin 'hêng kan unaute hi Setanan a hliam a, hremhmun lamah hnuh luh a tum mêk a, chûng mite chu kan chhan chhuakin an hliamte chu kan tidam tûr a ni,' a ti a. A pawmzamho (laxists)-ho pawh demin 'sual râpthlâk tak hi chutianga ngaihzam mai mai tûr a ni lo ve,' a ti bawk a. Kohhran hi Pathian damdawi in a ni a, سوالin a hliamte chu rawn hruai lût ula, an nat dân ang zêlin damdawi kan pe ang a, kan tidam tûr a ni a ti. Kohhranah chuan mi sualte pawh an leng vek a, سوال an sima an damna tûra lo enkawl hi rawngbâwltute

mawhphurhna a ni a, damloten daktawrte enkawlna an dawng ang hian hêng mite pawh hian rawngbâwltute enkawlna an dawng tûr a ni. Amaherawhchu, damlo pawhin damdawi in a pan duh loh emaw, daktawr te enkawlna ring lo leh dawng duh lova an tlân chhuah chuan an natna chu an thihpui mai dâwn a ni. ‘Kohhran pâwnah chhandamna a awm lo,’ ‘Kohhran ðhen darhna hi phatsanna aiin sual nasa zâwk a ni,’ ‘Kohhran hi nu anga nei thei loten Pathian hi paah an nei thei lo,’ tih te kha a thu vuakthlâk a ni.

Kohhran hi eng angin nge kan ngaih? Mi sualte damna hmun, mi sual, thlarau lam damlote tâna damdawi in niin kan hria em? Nge mi fel leh sualna nei lote pâwl, a sual apiang hrem tûr pâwl thianghlim? Mi tam tak chuan kohhran hian zu zuar, zu rui, eiru, leh a sual deuh apiang chu thunun nghauh nghauh se an duh a, chumi kawngah chuan kohhran an duh khawp lo hle. Kohhran hi sual haw lo leh mi hlemhlete chungâ dân lek ngam

lo ang hialah an ngai niin a lang. Kohhran hi a thianghlimna lam ngaihtuah chuan mi sualte tel vena tûr a ni lo, kohhran member zînga thil tvisual pawh hrem hmak hmak mai tûr ni âwm tak a ni.

Kohhran hian sum kan duh luat vâng emaw, member ngah hrim hrim kan duh avâng emawa sual hi kan ngaizam a nih chuan chu chu Pathian duh dân a ni hauh lo vang. Sual nêh hian kan insiam rem thei lo; kan hmêlma, kan do tûr a ni. Amaherawhchu, chu sualin a hrên behte chhan chhuah chu kan hna, theihtâwp chhuaha Krista rilru pua khawngaihna leh lainatna nêna kan thawh tûr a ni a. Chuvângin, mi sualte tân kan inhawng a, ringtute zînga sual lam kawng zawh an lo awm pawhin chhan chhuah leh tumin kan bei a ni. Dân leh a hremna aiin hmangaihna leh lainatnain mi tin kan thlîr ðhîn a ni. Kohhran hi Pathian hmangaihna leh khawngaihnaa innghat a ni a, dân sakhua (legalistic religion) a ni lo. Mi ðhate chauh awmna tûr a ni lo va, mi sualte lam tûra lo kal

Isua rawngbâwl hna chhunzawm tûr a ni. Mi fel leh mi sual thliar hranga, mi sualte hrem tûr a ni lo. Khawngaihnaa tidamtu, zâwldawh chungu rawngbâwlsaktu a ni.

A nih leh engati nge kohhran hian a mite suala tlu a thunun thîn? Engati nge inngaihna suala tlute hi kan thunun hmak hmak a, eirute kan thunun hleih theih si loh? Thil sual ti zawng zawng kan thunun em tih te hi kan rilruin a zâwt thîn. Chhân fel mai pawh a har hle. Kohhranin thil sual tite chungah thununna kan lek thîn hi an sual avânga hremna a ni ber lo. Miin thil sual an ti a ni tih an hriata, inhhîra an sim theihna tûr leh kohhran thianghlîmna atâna khawngaihna leh lainatna nêna thununna a ni. Hremna (punishment) pawh ti lovin thununna (discipline) kan ti. Pain fa a hmangaih a, a thunun anga thununna a ni. “Lalpa chuan a hmangaih chu a thunun thîn a, fa a lawm apiang chu a vaw thîn asin ni” (Heb 12:6) tih ang khân.

Davidu khân Uria nupui a uire a, sima inhhîr aiin chu sual chu thup bo a duh. Thup bo tumin ruahmanna a siam a,

Uria a ko haw a, a nupui bula mu tûrin a ti phawt. Uria kha a nupui bulah khân mu ta se, nau a lo pai pawhin a fa angah ngaiin Davida sualna chu thup bo a ni mahna. Mahse, chu ruahmanna chu a hlawhchham, ruahmanna dang siam lehin Uria chu râl hmatâwngah dahtîrin a thih phah ta. Uria nupui chu a nei a, vântlâng ngaihah chuan a thiang mai ni lovin lal ngilnei tak, a sipai hotu nupui thihsan hmeithai mai tûr khawngaiha nupuia nei ang pawhin a lang mahna. Hetiang hian a thil sual tih thup thei zêl ta se, Davida chu Pathian lak aţangan a tawlh bo hle mai thei.

Davidu hi Pathian hre mi leh Pathian mi hriat a ni a; chuvângin, Pathian chuan zâwlnei Nathana tîrin a sual chu a hriattîr a, a sim theih nân a thunun/hrem a, chuta Davida simna hla (Sam 51) te hi a va mawi êm! Ringtute hi sualah kan tlu fo, sual pakhat hian sual dang a hring chhâwng duh khawp mai; chuvângin, a rang thei ang bera kan sima Lalpa hnêna kan lêt leh theih nân thununna kan mamawh thîn.

Hei hi kohhranin thununna kan lek chhan pawh a ni. Tin, sual hi kan ngaihzam mai chuan a huangtau telh telh ang a, kohhran nun a  awp lutuk thei bawk. Chuv ngin, sual hi v n a ngai a, chumi v nna hmanrua chu thununna hi a ni bawk.

Thil tisual tam tak hrem loh palh aiin thil ti sual lo tl m t  hrem palh hi a hlauhawm z wk an ti th n. Kohhran thununna hi sual hremna ni ber lo mah se thununna lekkawh kawngah hian kohhran a fimkhur hle. A chiang chinah thununna kan lek hr m hr m th n. Sual th nkhat hi z p a har hle. Mi an rai luah tawh chuan thup theih a ni lo, v ntl ng hriata thil thleng a nih pawhin thup theih a ni lo. Sual th nkhat erawh chu ringhlel mah ila a fiahna hmuh a har hle. Chuv ngin, anmahni pawhin an pawm thlap emaw thup rual lohva chiang chinah hian thununna hi kan lek emaw tih mai t r a ni. Kohhran hrang hrang (tualchh ng kohhran) kal d n pawh a inang thlip thlip l m lo thei e. F r deuh leh f r lo deuh pawh a awm theih.

Thil tisualte man chhuaha hrem kawngah Lal Isua kha a hmanhmawh l m lo. Hemi chungch nga a zirf na hi buh lem tehkhin thua kan hmu (Mt 13: 24-30). Lo neitun a lovah buh chi tha a theh a, z nah mi sualin buh lem a lo theh a; tichuan, buh tak leh buh lem chu an  o za ta a. Hnathawktuten buh neitupa hn nah a lem te chu l k mai an d l a; mahse, buh neitupa chuan buh lem an l k pahin a tak an pawt tel palh hlauh ang tih a hlauh av ngin a phal lo. Buh seng hma chu lo  o za sela buhseng hunah buh lem chu h l mai t r a ti.

Kohhran thunna lek chungch ngah pawh hian Matthaia 18: 15-20-a Lal Isuan unau thil tisual chung a awm d n t r min zirf r hi a pawimawh viau  wm e. Miin kan chung a thil an tihsual chuan a hmasa berah tu ma hriat lohva zilh phawt t r. Kan chung a thil tisual chu a chiang duh fu  wm e, ka pawisa ru sela, a hre chiangtu leh a tuartu chu keimah ngei ka ni ang. Chutiang thilah chuan a sim theihna t rin a timualpho z wng leh hremna lek z wng ni lovin tu ma hriat ve lohva zilh



phawt tûr a ni. Chumi chu a sâwt lo a nih chuan hriatpuitu neia a sualna chu hrih leh tûr a ni, chu chu a la sâwt loh fo chuan kohhranah thlen tûr, chu pawh chu a la sâwt loh fo chuan ‘I tân jentail leh chhiaikhawntu ang ni rawh se’ tih a ni.

He laia Isuan min zirtîr a tum chu miin thil a tihsual pawhin theihtâwpa chhan chhuah hmasak tum tûr a ni. Ringtute zîngah ngei pawh hian suala lo tlu tâwkte an awm a, chûng mite laka kan rilru tûr chu hremna ni lovin hmangaihna leh lainatna nêna kawng dik zawhtîr leh a ni tûr a ni. Mi an tihsual leh sual loh hriat tuma hmanhlel tûr emaw, an lo tisual a nih pawhin hrem châka man chhuah tuma bei bei tûr emaw kan ni hran lo. Amaherawhchu, sualin mi a tihchhiat theih nasatzia hriaa sualin a hliamte damna kawng zawhtîr tûra hmanhlel leh thanemngai tûr kan ni.

Sual hi natna ang a ni a, hriat chhuah vata, a enkawl dân tûr dik taka enkawl chuan a dam hma. Natna thenkhat chu mi dangin an kai loh nân invên a tûl tîh. Sual pawh hi sual a ni tih hriat chhuaha, a pun nasat hmaa tihdam a t̄ha ber. Damlo chu damdawi inah kan kalpui a, damdawi lam thiamten eng vânga na pawh ni se an lo enkawl a, a nat dân azir zêla damdawi leh enkawl na danga an lo enkawl ang hian sualin a tihnatte tâna damdawi in ni tûrin kohhran hi a ding a ni.

Isua kha tidamtu a ni a, kohhrana rawngbâwtute pawh tidamtu an lo ti tîh. Isua tihdamna hna thawh chhunzawma a rawngbâwtuten tihdamna an thawhna hmun chu kohhran a ni a; chuvângin, kohhran hi damdawi in; taksa, rilru leh thlarau lam natna vei chi hrang hrangte tâna damna hmun a ni.

### SYNOD HELPLINE

Synod Helpline No. 9862374232 ni tîh chu hotu lam inthlâk avângin 9436142643 hman tawh zâwk tûr a ni.

## KOHRAN PAWIMAWHNA

- *Upa Vânlalzuaia  
Hlimen*

He leia kan awm chhûng hian mihringte hi mahni duh dâna tâl mai lova kan awm khâwm a, Lalpa thu kan âwihna tûrin kohhran hi a pawimawh a ni. Kan Pathian hian min hre Chiang a, a siam mihringte hi awm dân te, nun dân te, tih tûr leh tih loh tûr te kan hriata, kan dam chhûnga kan chên hova, a rawng kan bâwl tân dial dial theih nân kohhran min dinsak hi a thil tum a ni. Kohhran hian Pathian rilruah hmun a nei thûk êm êm a ni.

Mihring a siam tîr aţang khân kohhran din a tumzia a lang a ni. Adama a siam a, amah maia awm chu  a a ti lo va, “A kawppui âwm mi ka siamsak teh ang,” a ti a. Adama chu a muthilht r a, a n kruh a la chhuak a, Evi a siam tih Genesis 2-ah kan hmu a. Adama muh l chuan Adama hnuhn ng Krista thihna a ent r a, Adama n ktuk aţanga a nupui t r Evi a siam chuan Krista thihna taksa leh thisen aţanga mihring thar Isua nupui t r kohhran din hi Pathian remruat a lo ni a; chuv ngin, kan Pathian chatuan rilruah a kohhran hi a ngai pawimawh a, a duh ang takin a din a. Keini, a mihring siamte pawh hian kan dam chh ngin kan ngai pawimawh z l t r a ni.

### **Kohhran pawimawhnate**

1. Mi Hausa leh retheite awm

kh wm n n a pawimawh a ni. Kohhran din t r pawhin hmeithai rethei leh mi hausate awm kh wmna a ni.

2. Lehkha thiam leh thiam lo, mi fing leh mi m wlte awm

kh wm n n a pawimawh a ni.

3. Min vawng thianghlimtu at n a pawimawh a ni.

4. Piangthar loten piantharna an chan n n a pawimawh, harhna la chang loten harhna an chan n n a pawimawh bawk.

5. Piangtharte  han len z l n n a pawimawh. Ringtuten puitlinna kawng an zawh z l n n a pawimawh.

6. Amah chibai kan b ka, kan faka, kan chawimawiho theih n n a pawimawh a ni.

7. Thlarau lama intihs wt tawn n n te, amah fak leh chawimawia a huhova lungruak tak leh inhmangaih t ng taka

rawng kan bâwl ho nân a pawimawh.

8. Chanchin Ṭha hril darhtu atân a pawimawh. Mi mal chu kan theihna a tlêm a, a huhova kan tanrual hian kan chak avângin kohhran hi a pawimawh a ni.

Tûnlaiah mi thenkhat chu kohhranah tui lovin tuipui tûr an zawng kual a, kohhran sawi chhiai an chhuahsan a, Pathian pawî an khawih a ni tih inhre lovin an duh dânin an vâk vêl a ni. Isuan kohhran hi chhuahsan atân a din a ni lo, sawi chhiat atân a din a ni hek lo. A chatuan roluahpuia, kumkhuaa awmpui tûra a din a ni zâwk.

### **Pathianin kohhran a ngaih pawimawhna chhante**

1. Ama tâna a ruahman a, a bîk taka din a nih avângin a ngai pawimawh a ni. Khawvêla pâwl dang chu mihring ruahmanaa din vek a ni.

2. A chênna tûra a din bîk a ni (1 Kor 3:16). Chên nân in ropui lehin nuama thlang lo. Kohhranho hi a chênna kan nih avângin kan awm dân, kan nun dân te hi fimkhur ila, a in thianghlim ni zêl tûrin i inbuatsaih ang u.

3. A taksa, a chêt chhuahna atâna din a ni (Eph 1:23).

Kohhran tiduhdahtu chuan Isua a tiduhdah a ni mai. Saula hnênah pawh, “I tiduhdah Isua ka ni,” a ti a nih kha (Tirh 9:3-5). Kohhran ngainêptu chuan Isua taksa a ngainêp a ni mai. Chuvângin, inngaitlâwm tak leh thahnemngai taka tel mai tûr a ni.

4. Mitthi khaw kulh kawngkhâr ngam loh tûra din a ni. Vânram chabi kawltu a ni baw. Khawvêla pâwl dangte chu thihnain a ngam vek, ram ropui leh pâwl ropui a ral tam tawh. Kohhran chu Rom lalten tihboral an tum pawhin a ral thei lo, a darh zau ting mai a ni. Vânram luh theihna chabi Chanchin Ṭha kawltu a ni baw, a pawimawh êm êm a ni.

5. A chhûngkua atâna a din bîk a nih avângin a ngai pawimawh a ni (Eph 2:19). Kohhran Pathian chhûngkua leh vân chhûngkua hi Kristaah chuan pumkhat kan ni. Israel-te kha Pathian chhûngkua an nih angin kohhran, Israel tharte hi Pathian chhûngkaw thar kan ni. “Nangni chauh hi khawvêla chhûngkua zawng zawnga ka hriat in ni a...” (Amos 3:2) a ti.

6. Thisena a lei bîk a ni a, a ngai pawimawh a ni (Tirh 20:28).

Khawvêlah pâwl ropui tak tak a awm, thisena lei a nei lo. Kohhran chu thisena a lei bik a ni a, Angelte thu thisena a lei an ni lo, kohhran ho rawngbâwltu tûr an ni zâwk a ni. Chuvângin, kohhran chu a ropuia, hmangaihna thinlung nêh rawngbâwl zêl tûra inbuatsaih tûr a ni.

7. Krista mo, a nupui hual bik a ni a, a ngai pawimawh a ni (Hos 2:19; Thup 21:2). Paulan pasal pakhat ka hualsak si che u a (2

Kor 11:2) a ti. Kohhranhote chu Krista mo kan ni a, kan pasal chu a takin kan la innei dâwn, ropui takin vân leh khawvêl hriat tûrin mo hruaitu a lo kal ang a, mote vân khawpuiah min lâwm lût dâwn a ni. A lawm luh tlâk kan nih theih nân felna, thianghlimna, thatna, dikna silhfênin lo inthuum zêl ila, vân kohhran neituin lei kohhran a ngaih pawimawhte a hnênah chatuanin min la chêtûr dâwn a ni.

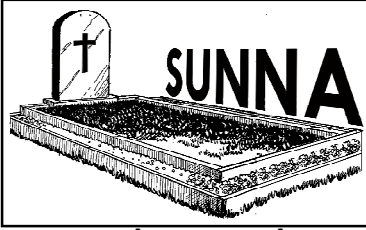
### YOGA LAKA FÎMKHUR TÛRA NGENNA

Synod Executive Committee chuan Yoga chungchânga hma lâk thar rawtna a dawnte ngun takin a ngaihtuah a. Mizoram Kohhran Hruaitute Committee (MKHC)-in '**Yoga chungchânga Kohhran mipuite hriattîrna**' a tihchhuah thar chu kohhranin an lo bawh zui theih nâna thawn chhuah tûrin a rêl a (SEC 263:64).

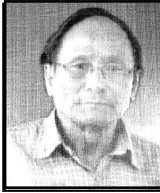
Kohhran mite chu sakhaw dang thiltih laka fîmkhur tûrin kan inngên a, a hnuuia MKHC-in Yoga chungchâng a sawite hi ngai pawimawh tûrin kan inchah a ni:

1. *Yoga hi Hindu philosophy-a innghat tlat a nih avângin tih-Kristian theihah kan ngai lo.*
2. *Yoga hmanga damna an sawi hian taksa damna chu eng emaw chen a thlen ve a ni mai thei a; mahse, damna tluantling, Isua Krista aţanga damna ang tak tak hi a thlen ve lo.*
3. *Yoga hi zawi tê têa Kristiante chîm ral tumna leh sakhaw danga inlehtîrna tûra mi thinlung chhum hmin tumna hmanraw hlauhawm tak niah kan ngai a; chuvângin, kohhran mipui zawng zawngte lo invêng fîmkhur tûrin kan inngên a ni.*

Sd/- Upa H. Ronghâka  
Secretary, Mizoram Synod



**UPA ZÂWLROLÛTA  
VAIRÊNGTE**



Upa Zâwlrolûta (73), Vunga leh Hauzahniangi te fapa hi kum 1942 khân a lo piang a. Kum 1963-ah Lalmalsâwmi nêan innei a, fa pariat an nei.

Kum 1985-ah Tual Upa atân thlan a ni a, kum 1986-ah Kohhran Upa atân thlan a ni leh a, hemi kum vêk hian Hmârthlang Presbytery Inkhâwmpuiin Vairêngte Kohhran Upa atân a nemnghet a. Kohhranah chanvo pawimawh tak tak a chelh tawh a ni.

Kum 1995 Oct. 30-a Kâwnpui daia Vairêngte bus accident-ah khân an nupain an tel ve a, a hmunah a nupui hi a boral ngêl a, amah pawh a luah hliam na tak a tuar a, nikhaw hre lovin rei tak a awm a. He a

accident-na avâng hian a hriatna a hloh va, ÷awng thei lovin a awm zui bawk.

June 14, 2015 Pathianni zân a inkhâwm chu a ÷awngtai laiin nikhaw hre lovin a tlu thut a, damdawi in panpui tum mêk a nih laiin Lalpa hnênah min kalsan ta a ni. A tûkah amah thlahna hun in lamah Bialtu Pastor Lalmakpuian a hmang a, Biak Inah Upa B. Vânrammawia, Hmârthlang Presbytery Moderator-in a vui leh a, Kohhran Zai-pâwl te, Presbytery huam chhûng Pastor, Pro. Pastor leh Kohhran Upa ÷ahnem tak nêan ui takin kan thlah liam ta a ni.

*- Upa C. Lalnunpuia  
Vairêngte Kohhran Ziaktu*

**UPA C. CHAWNGHNÛNA  
SAIRÂNG**



Upa C. Chawnghnûna (74), Pu Ch. Sêlchhûnga (L) leh Pi Thanziki (L) te fapa hi ni 1.2.1941 khân Champhaiah a lo piang a. Ni 23.5.1967-ah K.

Thanmawii nêñ an innei a, fa panga an nei.

Shillong-ah Defence & Account Dept. Auditors hna hun rei tak a thawk a. Kum 1974-ah Shillong aṭangin Sairângah a pêm a, Sairâng High School Headmaster hna a pension thlengin a thawk a ni.

Kum 1983-ah Chhimthlang Presbytery Inkhâwmpuiin Sairâng Kohhran Upa atân a nemnghet a. Rawngbâwl na pawimawh tak tak – Synod Executive Committee Member, Pastoral Committee, Ramthar Committee, Sunday School Committee leh Education Board-ah te Member a lo ni tawh. Tin, Presbytery Moderator leh Secretary a ni tawh bawk.

Tualchhông Kohhranah Secretary, SS Suptd., Building Committee Chairman leh Ramthar Committee Chairman a ni tawh a; Bial Chairman leh Treasurer rawngbâwl hna a lo chelh tawh bawk.

Kum 2015 Tlawng Presbytery Inkhâwmpui Mamiit Kohhrana neihah kal ngei tumin

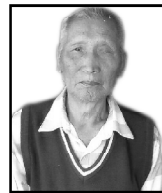
a inbuatsaih a; mahse, ni 4.10.2015 (Pathianni) zânah a chau thut a, a tûkah damdawi in panpui a ni a, thisen cancer a ni tih hmuh chhuah a ni ta a, theih tâwp chhuaha enkawl a nih laiin ni 9.11.2015 khân Lalpa hnênah min chawhlsan ta a ni.

A tûkah amah thlahna hun in lamah Upa J. Vânlalruatan a hmang a, Biak Inah Bialtu Pastor Lalbiakchhônga Pachhuau-in a vui leh a, Tlawng Presbytery leh Bial chhông Upa te, Kohhran Zaipâwl leh Bial Zaipâwlte nêñ kohhran mipuiten ui takin kan thlah liam ta a ni.

*Upa Zosângzuala  
Sairâng Kohhran Ziaktu*

---

**UPA LALNAA  
SIHPHÎR**



Upa Lalnaa (90), Thênphunga leh Saichhôngi te fapa hi October 14, 1925 khân Thênzâwl khuaah a piang a. July 1949-ah Lalngêngi Sailo nêñ an innei a, fa 10 an nei. Kum 1955-

ah Thênzâwl aţangin Sihphîrah a pêm a, Primary School zirtîrtu a ni a, kum 42 zet a thawh hnuah Head Teacher-in a pension a ni.

Kum 20 mi a nihin Tualchhông Upaah thlan a ni a, kum 14 chhông Tual Upa nihna a chelh. Kum 1959-ah Hmârthlang Presbytery Inkhâwmpuiin Sihphîr Kohhran Upa atân a nemnghet a. Kohhranah chanvo hrang hrang a chelh. Kum 29 chhông Secretary hna a chelh a, SS Suptd., tum li a ni bawk. Bialah Chairman leh chanvo hrang hrang a chelh tawh. Kum 2009 khân kum 50 Upa a nih lawmpuina Certificate, Sakawrhmuítuai Presbytery-in a hlân. Ramthim vei mi a ni a, wavi tam tak hunpui hmangin ramthim lamah a kal thîn a, a pension hnuin Cachar lamah kum hnih missionary-in an nupain an kal nghe nghe.

Mi hrisêl tak a ni thîn a, kum 2005 Chanchin Tha Thlen Ni zîng ţawngţai aţangin thisen sâng avângin a chau ţan a. Kum 2006 aţangin a mit a ţha lo zui a, a rawngbâwlna pawh a chhunzawm thei ta meuh lo va.

Kum 2015 kum tîr lamah chesualin a bawp a tipelh a, heta ţang hian a bawksawp ta a ni. A tu leh faten duat taka an enkawl laiin ni 15.11.2015 khân Lalpa hnênah min kalsan ta.

A tûkah amah thlahna hun in lamah Bialtu Pastor H. Laltlanthangan a hmang a, Biak Inah Rev. J. lalremsiama, Aizâwl Hmâr Presbytery Moderator-in a vui leh a, Kohhran Zaipâwl te, Presbytery chhông Upa leh kohhran mipuiten ui takin kan thlah liam ta a ni.

*- Upa HS Lalhlimpuia  
Sihphîr Kohhran Ziaktu*

## **UPA F. LALRAMMAWIA KHAWBUNG**



Upa F. Lalrammawia (65), Upa Lalchhana leh Pi Kâpchhani te fapa hi kum 1950 March ni 3 khân Zâwlsei khuaah a piang a. Ram buai avângin Khawbungah sawi khâwm a ni a, a awm hlen ta a ni. Kum 1974-ah Lalvuli nêan innei a, fa pali an nei.

Kum 1992-ah Tual Upaa thlan a ni a, kum 2003-ah Upa atân thlan a ni leh a, hemi kum vêk hian Tuipuirâl Presbytery Inkhâwmpuiin Khawbung Kohhran Upa atân a nemnghet a. Kohhranah rawngbâwl na pawimawh hrang hrang a chelh.

Solfa thiam tak, kohhrana zai hruaitu hlun a ni. Mi dangte tâna inpe peih mi leh harsatna tâwkte pawhin an pan ber thîn a ni a. Hlim lâмна ngaina mi leh kohhrana mi hlate hnûk hnai zâwnga rawngbâwl thîn a ni a, mite ngainat a hlawh hle.

Sciatica natnain a tlâk buak a, kum 2015 tâwp lamah chuap natnain a tlâk buak leh a, theihtâwpa enkawl a nih laiin 8.12.2015 khân Lalpa hnênah min kalsan ta a ni.

A tûkah amah thlahna hun in lama hman a nih hnuah Biak Inah Upa Saichuana, Kohhran Chairman-in a vui leh a, Bial chhûng Kohhran Upa te, Kohhran Zaipâwl leh kohhran mipui thahnem takin ui takin kan thlah liam ta a ni.

- *Upa B. Lalzârliana*  
*Khawbung Kohhran Ziaktu*

## UPA K. RONGHÂKA NEW CHAMPHAI

Upa K. Ronghâka (78), Kâpchhuma leh Ngênhnûni te fapa hi April 4, 1937-ah Tualchêng khuaah a piang a. Kum 1950-ah Thingkângphai (Manipur)-ah an pêm a. Dt. 9.6.1955-ah K. Biakmawii nêan innei a, fa pasarih an nei. Kum 1983-ah Lamka (Manipur)-ah an pêm leh a, kum 1987-ah New Champhaiah a rawn pêm a, a awm hlen ta a ni.

Kum 1987-a New Champhaia a lo pêm hian Presbyterian Kohhran dintute zînga mi a ni a, kum 1988-ah Tual Upaa thlan a ni a, kum 1991-ah Kohhran Upa atân thlan a ni leh a, hemi kum vêk hian Khawchhak Presbytery Inkhâwmpuiin New Champhai Kohhran Upa atân a nemnghet a. Tualchhûng Kohhranah committee pêng hrang hrang Chairman a ni tawh a, Bial Standing Committee leh Nomination Committee-ah a tel a, Presbytery Standing Committee-ah a tel tawh bawk.

Kum 2007 aţangin a insawisêl ţan a, a ke hmâwr



aṭangin che hlei thei lovin a awm a, stroke a ni tih hmuh chhuah a ni a. That lam a pan tak tak thei lo va, natna dangin a tlâk buak zêl avângin 10.12.2015 khân Lalpa hnênah min kalsan ta a ni.

Synod Inkhâwmpui lai a nih avângin Bialtu Pastor leh Presbytery Moderator an awm loh avângin hemi vêk hian amah thlahna hun in lamah Upa R. Hrângkaian a hmang a, Biak Inah Upa T. Lalhriatpuia, Kohhran Secretary-in a vui leh a, Bial Zaipâwl leh Kohhran Zaipâwlin thlahna hla an sa a, kohhran mipuiten ui takin kan thlah liam ta a ni.

- *Upa T. Lalhriatpuia*  
*New Champhai Koh. Ziaktu*

---

## UPA KK DAIA RAMHLUN VÊNGLAI



Upa KK Daia (82) hi July 1, 1933 khân Mîmbungah a piang a, kum 1958-ah Khâwlthangpuii nêan an innei a, fa pasarih an nei.

Kum 1996-ah Tuiṭhaphai Presbytery (Manipur) chuan Lamka Kohhran Upa atân a nemnghet a, kum 1997-ah Ramhlun Vênglaiah an rawn pêm a ni.

Kum 1956-ah sipaiah a ṭang a, Parachute Regiment a ni a, kum 1958-ah midical-in a pension. A pension hnuah Hindi Teacher hna a thawk leh a ni. Talent a nei ṭha hle a, zai, music leh hla phuah a thiam a, hla 40 chuang Mizo ṭawng leh Paite ṭawngin a phuah a ni. Paite ṭawnga a hla phuah phei hi chu Paihte zirlai bu (Elementary-University)-ah zir a ni.

Amah hi ṭawngṭai mi a ni a, a rawngbâwlpuite an hming lamin a ṭawngṭaisak vek ṭhîn. Thusawi nân ṭawng chi li a thiam a, hnam dang unaute zînga rawngbâwlnaah a sûlsutu ber a ni nghe nghe.

Kum 2015 kum tîr lamah a insawisêl ṭan a, chuap cancer a ni tih hmuh chhuah a ni a, theihtâwpa enkawl a nih laiin 11.12.2015 khân Lalpa hnênah min kalsan ta a ni.

- *Upa Laldingliana Sailo*  
*Ramhlun Vênglai Koh. Ziaktu*

## UPA LALHLIMPUIA BAKTÂWNG



Upa Lalhlimpuia (80), Pu Kâpliana leh Pi Ṭhuamliani (Bible Woman) te fapa hi September 21, 1935-ah Baktâwng khuaah a piang a. Kum 1961-ah Sângthangi nêan an innei a, fa 10 an nei.

Kum 1969-ah Tual Upa atân thlan a ni a, 1971-ah Chhimchhak Presbytery Inkhâwmpuiin Baktâwng Kohhran Upa atân a nemnghet a. Kohhranah chanvo hrang hrang – Building, Ramthar, Sunday School leh Social Front Committee-ah te Chairman a ni tawh a. Bialah Chairman, Secretary, Standing Committee, Nomination Committee leh SS Committee-ah te a tel tawh bawk.

Presbytery-ah Treasurer, Standing leh Nomination Committee, Sub-Pastoral-ah te

a awm tawh a, Synod-ah Mission Board leh SEC-ah te member a ni tawh bawk. Tin, MSSU chawimawina Diploma leh Jubilee Award a dawng tawh a, Bible Society-ah Life member a ni bawk. Inneihna kawltu term thum a chelh a, tuak 41 a inneihtîr.

Kum 2015 February thla aţang khân a insawisêl ţan a, doctor a râwn hnuah chibâwm cancer a ni tih hmuh chhuah a ni a. Zaia enkawl a ni a, a natna hian a lo thlen thui tawh avângin ţhat lam a pan hlei thei lo va, ni 21.12.2015 khân Lalpa hnênah min kalsan ta a ni.

Hemi ni vêk hian amah thlahna hun in lamah Bialtu Pastor Lalrinsângan a hmang a, Biak Inah Pastor H. Lalbiakhluna, Ṭawi Presbytery Moderator-in a vui leh a. Kohhran Zaipâwl te, Presbytery chhûng Pastor, Pro. Pastor, Upa leh kohhran mipui ṭhahnem takin ui takin kan thlah liam ta a ni,

- *Upa Lalnêlawma  
Bâktâwng Vênglai Kohhran  
Ziaktu*

## SYNOD BOOKROOM LEHKHABU THAR

► **Khawngaihna & Khawngaihna min thlah lotu:** C. January chuan a pasal thihna avânga ‘Khawngaihna’ tih bu a chhuah hnuin chu khawngaihna bawk chu amah thlah lotu a la nih zêl dân ama tawnhriat ngei hmangin a rawn târ lang leh ta. Thimin êng ênzia a târ lang a, sakei huai hmaah pasaltha an hriat thîn. Chutiang bawkin a pasal Rev. Dr. Vânlalthlana thihna leh a nupui C. Januari tuarna khirhkhân leh thihna chuan tute nge an nih a rawn puang chhuak ta. A man ₹120 ve ve.

► **Thil mak chhui sên loh:** Mizoram mai bâkah ram pâwn thlenga tihdam rawngbâwl hmun hrang hranga lo nei tawh B. Lalremtluangi chuan Pathianin amah kaltlanga thil mak chhui sên loh a tihte chu ziakin a rawn dah khâwm a. Mi tinin kan hmuh ve phâk piah lama mita hmutu, kuta khawihtu amah ngeiin a puan chhuahna hi a ropui a, a mak a, mi a hneh bawk. A man ₹300.

► **A lai bu:** A hming ringawt aţang pawha lehkhabu lunglenthlâk, Mizote thuziaka bul min ţanpuia min tiţhang liantu, rei tak hmuh tûr awm si lo kha C. Laizâwna thahnemngaihna avângin hmuh tûr a awm leh ta. A man ₹50

► **Mizo inneih, inthen leh roluah dân:** Mizoram sawrkâr chuan Mizo inneih, inthen leh roluah dân thar a tichhuak a. Bookroom dâwr zawng zawngah ₹10 chauha lei theihin dah chhuah a ni. Mi pakhatin copy nga aia tam vawi khatah lei phal a ni lo nghe nghe.

► **Mi rothapte rammutna:** Rangkachak leh lungflu tam elkhên, kum tam tak kal ta aţanga miten an lo inchuh tawh, nunna leh thisen tam tak luan ralna, mahni nunna thâpa an lo zawn thîn, thing kûng lian tak kianga thuh rûk, Lushai Hills ngaw chhah tak kâra awm la tûra mi rothapte rammutna chanchin hi hnam dang lehkhabute lakah pawh theuneu lo tak a ni. Dr. Robert L. Khawlhring MD leh H. Lalfakzuala te ziah ₹200 man a ni e.

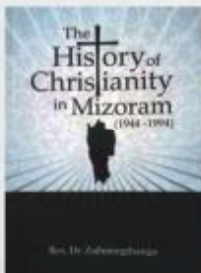
► **Battle Cry:** Khawvêl lehkhabu hmingthang ber ber; Exodus, Trinity, Armageddon etc. ziaktu Leon Uris lehkhabute zînga ngaihnamw berte zînga sawi thîn Battle Cry chu James Lianmawia khan a letling a. Lehkhabu tha kan neih belh leh ta. A man ₹250

To,



**Ezra, Nehemia, Estheri hrilhfiahna:** Mizoram Gospel Centenary lawmnain thil tha a nghawng chhuah tam tak zînga tûn thlienga kan la chhawng chu Bible hrilhfiahna, Mizo jawng ngeia nei kim tûra hma lâkna hi a ni. Chumi atân chuan Thuthlung Hlui hrilhfiahna Volume 14-na peih fel a lo ni ta a. He volume, Dr. T. Vânlaltani ziahah hian Ezra, Nehemia leh Estheri hrilhfiahna-te khung khâwm a ni a. Mizo jawnga Bible hrialhfiahna kan neih belh leh ta. A man ₹ 150.

**Thupuan Hrilhfiahna:** Mizo Kristiante puipa hmasate zînga mi Rev. Liangkhaia khân lehkhabu ropui leh chhawrnahawm tak tak 25 chuang a lo ziak a. Chûng a lehkhabu hmasa, hmuh tûr awm tawh mang lote chu a pian champha wawi 125-na pualin chhut thar leh a ni hlawm a. Lehkhabu hlu leh ro tling kan neih belh leh ta. A man ₹ 200.



**The History of Christianity in Mizoram 1944-1994:** Synod Moderator leh Executive Secretary lo ni tawh Rev. Dr. Zaihmingthanga chuan kum 50 chhûng, 1944-1994-a Mizoram Kristiante dinhmun chu chiang tak leh fiah takin a chhui a. Hun a kal zêl ang a, he lehkhabu hi chu a la hlu tial ang. A man ₹ 200.

Published by Rev. Dr. C. Chawngmingliana at Aizawl, Mizoram on behalf of MIZORAM PRESBYTERIAN CHURCH. Typeset by SL & PB and Printed at the Synod Press, Aizawl - 796 001, Mizoram.

Copies - 37,500