

DECEMBER 2016

# Kristian Tlangau



CHHUAH TAN KUM - OCTOBER 1911



Lal pianna Bethlehem an thleng lo

- Harhna dik
- Krismas chungchânga zawhnate
- Zawh tûr kawng chhût ngun

Editorial • Mizoram Synod • Lâwrkhâwm • Zawhna Ieh Chhâna

**Kum 106-na**

**December 2016**

**Bu 1,251-na**

**Editor** : Rev. Dr. C. Chawngmngliana Ph. 2316411(R)  
**Joint Editors** : Rev. P.C. Pachhûnga  
Upa H. Ronghâka  
Upa Prof. R.L. Thanmawia  
Rev. P.B. Mankima  
**Business Manager** : Upa C. Lalbiaktluanga  
Synod Office, First Floor  
Mission Vêng, Aizâwl – 796 001  
**Office Phone 2324590**; e-mail: kristiantlangau@yahoo.co.in

**Kum khat lâk man : Rs. 50.00**

A man pe leh a bu la duh chuan Business Manager, Synod Office First Floor, Mission Vêng, Aizâwl hriattîr tûr.

Thu chhuahte hi Editor ngaih dân a ni vek kher lo.

## **A CHHÛNGA THU AWMTE**

1. Editorial	1
2. Mizoram Synod	2
3. Lâwrkhâwm	8
4. Zawnha leh Chhâna	12
5. <b>Sermon:</b> (1) Lal pianna Bethlehem an thleng lo	17
(2) Harhna dik	21
6. Krismas chungchânga zawnhate	27
7. Zawh tûr kawng chhût ngun	32
8. CWM General Assembly	36
9. Sûnna	42

### **Synod Puipate**

Moderator : Rev. H. Lalrinmawia  
Secretaries : Upa H. Ronghâka (Sr.)  
Rev. Lianhmingthanga Sailo (Jr.)  
Finance Officers : Rev. P.C. Pachhûnga  
Rev. H. Remthanga  
Statistician : Rev. R. Lalchangliana  
Sr. Executive Secretary : Rev. Lalramliana Pachuau  
Executive Secretary : Rev. B. Sângthanga

**The Organ of the Presbyterian Church, Mizoram**



## Editorial

### THLARAU TÂN CHAWLHNA

Mari, Marthi, leh Lazara te unau hi Bethani khuua awm an ni. An inah Lal Isua a thlengin a eiin a in thîn. Tum khat chu Isua leh a zirtîrte an zin pahin Marthi te inah an thleng leh a. Marthi chu ei rawng bâwlin a buai hle a. Chutih lai chuan Mari erawh chu Isua ke bulah thuin thu a ngaithla kauh kauh a. Marthi thinin a tuar ta lo va, Isua hnênah chuan a laizâwn Mari chu rawngbâwl ve tûra hrilh tûrin a ti a. Isua erawh chuan, “Marthi, Marthi, thil tam tak i ngaihtuaha i buai a nih hi. Thil pakhat chauh a pawimawh e. Marin chan tha chu a thlang a, chu chu i lâksak tûr a ni lo,” a tihsan ta daih a.

Thil pakhat chauh pawimawh chu eng nge ni ta ang? Isua hian a sawi râwt si lo. Mahse, ‘Marin chan tha chu a thlang a, i lâksak tûr a ni lo’ a tih hian Isua sawi tum chu a târ lang âwm e. Thil pahnih zir tûr a awm:

Pakhatnaah chuan he thawnthuah hian Marthi chanchin tha lam hian sawi a hlawh lo hle. Mi dangte tâna inpe phal tak a ni. Mikhual a thleng a, ei tûr a buatsaihsak a, nuam taka chêtîr a duh. Mi dang mamawh phuhrûksak duh mi a ni.

Pahnihnaah chuan Isua ngaih pawimawh ber kan hmu - mihringin thil pawimawh kan tih zawng zawng aiin Isuan Pathian thu a ngai pawimawh. Chu chu Marin a chang tlat. A ram leh a felna zawng hmasa îla, kan thlarau tân chawlhna kan hmu ang.



*- Executive Secretary  
i/c Publicity, etc.*

### 1. Chhawmdâwlna pe

Tûn hnaia harsatna hrang hrang tâwk mi chi hrang hrang - khawsak harsa, damlo ãnpui ngai, vânduaina tâwk, savawm seh, in kâng leh thing tla chhûngkaw 21 hnênah Synod Relief Fund ațangin chhawm-dâwlna ₹96,000 pêk a ni.

### 2. Zin

♦ October 13-14, 2016 khân Churachandpur-ah Manipur Area Committee hmangin Rev. H. Lalrinmawia, Moderator, Upa H. Ronghâka, Synod Secretary, Rev. Lalramliana Pachuau, Sr. Exe. Secretary, Rev. R. Lalnuntluanga, Rev. Lalchhuanawma, Upa C. Thansiam, Upa Lalramthanga leh Upa R. Vânlalduha, Committee Member te an kal.

♦ October 15-16, 2016 khân Cachar Tlângram Presbytery hmangin Rev. B. Sângthanga, Exe. Secretary a kal.

### 3. MTC Farewell cum Graduation

Oct. 3, 2016 khan 13th batch Short Course Missionary Trainees, Farewell cum Graduation, MTC Chapel-ah neih a ni a. Rev. Dr. K. Lalrinkima, Principal-in inkhâwm a kaihruai a, Rev. B. Sângthanga, Executive Secretary in certificate hlan leh thusawina hun a hmang.

### 4. SMTC

October 4, 2016 khân Synod Multipurpose Training Centre (SMTC) chuan an din champha kum 20-na pualin Blood Donation Camp an buatsaih a. Synod Hospital, Durtlânga damlo mamawhte tân thisen unit 16 an pe. SMTC hian kum dangah pawh Synod Hospital tân thisen an lo pe tawh thîn a ni.

### 5. MSSU

♦ October 11, 2016 khân Dâwrpui Kohhran VBS hmanpuiin Pu John Lalhrui-tluanga, Asst. Co-ordinator leh

Upa Lalrosânga Colney, Office Assistant te an kal.

◆ October 29-30, 2016 khân Noagang Bial Zirtirtu Training neihpuiin Upa Lalṭhahluna Ralte, Asst. Coordinator leh Upa S. Kâpzathanga te an kal.

### 6. Worship Dept.

October 11-14, 2016 khân Damparêngpui Bialah Solfa Camp neihpuiin Pu Lalromawia, Senior Instructor leh Tv. Laldusânga te an kal.

### 7. Education

◆ October 11, 2016 khân PES, Northern Area Sports hmanpuiin Khawruhlianah Upa DP Biakkhûma, Supervisor of Schools a kal.

◆ October 30, 2016 khân PES, Zemabâwk School Day hmanpuiin Upa DP Biakkhûma a kal.

### 8. KṬP

◆ October 13-15, 2016 khân Mamit Bial Evangelical Seminar/Training neihpuiin Pu PC Biakmuanpuia, Asst. Secretary leh NI. Lalfamkimi, Comt. member te an kal.

◆ October 14-15, 2016 khân East Phailêng Branch Diamond

Jubilee lawmna hmanpuiin Tv. Joseph Lalsângzuala leh T.Upa PC Lalropuia, Comt member te an kal.

◆ October 15, 2016 khân Airfield Vêngthar Bial Leadership Training neihpuiin Pu F. Lalremruata leh Dr. Lalrotluanga, Comt. member te an kal.

◆ October 17, 2016 khân Vênghnuai Branch Diamond Jubilee lawmna hmanpuiin Rev. Zothansânga, CKṬP Leader a kal.

◆ October 27-30, 2016 khân East Lungdâr Branch Diamond Jubilee lawmna hmanpuiin T.Upa Ngûrhmingliana, Asst Leader leh T.Upa Zomuana Râlte, Comt. Member te an kal.

◆ October 29, 2016 khân Zuangtui Branch Leadership Training neihpuiin Dr. David C. Vânlalfakawma leh NI. Lalfamkimi, Comt. Member te an kal.

◆ October 29, 2016 khân Madanrtng Branch Diamond Jubilee lawmnaah Rev. B. Sângthanga, Exe. Secretary-in hun a hmang.

**9. Trust Dept.**

October 12-13, 2016 khân Champhai Vêngthlang Pastor Quarters ram en fiahin T.Upa Thangliankhûma, A.E. a kal.

**10. Campus Ministry**

October 14, 2016 khân Blue Star Academy, Bâwngkâwnah hun an hmang a, Oct. 15, 2016 khân Synod Conference Centre-ah Seminar on Atheism tih thupui hmangin hun an hmang a. Chawhma lamah Dr. C. Lalhrekiman ‘Zu leh Ruihhlo chungchâng’ tih thupui hmangin paper a present a, chawhnu lamah Rev. Lalchungnunga, Director, Campus Ministry-in ‘Atheism chungchâng’ tih thupui hmanga paper a present chu zir ho leh a ni. He Seminar hi College hrang hranga zirlaite tâna buatsaih a ni a, Synod Campus Ministry, MEGF leh AICEU ƣang kawpin an buatsaih a ni.

**11. Finance**

October 15-16, 2016 khân Sakawrdai Bial chhûng kohhran hrang hrangah Finance Campaign buatsaih a ni a, hemi hmanpui hian Tv. Zaihming-thanga Fanai, Accountant, Upa

PC Vânlalrova, O/A, T.Upa David Lalnunfela, O/A te an kal.

**12. Kohhran Hmeichhia**

◆ October 13-26, 2016 khân PWF, Good will visit to S. Korea Programme hmangin S. Korea-ah Pi H. Lalpianthangi, General Secretary leh Pi Sailûti, Asst. Secretary te an kal.

◆ October 15-16, 2016 khân Khawhai South Bialah Kristian Chhûngkaw Campaign neihpuiin Pi Tlângmawii, Pi Lalnuntluangi leh Pi Lalbiakhluni, Comt. member te an kal.

◆ October 27-28, 2016 khân Madanrtng Kohhran Golden Jubilee lawmnaah Pi Rinchawii Chairman leh Pi Râllianthangi, Fin. Secretary te an kal.

**13. Social Front**

◆ Synod Social Front leh Champhai Vêngthlang Kohhran ƣang kawpin an buatsaih Aluminium Mistiri Training chu October 14, 2016 khân khâr a ni.

◆ October 21-23, 2016 chhûng khân Chhingehhîp Vêngthlang Kohhranah Intodelh Seminar neihpuiin Dr. Saithantluanga, Resource

Person, Upa Zothanmawia leh Pu Lalremruata, Campaigner te an kal.

#### 14. Mission Board

◆ October 22-23, 2016 khân Kolasib Vênglai Bial Pavalai Meet hmanpuiin Rev. K. Lalrinmawia, Secretary, SMB a kal.

◆ October 24 - Nov. 2, 2016 khân Synod Mission Board hnuaiia Mission Field hrang hrang - Delhi, Lucknow, Siliguri, Nepal, Patna, Jharkhand Field tlawhin BEC member-te hmun hrang hranga inthen darhin an kal.

#### 15. Revival Dept

◆ October 11-16, 2016 khân Synod Revival bul tumin Synod Revival Camping Center, Neihbawihah camping buatsaih a ni a, speaker chu Lalthara, Servant of God a ni. Camp lût zawng zawng hi mipa 53, hmeichhia 6 an vaiin 59 an ni.

◆ October 16, 2016 hman khân Kolasib District-ah District Revival Meet, Kolasib Diakkâwn Biak Inah hman a ni a. Hemi hmanpui hian Upa JH Ramnghinglova, Revival

Committee member leh Pu C. Lalramthara, Revival Speaker te an kal.

◆ October 28-30, 2016 khân Lungleiah District Revival Meet hman a ni a, hemi hmanpui hian Rev. K. Rolungmuana, Director, Synod Revival, Pi C. Vânlalnunziri leh Pi Mahmingi (Mission Veng) te an kal.

◆ October 29-30, 2016 khân District hrang hrang - Saiha, Lawngtlai, Champhai Mamit-ah te District Revival Meet hman a ni a, Oct. 28-30, 2016-ah Lunglei leh Serchhip-ah District Revival Meet hman a ni bawk. He meet hi Revival Committee leh Revival Speaker ten an hmanpui.

#### 16. Board Committee hrang hrang an thu

Synod Inkhâwmpui atâna Synod Department hrang hrangte inruahman lâwkna Committee chu October 17, 2016 ațang khân an thu ța na, hetah hian Department leh Board Committee hrang hrangten Presbytery ațanga thu lût bawh zui ngai leh thu pawimawh dangte an rel hlawm a ni.

### 17. Pastor Nupui intawh khâwm vawi 38-na

October 11, 2016 khân Pi Zaii Hall, Synod Conference Centre-ah Presbyterian Kohhrana Pastor leh Pro. Pastor nupui Intawh khâwm vawi 38-na hman a ni a, Pastor nupui 141 an tel thei. Chawhma lamah ‘Pastor Nupui’ tih thupui hmangin Revd Chuathuaman thuchah a sawi a, chawhnu lamah Pi Lalnilâwmin ‘Dârthlang’ tih thupui hmangin thuchah a sawi bawk. Sawi hona hun hman zui a ni a, tlaiah zanriah an kîl ho nghâl.

### 18. Thawktu thar

Synod Service Board chuan John Williams Hospital, Lungleia Office Assistant hna Contract Basis-a thawk tûrin Lallungmuana s/o B. Lalzârzova, Lunglei Bazar Vêng a la thar.

### 19. Praise On tuang taka zawh a ni

Synfo & Inkspot Digiprint Solutions buatsaih Praise On chu October 28, 2016 zân khân Bungkâwn Kohhran Golden Hall-ah result puana khârna hun hman a ni.

Final-ah hian a tha zual mi 10 thlan chhuahte hla pahnih hmangin an inel leh a. Chuta an result chu hetiang hi a ni:

*Pakhatna:* R. Lalrinmawii, Leitan

*Pahnihna:* Zorinsânga Sailo, Ramhlun North

*Pathumna:* Cindy Lalthanpuui, Tlângnuam

Heng bâkah hian Special Award dawngtute chu:

*Best Performance:* Cindy Lalthanpuui, Tlângnuam

*Most Promising:* Irene Laldingngheti, Tuikual South

*Most Inspirational:* Lalruatfeli, Lunglei Chanmari

*Best Participation:* KṚP, Bûngkâwn Branch (mi 12 an tel).

Praise On-a pakhatna hian ₹80,000 a dawng a, pahnihnain ₹40,000 leh pathumnain ₹20,000 an dawng. Hei bâkah hian Casio keyboard an dawng vek bawk a, citation leh trophy an dawng tel bawk a, an branch te hnênah microphone pêk an ni bawk. Top 10-a lang chinte hian ₹5,000 theuh an dawng. Synfo chuan pakhatna aṭanga pathumnate hi a thlâwnin Music Video a siamsak vek bawk ang.



## 19. Kum 2017 Puitling Sunday School Zirlaibu a chhuak ta

Mizoram Presbyterian Kohhran chuan nakum 2017-a Puitling Sunday School zirlaibu tûr “Thupuan Hrilhfiahna’ Rev. Lalramliana Pachuau ziak chu a peih fel ta a, Synod Bookroom chuan dâwr hrang hrangah lei theihin a chhawp chhuak leh ta. Zirlaibu hi a bung indawta hrilhfiahna leh chhui zauna a nih avângin kum dang zirlaibu angin then hrang a awm lo va, zirlai 47 awmin phêk 285 zeta chhah a ni bawk.

Mizoram Presbyterian Kohhran Puitling Sunday School zirlaibu hi lehkhabu mal khaih chuan chhut tam ber niin copy 80,000 chhut a ni. Mizoram Synod hnuai kohhran zawng zawngte zirlaibu a nih bâkah Presbyterian Church of Myanmar (PCM) hnuai Phai Synod pum pui chuan an zirlaibu atân an hmang ve nghâl zêla. Presbyterian Church of Myanmar leh Mizoram Synod Partnership Agreement angin Mizoram Synod chuan kumtin Copy 1000 zet a thlâwnin Presbyterian Church of Myanmar

hi a pe thîn a ni. Hei mai bâkah hian Myanmar-a Methodist Kohhrante chuan Mizoram Presbyterian Kohhran zirlaibu hi an zirlaibu atân an hmang ve thîn bawk.

## 21. Moderator Programme

Synod Moderator Rev. H. Lalrinmawia chuan hetiang hian hun a hmang:

- ◆ October 6-9, 2016: Champhai ‘S’ Presbytery hmanpui

- ◆ October 13-14, 2016: Manipur Area Committee, Churachandpur

- ◆ October 23, 2016 (Pathianni)

*Chawhnu:* Durtlâng Kohhran (Durtlâng Bial)

*Zân:* Kanan Kohhran (Vaivakâwn Bial)

- ◆ October 29, 2016 (Inrinni)

*Chawhnu:* Sihfa North Biak In hawn

*Zân:* Hmârvêng Kohhran (Saitual Bial)

- ◆ October 30, 2016 (Pathianni)

*Chawhnu:* Vênglai Kohhran (Saitual Bial)

*Chawhnu:* Chhim Vêng Kohhran (Saitual Bial)

*Zân:* Saitual Kohhran



## Isua an zalhna lung khum (limestone bed) hmuh chhuah a ni

Thil hlui lai chhuaktu (archaeologist)-te chuan Old Jerusalem-a Church of the Holy Sepulchre an zir chiannaah chuan Isua Krista a thiha a thawh leh hmaa an zalhna chinai lung khum hmu chhuak niin an insawi a. National Geographic-a mi Fredrik Hiebert chuan, “Min thâwng khawp mai, ka khûp te pawh a khûr hial a ni, hetiang thil hi kan lai chhuak ang tih rêng ka beisei lo,” a ti. A sawi zêlnaah, “Zaa za chuan ‘a ni e,’ kan ti ngam chiah lo na a; amaherawhchu, he thlân hi kum tam tak chhûng chu khawih sawn lohin a awm tawh tih a lang a, scientist-te leh historian-ten kum tam tak an lo buaipui tawh chu a ni ngei e,” a ti. An thil hmuh chhuahah hian he lung khum hi he lai Biak In an tihchhiat te, suasam

leh siam that a nih lai pawhin khawih chhiat leh tihsawn a ni miah lo tih a lang bawk.

He inphûmna lung khum hi a ngai ngaiin an laih chhuahnaah an dah leh a, khawih danglam emaw, khawih sawn emaw an phal chuang lo a ni. He Biak In (Church of the Holy Sepulchre) leh Isua an phûmna hmun siam that leh chei that hna hi Greek Orthodox, Roman Catholic leh Armenian Orthodox Kohhranho that kawpa thawh a ni a. Isua thlân pâwn lam tihfai leh chei thata thuum that nân hian US dollar maktaduai 3.4 ruahhman a ni a, an tum ber chu hun lo awm zêl tûra thatharte tâna hmuh theih leh tlawh theih tûra vawn that a ni.

- CHRISTIANPOST

## China rama Pastor pakhat damna testimony

Pastor Zhang Heng, China Gospel Mission-a an Director leh Zaidao Kohhran, Beijing, China-a Pastor senior ni bawk chuan New York-a Movement Day Global Cities tih hun an hmannaah damna mak tak a

chan chungchâng sawi chhuakin, amah leh a chhûngte Kristian an nih dân chanchin mipui kal khâwmte a hrilh a. The Christian Post-in a târ lan dânin, Pastor Heng hian natna mak tak mai, doctor-te pawhin eng nge a nih an hriat theih loh chu a naupan lai aţangan a vei a, a natna chuan amah chu a tizeng bawk a, mahni intihlum hial pawh a lo tum tawh thîn a ni. Kum 1979 khân a nun hrehawm leh tuihâl lutuk chuan thuhrlitu pakhat koin Isua chanchin hrilh tûrin a ngên a, “Ka thlarau damna ai mah in, ka taksa damna ringawt ka rilruah a awm zâwk a ni,” a ti.

Dam a chhâk êm avâng chuan chaw nghei aţwnġtai hun a hmang a, a ni sarih ni chuan Pathianin tidamin a zeng pawh chu a dam ta nghâl a. Pastor Heng-a chhûngte pawh chuan mak an ti êm êm a, Isua Krista chu ringin Kristianah an inpe nghâl bawk a ni. Pastor Heng chuan Pathian tihdamna a chan chu duh tâwk mai lo in rawngbâwl hna a ţan a, kohhran te dinin, ram pum huap missionary tih chhuah lamah ţan a la nasa êm êm bawk a ni.

Kristian a nih vâng hian Jail-ah kum thum lai a tân phah tawh bawk. China ramah Kristiante hian tuar reng mah se, ringtu an pung tual tual a, Pathian hnathawh nasa takin a lang reng a, Kristian hi maktaduai 100 vêl awm tawha chhût a ni bawk.

- CHRISTIANHEADLINES

### **North Korea Kristiante aţwnġtaina**

Kristian pâwl (organization) pakhat North Korea-a Kristiante harsatna tawh aţnpuî tûr leh buaipuitu zînga mi pakhat chuan mak tak maiin North Korea Kristiante hian anmahni zalênna leh nawmsakna tûr dîlin an aţwnġtai lo va; mahse, khawthlang mite pawisa leh khawvêl hausakna buaipuia hun hmanġte an aţwnġtaisak thîn thu a târ lang. Rev. Eric Foley, Voice of the Martyrs Korea-a an hotupa chuan North Korea Kristian pakhat chuan an rama rorêlna hrehawm tak chu thlâk a nih theih nân an aţwnġtai ngai loh thu a sawi tih a târ lang bawk. International Christian Concern-in a târ lan dânin North Korea rama Kristiante tawrhna hi kan rin phâk aiin a nasain a hrehawm

zâwk a, ringtute chu zawn chhuaha, tântir an nih bâkah tihlum hial an ni thîn.

Kristian pakhat chuan, “Min lo ÷awngtaipui ula, keini pawhin kan ÷awngtaipui reng che u a ni, thil tam tak in nei a, in rinna hi in pawisa leh in zalênnaah in nghat nasa lutuk a. North Korea-ah chuan pawisa leh zalênna kan nei lo; amaherawhchu, Krista kan nei a, chu chu kan tân chuan a tâwk êm êm a ni,” tiin a sawi. Rev. Foley chuan khawthlang Kristiante hian North Korea Kristiante zalênna ai mahin tihduhdahna leh hrehawmna kârah pawh huaissen tak leh chhêl taka Krista tâna an nun zêl theih nân kan dîlsak a pawimawh zâwk a ni, a ti.

- CHRISTIANPOST

### **Khawvêlah Kristiante an chêp telh telh**

European Union special envoy Jan Figel-an International Freedom of Religion or Belief Day hawnnaa a thusawinaah chuan Kristiante hi kan chêp telh telh a, khawvêl mihring zaa sawmsarih panga chuan sakhaw zalênna an nei lo tih a târ lang. “Mihring zalênna hi ding chang

tûr leh mi dangin zalênna an neihna tûra kan thawh dâwn chuan mi tinin sakhaw zalênna kan chan theihna tûrin kan bei tûr a ni,” a ti. A sawi zêlnaah chuan, “Hmun hrang hranga awmze nei taka mi thah leh sawisak te, mâtarna te kan hmu reng a ni,” a ti bawk.

Kristiante tihduhdahna chungchâng chhui chiangtu pâwl Open Doors-in khawvêl ram 60 chuang aṅanga a chhinchhiah dânin November 1, 2014 leh October 31, 2015 inkâr khân Kristian 7000 chuangin nunna an chân a. Hetiang hun huam chhông ang tho 2016 atâna an chhinchhiahnaah chuan kum hmasa lam aini 3000 chuangin nunna chân hi an tam zâwk bâkah Biak In 2400 chuang beiha tihchhiat a ni bawk.

Hêng thil thleng leh Kristiante tihduhdahna hluar chhan ber pakhat chu Islamic firfiak pâwl Islamic State, Boko Haram leh Al-Shabaab te Middle East leh Africa rama an rawn lian chho zêl leh ram rawn la chho zêl hi a bulpui ber a nih thu târ lan a ni bawk.

- CHRISTIANPOST

## Maharastra-ah Hindu firfiakten Pastor sawisa

Maharastra state-a Hindu firfiakte chuan an hruaitu Gurunath, Shri Ram Foundation (Shri Ram Pratishtan Sanghtan) president hoin Pastor Prasanth Bhatnager (45) chu nasa takin an sawisa a. House of God Kohhran Pastor Bhatnager leh Kristian dang palite chu Taloja khua, Raigad District, Maharastra-ah damlo ʔawngʔaisak leh Bible tract sema an kal kual chu Hindu firfiakte hian an man a, Public Hall-ah kalpuiin an tract sem te chu chhuhsakin zawhna hrang hrang an zâwt bawk. Hindu firfiakte hi pung khâwm zêlin an mi hrênte hi thahah an vau bawk a, a hnu deuhah chuan an mi hrên palite chu mi dang tâna ʔawngʔai tawh lo tûra vauin an chhuah ta a ni.

Chutih laiin Pastor Bhatnager chu car-ah phurin hmun dangah an kalpui ta daih a. Hmun fianrialah hruaiin tihluhna hmanga Kristiana mi dang inlehtîrah an puh a, thingtlâng mite rilru tibuaiah an puh bawk. Thîrtianga vuain, nasa takin an sawisa a, pistol-a tinin kah hlumah an vau

a. Khâwnvârtuia leihin hal hlum an tum bawk. Nasa taka an sawisak hnu pawhin Lal Isua fak chung zêlin a ʔawngʔai a, chumi chuan a sawisatute thin a tirim zual hle a. Ngawi tûrin an vau a, chil te chhâk khumin an zun khum bawk a, “Hetiang a nasa taka min sawisak hnua ka dam chhuak leh thei hi thilmak a ni a, kan chung a thil thleng avâng hian Pathian hmangaihna leh rinawmna Chiang takin ka hmu a ni,” tiin Pastor hian a sawi.

A sawisatute hian an khaw bul daih nikhaw hre lovin an hnutchhiah a. Police-te chuan he thil thleng avâng hian FIR an ziaik lût bawk a ni. Tihluhna Kristiana inlehtîr tu mah an awm lo va, Bible tract te pawh a la duh lo chu tu mah pêk luih a ni bawk lo a ni. “ʔawngʔaisak tûra min ngenin kan ʔawngʔaisak a, Biak Inah pawh anmahni duh thu ngeiin an rawn inkhâwm a ni, tu mah tihluhnain Kristiana inpe tûrin kan ti ngai lo, anmahni duh thu ngeiin an rawn inpe a ni,” tiin Pastor Bhatnager chuan a sawi bawk.

- CHRISTIANNEWS.NET

www.mizoramynod.org



**Upa R. Lalbuatsaiha,  
Jubili Kohhran, Mission  
Vêngthlang zawhna**

**Z.** Kristian Hla Bu No. 495-naah hian châng khatna tlar thumnaah “Vânram in êng leh malsâwmna, kan tân a han buatsaih ang,” a ti a. A thunawnah hian “Vânram kan thlen hun chuanin, Chu ni ropui chu kan lâwm êm êm ang,” a ti a. Heta ‘chu ni ropui’ a tih hi eng ni ber nge ni ang le? Vânrâm in êng a han buatsaih ang, a tih hi ni zâwk âwm tak a ni a. Chuvângin, vânrâm kan thlen hun chuanin chu in ropui chu kan lâwm êm êm ang, tih ni ta zâwk sela a hla thu nên pawh hian a inrem zâwk si a. Chhut leh hunah chuan ‘ni ropui’ ti tawh lovin ‘in ropui’ tiin thlâk ta ila a inrem zâwk âwm e. Ni ropui, lawm êm êm tûr a tih hi sawi fiah leh sawi chian theih a ni em?

**Ch.** ‘Chu ni ropui chu kan lawm em em ang’ tih hi saptawngah

chuan *What a day of rejoicing that will be!* tih a ni a. ‘In’ tih ai chuan tuna kan hla bu-a a awm mek dan ‘ni’ tih hi a dik zawk hmelle.

**T. Upa Lalbiaksiana,  
Chekâwn zawhna**

**Z.** Synod hian bengngawng leh ãawngtheilote zaizira Pathian thu hrilhna tûr biak in (sign language church) hi a nei tawh em? A nih loh pawhin hetiang lam hawi hma lâkna hi a nei tawh em? Lo la nei lo ni ta se, hma lâkna chi a ni ang em?

**Ch.** Kan Synod hian bengngawng leh ãawngtheilote zaizira Pathian thu hrilhna tûr biak in (sign language church) hi kan la nei lo. Hetiang lam hawi hma lâkna pawh hi kan la nei lo a ni ang. Hetiang lama hma lak kan duh a nih chuan Inkhawmpui kal tlangin Synod Inkhawmpui ah thlen chi a ni ang.

**PC Lalringliana (Sena)  
zawhnate**

**Z.1.** Kohhran Upate leh Pastor-te an lo boral hian in lama vui zawhah Biak In lamah vui leh a ni ãhîn a, hei hi inchawimawina thil nge,

*tûnlai hunah hian a buaithlâkna chen a awm tawh lo maw?*

**Ch.** Kohhran Upa leh Pastor te Biak In lama kan vui thin hi inchawimawina leh induhsakna niin a lang. In lama hun kan hman hi chu ‘vuina’ tiin kan sawi ngai lo va, ‘thlahna’ tiin kan sawi thin. Biak Ina hun kan hman hi ‘vuina’ tia kan sawi dan chu a ni.

**Z.2.** *Presbyterian hi inkhâwmpui thurêla kal kan ni a, Kohhran mal thu Bialah, Bial thu Presbytery-ah, Presbytery thu Synod-ah. Chutianga rorêlna inlalâwn chu a ni. Ka zawh duh tak chu Kohhran mal hian Bial Inkhâwmpuia thurêl tûr agenda hi Bial Inkhâwmpuia a chhawp chhuak thîn a, he aganda hi kohhran mala Bial Inkhâwmpui palaiten inlung rual taka an siam tûr nge, Upaho siam tûr? Palaite hian mahni kohhran agenda siamnaah hian zalênna an nei ve em, nge member aiawh tihkimna mai, kohhran mal agenda te hi kohhran mal Bial Inkhâwmpui palaite hian thlîr hova, sawi ho hnua Bial Inkhâwmpuia chhawp chhuah*

*ni thei se a va tha âwm e. Hemi chungchângah hian Synod hian inkaihhruaina a nei em?*

**Ch.** Bial Inkhawmpui Agenda hi Kohhran Committee-in a buatsaih thin. Bial Inkhawmpui Agend siam dawn hnaiah Kohhran Committee a thu thin a. Chuta ngaihtuah tur chuan Kohhran mi tu pawh thu theh luh duh nei chuan Kohhran Secreaty hnenah theh luh theih a nih thu Kohhran Secretary ten Pathian Biak Inkhawmah an puang thin, Kohhran mipui tan thu ngaihtuah tur theh luhna hun Kohhran Committee-in a siam sak thin. Chutiang chu kan kal dan a ni. Kohhran mal agenda te kohhran mal Bial Inkhâwmpui palaiten thlîr hova, sawi ho hnua Bial Inkhâwmpuia chhawp chhuah hi kan ti ngai lo.

***Upa B. Dêngkhûma,  
Bairabi South zawhna***

**Z.** Kristian Hla Bu No. 398-na “Nangni chhandam fate tho r’u, Hruaitu Krista bêlte chu” tiha ‘bêl’ tih lai hi kohhran hruaitute pawhin kan lam (sawi) dân a inang lo nual a, bêl (chaw chhum bêl) tia ri sânga lam tûr nge, ri

*hniama lam tûr? Ri sânga lam hi a dik zâwk a nih phei chuan a hla thu awmzia hi sawi fiah deuh a va tha ve.*

**Ch.** ‘Bêl’ tih hi a ri hniama lam tur a ni e.

***Upa Vânlalsiama,  
Tuithiang zawhnate***

**Z.1.** *Kohhran inchhiarna form-a puitling baptisma chang tawh, dân la zawh kim lo (column 2) tihah hian puitling tih tak hi engtin nge kan hrilh fiah ang? Then-khatin kum 14 an nih chuan puitlingah Synod-in a chhiar an ti a, kum 14 ni tawh mah se, dân la zawh kim lote chu full member an ni dâwn em ni?*

**Ch.** Kohhran inchhiarna (statistics) bikah chuan kum 14 la pumhlûm lo leh a hnuai lam zawng hi naupangah kan ngai a. Baptisma chang tawh siin kum 14 a pumhlûm tawh hnu pawha Dân a la zawh kim loh cheu chuan ‘Puitling, baptisma chang, dân la zawh kim ngai lo’ kan ti thîn. Inneihna chungchâng bikah erawh chuan sawrkâr thu chhuak ‘The Prohibition of Child Marriage Act 2006’ chuan innei

thei kum bithliah âtn mipa kum 21 leh hmeichhia kum 18 pumhlûm a tih avângin sawrkâr thu chhuak hi kan hmang zui ve ta (SEC 230:41). Kohhran Statistics-a puitling kan chhiar dân leh Inneih chungchâng a puitling kan chhiar dân a inang lo a nih chu, hei hi ngaih pawlh loh hrâm ni se.

**Z.2.** *Kohhran inchhiarna form-a column 12-naah hian naupang kum ruk chin leh a hnuai lam zât tih leh column 13-naa kum ruk chung lam zawng zawng tih hi Upaten an bial theuh uluk taka chhiarin a zât an târ lang a. Mahse, Bial statistician form-ah târ lanna tûr column a awm leh si lo va, he column 12&13-na hi awmze nei lo inchhiarna niin a lang a, pah mai a va tha êm!*

**Ch.** Kumina Statistics Form Khaikhâwmna (Bial Statistic Form i tih hi) chhut tharah khân Column lian X-na ziaik leh chhiar thiam (Literates) kha chhut tel a ni ta lo va. Kohhran inchhiarna form phêk mal leh a khaikhâwmna Presbyterian Church of India, Mizoram Synod Statistics kha inmil chiah tûra siam that a ni a. Tûnah hi



chuan kan Statistics Form hi chhôngkaw chhiarna form nêh khân a inkaihnhawih ta vak lo niin a lang. Chu vâng chuan chhôngkaw chhiarna form-a column 12&13-na kha Statistics atân chuan awmze nei lo a ni tawh mai ang chu.

**T. Upa Thinlaihnhêma,  
N. Sêrzâwl zawhna**

**Z.** Pathian Biak Inkhâwm Hruaina Bua Lalpa ṭawngṭaina sawi dân tûr a rawn ziakah hian ‘Lal Isuan ṭawngṭai dân min zirtîr angin’ tih duah loh tûr tih a ni a. Kan Bible-ah hian tûna hman lai zûlzui ang deuh hi Luka bung 11-ah leh Matthaia 6:9-ah hian kan hmu a. Heta a lan dânah hi chuan Lal Isuan a zirtîrte ṭawngṭai dân a zirtîrna ni berin a lang a. Lal Isua ṭawngṭaina tak tak chu Johana 11:41-43; 17; Luka 10:21; 22:42; 23:34; Marka 14:36; Matthaia 26:39-ah te hian kan hmu a. Chuvângin, Lal Isuan ṭawngṭai dân min zirtîr angin tih hi a dik ber zâwk lo maw?

**Ch.** Lalpa ṭawngṭaina (English - Lord’s Prayer) tih mai hi hman dân tlângpui chu a ni e.

**Upa Lalthanmawia,  
Vairêngte Kawngthar  
zawhna**

**Z.** Synod Bu 2015 phêk 46 hnuai General No. 4-naah hman nghâl tûrin kan kohhran mi mahni intihlum an awmin dâr vuak ve tawh tûrin Synod Inkhâwpui wavi 92-nain a rêl fel tawh a. Kum 2016 Pastoral Ministry Kaihhruaina Revised & Enlarged phêk No. 46-na hnuai VI, Chhiat ni, Ṭhat ni Kaihhruaina, A. Chhiat ni Sub. No. 1-na tlar tâwp berah mahni intihlumah chuan mitthi dâr vuak loh tûr a ni, tih a ni leh bawk si a. Khawi zâwk nge hmana rin tûr ni ang le?

**Ch.** I rawn hmu chhuak ṭha hle mai, a lâwmawm e. 2016 Pastoral Ministry Kaihhruaina Revised & Enlarged-ah hian 2015 thurêl Gen. 4-na kha seng luh hmaih palh liau liau a ni a. Synod 2015 Gen. 4 kha rin zâwk tûr a ni e.

**B. Vânlalvuana, Bethlehem  
Vênglai zawhnate**

**Z.1.** KHB No. 489-na ‘Vân hmun ropui hmangaih ram’ hla thunawn tlar khatna tonic

*solfa 'nakinah' tih lai slur hi mipuiin khuang hniha kan sak hian 'slur' hi kan hmang thiam si lo, vuak chanve angin kan sa a, 'Nakinah a in nuamah' ti angin kan sa tho tho si a. A hla thu tidanglam hretin 'Nakinah vân in nuamah,' ti law law ila, a Chiang zâwk lo'ng maw?*

**Ch.** I rawtna hi hla thu sak fuh hleih theih loh siam rem rawtna a nih rualin a thu lam (syllable) siam belh rawtna a ni tel nghâl bawk a. Hetianga slur tûr slur awm lova a thu dah belh hi remchân lohna awm avângin kum 1942-ah te, 1952-ah te 1983-ah te tam tak an lo siam rem tawh zâwk a. Chuvângin, han tharthawh leh pawh hi a remchâng chiah lovin a lang.

Tin, a thu thlâk nâna i rawn rawt **nakinah vân in nuamah** tih pawh hi kan sak fuh hleih theih loh **nakinah in nuamah** tih nêh hian a thu awmzia a inang thovin a lang a. Tihdanglam kher ai chuan tûna a awm dân anga dah mai hi Kristian Hla bu buatsaihtute chuan ða maiin an ngai a ni ang e.

**Z.2.** *KHB No. 500-na 'Mi thianghlim kalna' tih hla,*

*châng thumna, tlar hnihna lai tak hian a hla thuin a tum a phawk chhuak zo lo deuh va.*

*Chuvângin, tlar khatna pawh siam rem hretin 'Kan hnuk chah dâwnin hrehawm hle mah se, Thihna lui râphtlâk takah pawh' ti ila, ringtuten thihna kan ngaih dân leh hmachhawnaah hian mi a kaihruai ða sawt lo'ng maw?*

**Ch.** Mi hla lo phuah leh lehlin tawh te hi a zahawm a, ngaihruat leh zêl din pawha a sawi tum lang phâk lo emaw, a inhawi lo lutuk emaw a nih loh chuan kut lo thlâk hmasatute tih dân khawih danglam hi ngaihtuhtuten an hreh hle ðhîn. Tûna i rawn sawi pawh hi thu inkal thelh a ni mai a. *Kan hnuk chah dâwnin, thihna lui râphtlâk kan tân tuarin, hrehawm mah ila; Lalpan râl leh lamah min kaipui ang...* tia ngaihruat theih mai a niah ngai ila. Hlaah hi chuan thu tuang pângngai (prose) anga Chiang bal lo deuh te pawh a awm fo ðhin hi maw le! He hla pawh hi a phuahtuin a sawi tum chu a hriat theih tho mai a, chu vâng chuan Kristian Hla bu buatsaihtute hian khawih danglam loh hi ða zâwkah an ngai a ni ang e.



**LAL PIANNA BETHLEHEM AN  
THLENG LO  
(Mt 2:1-10; Lk 2:15-20)**

- Rev. Robawia  
Vaivakâwn

Ringtute tân krismas thawnthu hi a ngaihnawm reng mai a nih hi. Hmânlai Juda-te tân pawh Messia lo lan hun, zâwlneiten an hrilh lâwk thu hi thu ngaihnawm tâwp thei lo a ni. A lo pianna hmun tûr zâwlneiten kum 700 hma lam daiha an lo sawi tawh chu an chhian ngun hle a ni ang, khawchhak mi fîngten lal Heroda hnêna, “Khawiah nge Juda-te Lal lo piang chu?” tia an zawh khân Heroda a buaia a mangang hle a, puithiamte leh lehkhaziaktute a zawh khân awlsam takin Mika 5:2 thuin an chhâng nghâl vat a nih kha. Keini tûnlaia mite pawhin kum tin krismas kan hmang chungin krismas thawnthu leh a boruak hi kan phûrpui reng a nih hi. Amaherawhchu, Bethlehem, Krista, Messia lo pianna thleng leh thleng lote chanchin hi kan bêl Chiang em aw tih hi kan ngaihtuah ngai em le?

Isua pian thu hriaa berâmpu leh khawchhak mi fîngte Bethlehem thlenga ran thlênga nausên leh a nu Mari va hmutute hi chu an chanchin kan hre t̄heuh mai, an haw leh hnua an thil tih dân pawh kan hria a, sermon ngaihtlâk nuam tak a nih hi. Mahse, Bethlehem thleng ve lo Heroda leh Juda puithiamte leh lehkhaziaktute thil tih dân hi kan ngaihtuah zui ngai em le? Sawi thui ngai lovin Heroda leh Juda-ten an thil tih dân pawh kan hre tlângpui ti

rawh u. Hei hian krismas kan hman hian Bethlehem thlenga kal leh kal lo inkâr danglamzia chu a hriat mai a ni.

Tûnlaiah krismas kan ngaisâng a, a lo thlen dâwn tawh chuan mi tin kan buaiin kan phili êm êm vek a, kan inbuatsaih atalângin krismas ni pawh hmang nuam lo rawih khawpin nu leh pa tam tak chu kan buai t̄hîn a nih hi. Chuti khawpa krismas hmang uar e ti lovin kan krismas hmang zo chu, krismas-in a rawn thlen tûr, “Chungnung berah Pathian

ropui takin awm rawh se. Lei chung a lawm êm êm mihringte chungah rem thu lêng rawh se,” tih chuan awmzia a nei leh lêm hlei lo va. Juda puithiamte, lekhaziaktute leh Heroda te ang bawka Bethlehem a Lal thar lo piang kan hmuh ve loh avâng a ni thei ang em?

Bible-a kan hmuh angin Heroda chuan Bethlehemah Juda-te lal lo piang chu Juda upate ațangin a hria a, mi fîngte zui ve ta mai lo chuan, nausên chanchin chu dîl chhût taka zâwta amah rawn hrilh leh tûrin a chah a; mahse, mi fîngte kha kawng dangah an haw ta daih si a, a thinrim chuan Bethlehem khua leh a vêla mipa naupang kum hnih chin a râwt ta buaih buaih mai a nih kha.

Tin, Juda puithiam leh lekhaziaktu, Chiang taka Pathian zâwlneite thusawi hria leh ring, Bethlehemah ‘awptu’ chu a pian tûr thu Heroda hrilhtu an nih kha. Kha tih laia thil mak chu: Juda-te leh an hotute kha Messia beiseitu, zâwlneite thusawi âwiha, Messia nghâktu an ni a. Khawchhak mi fîngten, “Khawiah nge Juda-te lal lo

piang chu, khawchhak lamah a arsi kan hmu a, amah chibai bûk tûrin kan lo kal a ni,” an tiha Heroda hrilhfihtute khân Bethlehem an pan ve hauh lo kha a ni. Khawchhak mi fîngte kha chuan zâwlnei Mikan, “Nang, Bethlehem, Ephratha, Juda rama sâng tam tak zîngah tê hle mah la, i lak ațang hian Israel-ho rorêltu tûr chu kan tân a lo chhuak ang a, a lo chhuahna chu hmasâng ata chatuan thlengin a ni,” (Mik 5:2) tih hi an hre ve lo. Chuvângin, Bethlehem pan dîng lovin lal Heroda in an rawn pan a, an buai ta nuaih mai a nih kha. Mahse, Heroda n Juda puipate a puna annin an lo hre hle mai si. Zâwlneite thusawi ringa Messia nghâktuten a pianna Bethlehem an pan lo tlat mai hi kan ngaihtuah ngai em? Vawiin thlengin Messia nghâkin khawvêl ram buai ber leh râlmuang lo berah an la chêng ta reng a nih khu.

Pathian thuin Messia, Krista lo piang tûr a sawi, a pianna hmun tûr lam hre sia, a pianna pan duh lo tlat Juda hruaitute kan dem viau mai thei; mahse, keini tûnlai Kristiante hi

i inngaihtuah Chiang ang u. Krista lo pian laia Heroda leh Juda hotute ai khân kan ɣa bîk chuang ang emaw chu! Krismas chungchâng thuah tu ma hrih hriat kan ngai lo. A pianna Bethlehem lah hlaah nêl lam kan sa kûr ngiai nguai a ni lâwm ni? Kum a lo thara inchhuang tûr kan awm em?

Krismas kan hman ɣin hi Kristiante tân chuan nun kan siam ɣatna tûr leh Pathian lam kan hawi tharna tûra hun pawimawh ni âwm taka a lan lai hian, tân hma deuh khân mi za têl fê hnên aɣanga zawhna chhâna an tiha a lan dân chuan mipa, hmeichhia tleirâwl suahsual bâwlte hian eng hunah nge thil sual tih an chîn ɣan, tih chhâna tam berah chuan krismas vuak vêt lai niin an sawi tam ber. A dik thei viau âwm e. Kan krismas hman dân hi a huau huau, hlimhlawp thil hi a tam ber a ni a, kan inen chian deuh a ɣul.

Bethlehema nau piang va hmutute chuan krismas hmasa ber zâna vân miten krismas thuchah leh thupui ber an rawn puan, “Chungnung berah Pathian ropui takin awm rawh

se, leilunga a lawm êm êm mihringte chungah rem thu lêng rawh se,” tih hi thupui berah an nei a; nausên bulah an bawkkhup a, chibai an bûk a, an ro bâwmte an hawng a, thilpêk an hlan a, Pathian chawimawi leh fak chung zêlin an haw leh a, nausên a him nân an hriat bel sa kawng zawh mai lovin kawng dangah an haw a nih kha. Tûnlai Kristiante tân lei Bethlehem, Israel rama zuk kal kher a ngai lo tih kan hria; amaherawhchu, thlarau lam Bethlehem erawh chu kan thlen ve ngei a ngai.

Bethlehem chu ‘Chhang in’ tihna a ni a, chhang chu mihring chaw pui ber sawina a ni. Chuti a nih chuan ‘Nunna a ni’ kan ti thei baw ang. Tin, lal ropui Davida khua a ni baw. Hei hian chawimawina, Pathian ropui puanna a kâwk thei baw âwm e. Thlarau lam Bethlehem nausên, Isua piang va hmutute nunah chuan vân mite hla ropui, “Chungnung berah Pathian ropui takin awm rawh se, lei chung a lawm êm êm mihringte hnênah rem thu lêng rawh se,” tih chu an krismas hmang haw lam thâwm ri mawi a ni ngei ang.

Nikum 2015 krismas pawh kha kum dang ang bawkin hmun tinah ropui takin kan hmang a nih kha. Krismas leh kum thar lâwmin kan hlim hle a ni lâwm ni? Kum 2016 kan chuang kai a, eng nge he kumah hian kan hmuh? Kum 2015 December thla tâwp lama kan krismas hman khân eng nge nghawng a neih le? Bethlehem kan thleng zo lo em ni? Kum 2016 chanchin hi a va ngaihnawm lêm lo ve le! Kum 2015-ah kha chuan Kêlkâng harhna chhima kal kan tam a, kohran pawh kan hlim hle hlawm a ni. Thlarau hnathawh avânga khaw chhe hnuaia Aizâwl khawpui kawng dung bingbileta zawh chhuak pawh kan awm hial a nih kha, a ropui e. Mahse, kum 2015 krismas hmang zo kan hâwna 2016 chanchin hi i lo ngaihtuah ve ngai em?

Zu kaihnaawiha thalai thi tamzia te, kan vêngtu sipai police zu avânga za têt thihna te, cancer-a damlo kan tam dân êm êm te, HIV positive pun nasatzia te, drugs hluar êm êm te, tualthah, mahni intihlum tam dân te, police record-a thu buai ziah luh pun dân leh BPL kan pung

thûr thûr mai te leh sawrkâr hma lâkna a eng mah tuangtlam thei lo te, kan ram kawngpui motor kal that theih loh khawpa chhe fai deuh vek mai te hi 2015 kan krismas hmangin Bethlehem kan thlen loh rah a ni thei mai lo maw?

A eng pawh chu ni se, kumin 2016 krismas-ah hi chuan a hmangtu zawng zawngin Bethlehem thleng ila, berâmpute leh khawchhak mi fingte ang khân kan krismas hmang zo haw lam chuan Pathian chawimawi leh fak chungin kawng dang i zawh hrâm tawh teh ang u.

Heroda leh Juda puithiamte leh lehkhaziaktuten krismas thâwm hre reng chungna nausên pianna khua Bethlehem an pan duh loh avânga kha tih laia thihna râpthlâk, kum sâng kal liam tawha thi Rakili ruhro tap hawm hawm khawpa siamtu ang leh Israel hnam, Pathian hnam thlan meuh tlâk chhiat dân leh waviin thlenga khawvêl sawrkâra hmêlma ngah ber leh thlamuang lo ber ni ta reng mai te hre rengin Bethlehem nau piang vân miten an rawn thlahna hla hi a taka a lo thlen zêl nân i krismas ang u.

## HARHNA DIK

Sam 80:18; Johana 16: 12-14; I Johana 4:1

*Pastor H.Lallianzâra  
i/c. Sêrchhîp Pastor Bial*

Mizorama Pathian Kohhranhote hian chung lam ațangin malsâwmna kan dawng țin a, chu kan thil dawn țin hlu tak chu ‘harhna’ a ni. Mizoramah ringtu tlêm tê kan la awm lai 1906 ațangin a khât tâwkin Thlarau Thianghlimin min tiharh thar leh țin a, a va lâwmawm êm. He harhna hian ringtu a tipung a, kohhran hi hma a sâwntîr a, kan Pastor leh Upaten Pathian Thlarau Thianghlim hnathawh chu ățawngtaina nê an lo chhawm nung țin a, thlarau dang hnathawh lo tlazep tûr leh mihring thlarau, rilrua lo lang apiang tih duh nghâl mai țin te pawh thiam takin an lo vêng țin a, hruaitu hmasate inpêkna leh huaisenna avângin tûn dinhmun hi kan thleng a ni. Harhna dik chan hi malsâwmna a nih laiin, harna dik lo chan theih a ni a, chu chuan Thlarau Thianghlim a țin a hnâwl țin a, fîmkhur a ngai êm êm a ni. Harhna dik chungchâng kan sawi uar a tûl hle mai a, tûn ățumah hian tlêm kan zir ho dâwn a ni.

**1. Harhna dik chu nun ngui leh chau tiharhtu a ni:** Harhna kan tih hi Sap ățawngin ‘revival’ an ti a, chu chu Latin ățawng ‘revivere’ tih ațanga an lâk lehchhâwn a ni a, a awmzia chu “Nun ngui leh chau, thi lek lekten nun thar an rawn neih leh” sawina a ni. Chakna nei tawh lo rawn harh chhuak leh ang mai hian Pathian Thlarau Thianghlim chuan ringtute a tichakin a tiharh leh țin a ni. Pathian lam hawi lote nun a siam thar a, rawngbâwlnaah mi ățangkai a

nihtîr leh țin. Sam phuahtuin “Kan kîrsan lo vang che, min tiharh la; tichuan, i hming kan lam dâwn nia” (Sam 80:18) a lo tih ang hian, miin harhna dik a chan chuan Pathian lam hawiin an fak leh țin a ni. Harhna dik chuan nun ngui leh chau tawhte a tiharh thar leh țin a, harhna dik lo chuan vung viauva inhre chungin an thlarau nun a tichau tial tial a, a changtute nun chu a rei tial tial a, an phunchiar tial tial a, an chak lo tial tial țin a ni.

**2. Harhna dik chuan sual a simtîr:** Sual sim hi harhna dikin a ken tel thin a ni a. Sual sim chuang lo harhna chu harhna dik lo a ni. Lal Isua leh Baptistu Johana ten rawngbâwlna an tan phat khân an thupui ken leh an tlangaupui nghâl chu ‘Simna’ thu a ni. “Sim raw u, vânram chu a hnai tawh e” (Mt 3:2; 4:17) tiin mite an sual sim tûra zirtîrin an sâwm thin. He simna thu tho hi Tirhkoh Petera pawhin a rawn aupui leh a, “In sualte thai bo a nih theih nân sim ula, hawi kîr leh rawh u; chutichuan, Lalpa hnên ata harh hunte a lo thleng thei ang” (Tirh 3:19) a tia. Petera hian sualte thai bo a nih theih nân leh Lalpa hnên ata harhna dik dawng tûr chuan sim rawh u, a ti a ni. Lalpa hnên aţanga harhna ni lêm lo, thlarau nazawng aţanga harhna dawng tûr chuan sual sim a tûlna a awm lo vang. Kan hlim lâm harhna hi chuan sual simna a keng tel lo nge ni, kan lâm luih luih pawhin kan ram zîm tê leh kan khawtlângah hian sual hi a tam ngai rengin a tam mai a. Setana hian sual sim chuang lova thusawi te, kawng zawha hnehna puan te, lâmte hi chu a phal khawp mai, Isua aia politi-

cal party-in mi tam tak nuna thuneihna a nei sâng zâwk reng mai pawh hian simna tel lo harhna kan chan fozia a tilang a ni. Kan harhna chan hian kan sualte min simtîr sela, Isua Krista avângin kan nun danglam hi miten tlan pah pawhin an chhiar thei tûr a ni. Sual haw lo leh Isua Krista avânga nun danglam chuang lo harhna hi chu harhna dik lo a ni ang. Thlarau Thianghlim zâra an sualte sima an nun hlui vui liama, Isua Krista tâna nung tawh zawk, harhna dik changtute mi tam tak kan hmu mêk a, nang i tel ve em?

**3. Harhna dik chuan Isua Krista a chawimawi:** Isua Krista chawimawi hi harhna dik zia a ni. Kan kân kan chawimawi ang a, a ropui nân kan taksa kan hlân ang a, kan nun hian kan chawimawi tûr a ni. Biak In chhûnga fak leh chawimawi thîntute hian Biak In pawns lamah kan chawimawi chhunzawm zêl tûr a ni a. Kan harhna dik chan hi kan chhûngten an chhawr ţangkai hmasa ber ang a, kan chhûngten min âwih phawt rawh se. Kan nun danglam hmu rawh se. Kan awm dânah harhna dik kan chan



leh chan loh a Chiang vek thîn. Kan chhângten min âwih hma chuan mi dangin min âwih dân lo a ni. Thlarau Thianghlim chuan Lal Isua a chawimawi thîn. “Ani chuan kei mi chawimawi ang” (Jn 16:14) Lal Isuan a tih ang kân Thlarau Thianghlim zâra harhna dik changtute chuan Lal Isua an chawimawi thîn a ni. Isua ropuina atâna hnehna puanga au vak vakte pawh hi thil tha a ni, hei aia tha zâwk chu kan nuna kan awmna hmun apianga hnehna puan leh chawimawi hi a ni.

**4. Harhna dik chuan thutakah a hruai lût:** Harhna dik chuan thutaka nung lo kha thutak Isua Kristaah a hruai lût thîn. Isua duh zâwng chu an duh zâwng a lo ni a, a nuam chin leh a huau huau leh a phawvuakah tâwp mai lovin, Isua Krista avânga tawrh, hah, chân leh nat an huam thîn. Harhna dik chuan Isua Krista tâna ‘Mi hlangah’ a siam a, chûng mite chu thutaka awmte an lo ni thîn. Thlarau dik tak chang leh chang lo hriatna tûr chu thutakah hruai luhin an awm em tihah hian a ni. Lal Isuan “Nimahsela amah, Thlarau dik tak chu, a lo thlen hun chuan

thutak zawng zawngah chuan a hruai lût ang che u” (Jn16:13) a ti a, Isua leh a thute ni lêm lo, a chhevêl leh khawvêl thil buaipuia, thupui bera neih tûr a ni lo. Harhna dik chuan thutakah a hruai lût thîn a ni.

**5. Harhna dik chuan Thlarau Thianghlim a dah pawimawh:**

Harhna dik leh dik lo lan fiahna chu Thlarau Thianghlim a pawimawhin a lal em tihah hian chik thîn tûr a ni. Thênkhat chuan Thlarau Thianghlim hming lam chung rengin an dah pawimawh lêm lo. Thlarau Thianghlim aiin a thilpêk an lâwmin an duh zâwk fo. Kan duh leh kan tuipui tam tak hi thlarau nazawng hian min pe thei vek mai. Thlarau thilpêk buaipui rêng rêngin amah Thlarau Thianghlim kan dah pâwnlâng daih thei. Thlarau thilpêka puh siin, Thlarau Thianghlim tilungngai zâwngin a awm theih tlat baw. Mihring thlarau duh zâwng leh a thiltih kha Thlarau Thianghlim duh zâwng leh tiha sawi mai a hlauhawm hle a ni. Harhna dikah chuan a thilpêk ni lovin, amah Thlarau Thianghlim ngei kha a langsâr leh pawimawh berah a tang thîn. Thlarau Thianghlim leh

Thlarau nazawng hnathawh hi kan chik chuan kan hre thei ngei ang. Tirhkoivin fimkhur tûrin ti hian min chah kha, “Duh takte u, thlarau nazawng ring suh u; amaherawhchu, thlaraute chu Pathian laka mi an ni nge ni lo fiah rawh u” (I Jn 4:1) tiin. He thu hi hre reng ila, harhna dik chuan Thlarau Thianghlim a dah pawimawhin a tilangsar ber thîn.

### **6. Harhna dik chuan kohhranah a hruai khâwm:**

Bible-ah leh kohhran chanchinah pawh kan hmuh thîn Thlarau Thianghlim hnathawh pawimawh tak mai chu, Isua Krista ringtute a hruai khâwm thîn hi a ni. Harhna dik chuan Lal Isua Krista taksa kohhranah mite a hruai khâwm tawh thîn a, vawiin thlengin a hruai khâwm mêk zêl a ni. A hruai khâwmna hmun kohhranah chuan thlarau lam chawhlui Lalpan a buatsaihsak thîn a, rilâtâm hlau lovin Lal buhzêm ringin nun an hmang thîn. Harhna dik chuan kohhran a tipumkhat a, Lal Isua a ropui thîn a, harhna dik lo chuan kohhranah khi a siam a, inhnialna leh inrem lohna chawk chhuakin, kohhranah inthenna hial a thlen thîn.

### **7. Harhna dik chuan kohhran thurin a kalh ngai lo:**

Kan kohhran thurin hi Bible zirtîrna lâk tawi a ni a, hemi kalh zâwng hian harhna dik a thleng ngai lo. Thlarau Thianghlim zâra harhna dik hi kan kohhranah hian Mizo hnam tân Lalpan a rawn thlentîr thîn a, kan thurin a kalh lo mai ni lovin, a nemnghet zêl zâwk a ni. Kan thurin duh khawp lo leh tawng khawp lo harhna chang chu rei an daih ngai meuh lo va, an zuih ral leh thîn. Harhna lo thlen pawha a kaihhruai dân tûr kan en vat tûr chu kan thurin hi a ni. Rin dân, nun dân, zirtîrna dik leh dik lo te, him leh him lote kan tehna pui ber tûr a ni. Kan thurin kal pêlin harhna dik a chan theih loh va, kan thurin chhûngah hian harhna dik chu a inkhung vek zâwk a ni. Kan harhna chan hi Bible nêl a inmîl em tih hi zir chian a tûl hle thîn. Paula leh Sila thusawite chu a dik leh dik loh hriat nân ni tin Beroia khuaa mite chuan “Pathian lehkhaah an zawng thîn” (Tirh 17:11) a ni. Anni ang hian harhna a lo thlen hian kan thurin leh Bible keu vat zêl ang u.

### **8. Harhna dik chuan mihring nun a titlâwm:**

Harhna dik

chuan Isua nun a zirtîr thîn. Nun tlâwm, hawihhâwm, zahawm leh mite rem thîntu nun a siamsak a, mi dang tân hnawksak nih an hlauvin mi dangte tâna malsâwmna nih an tum hrâm hrâm zâwk thîn a ni. Harhna dik lo chuan mi a tichapovin, hre ber, rau ber, mite aia thlarau pâwl bîk leh hre fiah bîk niin an inhre thîn a. Anmahni an indahsâng ber a, mi dang thlarau chan an hmu hniam a, an chan anga chang lo apiang chu an hmu rau lo zêl a, mite dai loh ram daiin an inhre thîn. Châng sâng bera an indah thîn avângin mi thurâwn leh zilh an ngai thei lo va, an hmuh ang hmu ve lovah an chhuah zêl bawk. Hetiang mite hi chu zirtîr an har êm êm a, an nun a inhawng lo va, khalh ngîl theih an ni lo. Harhna dik lo changtute chuan Isua an sawi lâw lêm lo va, an nun leh rawngbâwlinaah anmahni an langsâr ber thîn. Harhna dik changtute nun erawh chu a inhawng a, fuih leh zilh an ngai pawimawh a, Thlarau Thianghlim an ngaichângin an nun leh rawngbâwlinaah Isua Krista a lâw ber thîn a ni.

### **9. Harhna dik chu thil mak leh dangdaiah a innghat lo:**

Mizoramah harhna a lo thlen apianga sawi rîk awm ve ziah chu thil mak leh dangdai lo thleng anga sawina hi a ni. Harhna dikah chuan Isua a lâw ber a, ani aia lâw zâwk a awm ngai lo. Isua hming hlih khawpa thil dang kan hriat lâw chuan inen lêt nghâl kan ngai tih hriat tûr a ni. Thil mak leh dangdai hrim hrim hi chu Kristianna huang chhûngah kher lo pawh Hindu-ho zîngah pawh a thleng nasa ve thîn a. Thlarau Thianghlim avânga thilmak lo thleng a awm laiin, thlarau sual hian mihringte Isua hnên aţanga min hruai bo nân a hmang ve thei bawk a ni. Harhna dik lo chuan thil mak tam tak a paw chhuak a, Isua hmêl a hlih thîn. Vên mite leh lei miten thil mak ber, a aia mak awm leh tawh ngai lo tûr kan sawi reng tûr chu “Pathian Fapa, Isua Krista, he leia mihringa lo changa, mi sualte tlan nâna kraws-a thia, phûma awma, thihna hneha tho leha vâna lâwn leh ta” chanchin a ni.

**10. Harhna dik chuan mihring a tihmasâwn:** Harhna dik chuan mihringte hma a sâwtîr thîn a, tisa leh tlaravah hma an sâwn thîn. Tisa thil leh thlarau lam thil dah hran lutuka, pakhat

chawi sân viau a, pakhat hlamchhiah viau hi ze dik a ni lo. Tisa takin kan thlarau mi ang a, thlarau takin kan tisa mi bawk tûr a ni. Taksa chêtna leh hlim lâмна te hi harhna dik kan chan theih nân a ẵngkai a, chutih laiin kan thlen vâwrtâwp tûr ni lovin tisa leh thlarauva kan ẵn lenna tûra kawng hlu takte an ni. Kan tum ber tûr chu Krista anna ẵn len a ni tûr a ni. Hnathawk thei lo zâwng a thlarau chang inti tlat te, ina an awm pawha chhûngte tâna ẵngkai mang rêng rêng lo zâwng a thlarau chan a him lo, mahni tân leh chhûngkaw tân pawha ẵngkai lo chu Pathian tân pheĩ chuan a ẵngkai lo leh zual ang. Rau ri ai mai, tisa leh thlarauva hmasâwn hlei thei lo leh ẵtutna ngaia ẵtuh reng an awm fô mai. Eng pawh ni se, harhna dik chuan rau ri ai lam ai chuan Pathian leh kan mihringpuite tâna ẵngkai tûr leh keimahni pawh tisa leh thlarauvah hma min sâwntîr dâwn a ni.

**Tlângkawmna:** Harhna dik chan hi a hlu a, kohhran mamawh tak a ni, chutih lai chuan harhna changtu Thlarau Thianghlim zai ngai lova a chêt erawh chuan harsatna thlentua ni fô. Bible-ah nula thianghlim sâwm mo neitu hmuakin an awm a, mo neitu a lo thlen mai loh avângin an vaiin an lo muthlu ta vek mai a, thâwk leh khatah mo neitu a lo thlen thu an hre phut mai a, an vai chuan an harh vek mai; mahse, panga chauhvĩn khâwnvârtui an keng a, panga dangin an keng lo. Nula khâwnvârtui keng ve loho khân eng thu nge an dawn tâk le, “Tih tak meuhvĩn ka hrilh a che u, ka hre lo che u a ni,” (Mt 25:12) tih kha an thu dawn a ni. Harh ve tho chung hian harhna dik lo chan palh a va hlauhawm êm, Isua hnên thleng lo zâwng hian keimahniah a tâwp palh ang e. Harhna dik tak chang tûrin Pathian Thlarau Thianghlim in kohhranhote hrui zêl rawh se.

## TIHDIKNA

Kristian Tlângau October 2016 issue-a kum 2016 chhûnga Kristian Tlângau copy la tam zual kohhran 20 kan târ lanah khân Ramthar Vêng Kohhran chu tihhmaih palh a ni a, copies 273 lain 13-na an ni a, tihsual palhah ngaihdam kan dîl e - Ed.

## KRISMAS CHUNGCHÂNGA ZAWHNATE

- Rev. P.C. Lalropuia  
St. Nicholas Church, Kolkata

Kristianten kumpui lingleta tlumtea thlîr taka kan thlîr chu Krismas hi a ni, ti ıla kan sawi sual kher âwm lo ve. Hlim taka hman kan duh rualin lunglêna leh khawharnate chu he hun ropui hian a rawn kai tho lawi a, kan nun hlimawm lai leh hlim lai nite chu Krismas nêna a inzawm tlat thîn vâng pawh a ni ang e. Krismas ropui taka kan hman lai leh kawng chi hrang hrang a tha leh tha miah lo huama he hun ropui hmang tûra kan inbuatsaih kum tin lai hian changkâna chuan min nangchîng ve zêl a; krismas kan hman dâna duhthusâm lo lai tam thîn hle mah se, tute ngaih dân belh chian dâwl chiah lote thu leh hla hmang hian kan Kristian thurin beih a ni fo va. Chûng zîngah chuan he ni ropui tak Krismas leh a ken tel thil dangte hi sawisêl duh an lo awm chho ve zêl bawk a. Kristian sakhaw haw êm êmtute thu leh hla internet leh lehkhabu lama chhiar tûr lo tam chho mêkah kan thurin leh thiltihte hi awmze nei lova innghat mai a ni lo tih kan hriat nawn fo pawh a tûl thîn rêng a ni.

Tûn tumah hian Krismas lo thleng tûr hmuahna ni pah fâwmin Krismas chungchânga zawhna leh sawisêlna langsâr zual deuhthe kan en kual thuak thuak ang a, chipchiar taka sawi erawh kan tum kher lo ang a.

**1. Krismas tih hi eng tihna nge?:** Krismas tih hi Old English ‘Cristes maesse’ (Christ’s mass) aţanga lo kal a ni a, a awmzia chu ‘Krista kût’ emaw ‘Krista ruai’ emaw tihna a ni ber ang chu. Ringtu hmasate hun lai aţanga Isua Krista pian lawmna tûra ni an serh hran sawina a ni. Noel

tih hi Krismas-a nau piang lawmna hla anga hman châng a awm a, chutianga hrilhfiahna pawh a awm. French ţawnga ‘Noel’ hi Krismas hun (season) sawina a ni a, chumi chu Old French ‘nael’ aţanga hman a ni a, chu chu Latin ţawng ‘natalis’ tih aţanga lo kal a ni leh a, a awmzia chu ‘piang, pianna’ tihna a ni. Sawi fiahna dang thenkhat awm mah se, hei hi a pawmna hawm hle. ‘Merry Christmas’ tih hi Spanish ţawngin ‘Feliz Navidad’ tiin an sawi a, Boney M hovin an lârpui hle a nih hi.

**2. December ni 25-ah Isua Krista a piang em? Krismas hi ring lo mite hnên aṭanga lâk chhâwn mai em ni?:** Kum zabi pathumna hun laia Rome-a khawsa theologian ṭangkai tak mai Hippolytus (170-235 AD) chuan Isua Krista hi December ni 25-a piangin a chhût a. He ngaih dân hi John Chrysostom pawhin a pawmpui baw k a. Tin, theologian, Cyril-a Jerusalema mi chuan Rom ram chhiarpui record a zirna aṭanga a chhûtin December ni 25 hi Isua pian niah a ngai baw k. Roman Kristian thil hlui zir mi Sextus Julius Africanus pawhin a chhûtina aṭangin 25<sup>th</sup> December hi Isua pian niah a ngai. Ringtu hmasate leh kohhran pate zîngah 25<sup>th</sup> December hi Isua Krista pian nia ngai nghet tlat an awm teuh a ni. Chutih rual chuan Bible hian Isua Krista pian ni tak hi a sawi lo va, ngaih dân inang lo pawh a awm thei âwm e. Sawisêltu thenkhatten Krismas hi hnam dang sakhua (pathian tam tak awm ringho) tih dân aṭanga lâk chhâwn niin an sawi thîn a. Chutianga sawi tûrin Romho khân December ni 17-24 chhûng hi an Saturnalia kût a ni a, thil nung zawng zawngte pathian an biaka an lawm hun a

ni. Chumi hnuah Emperor Aurelian-a khân saturnalia tâwp tûk 25<sup>th</sup> December hi Ni pathian biakna niah a puang baw k a. Tin, hetih hun lai hian Europe ram hrang hrangah ‘Yule’ kût an hmanṅ thîn a; German ṭawng a ni a, a awmzia chu ‘vir’ emaw, ‘vir lêt’ tihna emaw a ni a. Thlasik ni tawi ni ber aṭanga ni rei lam pana a vir lêt lawmna hun an nei thîn.

Sakhaw dangin chutiang kût an hman avânga Isua Krista kha piang thei lo tûr a ni chuang lo va, ring loten kût an hman avânga Isua Krista piang lawmna he huna nei thei lo tûr kan ni baw k hek lo. Ṭhenkhat chuan Palestina thlasik laiin pâwnah awm ngaihna awm lo leh Berâm vên pawh theih lohin an sawi a. Amaherawhchu, finfiahna nêna sawi theih chu hetih hun lai hian Temple-a hlan tûr Berâm hmêlhem lote chu thlasik laiin phûlah an riahtîr thîn a, an vêng thîn a ni. Eng pawh ni se, Isua Krista hi mihringte tlan tûrin a piang ngei a, chumi lawmna kan hmanna ni chu 25<sup>th</sup> December a ni.

**3. Eng tik kumah nge Isua Krista a pian?:** Bible-ah Isua Krista pian kum hi târ lan a ni lo va; amaherawhchu, chhût dân

hrang hrangte thlirin Isua hi BC 6-4 inkâr chhông vêla piang angin a ngaih theih a. Tin, chumi hnua piang anga chhûtna pawh a awm.

**4. Krismas hi eng tika hman ãan nge?:** Krismas lawmna hmasa ber chu 25<sup>th</sup> December, 336 AD-ah Emperor Constantine-a lal laiin hman ãan a ni a. Chumi hnu kum rei lo teah Pope Julius I chuan 25<sup>th</sup> December chu Krismas nia hman tûrin a puang. Sawi tawh ang khian an hman hma leh an puan hma hauh pawhin 25<sup>th</sup> December hi Isua Krista pian niah ringtu hmasate khân an lo ngai reng tawh tih kan hmu thei ang.

**5. Krismas tih aia Xmas tia ziah hi Isua Krista sawi bo tumna a ni em?:** Hun hmasa lama hmangtute hman dân enin Isua Krista sawi bo tumna lam a ni lo. Mizo ãawnga Krista tia kan sawiin ‘K’ a ri hmasa ber ãhîn a. Greek ãawnga Krista tia sawiin ‘K’ anga lam rik chu ‘X’ hi a ni a. Ringtu hmasate khân Xmas tia an lo hmang pawh kha Isua sawi bo tumna lam a ni lo vang. Kristian nih entîrna tûrin sangha lemte an lo hmang tawh ãhîn a, hei pawh hi sangha hi greek ãawnga a hawrap

(IKTHUS) kha a lam pum an siam a, chu chu ‘Isua Krista, Pathian Fapa, Chhandamtu’ tihna a ni.

Amaherawhchu, tûnlai khawvêlah kawng hrang hrangin Isua Krista hming ri lova Krismas hman tumna a pung nasa ta hle a. Tute lungawi loh hlahvâng te, khawvêl mi hrim hrim vângtein ‘Krismas’ tih aia ‘Xmas’ tia hman erawh a ãa lo hle ang. Kristian hmasate huna Chiang keini huna Chiang tawh lo a awm thei ang, keini huna Chiang kha a pawimawh zâwk ngei ang.

**6. Krismas Putar (Santa Claus) neih hi a ãul em?:** Santa Claus (Krismas putar) ang chi ngaih dân hi hmânlai thuziakah pawh hmuh tûr a awm tawh ãhîn a. Kristian sakhaw chhônga bul ãantu chu kum zabi 4-naa ringtu St. Nicholas, Myra khuaa mi a ni. A nu leh pain naupang tê a nih laiin an thihsan a. A nu leh pa hnên aãanga a rochunte chu ama tâna hmang lovin mi retheite hnênah a sem ta vek a; amah pawh naupang tein puithiam ni tûrin a kal ta nghe nghe a ni. A dam laiin mite tân a thilphala, a neih sumte a sem ãhîn a. A thih hnua pawh a

sabengtung ei tûrin naupangten buhpâwte an pe thîn. Titi lêng vêlah chûng naupangte chu Nicholas-a hian thilpêk rawn pe thinin an sawi nghe nghe a ni.

Eng pawh ni se, tûnlai atân pawh naupangte dâwta bum kher lo pawhin an hlimna tûr buatsaihsak hi a hlu a, Krismas putar a ni emaw, eng pawh ni se Kristiante hunpui bera naupangte hlimpui tûr thiltih hi a tha êm êm a ni. Chutih rual chuan an ngaih dân hrui pêng leh dik lo zirtîr lo tûra tih thiam erawh a tûl hle ang.

**7. Advent Krismas leh Advance Krismas danglamna enge?:** Advent Krismas hi Liturgical Church an tih mai, Roman Catholic, Lutheran, Anglican leh Methodist te hian an hmangh thîn. ‘Advent’ tih awmzia chu ‘lo thleng chho mêk, lo awm tûr’ tilna a ni. Advent hi Krismas hma Pathianni vawi li chhûngin an hmangh thîn a, Biak In leh a vèl an chei thîn. Thing hnah hringte an dah thîn a, chu chu Isuan chatuan nunna min pêk entîr nân an hmangh thîn a. Bati pathum chhiin bati hmasa ber chuan ‘Beiseina’ a entîr a, a dang pahnihte erawh chu kohhranin anmahni duh dânin an entîr thîn.

Advance Krismas kan hman tlanglawn tak hi chu kalphung êm êm a awm hran lo. Tih ngei ngei tûr thil a awm hran chuang lo va, a hun pawh a hmangtute remchân dânah a inngat a ni ber. Kohhran hmasa lama kan hmuh lêm loh a ni a, thalaiten Krismas lo thleng tûr hmuahna leh intihhlim nân an hmangh ber a, thilpêk leh zai ho te leh item chi hrang hrang hmanghin programme an siam thîn.

**8. Krismas Nativity hi enge?:** Krismas Nativity an tih chu Krismas laia Biak In leh a vèlah te leh kawthlêra Isua Krista piang lai lem te, a hun lai thil târ lanna tûra lem hrang hrang hmanga entîr hi a ni. Tûn hnu hian vêng leh khaw hrang hrangahte kan hmu ta zêl a. Krismas nativity lo chhuahna an sawi dân chuan a siam hmasa bertu chu St. Francis of Assisi a ni a, kum 1223 khân a lo ti tan tawh a ni. Israel ram tlawha a zin hawin Isua Krista pianna hmun lemte a siam ta a ni. Krismas Nativity hian Krismas boruakah mipui min chentîr thei a, a hlutna tam tak a awm thei ang. Chutih rual chuan hla phuahtute ang bawkin Bible-a



chuang ve chiah lo, mi mal chhui dawnna thenkhat belh a awm thîn a, Bible-a chuang lêm lo ngaih dân nghet tak min puttîr thei ve tho bawk.

### 9. Khawchhak mi fîng pathumte kha tute nge?:

Khawchhak mi fîng pathumte kha Bible-in an hming a sawi loh avângin hriat theih a ni tawh lo va. Bible-ah khawchhak tih a inziah avângin mahni awmna ram aţanga khawchhak lam mitthla a awl hle. Israel ram aţanga khawchhak a nih dâwn chuan mi fîngte hi Persia (tûnlaia Iran) ram aţanga lo kal an nih hmêl a, chuti a nih chuan km 800-900 vêl zin kawng an zawh tihna a ni ang.

Khawchhak mi fîngte khân (a) Pathian thu an chhiar a, an âwih tih a hriat theih. (b) Isua an zawng, (c) Isua an hmu a, engtianga hlu nge a nih an hria, (d) inngaitlâwmin chibai an bûk, an neih thil hlu an hlân, (e) mihring thu aiin Pathian an dah pawimawh. Mi fîng an ni tak zet.

**10. Mi fîngte thilpêk kha eng nge a awmzia?:** Mi fîng pathumte khân Isua Krista lo piang chibai bûkna tûrin rangkachak, beraw leh murra an pe a, chûngte chuan awmzia nei

ngei tûrin a ngaih theih a. Rangkachak hi nausên Isua mamawh leina tûr leh tlân bonaa sênsô tûr lam ai mahin hetih hun laia ngaih dânah chuan lalna leh chungnunna entîrna a ni. Beraw chu temple-a hâl rîmtui thîn a ni a, thianghlimna leh dikna a kâwk thei ang. Isua Krista nau lo piang hi mi dangte thianghlimna tûr, rîmtuina tûra hâl ral/hlan a ni tih a entîr a. Murra hi beraw ang deuha hman ruang chulh rîmtuina atâna hman thîn a ni a, chu dikna leh thianghlimna Lal chu nasa taka tawrhîr tûr a entîr thei ang.

**Tipna:** Sawi tûr tam tak a awm thei ang a, kan sawi sêng lo vang. Hêng kan sawi tâk pawh hi Bible-a chuang lêm lote leh zirna aţanga thu keuchte a nih hlawn avângin mi thiamte ngaih dân rual loh châng pawh a awm thîn. Chûngte chuan rinna kawngah harsatna a siamna tûr pawh a awm chuang lo va. Isua Krista, khawvêl chhandam tûra mihringa lo chang kha, a mihrinna târ langtu a nih mai bâkah thilpêk hlu ber a nih miao avângin Krîsmas hi a pawimawh reng dâwn a, khawvêl finna hmanga sawi bo theih a ni hek lo.

## ZAWH TÛR KAWNG CHHÛT NGUN

- B. Lalthangliana  
Chhînga Vêng

He thu hi Hagaia chuan châng thum lek chhûngah wavi hnih lai sawi nawnin, “In kawngte chu chhût ngun rawh u,” a lo ti a (Hag 1:6-8), a ngai pawimawh hle mai. Hagaia hun lai leh a sawi chhante târ lang lovin, kan ni tin nun leh khawsak phungah a pawimawhna leh kan hman nghâl mai theih tûr zâwngin i lo sawi teh ang.

**1. Mi mal kawng zawh tûr chhut ngun:** Kan lo puitlin dâwn, kum 16-18 vêlah hian kan kawng zawh tûr hriat thiam leh thlan thiam hi a awlai lo hle a. Mahse, kan rilru insiam lai leh ngaihtuahnate a vah kual nasat lai a ni si a, hun leh nun hman thât a tûl lai tak a ni bawk. Kan hun lo kal zêl tûrah hmasâwnna nei tûr leh changkâng ve deuh tûr chuan ‘Zirna’ hi a pawimawh êm êm a. Rilru leh ngaihtuahna a changkân loh chuan nun a changkâng thei lo. Changkâna leh hmasâwnna tak tak chu rilru lamah a ni a, chu chu kan neih hmasak a tûl a ni. Chuvângin, tum fel tak neih a pawimawh êm êm mai.

Thufing chuan, “Mi tum nei lo chu dîla hnahtel ro tla ang mai a ni a, tum nei erawh chu tuifinriata lawngpui kal ang a ni,” a lo ti a. Dîla hnahtel ro tla chu thli tlehna lam apiangah a vir kawi mai mai a, thlen chin nei thei pawh a ni lo. Tuifinriata lawngpui kal erawh chu a zau êm avângin râl aţangin a kal tih pawh a hriat loh a, a ding emaw tih tûr a ni. Mahse, zawi zawia a kal tho avângin a tum ram chu a thleng tho thîn.

Tum fel tak nei chu chutiang bawk chu a ni thîn a. Thing hnahte hi a thang reng a, a thán lai tu nge hmu thei? Pangpârte pawh zawi zawia thangin a pâr thîn, tu nge a thang lai hmu? Mihring hmasâwn dân pawh hi langsâr taka hmuh theih chu a tam lo. Mahse, tum fel tak neia kal chuan zawi zawiin hlawhtlinna a chuankai thîn. Chuvângin, tum fel tak neia hun leh nun kan hman hi a pawimawh êm êm a ni.

## 2. Chhûngkaw kawng zawh

**tûr chhût ngun:** Chhûngkaw tin hian mahni tâwkin ei zawnna tûr kan dap theuh a, chutah chuan ‘Pa’ hi kan pawimawh hle. Chhûngkaw ei zawn nân sumdâwn te, huan siam te, ran vulh te, sawrkâr hna te, a eng ber nge kan thlan dâwn? Tha bik leh tha lo bik a awm lo va, taima taka kan thawh chuan hlawhtlinna a awm vek a, a tha vek baw. Hlawhtling tûr erawh chuan kan rilru leh ngaihtuahnain hma a sâwn hmasak a tûl a ni.

Kan sawi tâk ‘Mi mal kawng zawh tûr’ leh ‘Chhûngkaw kawng zawh tûr’-ah te khân tisa khawvêl thilte hi thlaraua chantîr thiam a pawimawh hle a. Engkim hi Pathian thuneihna leh uapna hnuai mi vek a ni a, khawvêl hausakna kalsana thlaraua nun tum ngawt tûr pawh a ni lo. Kristiante hi rethei ngawt tûr kan ni lo va. Kan ni tin nun leh hnathawhnaah Krista a tel zêl tûr a ni zâwk a, a lal baw tûr a ni.

## 3. Mizo Kristiante kawng zawh hi kan chhût ngun a

**pawimawh:** Hemikawngah hian thil tam tak sawi tûr a awm a,

kan ngaih pawimawh pawh a inang lo thei hle âwm e. Tûn tumah chuan kawng khat chauh i lo sawi teh ang.

Kristian kan nihna ngawt pawh kum 120 chuang lai a lo ni ta a. Tûna kan hman mêk Kristian Hla Bu 18<sup>th</sup> Edition 2004, vawi 15 lai chhut nawn tawhah hian hla 600 a awm a, lehlin ni lo, siam pawh ni lo, Mizo irâwm chhuak hla 140 vêl a tel a, chûng zîngah chuan vânrâm ngaih hla 38 vêl a tel a. Kristian Hla Thar Bu chhut 10-na, 2007-ah hian hla 440 a awm a, chûng zîngah chuan ‘Chatuan ram ngaih hla’ 145 a tel a, hêng zînga hla 118 chu Mizo irâwm chhuak hlate a ni hlawm.

Kan hla phuahtute hian khawvêl hi lungngaihna, rûmna, mittui tlâkna, tahna ram niin an sawi a. Lianvêla (1886-1952) chuan, “Ral tawh mai se lei ninawm hi” a ti thlâwt a. Hleia (Rianghleia 1878-1954) phei chuan, “Aw ram hlun ka ram ropui, Angaiin ka riang lua e,” a ti vawng vawng a. Rev. Lianruma (1898-1980) chu Manipur ram Suangsang khuua a awm lain an lalin a hnawt

chhuak a, tlai ni tlâk dâwn ruaiah  
theipalingkawh bul thlâr bêlin, ni  
tla tûr chu a thlîr a, rilâm leh tui  
hâl pawh hre chang lovin:

*Ni tla ngai lo Zion  
khawpui,*

*Ngaiin ka rûm, ka tap  
chhûn ni tinin*

a ti ngawih ngawih mai nia.  
Vânram te hi a 'n sawi ril thiam  
lailêng khawp a. "Chung van rial  
rûmna piah Lalpa chênna  
ramah" tiin. Sawi tûr a tam, he  
lam hi chu duh tâwk rih mai ila.

Hêng vânram ngaih hla te hi  
a tha a, a thlûk a mawi a, Mizo  
rilrem zâwng a ni a, kan tuipui  
nasa hlawm a, a phuahtute an  
fakawm êm êm a, a chul thei lo  
va, a hlui thei hek lo, hnam ro a  
tling. Mahse, hêng hlate hian kan  
inawi lunglêng lutuk a, kan zuau  
pah a, kan tuarchhel loh pah  
a ni em? Kan Kristianna chen  
hian kan chhangchhiat pah a ni  
thei ang em? Kan kawng zawh  
hi i chhût ngun deuh teh ang u.

Kan Kristian Hla Bu, hla  
600 chuannaah khân Mizo irâwm  
chhuak hla 140 a tel thu kan sawi  
tawh a, khâng zîngah khân

Kristian nun lam hawi hla 10  
emaw chauh a awm a. Hla Thar  
Bu, hla 440 awmnaah pawh  
khân Mizo irâwm chhuak 145  
zîngah Kristian nun lam hawi  
pakhat mah a tel lo nia!

Tûn hma deuh aţang khân  
hla thar a chhuak nual a, krismas  
hla phei chu a thahnem deuh a.  
Mahse, kan hriat ve phâk  
tâwkah chuan ngaihtuahna thar  
(new thought or new idea)  
emawa phuah leh sawi chhuah  
dân thar (new interpretation)  
emawa phuah sawi tûr a tlêm  
hle. Hla thênkhat chu a awm  
zeuh zeuh a, chûng zînga pahnih  
chauh târ lang ila.

C. Lalzârmawia phuah hi a  
tha khawp mai:

*Hriat chian lehzual che hi  
ka va duh êm!*

*I hmangaihna leh*

*khawngaihna te hi;*

*Hre chiang ila nang ka*

*bosan tawh lo 'ng che,*

*Hriat chian lehzual che hi  
ka va duh êm!*

a ti a; a thlûk a mawi chang a ni  
lo, a thu ken hi a tak a, a ropui  
bawk a, hmasâwnna duhawm  
tak a ni.

Lalruali (1924-2001)-in February 1, 1965-a a phuah hla mawlh hi rahbi pawimawh niin ka hre thîn:

*Hneh theih loh nun ka nei,  
Lal Isua min pêk kha;  
Hmangaihna nun  
thianghlim,*

*Hneh zêl tûr nunna chu*  
ti meuhin tleirâwl aţanga ruh ngêţ natna tuar, a hnua lung natnain a tlâk buak leh, zak dona hmang chauha kal thîn huaisenna nun tak hi a va ropui êm! A hla hi a paukhauh a, a rum tha êl âwl hle.

Kan mi mal nun kawng te, kan chhûngkaw nun kawng leh kan Kristian nun kawngte hi i chhût ngun ang u. A hlimawm leh a nuam zâwnga naupang tui chêng hlim leh a lunglêng leh vânram ngaia kum 100 emaw dâwn lai kan inawih hnu hian, nun nghet leh tlo, khawvêl thilin a sawi ngîn mai mai loh, a pachang leh a tuarchhel zâwng, Setana do thei leh do ngam chia nun kahpathîr nei tûrin kan kawngte i chhût ngun ang u.

## MISSIONARY TRAINING COLLEGE HRIATTÎRNA

Missionary Training College (MTC)-ah Bachelor of Missiology (B.Miss) zir duh tân dîl theih a ni leh ta. Dîlna form leh prospectus hi ₹50-in office hun chhûngin MTC office, Mission Vêngthlang aţangin lâk chhuah theih a ni e.

Dil thei chin : Cl - XII pass chin  
Dil theih hun chhûng : 1<sup>st</sup> Oct. – 31<sup>st</sup> Jan. 2017  
Written test : March 1, 2017  
Interview : March 3, 2017

Sd/-  
(REV. DR. K. LALRINKIMA)  
Principal  
Missionary Training College

**COUNCIL FOR WORLD MISSION (CWM)  
GENERAL ASSEMBLY**

*Rev. V.L. Luaia Hranleh  
Sr. Administrative Secretary, PCI*

Council for World Mission (CWM) General Assembly, 2016 chu Jeju thliarkâr, South Koreaah ni 17 - 24 June 2016 chhûng khân hlawhtling taka neih a ni a. Thupui chu *“Healing: Hope in action”* (Damna: Beiseina tihhlawhtlinna hmangin) tih a ni a, Presbyterian Church of Korea (PCK)-in an thleng a ni. He hun hmang ve thei tûra Pathian khawngaihna ropui tak ka chang hi ropui ka tiin ka lâwm êm êm a ni.

**CWM chu eng nge ni:** CWM tih hming hi chu kohhranhoten kan hre lâw tawh fu mai thei a. Tin, CWM hnuaia kan missionary-te khawvêl ram hrang hranga awm, kan tawngtâisak fô thîn avâng te, tûn hma deuhvin tanpuina sum eng emaw zât te kan lo dawn tawh thîn avângte pawhin a hming ringawtah chuan kan mikhual lutuk âwm lo ve.

Council for World Mission chu khawvêl ram hrang hranga Protestant kohhran lian tak tak te, Chanchin Tha hrlina kawnga an thawh hona pâwl hming a ni a. A hmun pui London-a awm thîn chu kum 2012 aţangin Singapore-ah sawn a ni. Khawvêl ram hrang hrangah hian member kohhran 36 awmin, chûng chu ram bial (region) 6-a thên a ni a, chûng

region hming leh member kohhran awm zât chu hetiang hi a ni:

Europe - 5, Pacific - 9, South Asia - 4, Africa - 9, East Asia - 6, Caribbean - 3.

Keini hi South Asia region-a awm kan ni a, member kohhran pali awmte chu: Church of South India, Church of North India, Presbyterian Church of India, Church of Bangladesh te kan ni.

CWM hnuaiah hian rawngbâwlina pêng tam tak a awm a. Chûngte chuan programme chi hrang hrang, khawvêl ram hrang hrangah an nei deuh reng a. General Assembly tak erawh hi chu kum thum dan zêlah a kum linah nei thîn a ni. Mission hna te, zirlai scholarship pêk te, kohhran leh

ram hmasâwnna lama tanpuite hi a rawngbâwlna ki pawimawh tak zînga mi a ni. CWM hnuai missionary tam ber chu PCI aţanga kal, Mizoram Synod mi leh sa an ni nghe nghe.

**Pre-Assembly meeting:** Khawvêl ram hrang hranga member kohhran, ram then bial (region) 6-te chu region hnih zêl inkawpin CWM General Assembly lo thleng tûr ur lâwk nân Pre-Assembly meeting kan nei theuh hlawma. Keini, South leh East Asia region inkawp pawhin March thla khân Bangkok-ah meeting kan han nei ve a. General Assembly-a kal tûrte lo inhmêlhriat lâwkna leh a kalhmang tûr inhrilhfiahna hun atân hman a ni deuh ber.

**Jeju lamtluang:** Jeju thliarkâr chanchin leh a hmingthannate ka lo hre ngai lo hle mai a. Kan thalai lamte erawh chuan an lo hre hle hlawm chu niin. Kan kal tûr thu hriate pawhin “E he...!” an ti deuh zêl mai a. Google lam aţang tein ka han bih Chiang ve deuh va, Jeju thliarkâr chuan min hîpin kal ka châk ta hle a. Indira Gandhi International Airport, Delhi aţangin dârkâr sarîh zet kan thlawh hnuah Shanghai tum hmun nuam takah kan tum ta

vâng mai a. Hetah hian flight delay avângin dârkâr li zet kan châwl nghe nghe a. Chuta ţang chuan thlawhna bawkin Jeju thliarkâr chu dârkâr khat vêl lekah kan thleng thei ta. Volunteer fêl tak takin kan hming ngei ziaka târin Jeju tum hmunah min lo hmuak a, motor changkâng leh nuam tak hmanga kan thlenna tûr hotel changkâng, nuam leh ropui tak, Lotte Hotel min hruai thleng ta mai chu a va nuamin a va han thlamuanthlâk tehlu êm! Thlawhna lian tak hmanga dârkâr sarîh vêl zet vân boruak sâng taka kan thlawh chhông khân dârkâr hnih leh a chanve vêl muthilh nân ka hmang tih loh chu Thu leh Hla magazine leh Lêngzêm (May & June issue) chhiar nân ka hmang a, khawhar a hnêmin kalkawng tumtawi nân a tha hle.

Chu hotel nuam leh changkâng tak khual chhâwnna hmun (reception counter) kan thleng fêl chiah chu palai thleng hmasa zînga mi, nikum 2015-a PC Wales General Assembly nang tûr tâwka Goodwill visit neia kan zu tlawh tum a min lo hruai kual veltu Welsh nu Nan-i (Rev. Nan Powel Davies) chuan min lo hmu hmasa ber a, rin loh taka min hmu thut chu a lâwm

thiam bawka min rawn kuah chung chung mai a, mikhual ve tho mah ni se a thlamuanthlâk khawp mai. Tin, March thlaa Bangkoka Pre-Assembly meeting-ah khan East Asia lama ram hrang hranga mite nêh kan lo inhmêlhrat nual tawh a. Chûngte chu social media hmanga inbe pawp rengin Jeju-a inhmuh leh nghâkhlel takte kan inhmu leh hlawm chu a hlimawm ve khawp mai. Mi tinin that leh hawihhâwm kan chhuah tlâng bawk a, kan thlenna hmun leh a enkawl vêtuten an zir bawk nêh a boruak hi a zângkhai êm êm vek mai a ni.

**General Assembly chu:** He General Assembly-ah hian member kohhran pakhat aţangin palai 4 (voting member) zel tirh theih a ni a. Chûng zîngah chuan Hmeichhia leh Thalai aiawh pakhat ve ve tel nghâl tûr a ni. Chutiang chuan keini Presbyterian Church of India aiawh pawh 4 kan ni a. Tin, PCI aţangin hruaitu pawimawh, an mawhphurhna avânga kal ve pathum an awm bawk a. Chûng zîngah chuan Rev. Lalramliana Pachuau, kan Sr. Executive Secretary chu Nomination Committee Member a nihna angin a tel ve bawk. A pum

puiah chuan vote nei palai 132, vote nei lo palai 35, Resource Person leh khual pawimawh 18 leh a tûl apiang min buaipuitu (ram hrang hrang aţanga thlan chhuah steward) 15 nêh kan vai chuan 200 zet kan tling a ni. Hêng bâkah hian a thlengtu kohhran hruaitute leh an thawktu eng emaw zâtin min awmchilh deuh reng bawk.

### **Hun hman dân tângpui:**

General Assembly ţan hma ni hnih chhûng hi Youth Assembly atân hman ţhin a ni a, chu chu General Assembly programme-in a zui nghâl ţhin a. Tûn tumah pawh hian ram leh kohhran hrang hrang aţanga thalai aiawh palaite kha tlêma kal hma hretin thalai pualin hun hlimawm tak an lo hmang ho hmasa a ni.

Kan thlen tûk Inrinni chu nilengin Jeju thliarkâra hmun pawimawh leh nuam laite tlawhin thlîr vêl ni (sight-seeing) kan hmang a. A tûk Pathiannah group hrang hranga inţhenin Biak In 15 vêlah insem darhin chawhma kan inkhâwm a. Kan inkhawmna kohhranah theuh lunch kan ei nghâl vek bawk a. Tlai dâr tumah General Assembly hawmna inkhâwm (Inaugural service) chu ropui



takin Seongahn Jeju Kohhran Biak Inah kan nei ta a ni. A bâk programme dang zawng erawh chu kan thlenna, Lotte Hotel-ah vek neih a ni.

General Assembly mah ni se, rorêl boruak rit a awm ve lêm lo va. Devotion-a thusawi leh kan thupui huam chhûnga thupui then hrang hrang te, mi thiam tak takte kaihhruaia zir ho thin chu a hlâwm lian deuh ber a ni mai a. Kan hun hmanna hall pui berah hian dawhkân 35 zet, number pêk thlap veka dah a ni a. Chumi kîl ho tûr chuan a ram then leh kohhran inpawlh mawi tâwk tûra group siamin kan hming ziaka dah thlap vek a ni a. Devotion-a thu ngaihthlâk leh thupui kan zir ho te hi dawhkân khat kîl ho zâwng khân mahni dawhkân theuhvah sawi hona (table discussion) neih phawt hnuah Working Group (Table 2 zêl inkawp)-a sawi ho leh a ni thin bawk. Korean Cultural Nite mai bâkah keini khawvêl ram hrang hrang aţanga hnam tinrêng palai kal khâwmhoten Inter Cultural Nite hmanga mahni hnam incheina theuhva inthuama programme kan hmanng ho te khân boruak a tinuamin a tizângkhai hle bawk.

**Inthlanna:** General Assembly-a programme pawimawh tak pakhat chu inthlan hi a ni. Nomination Committee member-te kaihhruainaa neih a ni a. Nomination Committee member tlêm tê zînga PCI aiawha kan Mizoram Synod hotupa Pu Rama a thu ve vuah mai chuan thla a timuangin a chhuanawm hle. Moderator leh Treasurer te hi palaiten secret ballot-a thlan a ni a. Moderator atâna candidate pathum zîngah PCI nominate, Rev. D.C. Haia Darnei (Biateram Synod) a tel ve avângin kan thiam ang angin tan kan la ve a. Pathian zârah Pu Haia chu kum 2016 - 2020 thlenga Moderator atân thlan tlin a ni ta hlauh mai a. Khawvêl huap hetiang pâwl ropui taka Moderator han nih chu PCI mai bâkah zohnahtlâk pum pui tân pawh thil hlu leh chhuanawm tak a ni ve hrim hrim a ni.

**Report tawi leh a rah chhuah:** Region hrang hrang aţanga kohhran tinten mission lama kan rawngbâwlna report tawi minute hnih theuh kan sawi a. PCI chanchin leh dinhmun tlangpuite power point hmanga report-in, Synod hrang hrangte missionary tih chhuah belh khâwm han sawite chu a nuamin ropui an ti

hle mai a. Chûng zînga thawh hlâwk ber, Mizoram Synod rawngbâwlina zînga tlâwm tak, Buhfaithâm leh Thingfâk Missionary hmanga sum kan tuak dân te, chhûngkaw tin kan tan ho dân te leh chumi sum tling khâwm hmanga rawngbâwlina ropui tak kan nei theite chu video ngeia târ langin thiam ang tâwkin kan sawi uar ve bawk a, chu chuan palai tam tak thinlung a khawih a, chibai pawh ka dawng nasa ve hle a ni. Chibai liam satliah mai lova la fuh zual an awm nghâl a. Uniting Presbyterian Churches in Southern Africa (UPCSA)-a General Secretary, Rev. Lungile Mpetsheni chuan, “Ka unaupa” tia min vuanin ka bulah a tâp ta chawt reng mai a. “Mizoram Synod rawngbâwl dân hi hriat mai kan duh tâwk lo, a hmuna rawn hmuha zir kan duh a ni, a kawng min zawnpui rawh,” tih chu a thupui ber a ni ta mai a. Chutiang kawng zawn chu ka phûr zâwng tak a lo ni bawk a, kan Mizoram Synod hruaitute hnênah ka thlen thuai a. Chuta òang chuan kan hotute biak pawh dân tûr ka hrilh hnuah direct-in an dâwr chho ta zêl a. Chumi rah chhuah kal zêlah chuan UPCSA (Africa chhim

tâwp) aţang hian Mizoram Synod rawn tlawha kan rawngbâwlina te rawn zir tûrin kumin 2016 November thla tâwp lam hian lo kal tûrin programme an siam ta nghe nghe a ni.

**A thlengtute an fakawm:** A thlengtute Presbyterian Church of Korea (PCK) hian an thleng hneh hle mai a, a hmunhmain a zir bawk nêh engkim a felfai òah mai. Rin leh beisei aia òa leh fel hlîr mai chuan mit leh rilru a tihahdam khawp mai. Kan thlenna hotel hi a ropuiin a nuam a, a changkângin a changtlung a, a hmingthang hle bawk a. Korean film tam takah pawh lang òhîn leh tam tak phei chu an channa hmun pui ber pawh a ni nghe nghe. Ram hrang hrang aţanga òhalai rual fuan khâwm te khân zan lam hun thâwla tui chên ho kha an thlâkhlelh ber pakhat a ni âwm e.

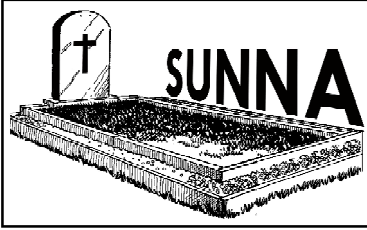
**Thliarkâr lungkuai Jeju chu:** Jeju thliarkâr chanchin hrim hrim pawh hi sawi thui deuh a châkawm hle. Japan awp behna (Japan military colonialism) hnuai a rethei taka awm òhîn, tâl chhuak tûra an beih dân ngaihnaawm leh an tuarna râpthlâk tak te chu an thinlungah

a la ch m reng a. Ch ng hriat rengna t ra an siam Peace park chh ng Museum-a an thil ent r te chuan rilru a khawih a, thilungah a ch m reng mai. Vawiina thliark r mawi leh nuam, an ram economy pawh chawik ng khawpa khawv l ram hrang hrang a anga khualzinte h p l ttu lo ni ta buatsaih n n khian nunna hlu tam tak an lo hl n a, tuarna r phtl k tak tak hmanga an din chhuah a lo ni reng mai. Jeju  m hmun (airport) siamna t r lei an laih lai te khian a hun laia ph m  at pawh hlawh lo mi tam tak ruhro hai chhuah a ni asin. An hun kal tawh hre rengin a mi ch ngte khian remna leh muanna an ngai thupui hle mai a. America leh Korea sawrk rin lawng sipai hmunpui (Naval base) at na an buatsaih m kte pawh duh lovin an dod l ve m k bawk. Tin, North Korea n n inpawh taka an inrem leh hun hi mi tinin an ngh khl l a ni.

**CWM programme-ah zohnah thl kte:** He inkh wmpuiah hian zohnahthl k inkh wm hlim tham kan awm ve tlat mai. Keini PCI a anga kal te, CWM hnuai PCI missionary te z nga pakhat, Rev. Z. John Mals wma Colney, Wales ram a anga lo kal leh

Myanmar lam palai  enkh tte n n Mizo  awng ngeia inkh wm hlim tham mi pariat kan awm a, Jeju thliark ra mahni  awng mai ni lo, kan hnam incheina thuam famkima inthuam thei hei z t han inhmuh kh wm chu nuam danglam ve tak a ni.

Kan h wn lamin Shanghai  m hmunah duh aia rei kan ch wl a. Delhi pana kan thlawh chhuah lehna t r a remch n loh thut av nga flight cancel te chu a hun laiin hrehawm hle mah se, Shanghai khawpui hotel nuam taka kan riah theihna hun remch ng a lo ni ta z l a. A t k z nga kan chhuah leh d wnin Shanghai  m hmuna thlawhna chh nga thut fel hnuah ruahpui v n wn a s r tluk tluk mai a. Flight cancel leh mai hlauth wng taka d rk r li zet kan  tut hnuah New Delhi pana thl wk chhuak t r kan che  an ta mai chu l wmin kut kan b ng dar dar a ni. New Delhi a ang chuan India ram a anga kal dangte n n kan in en darh ta hlawm a. Harsatna tam tak awm thei k rah Pathian hruaina ropui tak dawngin CWM inkh wmpui chu hmang zovin him takin mahni hmun kan thleng thei  euhva a l wmawm hle a ni. Min hruaitu Lalpa ropui ber rawh se.



## UPA NGÛRKHAMA THAKTHÎNG VÊNG



Upa Ngûrkhama (85), Pu Thangliana leh Pi Chawngi te fapa hi September ni 16, 1930 khân Mauzâmah a lo piang a. Ni 27.1.1957 khân Hauzîki nêen an innei a, fa paruk an nei. Kum 1998-ah a nupui hian a thihsan avângin ni 8.7.2008-ah Vânlalchhûngi nêen an innei leh.

Kum 1970-ah Tual Upa atân thlan a ni a, kum 1972-ah Upa atân thlan a ni leh a. Kum 1973 khân Chhimphei Presbytery Inkhâwmpuiin Thakthîng Vêng Kohhran Upa atân a nemnghet a. Kohhranah Chairman, Secretary, Treasurer, SS Supdt., Ramthar Chairman leh chanvo hrang hrang a chelh tawh.

Bial Chairman leh Secretary a ni tawh a, committee hrang hrangah a tel tawh. Presbytery Standing Committee, Pastoral leh Nomination-ah te a awm tawh a. Synod Ramthar Board Committee-ah a tel tawh bawk.

Ramthar rawngbâwlina ngai pawimawh tak a ni a, Diptinibast, Karimganj leh Chachar-ah Missionary-in a thawk tawh bawk. Aizâwl Theological College-ah Hindi Teacher hna a pension thlengin a thawk. Kristian Tlângau leh Ramthar chanchinbu agent-ah kum 30 chuang tângin, a thih ni thlengin agent a ni a, agent tâng rei chawimawina a dawng ve ve tawh a ni.

March 2015-ah a pumpui cancer hmuh chhuah a ni a, t̄ha taka zai a ni a, t̄ha hlen t̄ura beisei a nih laiin March 4, 2016 khân Lalpa hnênah min kalsan ta a ni. A t̄ukah amah thlahna hun in lamah Bialtu Pastor F. Lalrin-nungan a hmang a, Biak Inah Upa Chhâwnvunga, Aizâwl Chhim Presbytery Moderator-in a vui leh a. Kohhran zaipâwl, Minister leh Upate leh kohhran mipui t̄hahnem takin ui takin kan thlah liam ta a ni.

- *Upa L.P. Lalrinmawia  
Thakthîng Vêng Koh. Ziaktu*

**UPAZALÂWMA  
AIBÂWK**



Upa Zalâwma (81), Pu Huallianthanga (L) leh Pi Kâphleii (L) te fapa hi kum 1935 khân Arte khuaah a lo piang a, Challiani nêan innei a, fâ pahnih an nei.

Kum 1987 khân Chhim-thlang Presbytery Inkhâwmpuiin Arte Kohhran Upa atân a nemnghet a. Kohhranah chanvo hrang hrang a chelh tawh a, khawtlâng rawngbâwlna lamah pawh a inhmang hle.

Kum 1995 khân Aibâwkah a lo pêm a. Kohhranah rawngbâwltu rinawm tak a ni a. A bîk takin Ramthar rawngbâwlnaah a tui hle. A dam pawt chuan Bial leh Presbytery Inkhâwmpui a thulh ngai lo.

Pa hrisêl tak a ni a, damlo kan peih mi tak a ni bawk. Akum a lo upat tâk hnu hian a bawrhâwmsâwm ve òan a. Pum nâ

leh thâwk lam fel lo avângin damdawi inah enkawl a ni a. Tha chhuak leh mai tûra beisei a nih laiin 14.3.2016 khân Lalpa hnênah min kalsan ta a ni. A tûkah Bialtu Pastor H. Lalawmpuian a vui a, kohhranhoten ui takin kan thlah liam ta a ni.

*- Upa H. Vânlalruala  
Aibâwk Kohhran Ziaktu*

**UPA C. RUALHLEIA  
REPUBLIC VÊNG**



Upa C. Rualhleia (86), Pu Rokhama Chhangte Dârchhun leh Pi Zachhîngpuii Hnamte te fapa hi ni 15.4.1930 khân Tachhîp khuaah a lo piang a, Chalzâwni nêan ni 1.3.1957 khân an innei a, fa pariat an nei.

Upa C. Rualhleia hi kum 29 chauhvva upa a nih laiin Tachhîp Kohhran Tual Upa atân thlan a ni a. Kum 1960-ah Chhimphei Presbytery Inkhâwmpuiin Tachhîp Kohhran Upa atân a

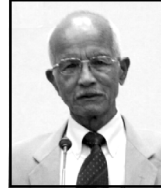
nemnghet a. Sateek-a an pêm hnu, 1971-ah Kohhran Upa atân thlan nawn a ni a. Kum 1979-ah Aibâwk Kohhran Preaching Station chu kohhran puitlinga hlân kai a nih avângin indanpuitu Upa a ni a, Aibâwk Kohhran Upa a ni leh bawk. Presbytery Moderator leh Bial Chairman a ni tawh a, kum 23 chhông Bial puipaah a awm. Synod Education Board-ah term hnih a awm a. Nupa tuak 35 a inneihtîr bawk. Kum 1995-ah Republic Vêngah a rawn pêm a, Pêm Upa niin kohhran rawngbâwltu pawimawh tak a ni zui zêl.

Kum 2001 khân lung (heart) tha lo avângin phaiah kalpui a ni a, dam takin a lo haw leh a. Kumin kum tîr khân a thâwk lamah harsatna a neih avângin damdawi inah enkawl a ni leh a, ni 15.3.2016 khân Lalpa hnênah min kalsan ta a ni.

A tûkaha a chênna in leh thlânmuallah Rev. Zoramsângan a vui a, ui takin kan thlah liam ta a ni.

- *Upa C. Lalchharliana*  
*Republic Vêng Kohhran*  
*Ziaktu*

## UPA LALHLUTA HUNTHAR



Upa Lalhluta (87), Upa Suaksailova (L) leh Rolûti (L) te fapa hi October 20, 1929 khân Khawhaiah a lo piang a. January 20, 1964-ah Lalnun-mawii nên an innei a, fa panga an nei.

Kum 1990-ah Hunthar Vêng Preaching Station chu kohhran puitlinga hlân kai a nih khân Treasurer a ni a. Kum 1991-ah Upa atân thlan a ni a, hemi kum vêk hian Aizâwl Presbytery Inkhâwmpuiin Hunthar Vêng Kohhran Upa atân a nemnghet a. Chanvo hrang hrang hetiang hian a lo chelh tawh - Kohhranah Chairman, Secretary leh Treasurer; Bialah Chairman, Treasurer, Nomination leh Standing Committee member; Presbytery-ah Nomination leh Standing Committee member; Synod-ah Communication Board member. Inneihna kawltu a ni tawh a, nupa tuak 63 a inneihtîr.

Pa hrisêl tak a ni thîn a, tlêma a kum a lo upat deuh hnuah a zun a rawn thi a, phîng cancer a ni tih hmuh chhuah a ni a. A kum a lo upat deuh tawh avângin zai ngam a ni ta lo va, a phînga bâwk awm chu ziah fâi a ni ta a ni. Theih ang anga enkawl chhunzawm zêl a ni a, a natna chuan zual lam pan zêlin April 3, 2016 khân Lalpa hnênah min kalsan ta a ni.

A tûkah amah thlahna hun in lamah Rev. J. Vânlalhnûnan a hmang a, Biak Inah Bialtu Pastor, Rev. Vânrôluahan a vui leh a, Kohhran Zaipâwlin thlahna hla an sa a, ui takin kan thlah liam ta a ni.

- *Upa T. Vânlâwma*  
*Hunthar Kohhran Ziaktu*

## UPAROPIANGA SAMTLÂNG



Upa Ropianga (90), Pu Zaichhîngkhûma (L) leh Pi Mâmtei (L) te fapa hi ni 5.2.1926-ah Samtlângah a

piang a. Kum 1947-ah Khuangtuahchhûnginên an innei a, fa pali an nei. Anupui hian kum 2012 khân a thihsan a ni.

Kum 1965-ah Chhimpei Presbytery Inkhâwmpui in Samtlâng Kohhran Upa atân a nemnghet a. Kohhran Secretary leh SS Suptd. hna te a chelh tawh. Sunday School zirtirtuah kum 50 a tâng tawh a, kum 2015 khân kum 50 chhûng Kohhran Upa a nih chawimawina hlan a ni bawk. Bial leh Presbytery Committee member pawimawh tak a ni tawh thîn a, Bible Society life member a ni bawk.

Kum 2014 a tâng khân chak lohna hrnag hrangin a tlâk buak a, natna han sawi bik tûr awm lovin April 7, 2016 khân thutthlênga a mu chu harh chhuak leh lovin hahdam takin Lalpa hnênah min kalsan ta a ni.

A tûkah amah thlahna hun in lamah Bialtu Pastor, Rev. Lalsângmuanan a hmang a, Biak Inah Upa Chhâwnvunga, Aizâwl Chhim Presbytery Moderator- in a vui leh a, kohhranhoten ui takin kan thlah liam a ni.

- *Upa R. Lalchungnunga*  
*Samtlâng Kohhran Ziaktu*

**UPA R. LALAWIA  
BÂWNGKÂWN EAST**



Upa R. Lalawia (66), Pu Sâpliana (L) leh Pi Chhonzîki (L) te fapa hi April 4, 1950 khân Vânzauah a piang a. September 25, 1976-ah Lalunnêmi nê an innei a, fa pathum an nei. Anupui hian July 15, 2015 khân a thihsan a ni.

Kum 2007-ah Tual Upa atân thlan a ni a, kum 2009-ah Upa atân thlan a ni leh a, a kum leh 2010-ah Aizâwl Hmâr Presbytery Inkhâwmpuiin Bâwngkâwn East Kohhran Upa atân a nemnghet.

Synod Inkhâwmpuiaah a palai tawh a, Tualchhông Kohhranah Vice Chairman, Treasurer (Synod sum), SS Suptd. leh Asst. Suptd., Finance leh Building Comt. Vice Chairman, Ramthar, Social Front, Kristian Chhôngkua leh Masihi Sangati Committee-ah te Chairman hna a chelh tawh.

Kum 2010 vêl atang khân zunthlum natnain a tlâk buak a, natna dangin a belhchhah zêl avângin April 8, 2016 khân Lalpa hnênah min kalsan ta a ni.

A tûkah amah thlahna hun in lamah Bialtu Pastor, Rev. Vânlalmuanpuia Khiangtein a hmang a, Biak Inah Aizâwl Hmâr Presbytery Moderator, Rev. J. Lalremsiaman a vui leh a, Kohhran Zaipâwlin thlahna hla an sa a, ui takin kan thlah liam ta a ni.

- *Upa C. Vânlalawmpuia  
Bâwngkâwn East Kohhran  
Ziaktu*

**UPA ZAKHÛMA  
KHUALEN**

Upa Zakhûma (82) hi kum 1934 khân Khualenah a piang a, ni 14.6.1958-ah Thankhûmi nê an innei a, fa pariat an nei.

Kum 1983-ah Upa atân thlan a ni a, a kum leh 1984-ah Tuichông Presbytery Inkhâwmpuiin Khualen Kohhran Upa atân a nemnghet a. Kohhran Chairman, Inneihna kawltu, Treasurer (Tualchhông leh Synod sum), SS zirtîrtu hna te a thawk tawh.



Kum 2011 aţang khân Asthma natnain a tlâk buak a, kohhrana a mawhphurhna duh angin a thawh theih loh phah a ni. Anatna hian a kiansan lo va, pum nain a tlâk buak zui leh a, ni 9.4.2016 khân Lalpa hnênah min kalsan ta a ni.

A tûkah amah thlahna hun in lamah Bialtu Pastor, Rev. C. Vânlalmalsâwman a hmang a, Biak Inah Tuichâng Presbytery Moderator, Upa F. Lalzîkan a vui leh a, Kohhran Zaipâwlin thlahna hla an sa a, ui takin kan thlah liam ta a ni.

- *T. Upa K. Ramchullova*  
*Khualen Kohhran Ziaktu*

### UPA PC LIANHRIMA MUALPHÊNG



Upa PC Lianhrima (61), Pu Saitawka leh Pi Zachhîngpuii te fapa hi April 13, 1955 khân Mualphêng khuah a piang a. October 15, 1977-ah Sâpzui-thangi nêan an innei a, fa pali an nei.

Kum 1981-ah Hmârchhak Presbytery Inkhâwmpuii Mualphêng Kohhran Upa atân a nemnghet a. Kohhranah rawngbâwlhna hrang hrang - SS zirtîrtu, SS Suptd., Innehna kawltu, Building Comt. Vice Chairman, Kohhran Secretary hna te a chelh a. Bialah Chairman, Secretary leh Treasurer a ni a, Presbytery-ah Sub Pastoral, Nomination leh Standing Committee member a ni a, Statistician a ni tawh bawk. Synod-ah Music Committee-ah term hnih, SEC-ah term khat a tel tawh bawk.

Kum 2010 aţangin zunthlum natnain a tlâk buak a, chu chuan a mit leh kal tichhiain phai lamah wawi eng emaw zât an kal a. A that chhuah theih loh avângin April 13, 2016 khân Lalpa hnênah min kalsan ta a ni.

A tûkah amah thlahna hun in lamah Bialtu Pastor, Rev. K. Lianmûngan a hmang a, Biak Inah Tuivawl Presbytery Moderator, Upa Lalbiakzauvan a vui leh a, Kohhran Zaipâwlin thlahna hla an sa a, ui takin kan thlah liam ta a ni.

- *H. Lalthlengliana*  
*Mualphêng Kohhran Ziaktu*

**ADVERTISEMENT FOR COURSES OF STUDY**

The following courses will be offered in Aizawl Theological College for the coming Academic Year of 2017 – 2018.

1. Diploma in Clinical Pastoral Counseling (DCPC): One-Year Course  
Required qualification: B.A. & its equivalents and above  
Entrance Exam: January 18, 2017 at 9:30 AM  
Interview by the Board: January 20, 2017 at 10:30 AM
2. Bachelor of Divinity (B.D.): Four-Year course  
Required qualification: B.A. & its equivalents and above  
Entrance Exam: February 08, 2017 at 9:30 AM  
Interview by the Board: February 10, 2017 at 10:30 AM
3. Master of Theology (M.Th.)  
Required qualification: B.D. (B Grade and above) or those who qualified themselves from the Senate of Serampore College for the concerned subject in the following disciplines: Old Testament, New Testament, Christian Theology, History of Christianity, Missiology, Religions and Christian Ministry (Counselling).  
Entrance Exam: January 18, 2017 at 9:30 AM  
Interview by the Concerned Department & Faculty: January 19, 2017 at 10:30 AM  
Interview by the Board: January 20, 2017 at 10:30 AM
4. Bachelor of Theology (B.Th.) Hindi: Four-Year course  
Required qualification: HSLC (Hindi)  
Documents: HSLC (Hindi) Certificate, Marksheet, Church Recommendation, Passport size photo 1 copy  
Entrance Exam: January 18, 2017 at 9:30 AM  
Interview by the Board: January 20, 2017 at 10:30 AM
5. Bachelor of Divinity (B.D.) (Hindi)  
Required qualification: HSSLC for Five-Year course & B.A. for Four-Year course.  
Documents: HSSLC/B.A. Certificate, Marksheet, Church Recommendation, Passport size photo 1 copy  
Entrance Exam: January 18, 2017 at 9:30 AM  
Interview by the Board: January 20, 2017 at 10:30 AM
6. Doctor of Theology (D.Th.)  
Required qualification: M.Th. B Grade & above with CET passed in

New Testament, Christian Theology, Missiology  
Departmental Interview: January 19, 2017 at 10:30 AM  
Interview by the Board: January 20, 2017 at 10:30 AM

Application forms for the above (Nos. 2-6) courses and the College prospectus could be obtained from ATC Academic office on payment of Rs 10/- for Hindi B.Th/B.D., Rs. 100/ for B.D. & DCPC, Rs. 150/- for M.Th. and Rs. 200/- for D.Th. or from the College web-side. Duly filled in form must be submitted to the Academic Office on or before December 16, 2016. (with late fee of Rs. 50/- on or before January 6, 2017). Those who obtain application forms from the college website should do the payment at the time of interview.


Sd/-  
(REV. DR. C. LALHLIRA)  
Principal

For more information please contact - 03892361139/  
03892361664 or see: [www.atc.edu.in](http://www.atc.edu.in)

---

## TIHDIKNA

Pastoral Ministry Kaihruaina phêk No. 46-na, Nambar VI Chhiatni thatni Kaihruaina A.1-a **'Mitthi dâr vuak'** tih tlar tâwp bera 'Mahni intihlumah chuan mitthi dâr vuak loh tûr a ni' tih hi siam that hmaih palh a ni a. Kum 2015 Synod Gen. 4-na thu, *'Mahni intihlum an awmin Biak In dâr vuak ni tawh rawh se, kan ti a, hei hi hman ngâl tûr a ni e'* tia rêl bawh zuia dâr vuak zêl tawh tûr a ni tih kan inhriattîr tawh ang khân kalpui zêl tûr a ni e (Ref. MS/GEN-46/2016/21 Dt. 18.01.2016). Hei hi Pastoral Ministry Kaihruaina Bu chhut tharah dah dik tûr a ni a, lo tih hmaih palh liau liau a ni. Kohhranhote hriat thiamna kan ngên ngâl e.



(UPA H. RONGHAKA)

Secretary  
PCI, Mizoram Synod

To,



**PCI Logo lian:** Biak In hmaia kan târ ang chi Presbyterian Church of India (PCI) Emblem, tuiëk thei lo tûra Aluminium hmanga chhûn, rawng ða ber chi hmanga thum chu a lo thleng thar leh ta. A hmaa mi kha tam tak duh aia a têt deuh avângin tûn juma mi chu a lai hawhthlang feet thum a ni ta e. Hmangaih kal tate hriat reng nâna kohhrana pe duh tân pawh thil pêk remchâng tak a ni ang. Pakhat ₹35,000 man a ni.

### THLARAU THIANGHLM ZIRTÛRNA AW - VIII:

Ringtute nunah hian hmêlmapa Diabola hi a inrawlh theih vek avângin kan hmêlmapa chu tu nge a nih? Eng hmanraw hmangin nge min beih thin a, engtia lo dodâl tûr nge ni ang? Thlarau lam ðan lenna leh puitlinna kawnga hruaitu tûr lehkhabu ða tak Dr. PC Lianhmingthanga ziaik hi rawngbâwtute tân hmaih phal chi a ni lo. A man ₹150



**STREAMS IN THE DESERT VOL-1:** Kan kut lehlamin khawvêl a hûm a, lehlamin Pathian thu, thlarau lam thil a la hûm cheu bawkna khawvêlah hian kan duhthlanna siam chian a hun ta. Pathian min buatsaih tumna kan tihhlawhchham loh nân, Pathianin a buatsaih tumte chu TUARNA leh FIAHNA a paltiangtûr thin. Chutiang mite tâna ðanpuitu ða tak a ni e. F. Malsâwma lehlin ₹250 man a ni e.

Published by Rev. Dr. C. Chawngmingliana at Aizawl, Mizoram on behalf of MIZORAM PRESBYTERIAN CHURCH. Typeset by SL & PB and Printed at the Synod Press, Aizawl - 796 001, Mizoram.

Copies - 37,500