

ESTD: October 1994
THLA TIN CHHUAQ CHANCHINBU
Kum khat lâk man ₹50

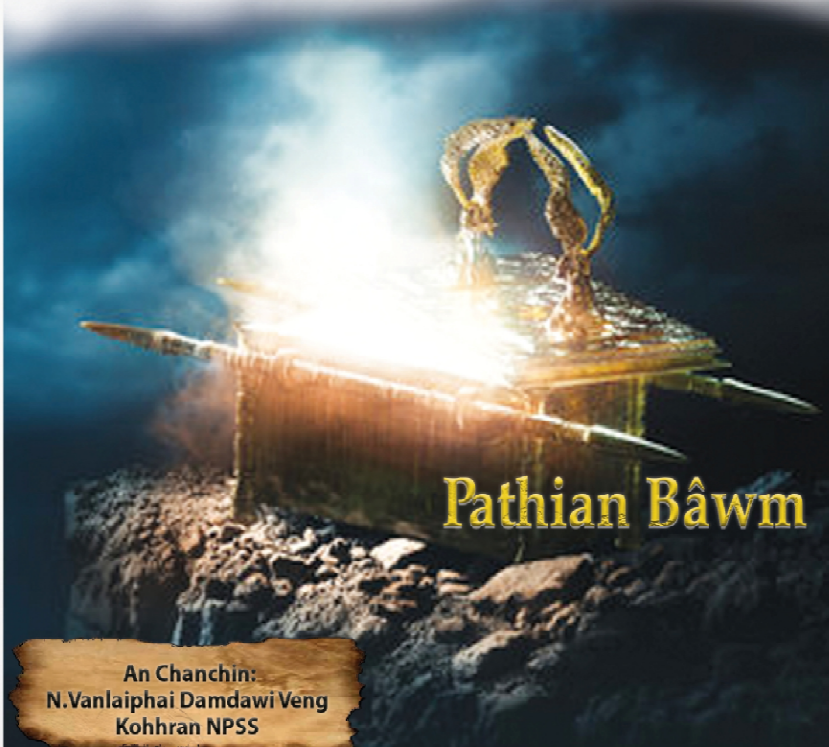
FEBRUARY 2026

Postal Registration No. MZR/70/2024-2026
RNI Registration No. 66996/96

Kristian Naupang



Vol. 31 No. 5



Pathian Bâwm

An Chanchin:
N.Vanlaiphai Damdawi Veng
Kohhran NPSS

- ENG LAM NGE KAN ZIR ANG? (CAREER PLANNING)
- RORÊLTU TLANGVÂL HAUSA
- THUTHLÊNG RUAK
- CHAGALETI NAUPANGTE LIBRARY: NAUPANGTE SIAM LEH ENKAWL

Kum 31-na

February 2026

Bu 374-na

Editor

Zohmangaiha

Managing Editor

Rev. PB Zosaphara

Joint Editors

Rev. K. Zonunsanga

Rev. Dr KM Vanlalpeka

F. Vanlalrochana

Eric Lalnunmawia

Circulation Manager

Lalfakzuala

Kristian Naupang

Synod Office, Second Floor

Mission Vêng, Aizâwl - 796001

email: kristiannaupang@gmail.com

Mobile: 6909132893

A man pe duh leh a bu la duh chuan

Circulation Manager hriatûr tûr a ni.

Kum khat lâk man ₹50

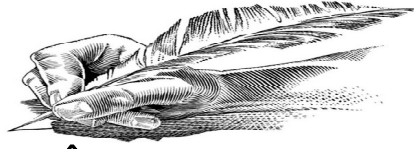
Kristian Naupanga thu chhuabte hi Editor ngaih dân a ni vek kber lo.

A chhônga thu awmte

Phêk

1. Editorial1
2. Eng lam nge kan zir ang? (Career planning) 2
3. Rorêltu tlangvâl hausa5
4. T̄hutthlêng ruak7
5. Pathian bâwm9
6. Chungûin lal an dil thu14
7. Hlimpuii hlimna17
8. Mother Language Day20
9. An Chanchin: N. Vanlaiphai Damdawi Veng Kohhran NPSS.....	22
10. Hriat zauna24
11. Hmutheitua28
12. Thawnthu inphuahsiak hriattîrna29
13. Quiz30
14. Chei rawh le!31
15. Ka hmuh ang hmu thei rawh32

Editorial



TAIHMÂKNA

‘Taihmâkna’ awmzia kan hria em aw? Thil tih tûr tûl emaw, thawh tûr tûl emaw tih/thawh reng peihna, phûr taka tih/thawh theihna, a hrehawm deuh châng pawha tih/thawh hrâm hrâm peihna hi taihmâkna chu a ni. Taihmâk hi a pawimawh êm êm a. Mi taimâte chu an hlawhtling nge nge thîn.

Kristian naupang leh tleirâwlte hi kan taima tûr a ni. Puitlingte angin ei zawнна hna la thawk ve chiah lo mah ila, kan hna ve ber lehkha zirah hian taihmâk kan chhuah a pawimawh êm êm a. Lehkha zir taimâte chuan lehkha an thiamin, kawng hrang hranga chhawr ẵngkai tlâk an ni thîn. Kan nu leh pate leh kan pi leh puten, “Lehkha zir rawh!” tia min tur reng ngai lo tûrin, lehkha zir hi kan hna ve, kan mawhphurhna a ni tih hriain taima takin i zir zêl ang u.

Kan in chhûngah pawh kan tih ve theih tâwk tiin kan nu leh pate leh kan chhûngte taima takin kan pui ve thîn tûr a ni. Kohhranah leh khawtlâng thilah te pawh kan tih ve theih tâwk, kan tih/thawh ve tûra ruahman a awm châng te pawh a awm thîn. Chutiang thawh tûr a awm châng pawh chuan taima takin, rin tlâkin kan thawk thîn tûr a ni.

Kristian naupang leh tleirâwlte chu kan inkhâwm taima tûr a ni a. Kan inkhâwm chuan ninhlei mai lovin, taima takin thusawi kan ngaithla ang a, zai hunah uar takin kan zai thîn dawn nia. Bible leh lehkhabu ẵa dang chhiar taihmâk hi Kristian naupang leh tleirâwlte tih tûr, hma kan sâwn zêlna atâna thil pawimawh tak a ni bawk.

Kan Pathian hi Pathian taima, hna thawk reng mai a nih avângin amah ringtute hi kan taima ve tûr a ni. Mi taimâte chuan malsâwmna an dawng thîn a ni.

ENG LAM NGE KAN ZIR ANG? (CAREER PLANNING)

Zir tûr leh tih chhonzawm zêl tûr ruahmanna siam (career planning) hi zir laite chauh pawh ni lo, mi tin tâna thil pawimawh a ni a. Ngun taka ngaihtuaha mahni tih tûr leh zir tûr thlan fuh chuan kan hma lam hun a ða zâwngin a hril thui thei hle.

Zir tûr leh tih chhonzawm zêl tûr ruahmanna siam hma hian nasa takin kawngro a su thei a. Zir laite tân chuan a pawimawh êm êm a ni. High school kan kal ðan tîrh aţang hian kan zir tûr leh kal zêlna tûrkan ruahman a pawimawh hle. Kum 12 kan nih vêl aţanga tum mumal tak kan neih chuan pâwl X kan zawh hnua kan zir lehtûr thlannaah min pui thei a. Pâwl XI-ah chuan a tlângpuiin stream lian tak thlan tur hlâwm thum a awm a, chûngte chu: arts stream, science stream leh commerce stream a ni. Kan stream thlan hian kan kal zêlna tûr kawng a sial dâwn a ni.

Engtin nge ruahmanna chu kan siam ang?

Rahbi 1-na – Mahni inhriat chian: Thil pawimawh hmasa ber chu mahni inhriat chian hi a ni. Mahni miza te, khawsak phung te, chakna te, thiam zâwng te, tui zâwng te, sum lah pai dinhmun te leh adt. hi hriat chian hmasak a pawimawh a. Keimahni mize mil zawng azir zêla career thlan hi

a pawimawh êm êm a ni. Mi ðhenkhat chuan ðhiante tih a nih avângin emaw, sum neih avâng ngawtin emaw, nu leh paten zir rawh an tih avângin emaw an zir tûr an thlang ve mai ðhîn a; an tuina a lo nih si loh avângin an hlawhchham fo ðhîn. Mahni inhriat chian phawt hi a pawimawh hmasa ber a ni.

Rahbi 2-na – Tum neih: Kan thiamna leh kan theihna azirin tum mumal tak neih a ðha. Lehkha thiam thei tak pawh, tum a neih loh chuan tuifinriata lawng khalhtu nei lo ang maiin a ðên kual a ðên kual mai dâwn a ni. Chuvângin, tum mumal tak kan neih a pawimawh a ni.

Rahbi 3-na – Zir tûr/Nih tûr hriat: Tum mumal tak kan nei a nih pawhin, kan zir tum/nih tum chu tûnah eng ang chiah nge a nih tih ngaihvena, a chinchâng hriat a ðha. Zirlaite tân hian zir tûr leh duh thlan tûrtam tak a awm a, chûng thlan tûr tam takte chu kan thlang vek thei lo. Duh thlan tûr awmte chu Chiang zâwka zira, a zir dân kalphung te, a rei zâwng te, chu thil kan zir chuan hna eng ang nge thawh theih tih te leh kan mizia nêh a inmil leh mil loh te thlenga zir chian a ðha.

Rahbi 4-na– Thutlûkna: Thlan tûr chi hrang hrangte kan zir chiana, uluk taka kan ngaihtuah hnuah mahni mil zâwng nia kan hriat zir tûr/tih tûr chu thlan fel chauh tûr a ni. Kan duh kan thlan fel hnuah chuan ruahmanna fel siama, kan zir theih

ngeina tûra ãan lâk zui tûr a ni. Mi tam tak chuan a chung a kan sawi ang a ti lovin, ruahhanna nei mumal lovin zir tûrte an bawh tawp a. Mahni tui zâwng leh chem kalna lam ngaihtuah lovin, a awm remchâng apiang an zir a; nimahsela, thiamna leh tuina tak a awm loh chuan buaina leh hlawhchhamna a thlen fo ãhîn. Chuvângin, thiamna ril zâwk nei tûr leh hlawhtling tûr chuan naupan lai aãanga tum mumal tak neiha, chumi tihlawhtling tûr chuan ãha taka inbuatsaih a ngai a ni. Zirna kawng thlan fuh loh palh hi hlawhchhamna thlentu a ni thei a; hlawhchham phah kher loh pawhin, tui tak leh nuam ti tak zir/thawh a har a, nih tûr ang a nih loh phah theihna a ni.

(Adapted from Career Information Booklet. Aizawl: Educational and Vocational Guidance and Counselling Cell, SCERT, Mizoram, 2019.)

HRIAT ATÂN

1. Kristian Naupang agent, copy 10 chin lâte hnênah a thlâwnin copy 1 pêk ãhin a ni a. Sub-agent-te hnênah erawh chuan, copy 30 chin semte hnênah copy 1 a thlâwna pêk a ni thung.
2. Chanchinbu man hi a kum chhûng zêla pêk tûr a ni a. Entîr nân, kum 2026 lâk man chu kum 2026 chhûngin pêk tûr a ni.

Circulation Manager
Kristian Naupang

RORÊLTU TLANGVÂL HAUSA

Matthaia 19:16-30; Marka 10:17-31;

Luka 18:18-30

Ni khat chu, rorêltu tlangvâl hausa tak mai hi Isua hnênah a rawn kal a, Isua hnênah chuan, “Zirtîrtu ðha, chatuana nunna ka chan theih nân eng nge ka tih tûr?” a ti a. Isua chuan, “Engati nge ‘ðha’ mi tih? ðha chu pakhat chauh a awm, chu chu Pathian a ni. Nimahsela, chatuana nunna neih i duh chuan, Pathian dânte chu zawm ta che,” tiin a chhâng a.



“Engte nge ka zawm tûrte chu?” a ti a. Isuan, “Tualthat suh. Uire suh. Ru suh. Bum suh. I nu leh i pa chawimawi rawh, tih leh nangmah i inhmangaih angin i vêngte hmangaih rawh’ tihte hi,” a ti a.

Nimahsela, tlangvâl chuan, “Chûng dân zawng zawng chu ka naupan têt ata ka zawm zêl ðhîn. Chatuana nung tûrin eng nge ka la tih ngai?” a ti a. Isuan amah chu a en a, a hmangaih ta a.

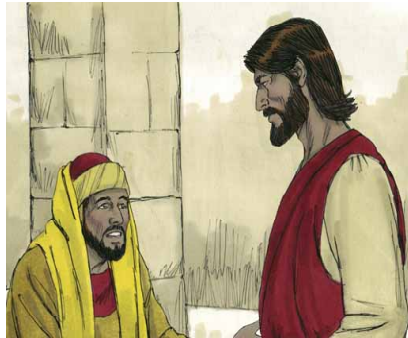
Isuan a hnênah, “ðha famkima awm i duh chuan, kal la, i thil neih zawng zawng hralh la, sum chu pachhiate hnênah pe rawh, chutichuan, vânah ro i nei ang. Tin, lo kal la, mi zui ang che,” a ti a.

Isua thusawi chu a hriatin tlangvâl hausa chu a lungngai ta êm êm a. Mi hausa tak a ni a, a thil neih zawng zawng sem ral chu a phal loh vâng a ni. A inher a, Isua hnên ata a kal bo ta a.

Tin, Isuan a zirtîrte hnênah, “Mi hausa tân Pathian rama luh chu harsa tak a ni. A ni, mi hausa Pathian rama luh aiin sanghawngsei hriau bengaluh tlang a awl zâwk,” a ti a. Zirtîrten Isua thusawi chu an hriatin mak an ti êm êm a, a hnênah, “Tu nge chhandam ni thei ang le?” an ti a.

Isuan a zirtîrte chu a en a, an hnênah, “Chu chu mihring tân tih rual a ni lo va; nimahsela, Pathian nêchuan engkim tih theih a ni,” a ti a.

Petera chuan Isua hnênah, “Engkim kalsanin kan zui che a. Kan lâwmmann tûr chu eng nge ni ang le?” a



ti a. Isuan, “Mi tin inte emaw, unaute emaw, farnute emaw, pa emaw, nu emaw, fate emaw, ramte emaw keimah avânga kalsan apiang chuan a leh za an hmu ang a, chatuana nunna an chang baw ang. Nimahsela, mi tamtak a hmasate chu a hnuhnungah an awm ang a, mi tam tak, a hnuhnungte pawh a hmasa ah an la awm ang,” tiin a chhâng a.

ṬHUTHLÊNG RUAK

*FC Zosangkima
Senior Department
N. Vanlaiiphai Damdawi Vêng*

Pitar pakhat hian tlaia chaw a ei dâwnin a bulah ṭhutthlêng ruak a dah ziah ṭhîn a. Ṭhutthlêng chu a bia a, a hlim êm êm ṭhîn.

An ṭhenawmte leh amah lo hmutute chuan chutia a tih chhan chu an zâwt ṭhîn a. Pitar chuan Pathian ṭhutna anih thu leh an inbiak ṭhin thuin a lo chhâng ṭhîn a. Mite chuan, “Pathian chu vânah alâwm a awm. Engtin nge in inbiak ṭhin?” tia an zawhna chu pitar chuan, “Pathian chu hmun tinah alâwm a awm, a bula thu ka sawi dâwn chuan ka ṭawngtai a, a thusawi ka hriat dâwn chuan Bible ka chhiar ṭhîn,” a ti mai zêl a. Chutiang chuan chhâng ṭhîn mah sela, tu man an âwih duh loh avâng chuan pitar chuan Pathian chu mi zawng zawng hmuh laia lo kal tûrin a ngên fo ṭhîn a.

Zan khat chu Pathianin pitar hnênah chuan, “Naktûk zân dâr 7-ah ka lo kal dâwn,” tiin a rawn hriattîr thut mai a. Pitar chu a lâwm êm êm a, a ṭhenawmte hrilhin, a theih ang ang chuan a inbuatsaih nghâl a.

A tûkah chuan a vawk pakhat a talh a, a inbuatsaih nasa khawp mai a. An hmuh lai ngeiin lo kal se a tih avângin mi ṭhenkhat a ko khâwm bawk a.

Engkim an peih fel hnu chuan an nghâk ðhap mai a. Chutia phûr taka an nghah ðhap lai chuan kawngka chu tu emaw hian a rawn kik ri thut mai a. In chhûnga awm zawng zawng chu an phâwk ta hru mai a. Pitar chuan phûr takin kawngka chu a va hawng a. Pitarin kawngka a hawn rual chuan ‘a ni thei lo’ tiin an ri nghâl bawrh bawrh a.

Kawngkâah chuan pa pakhat, bâl zet leh ril ðâm tih hriat tak hi a lo ding a. Chu pa chuan, “Khawngaih takin ei tûr min pe hrâm rawh u,” tiin an khawngaihna a rawn dîl a. An beisei loh thil an hmuh avâng chuan ina lo awmte chu a haw ta vek a. Pitar pawh chu a zak hle a ni.

Pa pakhat nêh chuan chaw an ei ta a. Pitarin Pathian ðhutna atâna a tihah tak chu pa chu a ðhu a. Chaw an ei zawh chuan pa pakhat chuan a chhuahsan ve leh mai a. Chumi hnu chuan pitar chu rilru na tak chungin a ðawngðai a. Eng vângin nge Pathian chu a lo kal loh tih a hre duh a, Pathian hnênah chuan a lo kal leh lohna chhan a zâwt a ni.

A ðawngðai zawh chuan chhânna beiseiin Bible a kêu va. Chanchin ðha Matthaia 25:40: “Hêng ka unau tê berte zînga mi pakhat chung a in tih chu ka chung a ti in ni,” tih chu keu fuhin a chhiar ta a. Bible a chhiar zawh chuan a harh kâwk mai a. Pathianin a ðawngðaina a chhâng tih a hriat chuan a lâwm tak zet a. Chutiang thil a tawn aţang chuan ei tûr nei lote nêh hlim takin thil an ei ho ta ðhîn a ni.

PATHIAN BÂWM

Pathian bâwm leh a siam dân

Mosian Aigupta ram ațanga Israel fate a hruai chhuaha, thlalara an awm lai khân Pathianin Mosia hnênah bâwm siam tûrin a hrilh a, a len zâwng leh a siam dân tûr zawng zawng a hrilh vek bawk a. Chu bâwm chu ‘Pathian bâwm’ an ti a, thingrem ang deuh a ni a, thing ța chi, thingri an tih hmanga siam a ni.

Pathian bâwm chu tawng hnih leh a chanvea sei, tawng khat leh a chanvea zau, tawng khat leh a chanvea sâng a ni a. Rangkachak ța chiin an luan a, a tâng chu rangkachak hlang ngatin an tuam bawk a. A ke paliah chuan rangkachak khâng, ngûn kual ang an vuah vek a, chu ngûn kualah chuan a zâwnna fung, rangkachak tî-a luan an rawlh a. Bâwm chungah chuan ‘Zahngaihna Țhutphah’ an tih chu dah a ni bawk a. Zahngaihna Țhutphahah chuan Cherub (angel) pahnih, inhawi tawn lai lem an dah bawk a. Pathian bâwm hi hnatlânga siam a ni lo va, mistiri thiam bîk Bezalela siam a ni.



Pathian bâwm chhûnga thil awmte

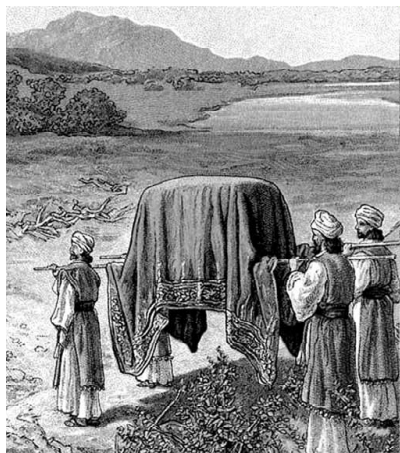
Pathian bâwm chhûngah chuan thil pathum an dah a, chûngte chu:

- (1) Thu sâwm pêk
- (2) Arona tiang
- (3) Manna bêl

Thu sâwm pêk hi Pathianin sinai tlanga Mosia hnêna a pek, lung pheka ziak a ni a. Pathian dân, a miten an zawm tûr a ni. Arona hi Mosia û, Pathianin Mosia tanpui tûra a ruat a ni a, puithiam atân a ruat a ni tih an hriat theih nân Pathianin a tiang chu a chawrtîr a, a pâr a, a rah nghâl ta mai a ni. Tin, manna chu thlalêra ei tûr an neih loh laia Pathianin Israel fate a châwmna kha a ni. Pathian bâwm hian Pathian chu a mite hnênah a chêng reng a ni tih a entîr a ni.

An kalna apiangah Pathian bâwm an keng zêl

Pathian chu a mite zîngah a cheng reng tih entîrna a nih avângin Israel-te chuan a huhova an kalna apiangah Pathian bâwm chu an zâwn zêl a. Awm hmun nghet an neih hma, kum sawm li lai thlalera an vahnaah



pawh an chhawm zêl a. Kanaan mite nêen an indonaah pawh an keng zêl a.

Jordan lui an kân dâwn pheikha chuan puithiamten bâwm chu mipui hmaah a fâla kalin an zâwn a, tui an han rah chuan lui tui luang mar pût chu a inthen phuk mai a. Bâwm zâwn chung zêl chuan puithiamte chu lui laiah an ding a, Israel mipui zawng zawngin lui an kai kim hma zawng chuan an ding reng a. Mipui an kai kim hnua Pathian bâwm zawntute an kai ve hnua chuan lui tui chu a ngaiin a luang leh mai a ni.

Pathian bâwm avânga thil râpthlâk thlengte

Vawi khat chu Israel-te leh Philistia mite an indo va, Israel-te chuan an hneh lo va, Philistia mite chuan Pathian bâwm chu an lâksak daih mai a, an milem pathian, sangha pathiana an ngaih, Dagona lim bulah an dah a.



Zîngah chuan Dagona lim chu a hmaia lei siin a lo tlu dêr mai a ni. An dintîr leh hnua a tûk zînga an va en leh pawhin, Pathian bâwm hmaah chuan Dagona lim chu a khaikhupin a lo tlu leh bul mai a, a lu leh a kut khing hnih chu kawngka

bulah a lo lum reng bawk a. A hmutute chuan an hlau hle a ni.

Chu mai a la ni lo va, Pathian bâwm an dahna khua leh chhehvêla mite chuan an taksa khawi lai laiah emaw bâwk, ðhang thei an nei ta sup sup mai a. Tichuan, khuaa mite chuan, “Israel-te Pathian bâwm hi kan hnênah awm teh suh se, kan chungah leh kan pathian Dagona chung a

kutthlâk hi a na em mai,” an ti a, an pe kîr leh ta ringawt a ni. Israel-ten Pathian bâwm an lak kîr leh hnu chuan Jerusalem pana tawlailîra



an phurh laiin tawlailîr hnûktu, bâwng khalhtu, Uza an tih chuan Pathian bâwm chu a lo khawih ve ringawt a, a thih phah dêr mai bawk.

Jerusalem-ah Pathian bâwm dah a ni

Dauida a lo lal khân Pathian bâwm chu Jerusalem khawpuiah a lak luhtîr a. Pathian a hlauh avângin a inah a kawl mai ngam lo va; mi pakhat, Obed-edom-a inah a dahtîr a. Obed-edom-a chuan malsâwmna tam tak a dâwn phah avângin Dauida chuan kawl ve a duh ta a. Lal inah chuan ropui

takin an zâwn lût a, inthawinate hlânin, tâwtawrâwt an hâm ruai ruai a, mipui an au dur dur bawk a. Lal Davida meuh pawh Pathian bâwm hmaah chuan nasa takin a lâm a ni.

Davida fapa Solomona a lo lal khân Temple ropui tak a sa a, Temple-a pindan chhûngril ‘Hmun Thianghlim ber’ an tihah chuan an dah ta a. Pathian bâwm an hûn veleh chuan chhum chhah mupin Temple chu a rawn tuam a, chu chuan Lalpa Pathian chu an zîngah a lo tel ve ngei a ni tih a entîr a ni.

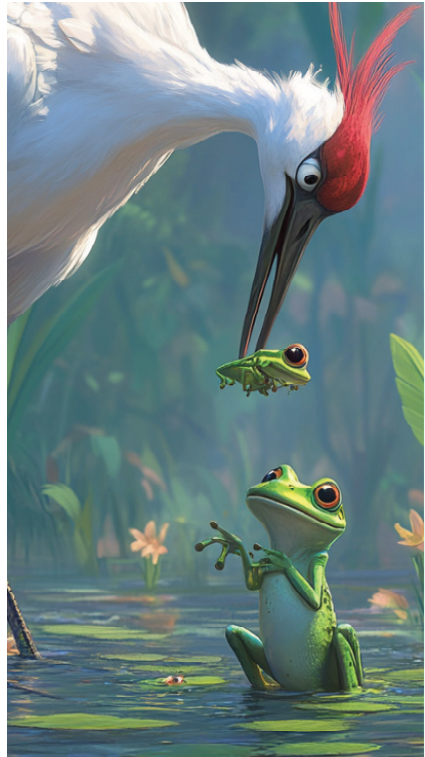
Zawhna

1. Pathian bâwm sei zâwng, len zâwng leh sân zâwng in hria em?
2. Pathian bâwm chhûngah engte nge an dah?
3. Pathian bâwmin eng nge a entîr?
4. Pathian bâwm avânga thil râpthlâk lo thlengte kha eng engte nge?
5. Pathian bâwm siamtu, mistiri thiam bîk kha tu nge?
6. Pathian bâwm hmaa nasa taka lâm kha tu nge ni?

CHUNGÛIN LAL AN DÎL THU

Hmânlai hian chungûte hian mahni thua awm an ning a, awm dân ða zâwka an awm theih nân an pathian hnênah lal an dîl a. An pathian chuan an rilru chapozia te a lo hriatin an awmna dîlah chuan thing tum a zuk thlâk bawrh mai a, thing tumin tui a tihperte an hmuh chuan chungûte chu an thlaphâng hle mai a. Li mawng chirhdûpah chuan, chhuah pawh chhuak leh ngam tawh lovin an bawh phêk reng hlawm a.

Nakinah chuan chungu pakhat chu ngam leh ngam lo chung hian a chhuak a, thingtum chu che miah lovin a lo awm a. Chu chu a hmuh chuan a ðhiante nêh a chungah an sawt kai lawk a, an hmusit ta hle mai a. Chuti kauva rorêltu tlawktlaw chu an iai ta a, rorêltu harh deuh tak an



pathian chu an dîl leh a. Ani chuan kânghlai a zuk pe a, kânghlai chuan an hnên a thlen veleh a theihpatâwpa rangin a ei ta nghauh nghauh mai a, an tânbosan thei si lo va. Tin, an pathian hnênah chuan anmahni zuk khawngaih lehna thu sawi tûrin zualko an tîr a. Nimahsela, an pathian chuan, “Ka khawngaih thei tawh lo a che u, chawh tak rawh u,” a lo tihsan ta a.

Thil i tihdanglam hmâin danglamna lo awm tûr chuan i dinhmun a siam that dâwn leh dâwn loh hre hmasa ang che.

(Thu lâkna: *Esopa Thawnthu Fing.SL&PB*; Aizawl, 2025)

PATHIAN THU THILTIHTHEIHZIA

Denmark khawpui Copenhagen-a lehkha zir lai, TJ Bach-a chu tlai khat chu tlangvâl pakhat hian Pathian thu inziahna lehkha a pe a. Bach-a chuan thinrim takin a pawthlêr ta a. Chu tlangvâl chu lehlam hawiin mittui tla zâwih zâwihin a tawngtai ta a. Bach-a rilru chu a hneh ta hle mai a. Chupa mittui leh insênsona te chu a ngaihtuah reng a. Inah a haw nal nal a, lehkha thler tawh chu remkhâwmin a chhiar ta a. Thingthiin Pathian hnênah ngaihdam a dîl a, mithar a lo ni ta a ni.

KRISTIAN NAUPANG MAN PÊK DÂN

Kristian Naupang chanchinbu man Bank kal tlanga pêk dan:

- (1) Account Holder : MPC, SYNOD
Account Number : 10665620059
Bank : **State Bank of India**
Branch : Mission Veng Branch
IFSC : SBIN0007058
- (2) Account Holder : MPC, SYNOD
Account Number : 25047048954
Bank : **Mizoram Rural Bank**
Branch : Khatla Branch
IFSC : SBIN0RRMIGB
- (3) Account Holder : MPC, SYNOD
Account Number : 001101820000093
Bank : **MCAB**
Branch : Centenary Branch
IFSC : YESB0MAB007

Bank kal tlanga pete chuan an pêk veleh an pêkna receipt an *screenshot* ang a, *agent* hming leh *address* kimchang nêh a hnuai *phone number* kan târ lanah hian Whatsapp leh remchâng dang hmangin thawn tûr a ni. Kan thunna *account awmna bank* hi hriattîr tel tûr a ni. (etn. SBI Account-ah nge, MRB nge, Apex Account-ah).

Thawna tûr : PU LALFAKZUALA

Phone number : +91-9862473218

HLUPUII HLIMNA

“Ka nu, ka ning êm mai, tih tûr eng mah a awm bawk si lo,” Hlupuii chuan a ti a.

Sikul chawlh aţangin kâr hnihna chauh a la ni a, khua a vawh avângin khawlai chhuah a peihawm lo nê! An TV chu a hlui tawh avângin a en ţha peih lo bawk a, ţhutthlênga mut nilên bak chu eng mah a ti peih si lo va, ni tin mai chuan a ning êm êm ringawt mai a.



“Ka chawhmeh zawrh chhûngin in hi lo tifa la, i ning lo mai ang,” tiin a nu chuan a chhâng a. Hlupuii nu hian an vêng chhehvêlah chawhmeh a phur kual a, a zuar ţhîn a; chawhmeh rit tak tak a phurhte chu a hahpui êm êm ţhîn a. Nimahsela, a fanu hlupuii chu a duat ve êm avângin a hnathawhnaah a hruai ngai lo. Hlupuii chu sikul a chawlh chuan inah a awm nilêng tawp zêl mai a ni.

“Ê, tih dân ka hria, vawiin chu sikul i châwl bawk a, ka chawhmeh zawrhnaah lo kal ve la, i lianin i chak tawh si a, min phurhpui ve ang a, kan hralh ãeuh mai ang,” tiin a nu chuan Hlupuii chu a sâwm a. Tih tûr dang a tih peih miao loh avângin Hlupuii chuan a nu thu chu âwihin a zui chhuak ve ta a.



An kalnaah chuan step thui deuh deuh te, mi kâwmkâr deuhvah te an kal a, chawhmeh chu an zuar zêl a; mite chuan hmeichhe naupangin a nu chawhmeh zuar a kalpuia, a lo phurhpui ve an hmuh chuan fel an ti hle a. An theih ang angin an chawhmeh zawrhte pawh an lo leisak a. Ni danga a nuin amah chauhva a hralh aia tam fê an hralh ta reng mai a. Chutia an vah vêlnaah chuan Hlupuii chuan an sikula a kalpui ãhin

naupang dangte pawh a hmu a, hlim takin an inbe hlawm a.

Haw kawngah chuan mitdel kutdawh khawngaihthlâk tak mai hi Hlupuii ang rual vêl hmeichhe naupang hian a lo kai a, mi khawngaihna an dîl kual a, khawlaiah chuan kawng sîrah an lo ding a. Hlupuiin chu chu a hmuh chuan a khawngaih ta êm êm a. A nu hnênah chuan ãanpuina pawisa pêk a dîl a, a nu chuan a lo phalsak a.

An chawhmeh hralhna hlêp ațang chuan mitdelte nufa chu Hlupuii chuan pawisa a pe a. “Bawihte, keimah min ãanpui avângin hna i thawk a, i ãhianteho awmnate i hriat phah a, mi dangin fel an ti che a, kan chawhmeh zawrh leiin min ãanpui lêt ve thung a; taima taka min puih avângin pawisa i hlawh a, keini aia ãanpui ngai zâwk mitdel kutdawh nufate i ãanpui leh a, thil ãha hlîr a ni i tih hi; Isua a lâwm ngawt ang,” tiin Hlupuii nu chuan a fanu chu lâwm takin a hrih a.

Hlupuii pawh chuan a nu thusawi chu dik a ti a, a theih phawt chuan a theih dân ang angin a nu leh mi dangte ãanpui zêl duhna rilru a lo pu ta a. A hlim ta êm êm a.

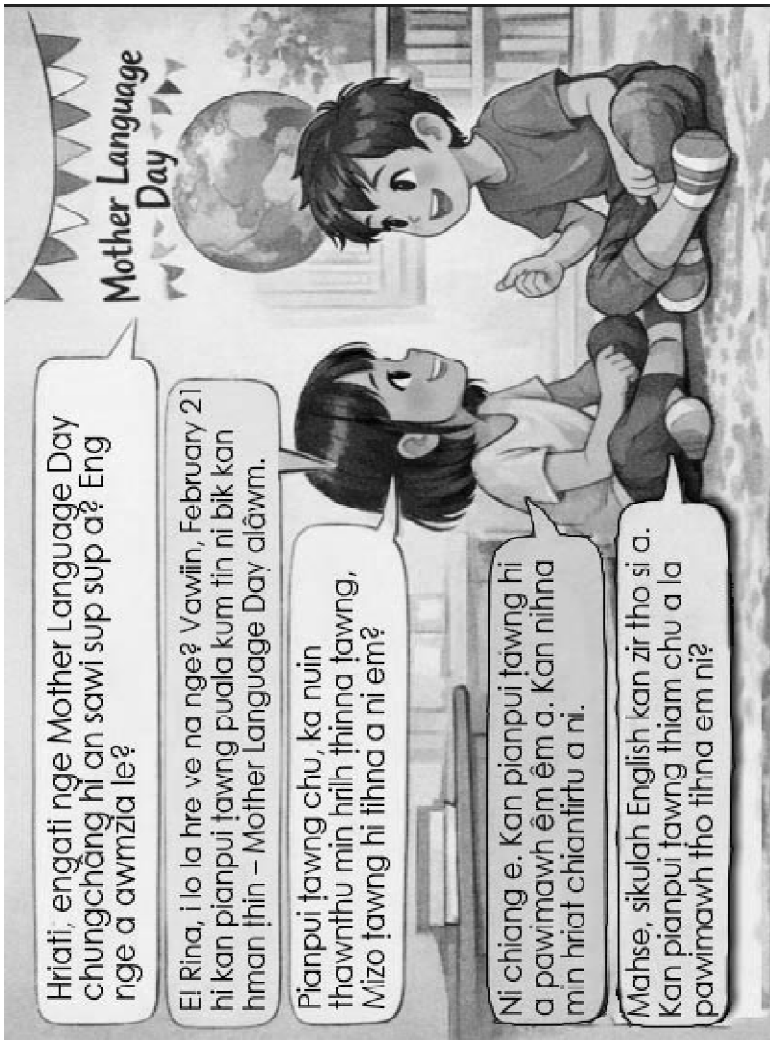
Mi dangte ãanpui hi hlimna a ni.

(Thu lâkna: Dr Lalțhakima, *Mut Hmun Thawnthu Sawmnga.*

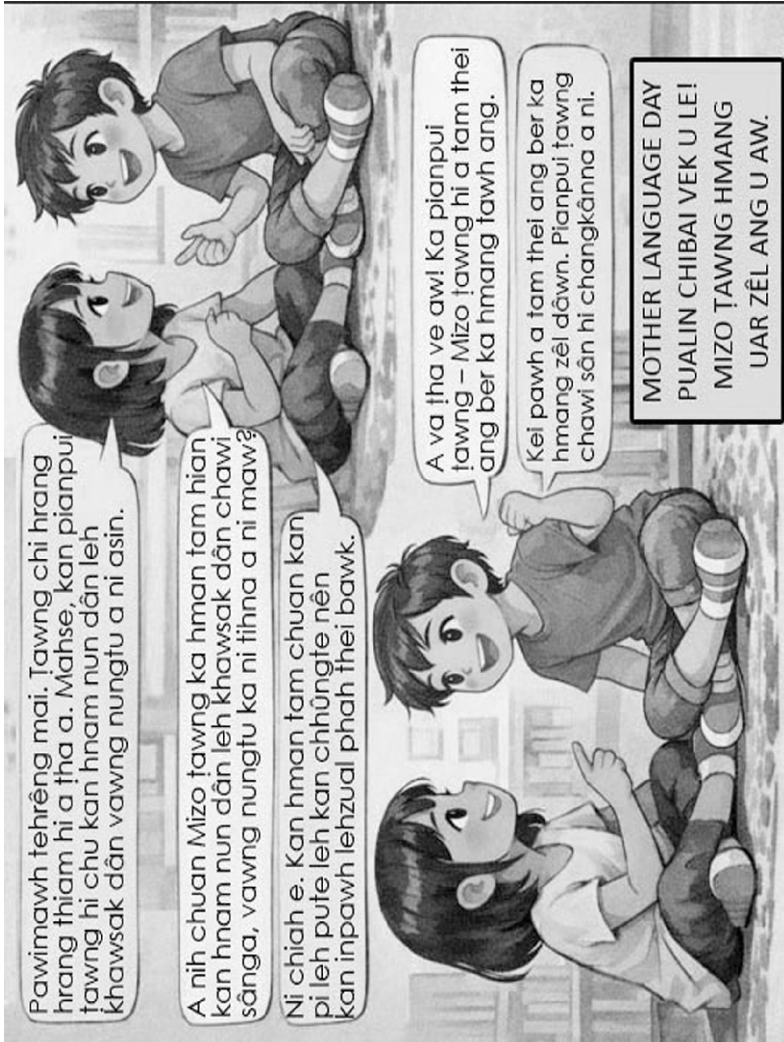
Aizâwl: SL&PB, 2025)

MOTHER LANGUAGE DAY

United Nations pêng pakhat UNESCO chuan February 21 hi Mother Language Day atân a puang a. He ni hi mahni pianpui ÷awng humhalha, chawi sân pawimawhzia inzirtîr nân hman ÷hin a ni.



Keini Mizote pawh Pathianin ṭawng mawi tak mai Mizo ṭawng min pe a. Kan pianpui ṭawng vawn him hi kan hnam a dinchhuah zêl nân a pawimawh êm êm a. Kan hman uara, kan hman uluka, kan chawi sân zêl a ngai a ni.





**N. VANLAIPHAI DAWMDAWI VÊNG
KOHHRAN NAUPANG INKHÂWM
LEH TLEIRÂWL INKHÂWM**

N. Vanlaiphai khua hi Mizoram laihâwl, chhimchhak deuh hretah Myanmar ramri hnaiha awm a ni a, Tuichângrâl khawpui bera ngaih a ni. N. Vanlaiphai Damdawi Vêng Kohhran hi April 4, 1969-a din a ni a. Tûnah hian dânzawhkim 663 an awm mêk a ni.

Kohhran Committee hnuaiah Sunday School Committee ða tak an nei a, Sunday School Committee hian Naupang Sunday School ðatna tûr a ngaihtuah ðîn. Sunday School Committee ruahmannain kum 2014 aţangin naupang inkhâwm leh tleirâwl chawhnu inkhâwm neih ðan a ni a. Pathianni chawhnu ‘Naupang Inkhâwm’ leh ‘Tleirâwl Chawhnu Inkhâwm’ tiin Naupang Sunday School zirlaite leh zirtîrtute an inkhâwm hrang ðîn. Naupang chawhnu inkhawmah hian Beginner Department, Primary Department, Junior Department leh Intermediate kum 1-na te an tel a. Tleirâwl chawhnu inkhawm hian Intermediate kum 2-na, Sacrament Department leh Senior Department-te an tel a ni.

Naupang Sunday School hotute leh Department hrang hrang zirtîrtute chuan inkhawm programme lo duang tûr leh thil ðûl dangte lo buaipui tûrin mi eng emaw zât ruat chhuakin,

Naupang leh Tleirâwl Chawhnu Inkhâwm Committee an din a. Chu Committee ruahmanna ang chuan thla khatah programme tum hnih te hman thin a ni. Taksa leh thlarau lamah naupangten hma an sâwn theih nân special item chi hrang hrang: solo, recitation, quiz leh group zai te an tih thin bâkah zirtirtute leh mi thiam zâwkte sawmin thu tha tak tak ngaihthlâk thin a ni baw.

Hla te an zir a, biak inah an rem thin a. Sol-fa leh music zirna hun te an hmang thin baw. Hêng bâkah hian mi thiam zâwkte sâwm lehkhazir dân tha te, thlai chin dân te leh bank saving pawimawhia te zirtir thin an ni baw. A khât tâwka Bialtu Pastor sâwm thin a ni a, ani hian sex education te, ruihlo that lohzia zirtirna hun te a hmang thin baw.

Vacation Bible School (VBS) kalpui a ni a, group-ah inthenin, intihlimna hun leh intihsiakna te neihpui thin a ni.

Naupang Chawhnu Inkhâwm leh Tleirâwl Chawhnu Inkhâwm hi naupangten an hlâwkpuiin nuam an ti tih a hmun theih a, inkhâwm an taima em em a, Sunday School bâkah kohhran inkhâwmah an inkhâwm tha thei hle. Zirtirtute pawhin theih tâwp chhuahin naupangte an enkawl thin a. Naupang leh tleirâwlten inkhâwm nuam an tiha, an hlâwkpui lehual theih nân zirtirtuten an rilru an sêngin, tan an la sauh sauh zêl a ni.



Striat Zauna Huang

CHAGALETTI NAUPANGTE LIBRARY: NAUPANGTE SIAM LEH ENKAWL

Bengalaru khawpui aṭanga km 23-a hla Chagaletti khuaah chuan library danglam tak mai a awm a. He libray hi naupangten anmahni pualin an din, anmahniin an enkawl bawk a ni.

He library hi kum 2010 khân an din ṭan a. Sikul naupang paruk: Shalini, Meghana, Vedashree, Vanishree, Manasa leh Karthik-te chuan naupanghoin lehkhabu an chhiara, an infiam, an inkawm theihna hmun neih an duh thu an sawi khâwm a.

Naupang
dikna
chanvo
buaipuitute
puihnain
library
siamna tûr
hmun



remchâng an hmu a, bul an ṭan a. An library chu Chagaleti Naupangte Library tiin an vuah ta a ni.

Library an din tirh aṭangin naupangte chuanan enkawl a. Lehkhabu an neih tharte an ziak lût a, lehkhabu hawh chhuahte an chhinchhiah a, a chhiarna hmun leh dah ṭatna hmunte pawh an

enkawl vek bawk. Chagaletti Naupangte Library hi naupangten naupangte tâna an din leh an enkawl a ni a. Library an din ațanga thla riat chauh a liam tihah Hippocampus Reading Foundation ațangin Best Community Library award an dawng hial a ni.

Kum 2020-a hripui a lo lên pawh khân he library enkawltute hian kawng hrang hrangin țan an la a. Lehkhavute sikul hrang hrangah an keng

kual a, lehkhabu chhiarna hun te an buatsaih. Hlawhfa, awm hmun nghet nei



lo fâte lehkhabu chhiar tûrte an hawhtîr a, chutiang chuan an library thleng thei lote tân pawh lehkhabu chhiarna hun an siam bawk țhîn. He an țan lâkna hian rah duhawm tak a chhuah a. An khaw daia inhlawhfa chhûngkuua naupang 18 lai chu an library hmang țangkai zuitu an nih phah a ni.

He library hi lehkhabu chhiarna leh hawh chhuahna hmun mai a ni lo va; library-ah hian naupangten naupang dangte Sâp țawng te, Kannada țawng te leh mathematics te an zirtîr țhîn. Hei bâkah hian spoken English te pawh an zirtîr

bawk. Library hi ṭhian thar an chharna hmun, an inkawmna hmun, inrintâwk leh puitlin an zirna hmun ṭangkai tak a ni.

An din ṭan aṭanga kum 15 zet a liam hnuah pawh he library hi naupangte enkawl a la ni chhonzawm zêl a. He library lo enkawl ṭhîntu mi ṭhenkhat chuan hna an thawhna, hmun dang aṭangin naupang library enkawl mêkte chu an rawn kaihruai ṭhîn a ni. Chagaletti leh a chhehvêl khaw 11 aṭangin library member 250 lai an awm tawh a. Naupang, a duh apiang library member an ni thei a. Library fee hi ₹10 chauh a ni.



He library-ah hian lehkhabu 5,000 dâwn lai a awm a. Thawnthu bu te, Encyclopaedia te, milem chuanna lehkhabu te leh lehkhabu dang tam tak a awm.

He library hian Chagaletti khaw pâwn lamah pawh rah ṭha a chhuah zêl a. Karnataka state-a

naupang library tam tak chu he library chanchin miten an hriat aṅanga lo piang ve a ni. India ram chhûng leh ram pâwna tlâwmngai pâwlte pawhin he library kalphung entawn hian naupang pual library din ve an tum mêk bawk.

Chagaletti Naupangte Library chanchin aṅang hian naupangte an ṅan rual a, theih tâwp an chhuah phawt chuan thil an tih theihzia kan hmu a. Naupangte hi mawhphurhna kan pêk ngam a, kan kaihhruai phawt chuan thil ropui tak an ti thei tih a lang Chiang bawk. Puitlingten thu tlûkna tam ber an siamna khawvêlah hian, naupangte hi kan rin ngama, thil ṅha ti tûra kan kaihhruai phawt chuan thil ṅha tak thlentuan ni thei tih a hmuh theih a ni.

ṬAWNGṬAI NGAI HLU

Charles F. Kettering-a, motor siam chhuaktu company lian leh lâr taka engineer-te zînga hotu ber ni ṅhîn chu, “I kuta i tih tawhah eng nge ropui ber ang le?” tiin an zâwt a. Ani chuan, “Ka kuta ka tih tawha ropui ber nia ka hriat chu, ka kut pahnih suiha vîn lam hawia ka ṭawngṭai kha a ni,” tiin ṭawngṭai a ngaih hlut thuin a chhâng a ni.



Kristian naupang leh tleirâwl zîngah inkhâwm ngaihsak lo, Bible chhiar nachâng hre lo, Kristian nun dân tûr hre lo ka hmu hnem hle mai.

Zosâp awm rei pawl tak Pu Lloyd-a khân, Mizorama a awm lai chungchâng a sawi a. Chuta a sawi pakhat chu, “Thingtlâng khaw kilkhâwr takah pawh kohhran mipui phûr tak hmêl kan hmu zêl thîn a, min tilâwm êm êm a ni. Inkhâwm bânah in lamah inpâwl hona kan nei zui deuh ziah thîn a, subject tin rêng kan sawi mai thîn a, Bible thu leh Kristian nun kan sawi tam ber thîn a ni,” tih a ni.

Hemi thua chhinchhiah tlâk tak chu: (a) Kohhran mipui phur tak; (b) Bible thu leh Kristian nun sawi tam ber tih hi a ni.

Kan thán len zelna atâna thil pawimawh tak chu phûr taka inkhâwma, Bible chhiar taihmâka, Kristian awm dân tûra awm leh nun dân thá lam sawi tam leh ngaihtuah tam a ni.

Hei hi Youtube en leh games khelh aia thá zâwk leh tûl zâwk a ni a, theih tâwp i chhuah ang u.

*Lehkha chhiar thîn ringtu chuan hma a sâwn thîn.
Ringtuin lehkha chhiar a bânzan chuan a
thang thei ngai lo.*

Jonh Wesley

THAWNTHU INPHUAHSIAK

Synod Literature & Publication Board chuan thawnthu inphuahsiak a buatsaih a. He thawnthu inphuahsiaka tel tûrte kaihhraina hetiang hian siam a ni:

1. Naupang/leirâwl pual thawnthu inphuahsiak tûr a ni.
2. A phuahtu tûr kum bithliah a awm lo va, Mizoram Presbyterian Kohhran mi, a duh apiangin phuah theih a ni.
3. Mahni irâwm chhuak ngei a ni tûr a ni a. Thawnthu awm tawh sa behchhana phuah emaw, ÷awng dang aţanga lehlin emaw phal a ni lo.
4. Kristian inzirtîrna leh kohhran inzirtîrna lam hawi a ni tûr a ni.
5. Mi pakhatin thawnthu pakhat aia tam theh luh loh tûr a ni.
6. Mahni hming te, kum te, kohhran hming te leh contact number te chiang taka ziah lan tûr a ni.
7. Thumal 10,000–15,000 ziah tûr a ni.
8. Print chhuah sa (hard copy) emaw, a soft copy-in emaw theh luh tûr a ni.
9. A hard copy chu SL&PB Office-ah mahni kalin emaw, dâk hmangin emaw theh luh tûr a ni. A soft copy-a theh lut duh chuan kristiantlangau1911@gmail.com emaw, Whatsapp hmangin phone number 6909132893-ah emaw theh luh tûr a ni a. Thawnthu inphuahsiaknaa tel an ni tih an ziak lang tûr a ni.
10. Kum 2026 May 29 thleng a theh luh theih a ni ang.

Lâwmman

1. Hetiang hian lâwmman pêk a ni ang:

Pakhatna : ₹30,000

Pahnihna : ₹20,000

Pathumna : ₹10,000

Consolation prize : ₹5,000 (mi 7 hnênah pêk a ni ang)

2. Lâwmman pakhatna aţanga pathumna dawngtute hi pawisa fai bâkah thuziak hun mawi (plaque) pêk a ni ang.

3. Lâwmman dawngtute thuziak hi a bua chhuah a ni ang a. A bu a chhuah hunah royalty pêk thin ang rate-in royalty pêk a ni ang.



Bible aṭangin zawhna siam a ni a. Eng zât nge kan chhân dik theih i han enchhin teh ang u aw:

1. Ni tin ka thi ṭhin titu kha tu nge?

Chhânna:

2. Dorki kha khawi khuaa mi nge?

Chhânna:

3. Dorki tih awmzia kha eng nge?

Chhânna:

4. Lazara te kha khawi khuaah nge an awm?

Chhânna:

5. Lazara kha a thih khân thlânah ni eng zât nge a awm hman?

Chhânna:

6. Kapernaum khuaa inkhâwmna in hotu kha tu nge?

Chhânna:

7. Jaira fanu dam lo kha kum eng zât nge?

Chhânna:

8. Grep sâwrna khura buh lo vua, Pathianin a koh kha tu nge?

Chhânna:

9. Mosia thlâktu, Israel-te hruaitu kha tu nge?

Chhânna:

10. Daniela kha ni tin vawi eng zât nge a ṭawngṭai ṭhin?

Chhânna:

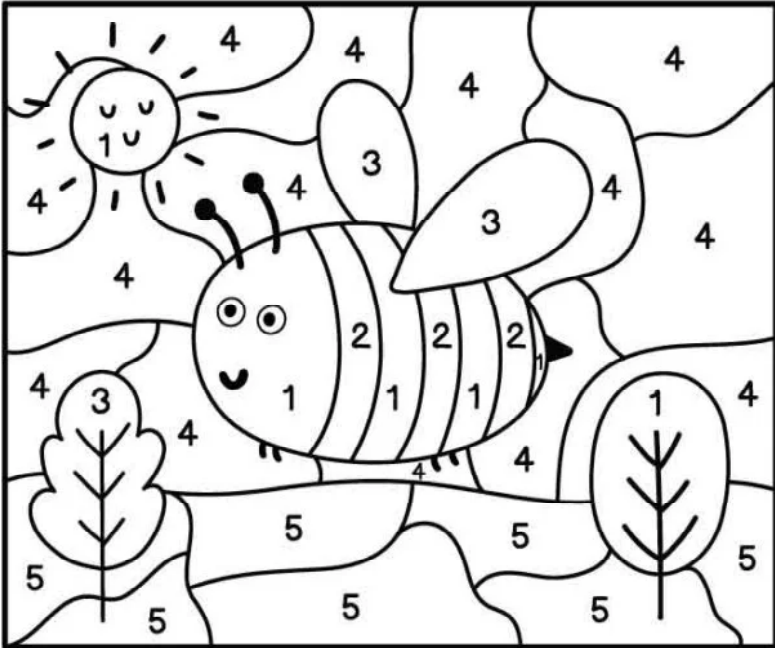
Note: February thlaah a chhânna târ lan a ni ang.

January thla Quiz chhânna:

- | | | | |
|------------------|---------------|----------------|---------------|
| 1. Josefa | 2. Lalpa ṭih | 3. Sâwm pathum | 4. Abrahamama |
| 5. Lalpa Thlarau | 6. Pathian | 7. Pathian | 8. Hebrai |
| 9. Sawm | 10. Phai zâwl | | |



CHEI RAWH LE!



1-Yellow
4-Blue

2-Black
5-Green

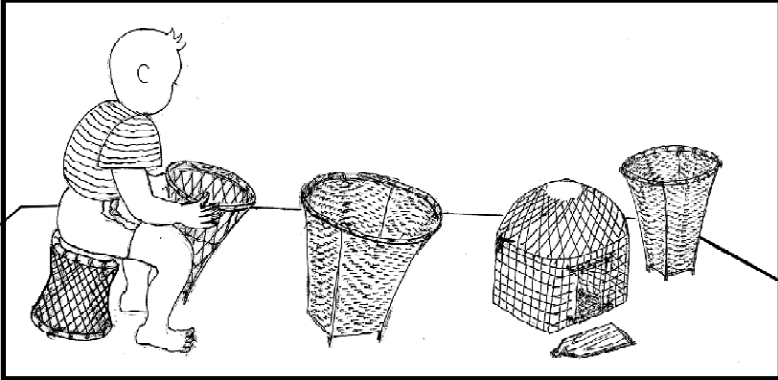
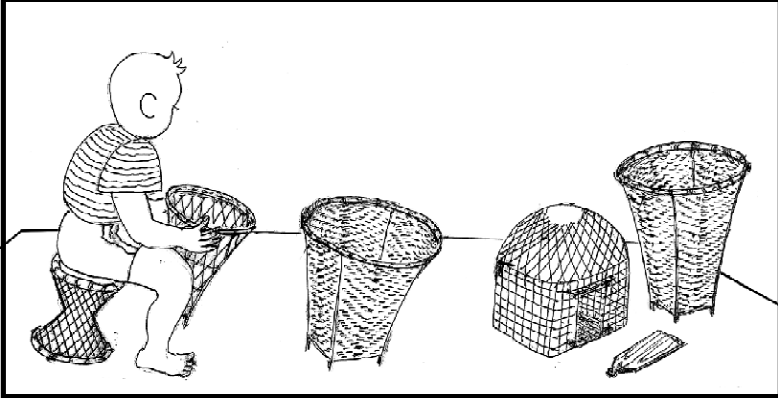
3-Brown

HRIATTÍRNA

Kristian Naupang-a thu chhuah tûr nei tân
kristiannaupang@gmail.com ah emaw,
whatsapp hmangin phone number 8974581885-
ah emaw theh luh theih reng a ni.

Editor, Kristian Naupang

KA HMUH ANG HMU THEI RAWH



A chunga lemziak chi hnih khi ngun takin en la, a inan lohna chi ruk hmu thei rawh.

1.
2.
3.
4.
5.
6.



Champhai Kahrawt Kohhran Junior Department 2025



Champhai Kahrawt Kohhran Tleirâwl Inkhawm 2025



Saitual Bethel Sacrament Department 2025



To

N. Vánlaiphai Damdawi Vêng Kohhrran
Naupang leh
Tleirâwl Chawhnu Inkhâwm

Published by Rev. P.B. Zosaphara
Synod Literature & Publication Board, Aizâwl and
Printed at the Synod Press, Mission Vêng, Aizâwl - 796001. Copies - 35,000