

ESTD: October 1994  
THLA TIN CHHUAK CHANCHINBU  
Kum khat lâk man ₹50

**NOVEMBER 2023**

Postal Registration No. MZR/70/2021-2023  
RNI Registration No. 66996/96

# Kristian Naupang



Vol. 29 Issue No. 347

## DEBORI



**AN CHANCHIN**

N. Vanlaiphai Kohhran Naupang leh Tleirâwl  
Chawhnu Inkhâwm

• NU LEH PA THU ÂWĪH ȚHATZIA • ȚAWNGȚAI HLUTNA  
• BERÂMPU RINAWM LO • TUMRUHNA  
• NAUPANG KHAWNGAIH THLÂK

Kum 29-na

November 2023

Vol. 29 Issue No. 347

*Editor*

**Rinsailovi, Ph: 9856930670**

*Managing Editor*

**Rev. Lalbiaknia**

*Joint Editors*

**Upa Neihthanglunga**

**E Vanlalrochana**

**Zohmangaiha**

**Eric Lalnunmawia**

*Circulation Manager*

**Lalremmawia, Ph: 9862374560**

# **Kristian** **Naupang**

**Synod Office, Second Floor**

**Mission Vêng, Aizâwl - 796001**

**email: kristiannaupang@gmail.com**

A man pe duh leh a bu la duh chuan

Circulation Manager hriatîr tûr a ni.

**Kum khat lâk man ₹50**

*Kristian Naupang thu chhuabte hi Editor ngaih dân a ni vek kher lo.*

## **A chhûnga thu awmte**

## **Phêk**

- |  |         |
|--|---------|
| 1. Editorial                                 | .....1  |
| 2. Nu leh Pa thu awih thatzia                | .....2  |
| 3. Tawngtai hlutna                           | .....5  |
| 4. Thu âwihna                                | .....8  |
| 5. Nungchate chung a ngilneih                | .....10 |
| 6. Debori                                    | .....12 |
| 7. Berâmpu Rinawm lo                         | .....16 |
| 8. Naupang Khawngaih thlâk                   | .....19 |
| 9. Tumruhna                                  | .....22 |
| 10. An chanchin – N. Vanlaiphai Kohhran NPSS | .....24 |
| 11. Hriat zauna huang                        | .....26 |
| 12. Hmutheitua                               | .....28 |
| 13. Quiz                                     | .....30 |
| 14. Chei rawh le!                            | .....31 |
| 15. Ka hmuh ang hmu thei rawh                | .....32 |



## Duhthlanna

Mihringte hi Pathianin ropui takin, duhthlang theiin min siam a. Kan hmaah hian duhthlan tûr pahnih chhia leh ða a awm a ni. Ramsa leh thilsiam dang zawng zawngte hi chu pianpui finna ring (instinct) an ni a, hnute hnêk, chaw ei, bu chheh dân etc. kha an thiam a, duhthlan theihna a hranpain an nei ve lo. Chutih lâi chuan mihringte erawh chu Pathianin duhthlang theiin, chhia leh ða hmang theiin min siam a ni. Chu tak mai chu thilsiam dangte aia mihring chungnunna pawh a ni.

Pathianin duhthlan theihna min pe vek a, duhthlanna kan siam chuan kan hma lam hun thui tak a nghawng avângin a pawimawh ta êm êm a ni. Duhthlanna siam dân hian mihring nunah insual a awm ðhin. Chutah chuan Kristian kan nih ang takin Pathian duh zâwng Malsawmna Kawng chu kan thlan a ngái a. Chu kawng thlang thei tûr chuan Pathianin chhia leh ða hriatna min pêk hi kan hman a ðul a ni.

Duhthlanna dik leh dik lo siam kawngah a mawhphurtu chu keimah hi ka ni a. Chuvângin, kan hma lam atân eng nge ða ber tûr tih hi ngun taka ngaihtuah ðhin tûr a ni.

## Nu leh Pa thu âwih thatzia

*Lallâwmzuali Pachuau  
Intermediate Department  
Kawrthah Kohhran*

Hmânlai hian hmeichhe naupang pakhat hi a awm a, a hming chu Debbie-i a ni. Nu leh pa duhawm tak a nei a, a nun a hlim thei êm êm a ni. Mahse, harsatana pakhat a nei a, chu chu a fing vak lo hi a ni. A nu leh pate chuan a inzir nân theihtâwp an chhuah a, mahse, a ti hlei thei lo. A upat deuh hnuah pawh hma a sâwn hlei thei chuang lo a ni. Pawl 11 a nih chuan Debbie-i chu inah a lo haw a, lâw thiam nih a duh vângin sikul kal tawh loh mai a duh thu chu a nu leh pate hnênah a sawi a. A nu leh pate chuan an remtihsak lo chung pawh chuan a dîl lui zêl a, an phal dâwn lo tih a hriat chian chuan a pindanah a tlân lût a, an in chu chhuahsan tumin a thawmhnaw ken tûr te la khâwmin a pawisa khâwlte chu lain a tlân bo ta a. A thatia inah thla khat a châm ta a, amaherawhchu, a thatia chhûngkua chuan pawisa an neih loh avângin a awm ve thei ta lo a ni.





Chutia awmna tûr mumal pawh nei lova beidawng taka khawlaia a kal lâi chuan an inah awm sela chuan a hlimin a hrisêl zâwk ngei tûr tiin a inngaihtuah a, a lo tlân chhuak ta chu a inchhîr ta êm êm mai a. Chutia khawlaia a awm lai chuan a ril a tîm ta hle mai a, a t̄ha lo tih hre reng mah se a bula hmeichhe tleirâwl pakhat thil rûk chu a tum ta a. Chu nu chu a kalna lamah a zui zêl a, a bag khai lai chu a phih thlâksak ta thut a, a tlânchhe ta daih a. Hmeichhe tleirâwl chu ring takin a au nghâl a, Debbie-i chu chak takin a tlân bo ta daih a.

Hmun him chin a thlen chuan Debbie-i chuan bag chu a hawng a, a chhûngah chuan phone, pawisa, hnawihsen leh in chabi a hmu a. Debbie-i chuan phone leh hnawihsen te chu a hralh nghâl a.

Debbie-i chuan inthiam loh tak chungin a thil rûkte a hralhna pawisa chuan ei tûr a lei a, a thil lei a ei zawh chuan a taksa a chauh avângin a lo muhil a. A muhil a harh chuan a ril a lo tîm leh ta hle a, a pawisa neih ang ang chuan ei tûr a lei leh a, a bag rûk a la hralh lo tih a hre chhuak thut a, a bag rûk chu a la a, hmun pakhat a hralh leh ta a.

A pawisa neih ang ang chu kengin park-ah a kal a, amah chauhin a t̄hu ta a. A chauh tawh êm avângin a lo muhil leh ta a. A muhil a rawn harh leh chuan a ril a tîm hle a, pawisa a neih chhun

chuan ei tûr bawk chu a lei leh ta a. Mahse, thil a rûk leh loh chuan pawisa a nei lo t̄ep tawh tih chu a inhria a. Thil rûk chu t̄ha lo viauin hre mah se a ril a t̄am zêl avângin thil rûk tûr chu a zawng leh a.

Park-a hmeichhe pakhat thil chu rûk leh a tum ta a, chu nu chu a zui leh ta a, a bag khai lai chu lâksak tumin a pawt a, chu nu chuan nghet takin a lo vuan si a. Debbie-i chuan bag neitu chu Chiang takin a en a, bag neitu pawh chuan Chiang takin a lo en ve bawk a. An han inhmuh chuan mak an ti d̄un hle a. Chu bag neitu nu chu Debbie-i nu a lo ni reng mai a. Debbie-i chu a zak hle a, t̄ap chungin a t̄lan a, a nu chu a hmu zak hle a, biak pawh a hreh hle a.

A nu chuan a rawn ûm pha a, a bânah a man ta a. Debbie-i chu chhûn leh zâna an awmna an zawn nasat thu leh an ngaih tawh thu te chu a hrilh a. Debbie-i pawh chuan a nu leh pate thu awih lo va a awm leh an in a chhuahsan mai chu hrehawm a tihzia te, nu leh pa thu a awih loh pawl a tihzia te a nu hnênah chuan hrilhin ngaihdam a d̄il a, a awm dân chu hrehawm a tih thu chu a nu hnênah chuan hrilhin, nu leh pate thu âwih t̄hatzia leh nawmzia a hriat chian t̄ak thu a hrilh bawk a.

Debbie-i nu chuan ina haw tûrin a thlêm ta a, tichuan inkuah chung chuan an inah hlim takin an haw d̄un ta a. Debbie-i chu ina a haw leh hnu chuan a lo hrisêl a, a hlim ta êm êm a ni.

## Ṭawngṭai hlutna

*Lalawmpuii Hrahsêl  
Junior Department  
Aibâwk Kohhran*

Hmânlai hian hmeichhe naupang fel tak mai hi a awm a. A hming chu Mâwii a ni a, a pa chuan zû a in ṭhîn a, a nu chu nu taima tak leh Pathian thu awih êm êm mai a ni. Ni khat chu Mâwii chuan a pa zu in lai chu a hmu a, a ṭap kerh kerh mai a, chutih lai tak chuan a nuin a va hmu a. Bawihthe engati nge i ṭah? a ti a. Mâwii chuan, “Ka pain zû a in a, ka rilru a hrehawm lutuk a ka ṭap tawp mai” tiin a chhâng a. A nu chuan bawihthe ṭap tawh suh kan ṭawngṭai ang a, Pathianin min la ṭanpui êm êm ang tiin a hnêm a. A pain zû a nghei theih nân an ṭawngṭai ṭhîn a.



Zân lamah chuan Mâwii chuan mumang a nei a, a mumangah chuan a pa pawhin zû a lo in tawh lo va. Kristian chhûngkaw hlim tak an lo ni a. Mawii chuan a mumang ang khân thil thleng ve se tiin a ngaihtuah a, mahse a theih si loh.

Ni khat chu Mâwii pa chu a dam lo vak a, Mâwii leh a nu chu an lungngai êm êm a, a chhan chu inenkawlna tûr pawisa an neih loh vâng a ni. Tlâi a lo nih chuan Mâwii pa chu a zual telh telh a, a thi mai dâwnin Mâwii chuan a hria a, a ɽap vak vak a, a nu chuan bâng rawh tiin a thlêm a. A pahnih chuan an ɽawngtâi ta tawp a. Zânah chuan Mâwii chuan a nu hnênah, “Ka nu ka pa hi a dam khawchhuak leh ang em?” a ti a. A nu chuan, “Bawihthe, i pa chuan min thihsan ɽep tawh alâwm” tiin a lo chhâng a. Chu thu Mâwiin a hriat chuan a pa bulah a tlân a, a pa chuan bawihthe zû ka in ɽhin avâng khân hrehawm takin ka lo siam che u a, min ngaidam dâwn nia, ka tih palh a ni, i nu nêh khân hun nuam tak lo hmang ngei ang che u. Ka tih palh bawihthe mangɽha tiin a thi ta a. A nu nêh chuan an ɽap ta zawih zawih mai a.

Kum tam tak a liam hnu chuan Mâwii pawh a lo nula ve ta a. Ni khat chu Mâwii nu chu a damlo vak a. Damdawi inah an hruai a, Doctor leh nurse te enkawlna avâng chuan hun rei lo têah a dam ve leh mai bawk a. Mâwii nu chu a hrisêl loh êm avângin a damlo reng mai a, pawisa pawh a hautak hle mai a.

Ni khat chu Mâwii nu chu a thaw hah a zual avângin damdawi inah an hruai leh a, tûna a damlo hi chu a na zual hle mai a. Mâwii mangang lutuk chu a ɽawngtâi ta ringawt mai a, thil mak tak mai a

thleng a, thâwk leh khatah a nu chu a rawn dam ta vek mai a, doctor leh nurse te chuan mak an ti êm êm a. Mâwii chuan a rilru chuan Pathian thiltihtheihna a nihzia a hre chiang hle a.

Ni khat chu Mâwii te inkhâwm bâng chu a phone a rawn ri a, thu lâwmawm loh deuh mai hi a lo ni a, a nu a thih thu an rawn hrillh ta mai a, chu thu a hriat chuan mak a ti hle a, a thâwng tak zet a. Hmanhmawh takin an in lam pan chuan a haw ta nal nal a, a nu thihna avâng chuan a lungngai êm êm a. A ãap vak vak a, mahse tih theih engmah a nei tawh si lo.

Zan khat chu a mumangah Mâwii chuan a nu leh pa a hmu a. A nu chuan, “Bawihte ka ngai hle mai che, i hriat reng tûr chu engkim kha Pathianah innghat tawp rawh, ãawngtâi tam la, tichuan engkim chu a fel leh vek mai ang” tiin a nu chuan a lo sawi a. Mâwii chu a harh zawk a, a mumang chu ngaihtuah zuiin a nuin a sawi ang chuan tih a tum ta a.



Tichuan, a nu leh pa te hre reng chungin taima taka ãawngtâi chungin Pathianah engkim ngghatin hlim takin a nun chu a hmang leh ta a. A naupan laia a lo châk êm êm thîn missionary hnathawk tûrin a kal chhuak ve ta a ni.



## Thu âwihna

*K. Vanlalduhawma  
Junior Department  
Tlangnuam South Kohhran*

Hmânlai hian vêng pakhatah ðhian dôn inkâwm ngeih tak mai hi an awm a. Pakhat zâwk chu Lala niin pakhat chu Pâra a ni a. Lala chu naupang fel tak, nu leh pa leh Pathian thu âwih tak a ni a. A ðhianpa Pâra erawh chu naupang luhlul leh sual tak mai niin nu leh pa thu âwih lo tak mai hi a ni thung a. Pâra chuan a ðhianpa Lala ni lo mi dangte chu tihnâw reng a tum a, a vêl ðap reng bawk ðhîn.



Ïum khat chu Pâra leh Lala te chu an infiam a, hlim taka an infiam lai chuan an awmna chungah chuan lung lian tak, tla mai thei hi a awm tih puitling zâwkten hrilhin infiam tawh lo tûrin an ti a. Lala chuan thuawih takin a zâwm mai a, mahse Pâra chu a tûkah a kal leh hrâm a. Lung tla mai thei



awmna hnuaiah chuan awmin a tlân kual leh ta vak vak a. Tichuan, lung tla mai thei awmna lâi zâwn tak a thlen chuan a tlu palh ta hlauh mai a. A tlûkna avâng chuan lung awmna bang chu a tiche ta a, chu chuan lung lian tak mai chu a rawn titla palh ta hlauh mai a. Vârneihthlâk takin lung tla chuan Pãra bân vei lam leh a ke vei lam chiah chu a delh a, na a ti hle a. Tãnpuitu tûr chu a au ta vak vak a. Vârneihthlâk takin a chêt sualna bulah chuan hna thawk an lo awm hlauh mai a, chûng mite chuan a âu thâwm chu an lo hria a, tãnpui tûrin an lo kal thuai a.

Pãra chu hmanhmawh taka la chhuakin damdawi inah kalpui nghâl a ni a. A thisen nasa takin a chhuak a, a bân ruh leh a malpui vei lam ruh chu a tliak bawk a. Damdawi inah chuan rei tak a awm a.



Thla khat zet Pãra damdawi ina a awm hnu chuan Lala chuan a tãianpa chu a tlawh a. Pãra chuan a thuawih loh avânga tuar a nih thu chu a tãianpa Lala hnênah chuan a lo hrilh ta vek a. A inchnâr thu leh naupang thu âwih tak nih a duh thute a lo hrilh ta a. Damdawi in ațanga a chhuah hnu chuan Pãra chuan naupang fel leh thu âwih tak nih a tum ve ta a ni.

## Nungchate chung a ngilneih

C. Lalrammawia  
Junior Department  
ITI Vêngchhak Kohhran

Tûk khat chu zîng ni chhuah rual hian Siam a chuan a thianpa Thanga chu sava châng tûrin a sâwm a. Thanga pawh chuan phûr takin a sava vehna ipte chu lain a zui chhuak ve nghâl a. Thirdêngpa, Pu Zakunga te kawmthlang lam pan chuan phûr takin an inzui thla ta hnak hnak a. Kelbuh (*Kelbuh rah hi sava ei duh deuh mai a ni*) kûng hnuai a chuan an thû ta a.

Nakin deuhah chuan sava rual hi an rawn thlâwk ta dam dam a, Kelbuh rah hmin thâ thâ chu an rawn ei ta a. Siam a chuan chhim lam zâra mi chu a han perh ta pawp mai a, a tla ta a, sava dang chu an thlâwk darh vek a. Mahse, an ril a tîm êm avâng chuan ei tûr awmna nge nge chu an rawn pan leh nghâl a.



Thanga chuan tlâk lam zâra mi chu a han perh a, Chiang taka a perh fuh loh avângin sava

chu thei leh thei lo chuan a thlâwk tawk tawk a. A thla chu a perh nat avâng chuan thei leh thei lo hian hnim zîngah chuan a thlâwk lût ta a. Thanga chuan a sava perh hliam chu man tumin a han zawng a, mahse, a hmu zo ta hauh lo mai a.

T i c h u a n ,  
Thanga chu a rilru a  
nuam thei ta rêng  
rêng lo mai a. Sava  
chu a khawngaih ta  
êm êm mai a. Sava  
chu na tuarin a awm



ang a, tumah enkawltu tûr an awm dâwn si lo va,  
engtia rei nge a dam ang a, engtin nge a awm ang  
tih chu a ngaihtuah nasa hle a, rilru nuam lo leh  
hrehawm taka awmin sava leh nungcha dang  
chungangilnei nih chu a tum ta a. Chutia rilru nuam  
lo taka awm reng ai chuan Siamachu hawpui tûrin  
a sâwm ta ringawt mai a.

An t̄hian d̄n chuan in lam pan chuan an  
haw ta a. Kalkawnga an kal lâite chuan Thanga  
chuan sava chu a khawngaih thu leh a in ch̄h̄zia te  
chu Siamah̄nênah a h̄rilh ta a. Siamapawh chu  
sava veh tawh lo t̄r leh khawngaih ve t̄r chuan a  
sâwm ta a.

Tichuan, nungchate hmangaih leh an chungangilnei tawh t̄r chuan an t̄hian d̄n chuan an intiam ta a. An sava vehna hmanruate pawh chu an paih ta vek a ni.

## Debori

Debori hi Israel rorêltute zînga hmeichhe awm chhun a ni a. A pianna leh sei lenna hi Bible-ah ziah lan a ni lo va; Isakar hnama mi a ni a, Lapidotha nupui a ni. Debori hming awmzia hi ‘Khuai’ tihna a ni. A chanchin hi Rorêltute bung 4 leh bung 5-ah kan hmu a; bung 4-ah hian chanchin ziah dân pângngaiin a rorêl lai chungchâng hi ziah a ni a, bung 5-ah erawh hi chuan hla thu hmanga ziah a ni thung. Debori hi ‘Israel ram nu’ tia koh hial khawpa nu ropui a ni.

Thuthlung Hluia ‘Rorêltute’ hna hi tânlaia rorêlna court-a dân hmanga rorêltuten thubuai an rem ang chauh hi ni lovin, indona hmuna Israel mipuite chhan chhuak tûra hma hruaitute an ni. Dân hmanga an rorêlna lam aiin Israel fate awp bettu hnam dang lalte nêna an indona chanchin hi Bible-a kan hmuh tam zâwk chu a ni. Hebrai ãawng chuan rorêltute hi *sophetim* (so-fe-tim) tih an ni a, a awmzia chu dikna tung dingtute tihna emaw, chhan chhuaktute tihna emaw a ni. Mi chak lo zâwkte ãanpuia, awp behna tuarte leh chhan chhuah ngaite chhan chhuak tûra indona pawh hmachhawn ngamte dinhmun sawina a ni. Hetiang mipa tha chak zâwkte thawh chi hna rorum Deborin a thawk tlat mai hian a huaisenzia a pho lang Chiang hle a ni.



Debori hian Ephraim tlâng rama Rama leh Bethel khaw inkâra tûm thing hnuaiyah ÷uin ro a rêl ÷hîn a. He hmunah hian thu buai neite chu lo kalin Debori hian a lo rem ÷hîn a ni. Thu buai rem bâkah Israel mite chuan an kal dân tûr te ngaichângin Debori hi an pan bawk ÷hîn. Hetiang hna thawk tûr hian Pathian aṭanga finna leh hriatna thûk bîk nei mi nih a ngai a, chu hna ropui tak chu Debori hian a thawk a ni.

Rorêltute zîngah Samuela leh Debori chiah hi rorêltu leh zâwlnei nihna nei kawp an ni. Thuthlung Hlui hmeichhiate zîngah mi panga chauh zâwlnei hming pu an awm a, chûng zînga pakhat chu Debori hi a ni bawk. Zâwlnei hna pawimawh tak pakhat chu Pathian hnên aṭanga thu lo thleng mipuite hnêna puan chhuah a ni a; chu bâkah chuan ram leh khawtlânga dikna leh thianghlimna a awm theihna tûra huaisen taka Pathian duh dân puan chhuah ÷hin hi a ni. Israel mipuiten zâwlneite thu leh hla chu ngaichângin an ngai pawimawh hle ÷hîn. Chutiang dinhmun ropui chu Debori hian a luah tel a ni.

Deborin ro a rêl hun lai hi Kanaan ram lal Jabin-an Israel-te a awp beh lai a ni a. Jabina hi lal chak tak niin thîr tawllailîr pawh zakua lai a nei a; hei hi hetih hun laia an râlthuum changkâng leh hlauhawm ber pakhat a ni. Kum sawmhnih chhûng ngawt Israel-te hi awp betin a lo tirethei tawh a. Israel fate hian an ngam lo hle ÷hîn a ni.

Debori hian Israel sipai hotu Baraka, Kedes-naphtali rama awm chu chahin Jabina sipaite bei tûrin a hrilh a. Baraka hnênah, “Tabor tlângah han kal langin, Naphtalia thlahte leh Zebuluna thlahte mi sîngkhat hruai rawh,” tiin thu a pe a. Sisera leh a hote chu Kison luih Pathianin a rawn tîr ang a, Israel sipaite kutah a pe mai dâwn niin Debori hian a hrilh a ni. Mahse, Baraka hi amah chuan a kal ngam ta hauh lo mai a. Debori hnênah chuan, “Mi kalpui la; tichuan, ka kal ang e; mi kalpui dâwn loh erawh chuan ka kal lo vang,” a ti ta bur mai a. Mipa huaisen leh chak zâwk tûra ngaihin hmeichhia Debori tel lova râl do tûra a chhuak ngam lo hi a mualphothlâk khawp mai.



Debori chuan, “Ka kalpui mawlh ang che; amaherawhchu, i kalnaah chuan hmingthat i hlawh dâwn lo a nih chu; Lalpan Sisera chu hmeichhe hnênah a hralh dâwn a ni e,” tiin a chhâng a. Debori sawi lâwk ang ngeiin Sisera leh a tawlailîr rual leh sipai tam takte chu Baraka hote chuan ûmin

an that fai ta vek a. An hotupa Sisera pawh tawlailîr aṅanga chhukin kein a tlânchhia a; Jaeli puan inah tlân lûtin a tawm zui a. Hetia a tawm a, puana a inkhuh lai hian Jaeli chuan puan in khenkillhna hmangin Sisera chu a that ta a. Debori hrilh lâwkna chu a rawn thleng dik ta chat a ni.

Debori huaisenna leh a ngheh tlatna chhan bulpui ber nia lang chu a hnêna inpuang ṭhîn Pathian thu a âwih a, a rin tlatna vâng kha a ni. Rorêltu ni thei tûr khawpa finna leh remhriatna a neihna chhan pawh a hnêna Pathian thu lo thleng a rin mai theihna baw kha niin a lang. Hmeichhe âwm nêw zâwk leh dâwihzep zâwk tûra ngaih pawhin Pathian a rin tlat chuan a nunah huaisenna leh nghehna, mipa thinlunga awm aia khauh zâwk leh belh tlâk zâwk a nei thei tih a chiang hle. Engkim ti thei Pathian rin tlat leh a thu âwih mai hi nun nghehna leh huaisenna bul chu a ni.

## Zawhna

1. Debori hi eng hnam nge a nih a, tu nge a pasal hming kha?
2. Thuthlung Hluia rorêltute khân eng hna nge an thawh ber ṭhin?
3. Debori hun laia Kanaan lal kha tu nge?
4. Debori huaisenna leh ngheh tlatna chhan kha eng nge?

## Berâmpu Rinawm lo

*Rammunmawii*

*Class VII*

*Govt. Zâwlsei Middle School*

Hmânlai hian berâmpu pakhat hi a awm a, mi hausa tak berâm rual a vênsak thîn a. Berâmte chu ei atân a ît thei êm êm a, rûk mai duh châng pawh a nei thîn a; mahse, a pu a hlauh avângin a ru ngam thîn lo a ni.

Ni khat chu, berâm chu a ît theih êm avângin a insûm zo ta ngang lo va, berâm pakhat chu ruin a talh ta a. A hnua a puin berâm rual a han hmuh chuan a berâm kim lo chu a hria a, a berâm vêngtu hnênah chuan a berâm bo chungchâng chu a sawi ta a. Berâm vêngtu chuan chinghne lian takin a seh palh tiin dâwt a lo hrihl a, a pu pawh chuan a âwih ve mai a.



A tûkah chuan berâmpu chuan berâm rual chu dai hnai maiah a thlah leh a, pakhat chu a talh

ru leh ta a; a puin a berâm an kim lo tih hriaa a chhan a han zâwh leh chuan Berâmpu chuan a pu hnênah chuan, “Sihalin a lo seh leh palh hlauh mai a, ka lo hrilh theihnghilh palh che a ni” tiin dâwt bawk chu a hrilh leh ta a.

Hun a liam ve zêl a. Ni khat chu berâm neitupa chu khawpuia an chhûngte tlawh tûrin a kal dâwn a, a berâm vêngtu hnênah chuan, “Khawpuiah ka zin lawk dâwn a, ka berâmte hi i kutah ka hnutchhiah dâwn a, ðha takin lo enkawl ang che” tiin a chah a. A pu a kal liam hnu chuan berâmpu chuan berâm chu a duh zât zât a talh ta a, a ðhen chu enkawl ðha peih lovin hliam na tak tuartein a dah bawk a.



Chawlhkâr khat hnuah chuan a pu zin chu a lo haw a, a berâm chu an kim lo nual tih hriain; hliam tuar leh thi pawh an awm nual tih a han hmuh chuan a berâm vêngtu hnênah chuan thil awmzia a zâwt ta a. Berâmpu chuan, “Ka pu, i zin bo hlân khân ni khat chu chinghne rual an lo kal a, lo dan ka tum pawhin ka dang thei si lo va, i berâmte hi an rawn seh ta ðeuh mai a ni” tiin dâwt



bawk chu a lo hrilh leh a. Mahse, an ram thenawm lawka awm pa pakhat chu an bulah a lo kal a, berâm neitu hnênah chuan, “I berâmpu hian dâwt vek a hrilh che a nih kha, i awm loh apiangin i berâmte hi a duh zât zât a talh thîn a, ka lo hmu ru reng thîn alâwm” tiin a rawn hrilh ta mai a. Berâm neitupa chuan a berâm tam tak an bo tih leh tam tak hliam an awm tih a hmuh chuan a rilru a na ta hle a, a berâmpu lakah chuan a thin a rim ta êm êm mai a, a berâmpu chu a hna ațanga a bântîr mai bâkah a berâm a talhsak zawng zawng manah pawisa tam tham tak a chawitîr ta bawk a ni.



A rinawm loh rah sengin berâmpu rethei ve tak chuan an chhûngkaw pawisa neih zawng zawng chu a chên phah ta vek a ni.

*A thu zirtîr: Mi rinawm lote chu chhiatnain a zui thîn.*

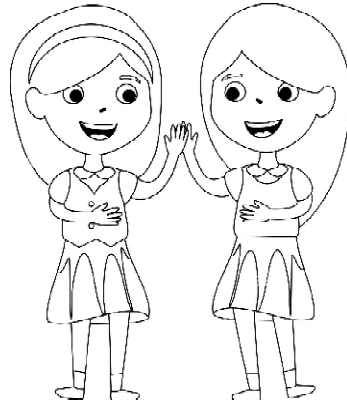
*He thawnthu tâwi hi Govt, Zâwlsei Middle School Class VII Mizo subject Art Education Activity atâna thu inziahsiaka zirlâi naupang ziak a ni.*

## Naupang Khawngaihthlâk

*Annie Lalremthuangi  
Junior Department  
Vaivakâwn Vêngthlang Kohhran*

Hmânlai hian naupang khawngaihthlâk tak mai hi a awm a, a hming chu Ruatruati a ni a. Kum thum a tling chauh tihin a pain a thihsan avângin a nu nêh chauh an awm a ni. A nu chuan amah enkawl a ngaih avângin hna a thawk mumal thei lo va, an khawsak pawh a harsat pah êm êm a ni. Kum thum vêl a ral hnu chuan a nu chuan Ruatruati chu fahrah enkawl na inah a dah a. A nu chuan, “Ka fanu ka tih palh a ni” tiin a kalsan ta a.

Ruatruati chu mi thar a nih avângin an lo hmusit êm êm a. Vawi khat chu hmeichhe pakhat Daisy-i chu a bulah a lo ðhu a, ðhian atân a lo sâwm ta a. Tichuan, an pahnih chuan khawvêla ðhian ðha ber an lo ni ta a ni.



Ni khat chu Ruatruati nu chu fahrah enkawl na hmunah chuan lo kalin a fahrah enkawltute bulah chuan, “Ka fanu rawn la tûrin

ka rawn kal” a ti a. A fanu Ruatruati chuan, “Min duh lo va, fahrah enkawl na inah min dah a nih kha” a lo ti thung a. A nu chuan, “Ka fanu, i lo haw duh loh chuan rawn hruai tûr che hian ka rawn kal tawh ngai lo vang” tiin a kalsan ta a.

Ruatruati leh a thian Daisy-i ten an nu leh pa chungchang an hriat an lo sawi mial mial lâi chuan an warden chuan rawn au vin, an pahnih zînga a tu emaw zâwk zâwk chu nupa pakhat hian an rawn lâk tûr thu chu a hrilh a.

A tûkah chuan anmahni la tûr chuan Pu T. Sailo leh Pi Mary Sailo te nupa chu an lo kal ta a. Ruatruati chu a nungchang a that zâwk avângin lâk chu an tum ta a. An thian dun inkawm tâwpna ber ni dâwna an hriat avâng chuan Ruatruati chuan, “Daisy, min theihngihl suh aw” tiin a kalsan ta a.

Ruatruati latu Pi Mary Sailo chu Tiny Tots School-a an Principal a lo ni reng mai a, an nupa chu mifel tak leh mi tanpui ngaite tanpui thîn niin School te pawh Pathian malsâwmna avânga din thei niin, mi awm thei tak mai an lo ni reng mai a.

Kum li vêl a ral hnu chuan Daisy-i chu fahrah in aţang chuan nupa pakhat hian enkawl tûrin an la chhuak ve ta a. Amaherawhchu, Daisy-i latute chu mi tha lo tak an lo ni a. Daisy-i mamawh leh duh pawh chu leisak loin a rûkin an rûksak ta thîn a. Chûng avâng chuan Daisy-i pawh chu a lo sual ve ta êm êm mai a.

Ruatruati chuan nuam leh hlim takin hun a hmang chho zêl a, lehkha pawh a thiam thei êm êm a, naupang dangte pawhin an awt ta êm êm a. Daisy-i thung chuan sual lam kawng zawhin a hun chu hrehawm leh harsa takin a hmang ve thung a, ðhian sual tak takte kawmin mi zawng zawngin an hlahu êm êm a lo ni ta a ni.



Kum 19 an lo nih chuan Ruatruati chuan ðha takin Class XII te pass-in college hial a lo kal ve ta a, Daisy-i erawh chu misual tak tak bulah awmin jail-ah hial dah luh a lo ni ta a ni. Ruatruati chuan a ðhian Daisy-i chanchin a lo hriat chuan a khawngaih ta êm êm a, jail-ah chuan a tlawh deuh reng a, ei tûr leh thawmhaw te a kensak ðhîn a. Pathian chhandamna a chan theih nân nasa takin a ðawngtai ðhîn a ni.

Hun a lo kal zêl a, Daisy-i pawh chu jail aþanga lo chhuakin Pathian khawngaihna changin a lo piangthar ve ta a. Tichuan, Ruatruati chuan amah enkawltute bula a dîlsak angin an hnênah chuan nun bul ðan thar tûrin hlim takin a awm ve ta a ni.

## Tumruhna

*Esther Lalnunfeli*  
*Senior Department*  
*Chawnpui Kohhran, Aizawl*

Khawvêlah hian mi tumruh leh mi rorum tam tak sawi sên loh an awm tih kan hria ang. Kan ngaihsân êm êm Sap-ho zîngah te, Korean-ho zîngah te, Negro-ho zîngah te leh keini Mizo zîngah ngei pawh mi tumruh leh rorum, hlawhtling sawi tûr tam tak kan hre âwm e. Lehkhabuah te pawh hetiang mi tumruh leh hlawhtling chanchin hi kan lo chhiar tawh hlawmin ka ring.

India rama kan hotunu ber India President chu Draupadi Murmu a ni. He nu ropui tak, India rama mihring tam tak leh mi ropui tam tak awmnaa hmeichhia President ni thei ngat a ni a, a ropui khawp mai. India rama hnam hnufual leh hmuhsit Santal chhûngkaw rethei tak aţanga lo pianga seilian a ni a. A tumruhna leh a tawrhchhelna chuan rah duhawm tak a chhuah a, khawvêla hmeichhe ropui zînga chhiar tel theih hial a lo ni ta a ni.

Pi Murmu-i te hi an retheih ţhinzia leh an naupan laia an harsat ţhinzia ngaihtuah chuan tuna an dinhmun hi thleng thei tûrah an inring kher lo

ang. Mahse, an thleng miao si a, a chhan chu a tumruhna vâng liau liau a ni.

Mizo-ah pawh entawn tlâk tam tak an awm nual a. Pastor Fehtea hi kan hre lo mai thei a, a hming hi a mak reuh êm a. Fehtea an tihna chhan pawh an retheih êm avângin naupang tê a nih lai aţangin a nu leh pate zuiin lovah te a feh ve thîn a. Chuvângin Fehtea an ti a, a hming tak chu Kawlkhûma a ni a.

Harsa takin lehkha a zir a, a tumruhna avângin Missionary Sap-hovin an duh êm êm a, an enkawl a, Pastor chhuanawm tak a lo ni thei a ni. Mizo zîngah hian Pastor chhuanawm sawi tûr tam tak an awm ang. Pastor Zâirema te, Pastor Vânlalbela te leh mi dang tam tak an awm thei ang. Mi hlawhtling tam tak an awm a, kan sawi vek sêng lo ang.

Keini Kristian naupangte pawh hian tûna kan dinhmun chu eng pawh ni sela, nakinah mi ropui leh mi chhuanawm tak kan la ni thei a ni tih hi kan hriat a tha hle mai. Kan lehkha zirnaah taima tak leh tumruhna nen zir ila, hnathawh hreh lovin chhûngte puiin taimâkna nêh tûn aţanga tih tak zeta kan beih chuan mi hlawhtling kan ni vek thei a ni. Mi tumruh leh mi hlawhtling ni tûrin beidawng mai lovin bei hrâm hrâm ila, nakinah chuan mi hlawhtling tak leh mi hriat hlawh kan la ni ve mai dâwn a ni.



## N. Vanlaiphâi Kohhran Naupang leh Tleirâwl Chawhnu Inkhâwm

North Vanlaiphâi Kohhranah hian Sunday School zirlaite tân mumal taka inkhâwm kalpui a nih theih nân - Naupang Chawhnu Inkhâwm leh Tleirâwl Chawhnu Inkhâwm tiin ðhen a ni.

### Naupang Chawhnu inkhâwm

Naupang Chawhnu Inkhâwmah hian Beginner, Primary leh Junior Department naupangte leh zirtîrtute an inkhâwm ðhîn a. He hunah hian zirtîrtuten inkhâwm kaihruaiin ðantuah naupang ruat an ni ðhîn. Tin, naupangten zai hruai hna thawkin, Junior Department naupangten zâi an hruai ðhîn a ni.

Inkhâwmah hian zirtîrtuten Pathian thu lam hawi zirtîrna nei ðha thawnthu te sawiin hun hman ðhîn a ni a. A châng chuan cartoon/movies zirtîrna nei ðha te pawh en ho ðhîn a ni bawk. Tin, variety programme te hmangin naupangten chanvo hrang hrang neiin hun hlimawm tak hman ðhîn a ni. Bible châng leh hla te zirin hun remchângah Biak Inah puan chhuah ðhîn a ni bawk.

Kumin kum tâwp lamah hian hun remchângah intihhlimna neiin naupangte outing neihpui tum a ni bawk a ni.



## **Tleirâwl Chawhnu Inkhâwm**

Tleirâwl Chawhnu Inkhâwm hi mumal taka kalpui mêk a ni a. Hetah hian Intermediate, Sacrament leh Senior Department te leh zirtîrtute an inkhâwm thîn a ni. He hunah hian inkhâwm hruai hna hi a tam zâwk chu zirtîrtute kutah a awm thîn a, tantu erawh chu tleirâwlte aţanga ruat thîn a ni.

Tleirâwl Chawhnu Inkhâwmah hian zirtîrtuten Pathian thuchah tâwi leh nun kawng an hman chhoh zêlna tûr atâna kawng dik kawhhmuhna lam hawi bâkah Missionary ropui tak takte chanchin leh harsatna tam tak kêra mi hlawhtlingte chanchin sawi thîn a ni. Hetih rual hian anmahni pual programme siama hun hman châng a awm bawk a, variety programme a khât tâwka neihpui thîn an ni.

Tleirâwl Inkhâwm hi Group thumah then a ni a. Inkhâwm kal hma leh inkhâwm hrim hrim inchhiarna te neiin Group inel nân hman a ni thîn. Bible châng en lova sawi tûr neiten chawhnu inkhâwm bânah zirtîrtute hmaah sawiin, an Bible châng sawi zât chhinchhiah thîn a ni a, kum tâwpah Bible châng sawi tam lâwmman pêk tûra ruahman a ni bawk a ni. Tualchhûng kohhranin a beisei angin Kohhran Special Programme bâkah kohhran inkhâwm hun bi pangngaiyah te, Pathian fakna hla an puang chhuak thîn.

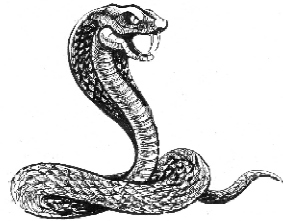
Tin, Tleirâwl Chawhnu Inkhâwm hi ţawngţai Bethel neihpui thîn an ni a, a hlâwkthlâk thîn hle, hei hian an thlarau nun nasa takin a pui thîn a ni.



# Hriat Zauna Huang

**Rûlngân (King Cobra) hian rûl dang ni lo hi chawah a ring ve tho em?**

Rûlngân (King Cobra) hi a Scientific hming chu Ohiophagus hannah an ti a, Ohiophagus tih hi Latin ɽawng aɽanga lâk niin a awmzia chu “RÛL EITU” (Snake eater) tihna a ni. A hming aɽang pawh khian Rûl eitu a ni tih a hriat chian theih ang.



Rûlngân chaw duh ber chu rûl chi khat, sazu rûl (Rat snake) an tih hi an ni a, hêng rûlte hi sazu ei ɽhîn an nih avângin mihring chênna bula sazu ei tûrin an awm ɽhîn a, sazu ei ɽhîn rûlte hi Rûlngân chaw duh ber an nih avângin Rûlngân te hi mihring chênna bulah an awm phah ve fo ɽhîn a ni. Rûlngân hian rûl dangte pawh a ei ɽhîn a, rûl dang ei tûr a hmuh loh chuan laiking (lizards) te, sava te



leh sazu te an ei ve mai thîn a ni, Rûngân pa hian tûr a pai tam hle a, sai hi chuk ta se, a chuk aţanga darkâr thum vêl chhûngin an thi nghâl mai thîn a ni.

Rûngân hi khawvêla rûl tûr nei zînga hlauhawm ber pâwl a ni a, Asia chhim lam leh chhim chhak lamah an awm ber a. A tûr hi a chak hle a, mihring hi a chuk aţanga minute 30 vêlah an thi mai thîn. Rim hriat theihna leh khawhmuh theihna chak deuh a nei. A lei kâk hmangin a ei tûr rim a hriatna bâwmpuiah a thawn a. Chumi rual chuan a lei hmangin a ei tûr awmna hlat zâwng a hre thei bawk. Hemi bâkah hian a mit hi a chak hle a, a ei tûr che vêl hi metre 100 vêla hla aţangin a hmu thei a ni. Rûngân hi a tlângpuuin feet 10 aţanga 13 vêla sei an ni a, a sei ber an chhinchhiah chu feet 18 leh inches 9 a ni. Chhûnah chaw an zawng ber a, zânah erawh chuan hmun kilkâr vêlah an tawm mai thîn.

Rûngân danglamna tak chu an tui dâwnin bu an chhep thîn hi a ni. A pui hian a tuina tûr bu hi ni li chhûng vêl a la khâwm a, a tui zawhin a bu tûr a lâk khâwm chuan a vûr a, a chungah chaw ei lovin thla thum aţanga thla li vêl bawkin a awp lum thîn a, a tui a rawn keu hnuah a kal sawn chauh thîn a ni.

*Thulâkna: Hringnun zawhna-Lei leh Mihring by Dr Lalnunsiana Colney*



Tleirâwl leh naupang lam inkhâwm taima lo, lehkha chhiar peih lo ka hmu fo mai. Tam tak chu an hlawhchham a, nun kawng an zawh dik t̄hîn lo.

Inkhâwm leh lehkha chhiar hi hlawhtlinna atân a t̄ha a, mihring nun atân leh thlarau lam t̄hatna a ni bawk! Inkhâwm leh lehkha chhiar chungchângah hian hla phuahtu ropui George Frederick Handel-a chanchin t̄un t̄um chu ka han sawi teh ang.

GF Handel-a hming hi Mizo kristiante pawhin kan hre deuh vek ang. Halleluiah Chorus phuahtu tiin kan hre fur ang. A chanchin pahnih lek han sawi ila.

1. **Lehkha a chhiar zâu:** Lehkha chhiar zâu tak mai a ni a. A hun laia literature t̄ha, Thu leh Hla ziak thiam ropuite thuziak kha a chhiar nasa. A lehkha chhiar behchhanin hla pawh a phuah nual nghe nghe. A b̄ikin, John Milton-a kut chhuakte a ngaina zual.

Milton-a Lemchan thawnthu, 'Samson Agonites' behchhan khân oratorio pakhat Samson tih kha a siam a. Hla pakhat 'L' Allegro ed il penseroso' kha Milton-a kut chhuak a t̄anga a siam a ni bawk a. French lemchan thawnthu ziak thiam Jean Racine thuziak behchhanin Esther tih leh Deborah leh Athalia a siam bawk a ni. Lehkha

chhiar hi puitlin nân, thil ̣a tih nân, thil ropui tih nân a ̣ulin a ̣angkâi a ni.

**2. Inkhâwm taima:** Handela kha inkhâwm taima êm êm mai a ni. A inkhâwmna ̣thin St. George's biak in pawh tun thlengin a la ḍing a ni. A mit a lo del hnu phei chuan rual a p̄awl mumal tawh lo a. Inkhâwm ngawr ngawr kha a tuipui chho ta a ni an ti. Keini chu kan ropui deuh deuh a, inkhâwm kan ngaihtuah lo telh telh ̣thin a. GF Handela chu inkhâwm tuipui êm êmin, Lal Isua hnênah a haw leh ta a ni.

Inkhâwm duh lo tân Lal Isua hnên a thlen theih loh. Chutichuan, Kristian Naupang leh Kristian tleirâwlte chuan lehkha chhiar taimain inkhâwm thlah thlam lo ang u. Kan mihring nun atân, kan thlarau nun atân a hluin a ̣a ber a ni.

---

### **Khawngaihtu**

*Kutdawh i hmu ngai em? Mizoramah chuan kutdawh an tam vak lo. India ram khawpui hrang hrangah chuan an tam thei hle. A nih leh, nu leh ̣a enkawl loh fahrah enkawlina inah i kal tawh em? Damdawi inah damlo tam tak i hmu tawh ngai em?*

*Kan mihringpui, vanduinâ tâwk te, thawmhnaw thar nei ve theilo te kan hmuh chuan kan khawngaih tûr a ni a. Kan theih tâwka ̣anpui kan tum tûr a ni. Khawngaihna nei lo mi chu khawngaih an hlauh lo vâng a, mi khawngaih thei tak chu Pathian ̣awhin a khawngaih ve dâwn a ni.*



Bible hmanga chhân târ zawhna kan rawn dah leh ta. Eng zât nge kan chhân theih i han enchhin teh ang u aw:

1. Israel mite sala an tâna ram kha eng nge?

Chhâna: .....

2. Israel faten chaw leh sa an mamawh khân Pathianin eng nge a pèk?

Chhâna: .....

3. Joasa kha kum eng zât a nihin nge a lal?

Chhâna: .....

4. Solomona khân Pathian hnênah eng nge a dîl?

Chhâna: .....

5. Isuan phâr sâwm a tihdam zînga mi eng zatin nge Isua hnênah lâwmthu sawi?

Chhâna: .....

6. Abrahmaman sasaw thing bulah khân tute nge a hmuh?

Chhâna: .....

7. Biak ina fa dîla tawngtai thîn kha tu nge?

Chhâna: .....

8. Hani hming awmzia eng nge?

Chhâna: .....

9. Samsonan sihal eng zât nge a man?

Chhâna: .....

10. Jeriko khaw bula mittel kha tu nge?

Chhâna: .....

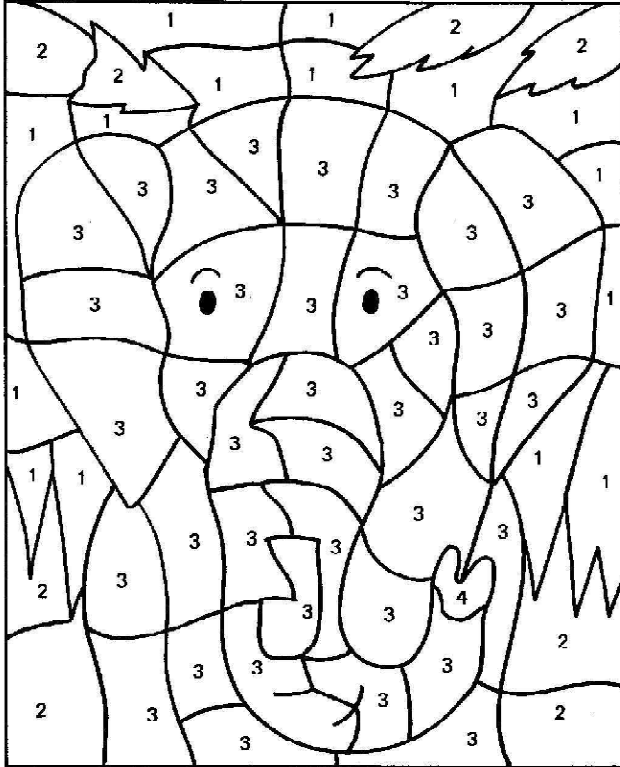
*Note: December thlaah a chhâna târ lan a ni ang.*

**October thla Quiz chhâna:**

- |              |                |                |                  |
|--------------|----------------|----------------|------------------|
| 1. Phîra     | 2. Thoma       | 3. Damaska     | 4. Meditteranean |
| 5. Petera    | 6. Matthia     | 7. Olive tlâng | 8. Vasti         |
| 9. Mordekaia | 10. Johoiakina |                |                  |



# CHEI RAWH LE!



1= Blue

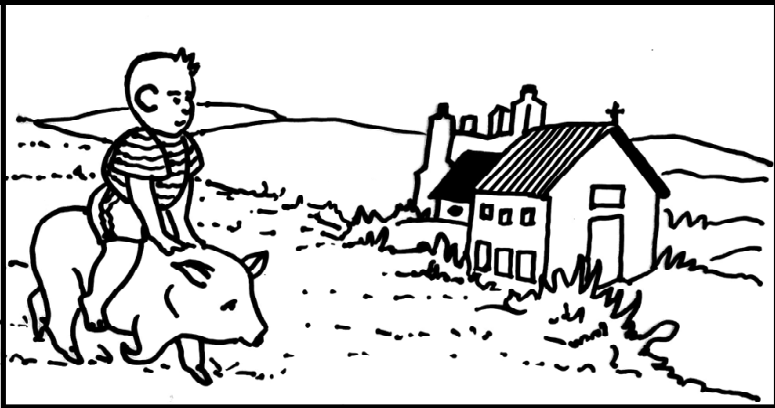
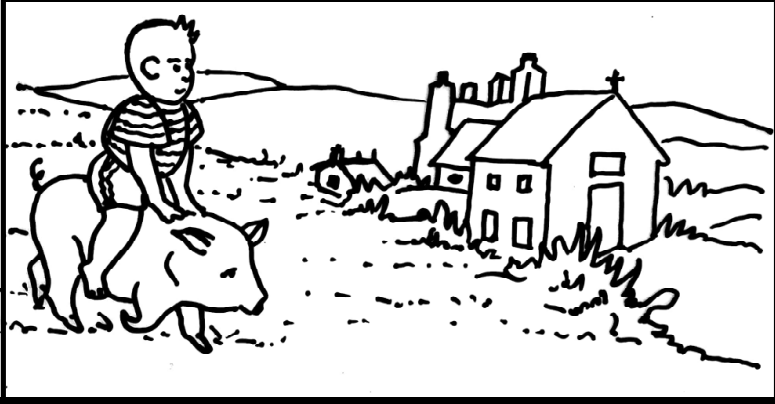
2= Green

3= Grey

4= Pink



# KA HMUH ANG HMU THEI RAWH



A chung a lemziak chi hnih khi ngun takin en la, a inan lohna chi ruk hmu thei rawh.

1. ....
2. ....
3. ....
4. ....
5. ....
6. ....



VBS, Serchhip Bethel Kohran



Junior Department, Mission Veng Kohran

Kristian Naupang-a thu chhuah tûr nei tân  
kristiannaupang@gmail.com-ah emaw,  
Whatsapp hmangin phone number 8974581885-ah  
emaw theh luh theih reng a ni e.

To

---



**N.VANLAIPHAI KOHHRAN  
NAUPANG CHAWHNU INKHÂWM  
LEH  
TLEIRÂWL CHAWHNU INKHÂWM**



Published by Rev. Lalbiaknia  
Synod Literature & Publication Board, Aizâwl and  
Printed at the Synod Press, Mission Vêng, Aizâwl - 796001. Copies - 32,500