

ESTD: October 1994
THLA TIN CHHUAQ CHANCHINBU
Kum khat lâk man ₹50

MAY 2026

Postal Registration No. MZR/70/2024-2026
RNI Registration No. 66996/96

Kristian Naupang



Vol. 31 No. 8

An Chanchin:
Lungdâi Kohhran
Tleirâwl leh Naupang Inkhâwm

MSSU LEH SYNFO BUATSANH RECITATION INTIHSIAKA LÂWMMAN PAKHATNA LATUTE



LALSANGLIANI
Pakhatna
(Intermediate-Senior Department)



Malsawmzeli Hauhna
Pakhatna
(Beginner-Junior Department)

• AIA UPATE HNIAL THAT LOHZIA • HARSATNA
• TAWNGTAI HLUTNA • PATHIAN HMANGAIHNA
• HLAWHTLINNA

Kum 31-na

May 2026

Bu 377-na

Editor

Zohmangaiha

Managing Editor

Rev. PB Zosaphara

Joint Editors

Rev. F. Lalhuanawma

Rev. Dr KM Vanlalpeka

F. Vanlalrochana

Eric Lalnunmawia

Circulation Manager

Lalfakzuala

Kristian **Naupang**

Synod Office, Second Floor

Mission Vêng, Aizâwl - 796001

email: kristiannaupang@gmail.com

Mobile: 6909132893

A man pe duh leh a bu la duh chuan

Circulation Manager hriattîr tûr a ni.

Kum khat lâk man ₹50

Kristian Naupanga thu chhuabte hi Editor ngaih dân a ni vek kber lo.

A chhônga thu awmte

Phêk

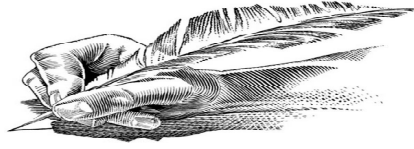
1. Editorial1
2. Harsatna 2
3. Aia upate hnial that lohzia3
4. MSSU leh SYNFO buatsaih recitation intihsiaika lâwmman pakhatna latute chanchin4
5. Tawngtai hlutna8
6. Pathian hmangaihna11
7. Huan mâwi13
8. Rinna16
9. Hlawhtlinna19
10. An Chanchin: Lungdâi Kohran NPSS Inkhawm21
11. Hriat zauna23
12. Hmutheitua28
13. Quiz30
14. Chei rawh le!31
15. Ka hmuh ang hmu thei rawh32

HRIATTÎRNA

Kristian Naupang-a thlalâk chhuah tûr nei tân whatsapp hmangin

phone number 8974581885-ah emaw theh luh theih reng a ni

Editor, Kristian Naupang

Editorial**SIKUL KAI**

Chawlh rei vak lo kan hman hnuah Kristian naupang leh tleirâwlten zirna kum thar atân sikul kan lo kai ãan leh ta a. Tûn ãum chu kan châwl rei lo deuhva, chawlh kan kham lo viau em aw?

Sikul kai hi nuam kan ti nge, kan ti lo zâwk? Nuam kan lo ti lo palh a nih chuan eng nge a chhan ni ta ang? Sikul kai hi kan tih tûr a nih tih pawm thlap a, nuam ti taka kai ãhin a pawimawh hle.

Sikul kan kai chhan te hi kan lo ngaihtuah tawh ãhin em aw? Sikula kan kai chhan chu nakinah lehkha thiam, mi puitling leh mi hman tlâk kan la nih theihna tûrin a ni. Chutiang mi kan nih theihna tûr chuan kan kum mîl tâwka buatsaih zirlai bute kan zir a. Zirlai bua chuang bâk pawh kan zirtûrtuten nungchang mawi leh thil dang tam tak min zirtûr ãhin a ni. Kum bul aãang hian taima takin lehkha zir ila, exam-a pass satliah ringawt tum lovin, kan zirlaite thiam ngei i tum ãhin ang u.

Naupang tam tak, an chhûngkua leh an ram a retheih êm avânga sikul an kai theih loh laia sikul kan kai thei bîkte hi kan vânehzia hre thar ila, taima takin lehkha i zir sauh sauh zêl ang u.

HARSATNA

*Erica Lalrammawii
Intermediate Department
Vânchêngpui Kohhran*

Harsatna hi mi tin hian kan tâwk vek âwm e; amaherawhchu, chu kan harsatna hi a inang vek lo va. “I tuar a zuau,” kan tih mai mai lai hian; engtin nge a tawrh ang, eng ang taka nâ nge ni ang tih hi kan ngaihtuah ve a ngai a ni.

Keini pawhin harsa kan tih êm êm hi mi dang tân chuan ho tê, thil tê tham mai a ni ve thei a. Tin, hetiang harsatna kan lo tâwk a, harsa kan ti viau a nih pawhin, Pathian hnênah thlen ila, amah chuan engkim a ti thei a. Kan nun a beidawn êm êm lai pawhin mahni intihrehawm mai lovin, a êng zâwnga thil thlîr zêl i tum tlat ang u.

Kan harsatna hnehna tûra thil pawimawh êm êm pakhat chu ÷awngtâina hi a ni. Kan ÷awngtâi tam chuan kan harsatnate chu Pathianin min lo hriatsakin, min tihdamsak mai dâwn a ni.

÷awngtâina hian thil a tih theihzia hria ila, ÷awngtâi tam ila; tichuan, kan harsatnate chu Pathianin a lo la kiang zêl mai dâwn a ni tih i hre reng ang u.

AIA UPATE HNIAL ȚHAT LOHZIA

Isak Lalrinmawia

Mamit Kohhran

Hmânlai hian hmeichhe naupang pakhat hi a awm a, a hming chu Lawmpuii a ni a, naupang fel leh thu âwih thei tak a ni. A Țhiante nêan inkâwm Țhîn a. Sikul chawlh apiangin thil an ti ho Țhîn a ni.

Ni khat chu a Țhiante nêan luiah kal an tum a. A nu chuan, “Bawihte kal lo mai rawh u, tûn ang laiah chetsualna a tam tawh si a,” a ti a. Lawmpuii chuan, “Ka nu, kan chesual lo vang,” a ti a. Luiah chuan a nu phal lo chung chung chuan an kal ta a.

Lui an zuk thlen chuan nuam an ti hle a. Chutia nuam ti tak leh hlim taka an awm lai chuan vânduaithlâk tak maiin Lawmpuii chu a chesual ta hlauh mai a. A Țhianten chhan an tum a, an chhan hman ta lo va. Luiah chuan a tla hlum ta mai a. A Țhiante chu mangang takin an awm a. Lui ațang chuan an la chhuak thei bawk si lo nêan, an rilru a hah tlâng hle a. Tichuan, Țanpuitu tûr zawngin Lawmpuii Țhiante chu an kal ta a ni.

A zirtîr: Aia upate thu hniâl loh va, “Ti rawh, ti suh,” an tih chu zawm mai tûr a ni.

MSSU LEH SYNFO BUATSAIH RECITATION INTIHSIAK REPORT

MSSU leh Synfo ƣangkawpin Sunday School naupangten Pathian thu hriatna kawnga hma an sâwn theih nâna an buatsaih NPSS Recitation intihsiaik chu tluang taka neih a ni. Intihsiaik hi Naupang Sunday School, Beginner Department aƣanga Senior Department inkâr tâna buatsaih a ni a, group hnihah ƣhen a ni. Group 1-ah Beginner Department aƣanga Junior Department a ni a, group 2-ah Intermediate Department aƣanga Senior Department te an ni. Intihsiaik elimination round hi March 19, 2026 (Ningani) khân Presbytery hrang hranga kohhran 20-ah neih a ni a. Elimination round-ah hian naupang 640 vèl an tel a, an zîng aƣang hian mi 105-in elimination round an paltlang a ni.

March 25&26, 2026 chhûng khân Chaltlâng Presbyterian Kohhran Centenary Hall-ah elimination round paltlangten intihsiaikna an chhunzawm a. Result puan leh lâwmman sem a ni bawk.

Intihsiaika lâwmman dawngtute chu:

Group I: (Beginner Department - Junior Department)

Pakhatna	-	Malsawmzeli Hauhnar d/o H. Lalhlimpaui, Junior Department, Aizawl Venglai
Pahnihna	-	Eva Lalnunthangi d/o JH Chunglianthanga, Junior Department, Bawngkawn

- Pathumna - Lalramnunhlui Khiangte
d/o K. Lalbiaktlinga
Junior Department, Rengdil
- Group II: (Intermediate Department - Senior Department)*
- Pakhatna - Lalsangliani d/o Lalruatfela
Senior Department, Zemabawk
- North
- Pahnihna - Lalbiakdiki d/o Lalhmgangaihsanga
Senior Department, E. Lungdar
- Pathumna - Marthi Malsawmzeli
d/o C. Lalmuankima
Senior Department, Kolasib Venglai

Intihsiakah hian lâwmman pakhatnain ₹ 50,000/- leh citation, pahnihnain ₹ 30,000/- leh citation, pathumnain ₹ 20,000/- leh citation an dawng a, Top 10-a tlingten ₹ 5,000/- theuh an dawng bawk a ni.

Lâwmman pakhatna latute chanchin tawi:

Lalsangliani

Lalsangliani hi kum 2009, June 5-ah Zemabawk North-ah a piang a, a nu hming chu F. Lalchhuanmawii niin, a pa hming chu Lalruatfela a ni. Tûnah hian St. Paul's Higher Secondary School, Tlangnuamah pâwl 12 (Science) a zir mêk a ni.

Lalsangliani hi naupang thu âwih leh tihnuam tak a ni a, zirna lamah pawh a tluang chho hle a, 42nd Mizoram State Level Science, Mathematics & Environment Exhibition and Edutech Festival, 2024-ah khân Mizoram pumpuiah pahnihna hauvvin, North-East Science Fair-

ah Mizoram aiawhin a lo tel tawh bawk. Amah hi thu leh hla (literature) lamah a tui hle a, naupang tê a nih lai aţangin poem phuah te, thawnthu phuah te nuam a ti ţhîn êm êm a, Junior Department a nih laiin Kristian Ţhalai Pâwl, Zemabawk North-ten kum 31-na an tlin puala thawnthu inphuahsiak an buatsaihah lâwmman pahnihna a lo la tawh a ni. Kum 2021 khân “The Princess with a Sewing Kit” tih thupui hmangin English Novel a lo tichhuak tawh bawk. Tûn hnuah pawh hian thawnthu chu han phuah leh ţhîn mah se, zirna lama a buai deuh tawh avâng hian a puitlin hlei thei rih lo a ni.

MSSU chawimawina, Zalawra Medal pawh a lo dawng ve tawh a. Beginner Department aţangin inkhâwmpuiah recitation sawi ŷan chhovin, Sacrament Department a nih thleng khân naupang inkhâwmpui apiangin recitation a sawi ţhîn. Kum 2018 Primary Department a nih laiin India ram Presbyterian Kohhran Thurin 1-10-na thleng khân naupang inkhâwmpuiah a lo sawi chhuak vek tawh bawk. Hei hian Pathian hriatna kawngah leh Bible hriatna kawngah a pui nasa hle. Tin, amah hi debate lamah a tui êm êm bawk a, kohhranah leh zirna in lamahte pawh group aiawhte pawhin a chhuak fo va, lâwmman pakhatna leh pahnihna-te a la tawh ţhîn a ni.

Elimination round-ah Jeremia 14:1-10, 19-22-na sawiin final round a lût a. Final round-ah Kristian Hla Bu 207 leh 233-na chu a sawi a ni. Hetia an inbuatsaih lai hian a chhûngte chuan “Lâwmman a tam ropui si, pakhatna i nih hlauh chuan pawisa i dawng ŷeuh dâwn a

nia aw,” te an han ti fiam a. Heta an fanu chhân dân chu, “A sum lam chu ngaihtuah lo vang u, Pathian ropuina tûr zâwkin,” tiin a chhâng thîn a ni.

Malsawmzeli Hauhnar

Malsawmzeli Hauhnar hi kum 2015, April 8 khân a piang a. A pa hming chu H. Lalhlimpuia a ni a, a nu chu J. Lalnunpuii a ni. Unau pali (4) zînga naupang ber a ni a. Amah hi mi zakzum tak leh mi inthlahrung chi a ni. Sunday sikulah pawh che sawn sek lo, a thutnaa thû char char thîn a ni a. Zirtirtute thu âwih leh tih tûr an tih ang chu thu âwih takin a hlen chhuak thîn. Sikul leh sunday sikul a kal bâk a hranpain a lêng chhuak ngai lo va, inah an unauvin an inkâwm mai thîn. Zan tin mut dâwnah Bible châng chhiarin, tawngtâina hun a hmang ziah thîn a, a Bible hi a lukham hnuaiyah a dah reng thîn. Tûnah hian Genesis aţanga bul tanin, Bible chhiar chhuah a tum mêk a ni. Sunday sikul kum tâwp exam hi Beginner Department a nih aţangin honours mark a la hmu ve ziah a, nikum exam kha a honours leh chuan Zalawra Medal a dawng ve thei tawh dâwn a ni.

Class I tih lohvah chuan kum tâwp exam-ah pakhatna nihna a hauh ziah a, kum 3 chhûng Student of the Year-ah thlan a ni tawh baw. An school-ah presentation hi subject pakhat angin mark a pu thîn a, a ti tha ber a ni ziah thîn. Tûnah hian Neuhof School, Chanmari, Aizawlah class-V a zir mêk.

Lehkhabu chhiar a ngaina hle a, mi dang tanpui hi a phâk ang tâwk tâwkah nuam a ti hle thîn a ni.

ṬAWNGṬAI HLOTNA

*Miriam Laldinkimi
Intermediate Department
Vaivakâwn Kohhran*

1. Ṭawngṭai awmzia: Ṭawngṭai hi Pathian nêna kan inbiakna leh a hnêna kan mamawh kan thlenna a ni. Kan ṭawngṭai hian Pathian nêna kan inbia tih kan hre reng tûr a ni a, duhdah deuhvin kan ṭawngṭai tûr a ni lo. Kan ṭawngṭai hian Pathian hnênah kan mamawh kan dîl ang a, lâwm thu kan sawi bawk tûr a ni.

2. Ṭawngṭai hlotna: Damlote tâna kan ṭawngṭai hian Pathianin a tidam ṭhîn. Kan ṭhiante emaw, kan chhûngte emaw, keimahni emaw kan dam loh hian Pathian hnênah kan dam theihna tûrin kan ṭawngṭai ang a, Pathianin min tidam leh mai dâwn a ni.

Kan mangana Pathian hnêna kan ṭawngṭai hian min pui ṭhîn. Kan mangan châng leh kan lungngaih chângte hian Pathian hnêna kan ṭawngṭai ṭhîn chuan Pathianin min chhâng ang a, min ṭanpui mai dâwn a ni.

Lusûn chhûngte tâna kan ṭawngṭaiin an thla a muang ṭhîn. Lusûn chhûngte hi kan ṭawngṭai pui ṭhîn tûr a ni a. Chutianga kan ṭawngṭaipui ṭhîn chuan Pathianin a thlamuan ngei ngei ṭhîn. Tin,

kan rilru a hah châng Pathian hnêna kan ṭawngṭai hian rilru thlamuanna kan nei mai ṭhîn bawk.

3. *Ni tin kan ṭawngṭai ṭhîn tûr a ni:* Kristian kan nih chuan hetiang hunah hian kan ṭawngṭai ngei ngei tûr a ni-

(1) *Zîng thawhhlîmah:* Zînga kan thawh hian thil dang ti hmasa lovin, Pathian hnênah kan ṭawngṭai ṭhîn tûr a ni. Zîngah dam taka kan thawh leh theih avângin Pathian hnênah lâwm thu kan sawi hmasa ṭhîn tûr a ni.

(2) *Chaw ei dâwnah:* Chaw kan ei dâwn hian Pathian hnênah ei leh in tûr ṭha tak tak min pêk avângin lâwm thu kan sawi hmasa tûr a ni. Thil kan ei dâwna kan ṭawngṭai hian Pathianin kan ei sual theihna lakah min vêng ṭhîn a, kan thil ei dâwnah kan ṭawngṭai ngei ngei ṭhîn tûr a ni.

(3) *Zân mut dâwnah:* Zânah kan mut dâwn hian Pathian hnênah kan ṭawngṭai ṭhîn tûr a ni. Nilênga min vên tawh hnuin, zânah mut hahdamna tûr min pêk avângin Pathian hnênah kan ṭawngṭai ziah tûr a ni.

4. *Ṭawngṭai ngai lote chu:*

(1) Pathian an be ngailo tihna a ni. Pathian pawhin amah be ngai lo chu a be ngai dâwn lo. Ṭawngṭai ngai lote chu an damloh pawhin Pathianin a tidam ve ngai lo vang. Ṭawngṭai hi Pathian kan biakna hmanraw pawimawh ber a ni.

(2) Ṭawngṭai ngai lote chuan Pathian an ring lo tihna a ni a. Pathianah an innghat ngai lo tihna a ni bawk.

(3) Amah ngaihsak lova be ngai lo leh ṭawngṭai ngai lote chu Pathian pawhin a ngaihsak ngai dâwn lo. Pathian be ngai lo leh ṭawngṭai ngai lote chu chêtusualna an tawh pawhin Pathianin a vêng lo vang.

(4) Ṭawngṭai ngai lote chu an nun a hlim lo va, an thil tihnaah an tluang ngai lo. Ṭawngṭai ngai lote chu eng anga hausa pawh ni se, an ṭawngṭai loh chuan an nun a hlim lo va, an tluang ngai lo.

(5) Ṭawngṭai ngai lote chu an inkhâwm ngai lo tihna a ni a, Pathian an be ngai lo tihna a ni bawk. Inkhâwm ngai lote leh Pathian be ngai lote chu an thih hunah hrehmunah an kal dâwn a ni.

(6) Ṭawngṭai ngai lo nu leh pate chuan an fate Pathian lamah an kaihruai thei lo. An naupan lai aṭanga an ṭawngṭai loh chuan an len hunah pawh an ṭawngṭai lo zêl ang a, thil sual an ti ang a, an thih hunah hremhmunah an kal dâwn a ni.

Ringtute tân chuan ṭawngṭai leh Bible chhiar hi kan râlthuum a ni a, ringtu kan nih chuan ṭawngṭai leh Bible chhiar hi kan tih ngei ngei tûr a ni. Tleirâwl/naupan lai aṭanga Bible ngaina chu an puitlin hunah mi ropui tak an ni ngei ngei ṭhîn.

PATHIAN HMANGAIHNA

*Lalnundika
Intermediate Department
Central Jail Vêng Kohhran*

Isua Krista chu kan sual avângin a thi a, chutah chuan Pathian hmangaihna ropui tak a lang Chiang a ni. Kan sual avângin hremna dawng tûr kan ni tawh a; nimahsela, Isua chuan keimahni aiin chu hremna chu a tuar a, kraws-ah a thi ta a ni. Ani chuan a thisen thianghlim hmangin kan sual a silfai a, Pathian hnênah min hruai leh ta a ni. A thihna leh a thawhleahna chuan keimahni tân chhandamna kawng a siam a, chatuan nun neih theihna tûr min kawhhamuh a ni.

Kan nunah kan tihsual a awm a nih pawhin, Isua chuan min hmangaih reng a, amah hnaih tûrin min ko a ni. Ani hnênah kan kala, kan sual kan puan chuan ani chuan min ngaidam ang a, min pawm ang a, kan nun min siam thar ang. Kan hrehawmna leh kan buaina zawng zawng pawh ani hnênah kan thlen thei a, ani chuan thlamuanna leh beiseina min pe thei asin.

Bible chuan heti hian a sawi, “Nimahsela, Pathian chuan a mi hmangaihna chu fâk tlâkin a lantîr a, mi sualte kan la nih laia Krista kan aia a thih avâng khân (Rom 8:5). Tin, Johana ziaakah

chuan, “Pathianin khawvêl a hmangaih êm êm a; chutichuan, a Fapa mal neih chhun a pe a, amah chu tu pawh a ring apiang an boral lohva, chatuanna nunna an neih zâwk nân,” tih a nih avângin Pathian hnênah kan nunte kan pe ang a, amahah chuan chatuan nun leh hmangaihna dik tak kan hmu thei dâwn a ni.

NU ZIRTÎRNA HAWISAN LOH

Thufing hi finna bu a ni a, finna chu Pathian aţangin kan hmu. Nun dân thiam min zirtîr a ni. A ngaihna hriatna, hmangchâng pawimawh tak an ni hlawm. Chûng thu zînga pawimawh tak ‘Nu zirtîrna pên-san loh’ hi fate zawng zawng tih tûr a ni. ‘Nu’ tih ţawngkam hi hnam tin, chi tin tân, naupang leh puitling thlengin thumal khaih chuan a hlu ber pâwl a ni. Nu, Pathian ţih mi neite chu an vânei hle a ni.

Pate chu fate zirtîrtu ni mah se, nute chu zirtîrtu ţha an ni. Nu zirtîrna hawisan lo tûra hrih kan ni (Thuf 6:20). Timothea chu a pi leh a nu zirtîrna a hawisan loh avângin rawngbâwltu ţangkai tak a ni zui ta a ni.

Nuten an fate thil ţha an hrih! Zâwm se harsatna tam tak an pumpelh ngei ang. An thinlungin, “I nungchang a bengchheng lutuka, i thusawi kan hre thei lo,” an tih loh nân nu zawng zawngte, Pathian lalna leh a kaihhruaina zâwmtu kan nih a pawimawh khawp mai.

HUAN MAWI

*Julie Ramngaihzuali
Senior Department
ITI Vêngchhak Kohhran*

Hmânlai hian huan mawi leh nalh tak mai hi a awm a, naupangte chuan nuam an ti thîn êm êm a, sikul an bân veleh hian chu huan mawi takah chuan an kal nghâl thîn. Chu huan chu a mawi êm êm a, savate chuan chu huana thingkûng lian leh mawi takah chuan fuin, hla mawi tak an sa ho dial dial thîn a; naupangte pawh chuan nalh an tih êm avângin an infiam lai pawh thulh meuhin an ngaithla thîn a ni.

Mahse, ni khat chu, chu huan neitute chu an rawn haw ta a. An zîngah chuan an fapa soal leh chimawm êm êm mai hi a lo tel ve bawk a, chu mipa naupang hming chu Michael-a a ni. A soal êm êm a, mi tihbuai a chîng hle bawk. Pathian thu pawh a âwih lo êm êm a, inkhâwm pawh a peih ve ngai lo a ni. An huan mawi tak chu amah pawhin a ngaina êm êm a, an ta a nih avângin a inti thei hle a, a inti neitu thei hle bawk.

Chutia an rawn haw a, an huana naupang dang an lo infiam a hmuh chuan a thin a rim ta êm êm a, naupangte bulah va kalin, “Eng nge kan huanah hian in tih,” a ti a, a au ta vak vak mai a. Chutia a

au chu naupang dangte chuan hlauvin an tlân darh ta vek mai a ni. Tichuan, Michael-a, naupang sual tak chuan, “Ka huan chu ka huan a ni. Kei chauh lo mi dang chu an infiam ve ka phal lo vang,” a ti a. Bang lian tak hi a siam ta luah mai a ni.

Chu mipa naupang Michael-a chuan a hma a sial êm êm a, naupang dangte pawh chuan infiamna tûr an nei ta lo va, an khawngaihthlâk hle a ni. Kawngpuihte chuan infiam an han tum thîn a; mahse, kawng chu a khuin lung lian tak takte chu a tam êm avângin nuam an ti lo va. An zirlaite an zir zawhah chuan bang lian tak vêlah chuan kal kualin, huan huan mawi tak chungchângte chu an sawi thîn a, “Sawta kan awm laia kan hlim thîn dân kha,” an ti thîn a ni.

Nipui a lo thlen chuan ram chhûng zawng zawngah chuan pangpâr mawi tak tak leh savate chu an awm tan a. Mahse, huan mâwi tak ni thîn Michael-a huanah thung chuan thlasik a la ni reng a, Pathianin Michael-a chu a sual êm avângin a hrem a ni. Savate chuan naupang anmahni lo lâwmtu awm lo chu zai pawh an zai peih ta lo va, thing leh pangpârte pawh chuan pâr nachâng pawh an hre ta lo va. Nipui chuan huan chu a theihngihl a, vûr chuan huana hnimte chu a khuh vâv vek a, thingte pawh chu an khawng vâv rup mai a ni. Thli pawh chu a tam êm êm mai a.

Michael-a chuan tukverha dâk chungin, “Engati nge nipui hi a rawn thlen theih tâk rêng rêng loh le,” tiin a sawi a. Nipui chu rawn thleng se a ti êm êm a; mahse, a rawn thleng thei si lo. Michael-a chuan a sual leh Pathian thu a âwih loh rah chu a seng ta a ni.

Ni khat chu a khuma mu chungin a inngaihtuah rauh rauh va, a inngaihtuah chhuak ta a. A tho va, huan pâwnah chhuakin, naupangho chu a ko va, an hnênah khawngaihna dîlin, an huanachte chuan lêng tûrin a sâwm a. Naupangte pawh chuan ðha takin an lo be lêt a; tin, biak inahte chuan an inkhâwm ho bawk a. Michael-a pawh Pathian thu âwihin a sualnate a inhre chhuak a; chuti chuan hlim takin an awm a, an huan pawh mawi takin a awm leh ta a ni.

MIZO ṬAWNG HMAN DIK NAN

Tûn kum: Kum kan hman mêk sawina hi mi tam takin ‘*tûn kum*’ an ti a, hei hi ‘*kumin*’ tih hi a dik zâwka ngaih a ni.

Tûn hun: Hei hi Sâp ṭawng ‘*at this time*’ tih ngialngan deuh taka lehlinna a ni âwm e. Mizo ṭawngah erawh chuan ‘*tûn hun*’ ti lovin ‘*tûnah*’ tih hi a tâwk.

RINNA

*Lalrinfeli
Senior Department
Vâivakawn Vêngthlang Kohhran*

Rinna hi Kristiante nunah chuan thil pawimawh tak mai a ni a. Pathianah rinna kan tlâkchham chuan kan chau thuai thîn a; chuvângin, kan intuai thar fo a ngai a ni.

Lirngching leh thlipuite pawh mi tam tak chuan an hlau êm êm a, chhôngkuua mu ho tawpte pawh an awm thîn. Mahse, ringtute tân chuan hlauh tûr eng mah a awm lo a ni tih hriat tlat tûr a ni. Tawngtâina hian thil a ti thei êm êm a, kan tawngtâi tlat chuan lîrnghing lakah pawh hian kan him ngei ang.

Pathian kan rinna kan tih lan theih dân hi chi hrang hrang a awm. February - March thla hian zirlai nâwlpui chuan final term exam kan nei fur a, kan exam chhông hian lehkha kan zir dâwnah te, exam dâwnah leh exam zawhah te Pathian hnênah tawngtâi thîn ila; tichuan, Pathianin mal min sâwm dâwn a ni. Mahse, Pathian kutah i dah tawp a, nangman eng mah i zir si loh chuan eng ang pawhin tawngtâi nasa mah la, i ti tha dâwn chuang lo. Lehkha tha taka i zira, i tawngtâi bawh chuan Pathian malsâwm tlâk i ni ang a; tichuan,

ṭha takin i exam ang a, ṭha takin i pass dâwn a ni. Jakoba 2:17-ah chuan, “Chutiang bawkin rinna chu thiltih nei lovin amah chauhvîn a awm chuan thi a ni,” tiin a inziak a ni. “Ka ring, ka ring,” ti mah ila, chêtzia leh thil tih hmanga kan lantîr si loh chuan eng nge awmzia awm ang?

Kristian tam tak kan buaina chu hei hi a ni. Pathian ring Kristian inti si, Pathiannah pawh inkhâwm leh ngai si lo te, zân inkhâwm ngai lo, Pathianni zân takngial pawh inkhâwm peih lo te kan awm chho ṭan ta; chu chu Pathian ring kan tih chu a ni em ni? A hminga baptisma chan ringawt hian awmzia a nei lo va, baptisma kan chan hnua kan awm dân tûr chu duh duh dân ni chuang lovin, Pathian rawngbâwl te, Pathian tâna nun leh a thu puang darhtu nih te hi a ni.

Pathian ringtu, Kristian naupang ṭha tak ni tûr chuan, meizial zûk rûk te, sahdah hmuam leh tuibûr hmuam te hi tihchhin miah loh tûr a ni. Vawi khat kan tih hian vawi tam tak a hring a; i tih tirhin, ‘tûn chiah ka ti ang a, ka ti tawh lo vang, ka tichhin ringawt dâwn alâwm’ ti mah la, a hnu zêlah i insûm thei lo vang a, i ti zêl mai ang. Chu chu Pathian ringtu, Kristian naupang fel tak takte tih tûr a ni lo a ni. Sakhaw dang vuantu Hindu te, Muslim te leh a dang dang te pawh hian Kristiante nun dân hi an chîk khawp mai a. Kristianten kan thusawi dân te leh ringtu nun kan sawi dân te nêh hian

kan nun dân hi a inang em tih an lo thlîr reng a ni. Chuvângin, Isua (Pathian) ringtu, Kristian naupangte hi chuan kan nun kan vawngin, kan nun kan tithianghlim tûr a ni. Chuti lo chu sakhaw dangte hian min nuihzatin, eng atân mah min ti lo thei a ni.

Amaherawhchu, kan nun kan vawn that tlat chuan Hindu te leh Muslim te takngial pawh an lo inhmuchhuak ang a. Kristianah inletin, Pathian ram an luh theih phah dâwn a; tin, thu chauh hril lovin kan rinna tilangin, kan chêtziaah pho lang tel ila. Kristian nun tilangin, amah zahpui lo tu nih i tum theuh ang u. Tûnlai mi lâr tam tak chu Kristian ni si, lâr tâk avânga Kristianna tilang ngam lote an awm. He thilah hian Pathian a lâwm lo hle ang.

Chuvângin, kan rinna hi thu chauh ni lovin, thil tihah i lantîr thîn ang u. “Rinna chu thiltih nei lovin amah chauhvin a awm chuan thi a ni,” Bible-in a ti si a. Hei hi kristian naupangten vawng tlatin, ring lote hmaah pawh Isua (Pathian) kan rinna hi i tilang thîn ang u. Tichuan, Pathianin amah zahpui lotu leh amah ring tlattu chu vânramah kan thih hunah min hruai dâwn a ni.

HLAWHTLINNA

*Mercy Lalnunluangi
Sacrament Department
Salem Veng Kohhran, Aizawl*

Mi tin hian hlawhtlin hi kan duh vek a, hlawhtlin duh lo chu kan awm âwm lo ve. Hlawhtling tûr chuan eng nge pawimawh kan tih chuan ‘thawhrimna leh taihmâkna’ te a ni a; hêng tel lo chuan hlawhtlin a harsa ðhîn a ni.

Tûnlaia mi lâr te leh scientist lâr tak tak te hi eng nge an lâr chhan kan tih chuan hlawhtlin tumin tumruh leh taima takin an bei a, a tâwpah chuan an tumruhna leh thawhrimna avângin a rah sengin, mi hlawhtlingah an lo chhuak ta ðhîn a ni.

Scientist lâr tak Thomas Alva Edison-a hi kan lo hre tawhin a rinawm. A mizia pakhat chu thil dîlchhût deuh mi hi a ni. A dîlchhût ðhin êm avângin an zirtîrtu chuan mi â, mi harsa niin a hria a; tin, a thiam theih loh lutuk leh a hnufual avângin an hauh pah fo ðhîn. A nu chuan kum 7 mi a nihin in lama a zirlai zir chhonzawm tûrin an school aţangin a la chhuak a. In lamah inzir chhonzawmin, thil ţangkai tak tak - electric bulb, motion picture camera leh thil dang tam tak a siam chhuak ta a ni.

Thil hmuchhuaktu ropui leh siam chhuaktu a

nih theih chhan bulpui ber chu theih tâwp chhuah leh beidawng duh lova a beih nasat ðhin êm avâng a ni. Keini pawh kan zirlaia hlawhtlinna chauh ni lovin kan nuna kan hlawhtlina, mahni kea ding thei tûrin thawhrimna leh taimâkna te hi a pawimawh êm êm a ni tih kan hriat a ðûl âwm e.

Hlawhtlin tum râna kan thawhrim viau chuan kan la

hlawhtling ve dâwn a. Kan hlawhtlinna dâl thei tute chu hêng: ‘Tih tûr khêk, idea ðha tak nei c h u n g a bawhzui peih



loh te leh thatchhiatna leh beidawna te' hi an ni fo ðhin. Hêng thil min ti hnufualtu, kan nih tûr ang min nihtûr thei lotute hi taimâkna leh thawhrimna hmanga hneh a ngai ðhin a. Kan theihna bâkah Pathian ring chung a beih ngai pawh a awm ðhin.

Khawvêl thilah chauh ni lo, nakin huna kan thih hnu pawha hlawhtlin kan duh chuan kawng engkimah Pathian rawn chungin, ring tlat chungin theih tâwp chhuah ðhin ila; tichuan, kan hlawhtling mai dâwn a lo ni. Hlawhtlin ngei tumin i bei fan ang u.



LUNGDAI KOHHRAN TLEIRÂWL LEH NAUPANG CHAWHNU INKHÂWM

Lungdai Kohhran hi kum 1908-ah a lo ding a, kum 2008 khân kum 100-na (Centenary) pawh ropui taka lawm a ni. Tûnah hian dân zawh kim 1048 an awm mêk a, sunday school zirlai zât 1012 niin, zirtirtu 147 an awm mêk bawk. Hun hmasa lamah khân kohhranin Sunday School Hall a neih loh avângin sawrkâr sikulah an inkhâwm thîn a ni.

Lungdai Kohhran aţang hian MSSU chawimawina mi eng emaw zâtin an dawng tawh a. Kohhran committee hnuaiah sunday school committee ţha tak neih a ni a, committee hian puitling leh naupang lam sunday school ţhatna tûr an ngaihtuah thîn. Zirtirtuten Pathian thu hriatna atâna pawimawh hrang hrang hmangin ţhahnemngai takin sunday school an kaihruai thîn.

Sunday school hian MSSU leh kohhran committee aţanga tih tûr lo kalte a theih ang angin an tihlawhtling thîn a, naupang chawhnu inkhâwm leh tleirâwl chawhnu inkhâwm hi uluk taka neih thîn a ni. Naupang chawhnu inkhâwmah hian Pre-Beginner Department, Beginner Department, Primary Department leh Junior Department an tel a, tleirâwl chawhnu inkhâwmah hian Intermediate Department, Sacrament Department leh Senior

Department-te an tel bawk a ni. Naupang Sunday School hotute leh department hrang hrang zirtirtute chuan inkhâwm programme lo duang tûr leh thil tûl dangte lo buaipui tûrin mi eng emaw zât inruat chhuakin, taksa leh thlarau lamah naupangten hma an sâwn theih nân special items hrang hrang - solo, recitation, quiz, games, leh group zai te an tih thin bâkah, zirtirtute leh mi thiam bîkte sâwmin thu tha tak tak ngaihthlâk thin a ni. Tin, an hla zirte biak inah an rem thin bawk.

Kohhran Committee-te ruahmannain kum 2026 aţangin Vacation Bible School (VBS) kalpui leh a ni a. Group-ah inthenin, thu tha tak takte zirin intihlimna hun hman thin a ni. Tin, winter camp leh summer camp-te lîngin neihpui an ni a, naupangten an hlâwkpuuin nuam an ti thin hle. Sunday school committee-te ruahmannain kum tin Sacrament zirlaite Synod hmunpui tlawhpui thin an ni bawk.

Inkhâwm an taima êm êm a, sunday school bâkah kohhran inkhâwmahte an inkhâwm tha thin hle a; tin, biak ina lîm te hi nuam an ti êm êm bawk. Zirtirtute pawhin theih tâwp chhuahin naupangte an enkawl thin a; naupangte leh tleirâwlten inkhâwm nuam an tiha, an hlâwkpui leh zual theih nân zirtirtuten an rilru sêngin, ţan an la sauh sauh zêl a ni.



Hriat Zauna Huang

Zion Harvey

Zion Harvey-a hian kum hnih lek a nih laia a dam loh vak avângin a kut leh ke a chôn a. Nimahsela, tleirâwl a lo nih chuan kut pahnih a ruala vuah sak (transplant) hmasa ber a lo ni ta a ni. Thil ei te, ziah te, rimawi tum te leh kut hmanna thil zawng zawng te chu zir that leh vek a ngai ta a ni.

Mipa naupang kum riat mi hian ball tê tak tê a keng a, a kut zungpui leh a kut zungtang dang hmang chuan a hmet vêl a; tichuan, field-a a



inkhelha, ball a vawm theih hun a nghâkhlel kher mai. Chu chu thil pângngai tak, danglamna êm êm awm lo ni hian a lang a. Amaherawhchu, a danglamna êm êm chu hemi hma lawk kârah kha chuan he mipa naupang hian kut a la nei lo tlat a ni.

Zion Harvey-a chuan kum hnih chauh a nih laiin sepsis natna a vei a, thih mai hlauhthâwnawm khawpin a dam lova. A kut pahnih leh a ke pahnih tan a ngaih phah ta a. Chu mai ni lovin, chu natna chuan a kal a lo khawih chhe hman a; a nuin kal a pe a, a kal pawh chu an thlâk ta a ni.

Chutiang chuan kum hnih chauh a nih laiin kut leh ke tan ngai leh kal thlâk ngai hial khawpin dam lo mah se, Zion-a chu naupang hrisêl tak a ni zui ve ta a. Mipa naupang hlim thei tak a ni. Ke lem an vuah sak a; tichuan, kut leh ke nei lova nun pawh chu a thiam ta viau a. Kut leh ke neilo a nichung chuan thil lei te, thil ziah te leh video games khelh te thlengin a tithei vek a. A kum rualpui naupang dangten an tih theih thilte chu a ti thei ve deuh vek a ni.

Kut thar neih beiseina:

Kum 2021-ah chuan Zion-a pawh kum ruk lai a lo ni ve ta a. Baltimore khawpuia chêng an ni a. A nu Pattie-i chuan Philadelphia khawpuia Philadelphia Shriners Hospitals for Children-a naupang daktawr thiam bîk, Dr Scott Kozin-a leh Dr Dan Zlotolow-a hmu tûrin a hruai a. Daktawr-te râwn an tum chhan hi Zion-a kut lem vuahsak chungchângah a ni. Amaherawhchu, an beisei loh tak maiin daktawr-te chuan ngaih dân dang an lo nei a; Zion-a chu kut lem ni lo, kut tak tak vuahsak an lo rawt a. Zion-a nu chu lâwm bawk si, huphurh bawk siin a awm a. A fapa chuan kut nei leh thei se tih chu a duhthusâm a ni chungin, kut thar nei tûr chuan pal tlang ngai tam tak a awm si a.

Hetianga kut thar vuah hi vascularized composite allotransplantation (VCA) an ti a, khawvêl pumah pawh daktawr tlêm tê chauhvin an la ti a.

Hemi hma lamah hi chuan chûng zînga tu mahin naupang kut an la vuahsak lo a ni. Chutianga kutthlâk tûr chuan inzaina lama mi thiam bîk thahnem tak an tan ho a ngai a, khâwl changkâng tak tak an mamawh t̄euh bawk.

Dr Kozin-a leh Dr Zlotolow-a te chuan Zion-a te chhûng chu an thawhna damdawi ina kut thlâk lam thiam bîkte hnênah an kaltîr ta a. Dr L. Scott Levin-a, kut thlâk lama mi thiam bîk chuan a lo en zui ta a ni.

Endikna hun:

Zion-a taksa chu kawng hrang hranga thla 18 chhûng zet endik a ni a. Tichuan, daktawr-te chuan Zion-a chu naupang kut pahnih a ruala vuahsak hmasak ber ni tûr chuan a tling viauin an hre ta a ni.

Dr Levin-a chuan Zion-a kut vuahsaktu tûr leh a hnua enkawl zuitu tûr mi thiam bîk chi hrang hrang awmna team a siam ta a. Chu team chu vawi tam tak an kal khâwm a, Zion-a zai dân tûr leh enkawl dân tûr chu an tichhin thîn a ni. Zion-a kut milpui âwm an hriat theih nân a kut tiat âwm vêl 3D-in an siam chawp a, an tih dân tûr chu an zir tlut tlut thîn. An inpeih thlap nia an inhriat hnu chuan Zion-a chu kut thlâkna programme-ah chuan an ziak lût ta a.

Zion-a kut milpui zawn hmuh chu thil hautak tak a ni a. Mîpa naupang, a vun rawng milpui, a blood group milpui, a tiatpui, a chhûngten a kut

mi dangte tâna an hlan phal bawk kha a thih a ngai a. Chutiang chu an lo hriat fuh a ngai leh zêl a ni. Dr Levin-a chuan United States ram pum puiah chutiang kut petu (donor) ni thei chu kum khatah mi 15 aia tam an awm theih a ring lo hial a ni. Chuvângin, Zion-a tâna kut petu tûr zawn chhûng chuan kum eng emaw zât a aw h an ring a. Mahse, thla thum hnu lekah chuan Pattie-i chuan kut petu tûr an hmuh thu hriattîrna a dawng ta nghâl mai a ni.



Inzai pui hriat reng tûr

Kut petu tûr a awm tâkah chuan Dr Levin-a hovin June 2015-ah Zion-a kut chu a thar vuahsak tûrin an zai ta a. Dârkâr 10 leh a chanve chhûng zet an zai a. Zion-a zainaah hian mi 40 lai an tel a, chûng zînga mi 10 chu daktawr, mi zai thiam bîk an

ni. Dârkâr 10 chuang zet an zai hnuah chuan hlawhtling takin kut thar chu an vuahsak ta a ni.

Zion-a chuan kut thar a neih hnu chuan a kut thar chu ṭha taka a chêt vêl theih nân zirtîr a ngai a. Tichuan, mi thiam bîkten an ṭanpui a, amah a tum a lo ruh ve bawk a. Zawi zawiin a kut chu a lo che thei ta a; thil chhar te, thil ken te pawh a lo ti thei ve ta zêl a. A kut thar chu thla tam tak chhûng a bîk takin an zirtîr a ni.

A kut an thlâk tirh kha chuan kut zungṭang ti che tûr ringawt pawhin a theih tâwp chhuaha a ṭan a ngai a. Damdawi in aṭanga a chhuah hnuah pawh kum khat chhûng chu Kennedy Krieger Institute-ah ni tin dârkâr riat vêl a kut thar hman a zir ṭhîn. A kut an thlâksak aṭanga kum khat a ral chuan a kut thar hmangin baseball a vawm thei tawh a, lehkha a ziak thei a, a chaw chhûn amahin a insiam thei a, a kawr zipper te pawh amahin a zip thei tawh a ni. Hêng thilte hi taksa pângngai neite tân chuan thil ropui tak angin lang lo mah se, Zion-a hian kut thar a neih hma chuan a ti thei ngai lo a ni.

Zion-a hian kut thar a neih leh a hman chhoh theihna kawngah hian theih tâwp a chhuah ve a. Mi thiamten ṭanpui mah se, amahin a tum ve loh chuan kut thlâk hi a hlawhtling thei dâwn miah lo va. A tawrhchhelna te, a huaisenna te leh a taihmâkna te avângin kut thar pahnih a neih pah ta a ni.



Naupang leh tleirâwlte zîngah Pathian biak inkhâwma zai ða peuh lo ka hmu hnem hle mai. Zai uar hi a ða a. Hla thiam tam hi thlarau nun châwmtu hnâr pawimawh tak a ni.

Pathian biak inkhâwma zai uar hian ðan lenna kawngah nghawng thui tak a nei ðîn. A hnuaiâ târ lante hi a pawimawh chhan tlângpuite an ni:

1. Thlarau nun lungphûm nghet: Fakna hlate hi Pathian thu leh thurin tawi fel tak leh fiah taka rem khâwm an ni tlângpui a. Naupangin hla a thiam tam hian, Pathian mizia te, khawngaihna te leh thutak te chu awlsam takin a thinlungah a tuh ðîn a ni.

2. Pathian n ê n a inlaichîna thûk zâwk: Zai hi "vawi hnih ðawngtâina" an lo ti hial ðîn a. Tleirâwlten an hla thiamte an



sak hian, Pathian nêna inbiakna leh amah chawimawina kawng awlsam leh hlimawm tak an zawh ðîn. Inkhâwma an zai uar hian, Pathian hmaah an inphawrh tihna a ni a, an thlarau nun a tiharhvâng ðîn a ni.

3. Mizia leh nungchang siamtu: Hla hian mihring rilru a hneh thei êm êm a. Fakna hla thiam tam naupang chuan rilru nuam lo leh lungngaihna a tawh pawhin, chûng hlate chu a thinlungah an lo thar leh a, amah tichaktu leh hruaituah an lo ẵng ẵn. Khawvêl thil lakah 'vênhimna lung bang' ang a ni thei.

4. Kohhran inunauna leh inpumkhatna: Inkhâmnaa uar taka zai hian inpumkhatna a siam a. Naupang leh tleirâwlte chu an zai tam hian kohhran member pawimawh an nihna an inhria a, inkhâm nuam an tih phah ẵn.

5. Rilru hrisêlna leh hlimna: Zai hian mihring thluak leh taksaah hlimna a thlen ẵn tih hi Science pawhin a nemnghet. Naupang hlim taka zai ẵnte chu an mizia a hlim sâr h a, mi dang lakah pawh an hawihhâm zâwk tângpui ẵn.

Khawvêl hla hian beng a luah hma êm êm a. Chuvângin, naupang leh tleirâwlte hian hla thiam tam tûr leh inkhâmna zai uar tûrin theih tâwp chhuah tûr a ni.

HRIATTÎRNA

Kristian Naupang-a thu chhuah tûr nei tân kristiannaupang@gmail.com-ah emaw, whatsapp hmangin phone number 8974581885-ah emaw theh luh theih reng a ni.

Editor, Kristian Naupang



Bible aṭangin zawnhna siam a ni a. Eng zāt nge kan chhân dik theih i han en chhin teh ang u aw:

1. Isua khân khawi khuaah nge zeng a tihdam?

Chhânna:

2. Thli leh tuifâwn hau rehtu kha tu nge?

Chhânna:

3. Lazara te kha khawi khuaah nge an awm?

Chhânna:

4. Lazara a thih khân thlânah ni eng zāt nge a awm hman?

Chhânna:

5. Lazara unaute hming kha han sawi teh?

Chhânna:

6. Jaira fanu damlo kha kum eng zāt nge?

Chhânna:

7. Kapernaum khuaa inkhâwmna in hotu kha tu nge?

Chhânna:

8. Juda-te khân Jentail-te kha engtin nge an sawi ṭhin?

Chhânna:

9. Kanaan mi tih hi khawi rama chêng sawina nge?

Chhânna:

10. Timothea te khaw hming kha eng nge?

Chhânna:

Note: June thlaah a chhânna târ lan a ni ang.

April thla Quiz chhânna:

1. Pahnih

2. Lazara

3. Zâwlnei Zakaria

4. Bartimaia

5. Nisan thlaah

6. Olive tlâng

7. Mi pahnih

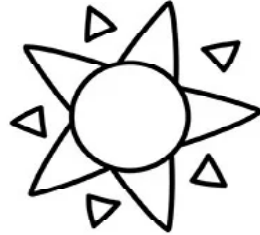
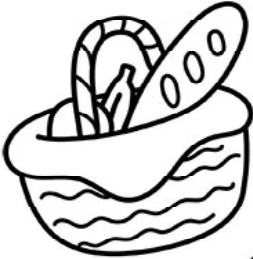
8. Mari Magdalini

9. Luruh hmun

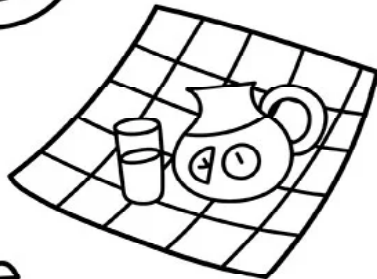
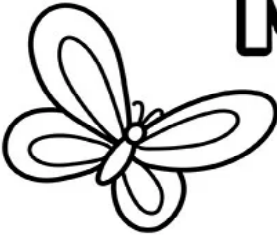
10. Mi pahnih



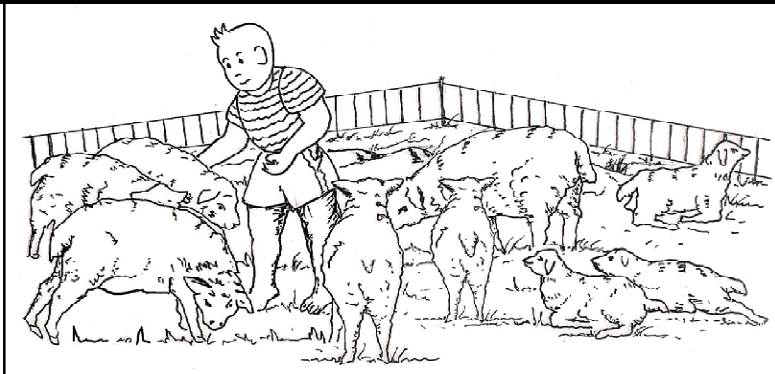
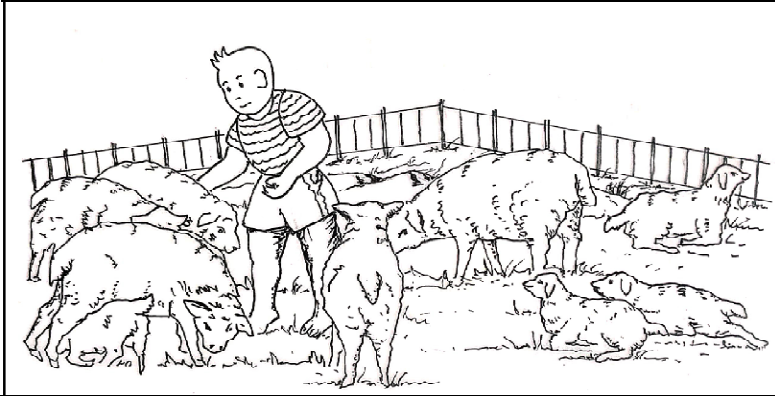
CHEI RAWH LE!



MAY

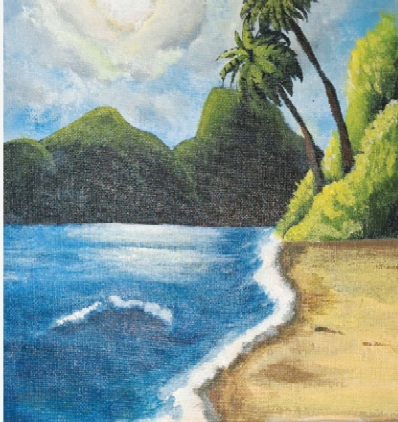


KA HMUH ANG HMU THEI RAWH



A chung a lemziak chi hnih khi ngun takin en la, a inan lohna chi ruk hmu thei rawh.

1.
2.
3.
4.
5.
6.



A ziaktu

**Rodinpuii
Senior Department
Venghnuai Kohhran**

To



LUNGDÂI KOHHRAN NAUPANG & TLEIRÂWL CHAWHNU INKHÂWM

Published by Rev. P.B. Zosaphara
Synod Literature & Publication Board, Aizâwl and
Printed at the Synod Press, Mission Vêng, Aizâwl - 796001. Copies - 35,000